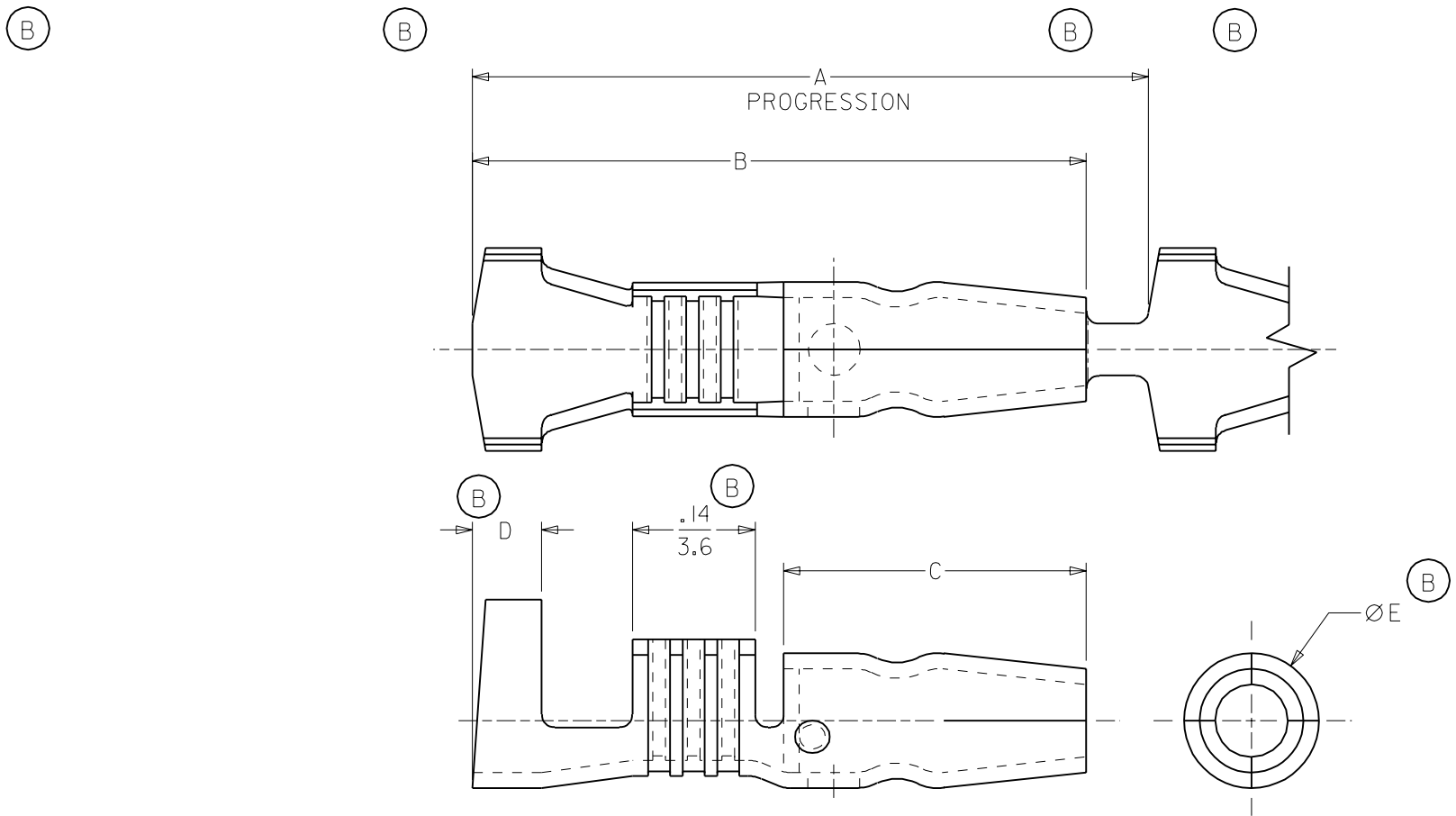


MATERIAL NUMBER	ENG. NUMBER	DESCRIPTION	FITS RECEPT. DIAMETER.	A	B	C	D	E
197244102	19724-4102	PLATED	.156/(3.96)	.76/(19.3)	.71/(18.0)	.35/(8.9)	.08/(2.0)	.156/(3.96)
197244402	19724-4402	PLATED	.180/(4.57)	.83/(21.2)	.74/(18.8)	.44/(11.2)	.06/(1.5)	.180/(4.57)
197244100	19724-4100	UNPLATED	.156/(3.96)	.76/(19.3)	.71/(18.0)	.35/(8.9)	.08/(2.0)	.156/(3.96)
197244400	19724-4400	UNPLATED	.180/(4.57)	.83/(21.2)	.74/(18.8)	.44/(11.2)	.06/(1.5)	.180/(4.57)



SALES DRAWING

NOTE(S):
 1. MATERIAL: BRASS
 2. MATERIAL THICKNESS: .016/(0.41)
 3. PLATING: ELECTRO-TIN

ADDED UNPLT NO'S	EC NO. ETC2003-0162	DRWN: DLM 02/12/20	CHK: SB 02/12/20	APPR: RWD 02/12/20
REV	B	DESCRIPTION	QUALITY SYMBOLS	MAJOR = Ø
			CRITICAL = ∇	

GENERAL TOLERANCES: (UNLESS SPECIFIED)	SCALE 5:1	DESIGN UNITS <input type="checkbox"/> mm <input checked="" type="checkbox"/> INCH	THIRD ANGLE PROJECTION
4 PLACES ±0.----- ±.-----	DRAWN BY & DATE DLM 02/12/20	TITLE: VIBRAKRIMP SNAP PLUG 18-14 AWG, OPEN BARREL CHAIN STAMPED	
3 PLACES ±0.--- ±.005	CHECKED BY & DATE SB 02/12/20	MOLEX INCORPORATED	
2 PLACES ±0.13 ±.010	APPROVED BY & DATE RWD 02/12/20	CAD FILENAME SD19724002.DGN	MATERIAL NO. (SEE CHART)
1 PLACE ±0.25 ±.---	ANGULAR: ±1/2°	DRAWING NO. SD-19724-002	SHEET NO. 1 OF 1
DRAFT WHERE APPLICABLE MUST REMAIN WITHIN DIMENSIONS		THIS DRAWING CONTAINS INFORMATION THAT IS PROPRIETARY TO MOLEX INCORPORATED AND SHOULD NOT BE USED WITHOUT WRITTEN PERMISSION.	

DIMENSIONS:	SHT	REV
<input type="checkbox"/> mm <input checked="" type="checkbox"/> INCH		
<input type="checkbox"/> mm ONLY		