

NOTES:

1. MATERIALS AND FINISHES(MICRO-INCHES)

- BODY = BRASS PER QQ-B-626, ALLOY 360, 1/2 H;
JIS H3250 C 3604BD OR EQUIVALENT
NICKEL PL. 60 MIN. THICK OVER COPPER STRIKE
- RING = BRASS PER QQ-B-626, ALLOY 360, 1/2 H;
JIS H3250 C 3604BD OR EQUIVALENT
NICKEL PL. 60 MIN. THICK OVER COPPER STRIKE
- CONTACT = BRASS PER QQ-B-626, ALLOY 360, 1/2 H;
JIS H3250 C 3604BD OR EQUIVALENT
GOLD PL. 30 MIN. THICK OVER NICKEL PL. 100 MIN. THICK
OVER COPPER STRIKE
- FERRULE = COPPER PER ASTM B-75 ALLOY C12200 OR EQUIVALENT,
NICKEL PL. 60 MIN. THICK OVER COPPER STRIKE
- BARREL = BRASS PER QQ-B-626, ALLOY 360, 1/2 H;
JIS H3250 C 3604BD OR EQUIVALENT
NICKEL PL. 60 MIN. THICK OVER COPPER STRIKE
- INSULATOR = TEFLON MIL-P-19468 OR EQUIVALENT; NATURAL
- LOCK COVER = PBT(WITH 15% GLASS FIBER) PER CHANG CHUN GRADE
4115202 OR EQUIVALENT, COLOR: SEE TABLE BELOW

2. ELECTRICAL:

- A. IMPEDANCE: 50 OHM, NOMINAL
- B. FREQUENCY RANGE: DC-6GHz (OPTIMIZED FOR DC -4GHz)
- C. VSWR(RETURN LOSS): 1.4 (-15.6 dB), MAX.(DC-2GHz)
(MATED PAIR) 1.5 (-13.9 dB), MAX.(2-3GHz)
- D. DIELECTRIC WITHSTANDING VOLTAGE: 800VRMS, MIN.

3. MECHANICAL:

- A. DURABILITY: 100 CYCLES MIN.
- B. TEMPERATURE RANGE: -40 °C TO 100 °C

4. PACKAGING:

- A. QUANTITY: TRAY PACK
- B. MARKING: TRAY TO BE MARKED
"AMPHENOL, FA2-NXSP-C00-9, AND DATE CODE"

5. ALL DIMENSIONS MECHANIC & ELECTRICAL DESIGN
COMPLY WITH DIN 72594-1 AND USCAR-18 SPEC.

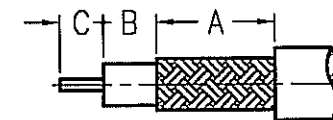
THIRD ANGLE PROJ.



REVISIONS

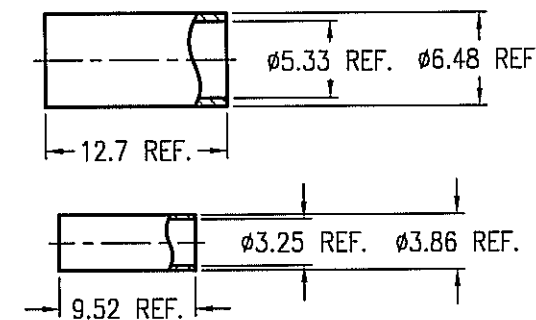
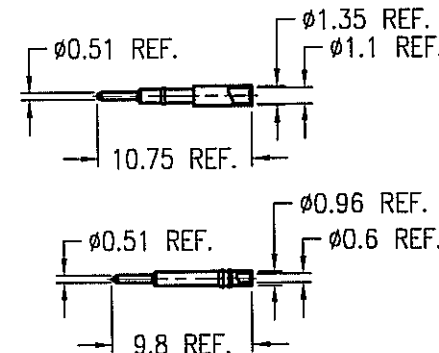
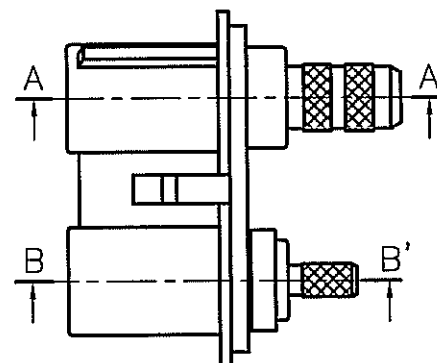
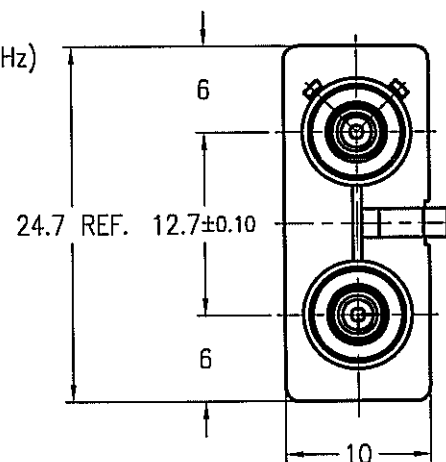
REV	DESCRIPTION	DATE	ECO	APPR
C	NO.3 WAS CHANGED\RD-DM92082B01L	28-Aug-03	-----	ANGELA
D	ADDED L M N KEY CODING \RD-DM93081001L	25-Sep-07	-----	ANGELA
E	ADDED DIM BREF.REMARK 3&4;2.3±0.25 WAS 2.3±0.1; FKBD00101 WAS FKBD00101A ,FKBD00401 WAS FKBD00401A\RD-DM07101601E	23-Nov-07	-----	ANGELA
F	ADDED COD DRAWING\RD-DM0B101301J5	10-Oct-08	-----	SCOTT
G	MODIFIED THE TABLE\RD-DM0B102001J5	20-Oct-08	47184	SCOTT

CABLE	NO.	A	B	C
RG-58A/U, 58C/U		8.3	1.7	3
RG-174/U, 188A/U 316/U		5.2	2.8	2

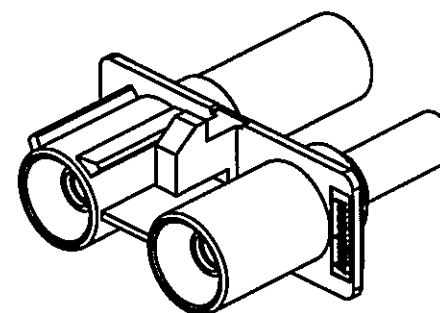


RECOMMENDED
CABLE STRIPPING DIM'S
(建議剝線尺寸)

- * RG-174/U, 188A/U, 316/U
- 1. CRIMPED FERRULE
HEX CRIMP SIZE .128"
- 2. CRIMPED CONTACT PIN AFMB
ADJUST TO 4
POSITIONER K727
- * RG-58A/U, 58C/U
- 1. CRIMPED FERRULE
HEX CRIMP SIZE .213"
- 2. CRIMPED CONTACT PIN
SQ. CRIMP SIZE .042"



KEY CODING	PART NO.	DRAWING NO.	COLOR
A	FA2-NASP-C00-9	FKT1121AW-009-NT30G-50	JET BLACK
B	FA2-NBSP-C00-9	FKT1121BW-009-NT30G-50	CREAM
C	FA2-NCSP-C00-9	FKT1121CW-009-NT30G-50	SIGNAL BLUE
D	FA2-NDSP-C00-9	FKT1121DW-009-NT30G-50	CLARET VIOLET
E	FA2-NESP-C00-9	FKT1121EW-009-NT30G-50	LEAF GREEN
F	FA2-NFSP-C00-9	FKT1121FW-009-NT30G-50	NUT BROWN
G	FA2-NGSP-C00-9	FKT1121GW-009-NT30G-50	BLUE GREY
H	FA2-NHSP-C00-9	FKT1121HW-009-NT30G-50	HEATHER VIOLET
I	FA2-NISP-C00-9	FKT1121IW-009-NT30G-50	BEIGE
K	FA2-NKSP-C00-9	FKT1121KW-009-NT30G-50	CURRY
L	FA2-NLSP-C00-9	FKT1121LW-009-NT30G-50	PASTEL ORANGE
M	FA2-NMSP-C00-9	FKT1121MW-009-NT30G-50	PASTEL GREEN
N	FA2-NNSP-C00-9	FKT1121NW-009-NT30G-50	WATER BLUE
Z	FA2-NZSP-C00-9	FKT1121ZW-009-NT30G-50	CARMINE RED



CONFIGURATION CONTROL:
NO CHANGES PERMITTED TO DRAWING WITHOUT
PPAP QUALIFIED CUSTOMER APPROVAL

CUSTOMER OUTLINE DRAWING

ALL OTHER SHEETS ARE FOR INTERNAL USE ONLY

UNLESS OTHERWISE SPECIFIED, DIMENSIONS ARE IN METRIC AND TOLERANCES ARE:
0.5 - 6mm ±0.1mm 6 - 30mm ±0.2mm 30 - 120mm ± 0.3mm ANGLES ±1°

NOTICE - These drawings, specifications, or other data (1) are, and remain the property of Amphenol Corp. (2) must be returned upon request; and (3) are confidential and not to be disclosed to any person other than those to whom they are given by Amphenol Corp. The furnishing of these drawings, specifications, or other data by Amphenol Corp., or to any other person to anyone for any purpose is not to be regarded by implication or otherwise in any manner licensing, granting rights or permitting such holder or any other person to manufacture, use or sell any product, process or design, patented or otherwise, that may in any way be related to or disclosed by said drawings, specifications, or other data.

MATERIAL	-	DRAWN	EMILY	DATE	23-Nov-07	TITLE	FAKRA TWIN SMB CRIMP PLUG	Amphenol RF Danbury CT USA, Tainan Taiwan, Shenzhen China www.amphenolrf.com	
REFERENCE		ENGINEER	JERRY	DATE	23-Nov-07	SCALE:1.5/1	SHEET 2 OF 2	DRAWING NO. FKT1121XX-009-NT30G-50	
FINISH		APPROVED	ANGELA	DATE	23-Nov-07	DWG SIZE	B	CODE ID	74868
		CAD FILE	F:\DWG\FKT\1121XX\009\50\NT30G-GSZ			REV	G	ITEM NO.	FK2121AAXA1NC5F
								PART NO.	FA2-NXSP-C00-9