

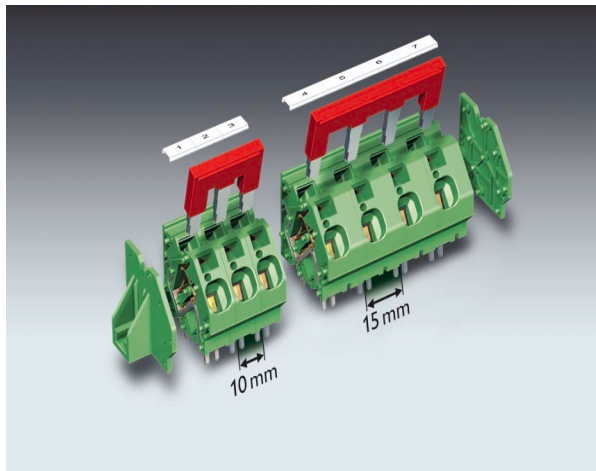
PCB spring-cage terminal blocks ZFKDS 10-10,00 and ZFKDS 10-15,00 10 and 15 mm pitch

The spring-cage PCB terminal block range now features a new highlight which considerably reduces the wiring required for power electronics. With the ZFKDS 10, conductor sizes of up to 16 mm² can be connected and currents of up to 57 amps can be reliably transferred to the PCB.

The PCB terminal block already has unlimited UL rating in a 15 mm pitch of up to 600 volts.

Insulated bridges are available with a varying number of positions for looping through potentials and integrated test connections permit convenient use of test plugs. The PCB terminal block can also be screwed down with the aid of the lateral mounting flanges.

Professional marking of the clamping point is possible with Zack marker strip, SK self-adhesive strips and direct printing.



COMBICON Select

The COMBICON search engine with CAD downloading

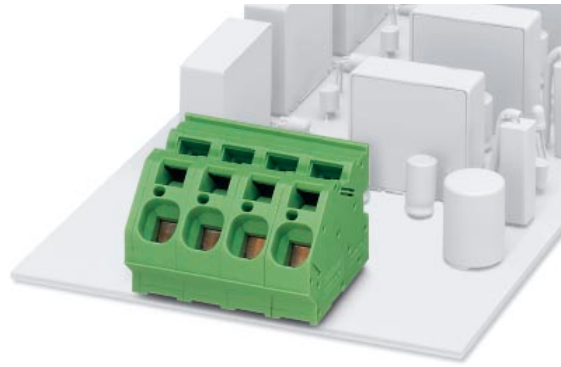




COMBICON Select – the printed circuit board connection software supports your workflow from the PCB and housing layout to the ordering process with:

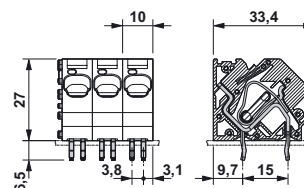
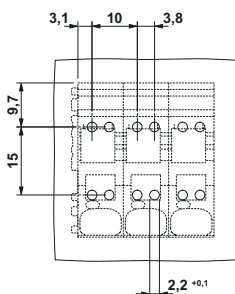
- Systematic and fast selection of products
- Universal Internet aided engineering with extensive CAD downloading
- Easy-to-use e-shopping functions.

select.phoenixcontact.com/combicon

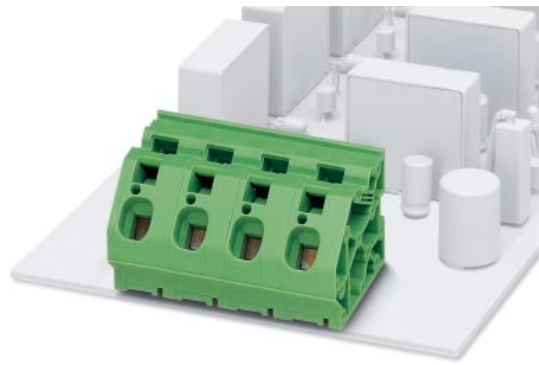
PCB spring-cage terminal block
ZFKDS 10-10,00
10 mm Pitch



Description	Type	Order No.	Pcs./Pkt.
PCB spring-cage terminal block, color: green	ZFKDS 10-10,00	19 86 62 8	50
End terminal block, 11.7 mm wide, necessary at the end of a row of terminal blocks	ZFKDSA 10-11,7	19 87 05 4	50
Pair of flanges, can be snapped on a row of single terminal blocks	FL-ZFKDS 10	19 87 07 0	50
(1) Fixed bridge, fully insulated, pitch of 10 mm	2-pos. 3-pos. 4-pos.	FBSK 2-10/ZFKDS 10 FBSK 3-10/ZFKDS 10 FBSK 4-10/ZFKDS 10	50
(2) Screwdriver, to release the bridge		SZF 1-0,6 x 3,5	10
(3) Screwdriver, to release the spring-cage and the bridge with a 15 mm pitch		SZF 3-1,0 x 5,5	10
(4) Marker card, with 12 pcs., 10-section marker strips, white self-adhesive, for 120 terminal blocks		SK 10/5 (see COMBICON catalog)	
Technical data	see description		
Dimensions			
Pitch	[mm]	10	
Hole diameter	[mm]	2.2	
Pin dimensions	[mm]x[mm]	1.2 x 1.4	
Technical data in accordance with IEC/ DIN VDE			
Insulating material group	-	I	
Surge voltage category / contamination class	-/-	III / 3	II / 2
Rated voltage	[V]	320	800
Rated surge voltage	[kV]	4	4
Nominal current / cross section	[A]/[mm ²]	57 / 10	
Maximum load current / cross section	[A]/[mm ²]	57 / 16	
Connection capacity			
Solid / stranded / conductor sizes	[mm ²]/[mm ²]/AWG	0.2 - 16 / 0.2 - 16 / 24 - 6	
Stranded with ferrule without / with plastic sleeve	[mm ²]	0.25 - 10 / 0.25 - 10	
Multiple connection (2 conductors with same cross section)			
Solid / stranded	[mm ²]	—	
Stranded with ferrule without plastic sleeve	[mm ²]	—	
Stranded with TWIN ferrule with plastic sleeve	[mm ²]	—	
Stripping length	[mm]	12	
Internal cylindrical gauge (IEC 60 947-1)	-	A6/B6	
Thread	-	—	
Torque	[Nm]	—	
Insulating material		PA	
Inflammability class in acc. with UL 94		V0	
Approval data (UL/CUL and CSA)			
Nominal voltage / current / conductor sizes	UL/CUL: [V]/[A]/AWG CSA: [V]/[A]/AWG	—	

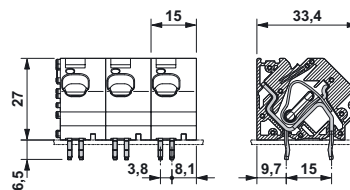
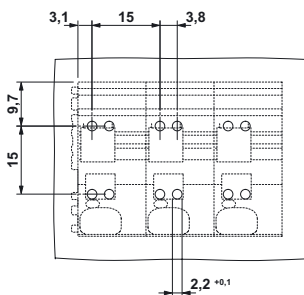


PCB spring-cage terminal block
ZFKDS 10-15,00
15 mm Pitch



Description	Type	Order No.	Pcs./Pkt.
PCB spring-cage terminal block , color: green	ZFKDS 10-15,00	19 86 63 1	50
End terminal block , 16.7 mm wide, necessary at the end of a row of terminal blocks	ZFKDSA 10-16,7	19 87 06 7	50
Pair of flanges , can be snapped on a row of single terminal blocks	FL-ZFKDS 10	19 87 07 0	50
(1) Fixed bridge , fully insulated, pitch of 10 mm	2-pos. 3-pos. 4-pos.	FBSK 2-15/ZFKDS 10 FBSK 3-15/ZFKDS 10 FBSK 4-15/ZFKDS 10	50
(2) Screwdriver , to release the spring-cage and the bridge with a 15 mm pitch	SZF 3-1,0 x 5,5	12 06 61 2	10
(3) Marker card , with 12 pcs., 10-section marker strips, white self-adhesive, for 120 terminal blocks	SK 15/5 unbedruckt	08 11 19 2	10
(4) Marker card , white, 10-section, divisible	ZBF 15: unbedruckt	08 11 20 2	10

Technical data	see description		
Dimensions	15		
Pitch	[mm]		
Hole diameter	2.2		
Pin dimensions	[mm]x[mm]		
	1.2 x 1.4		
Technical data in accordance with IEC/ DIN VDE			
Insulating material group	-		
Surge voltage category / contamination class	-/-		
Rated voltage	III / 3	III / 2	II / 2
	1000 ¹⁾	1000	1000
Rated surge voltage	8	8	8
Nominal current / cross section	[A]/[mm ²]		
	57 / 10		
Maximum load current / cross section	[A]/[mm ²]		
	57 / 16		
Connection capacity			
Solid / stranded / conductor sizes	[mm ²]/[mm ²]/AWG		
	0.2 - 16 / 0.2 - 16 / 24 - 6		
Stranded with ferrule without / with plastic sleeve	[mm ²]		
	0.25 - 10 / 0.25 - 10		
Multiple connection (2 conductors with same cross section)			
Solid / stranded	[mm ²]		
	-		
Stranded with ferrule without plastic sleeve	[mm ²]		
	-		
Stranded with TWIN ferrule with plastic sleeve	[mm ²]		
	-		
Stripping length	[mm]		
	12		
Internal cylindrical gauge (IEC 60 947-1)	-		
	A6/B6		
Thread	-		
	-		
Torque	[Nm]		
	-		
Insulating material			
Inflammability class in acc. with UL 94	PA		
	V0		
Approval data (UL/CUL and CSA)			
Nominal voltage / current / conductor sizes	UL/CUL: [V]/[A]/AWG		
	CSA: [V]/[A]/AWG		



¹⁾ When the insertion bridge is used, the voltage is reduced to 800 V.

Additional technical data

Voltage drop over two terminal points (DIN EN 60 947-7-1/2)
Rise in temperature (DIN EN 60 947-7-1/2)

Immunity to vibration (DIN EN 60 068-2-6:1996-05)

- Frequency
- Amplitude
- Acceleration
- Duration per axis

Resistance to industrial atmospheres (DIN 50 018:1997-06)

- Level
- No. of cycles

Assessment of fire risk

- (DIN EN 60 695-2-11/VDE 0471 Part 2-11:2001-11)
- Test temperature
 - Duration

≤ 3.2 mV
 ≤ 45 K

10-150 Hz
0.35 mm (10-60 Hz)
50 m/s²
2.5 h

KFW 1.0 S
2

960°C
30 s