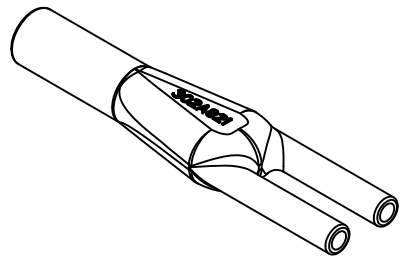
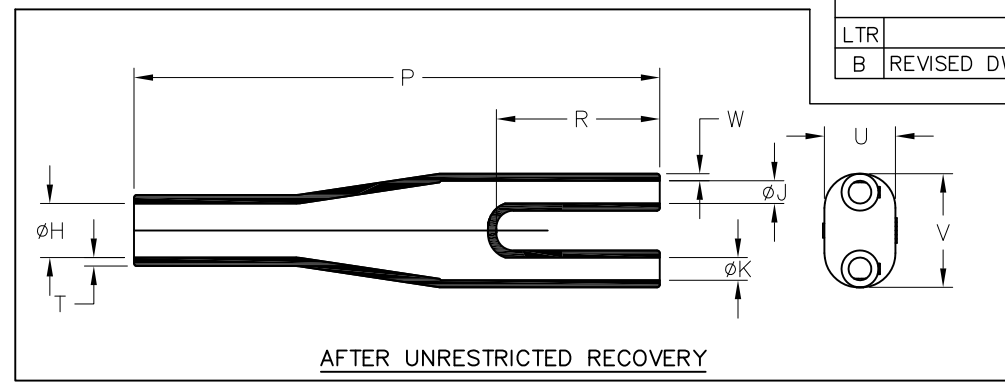
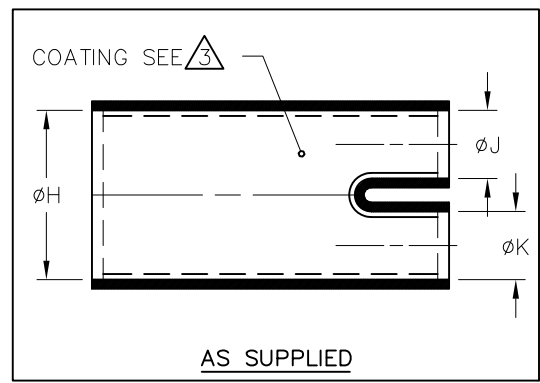


REVISIONS		
LTR	DESCRIPTION	DATE
B	REVISED DWG PER ECO-11-002021	01/28/2011

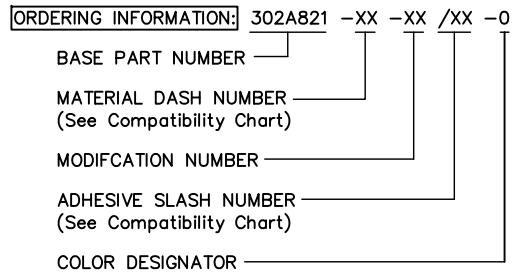


NOTES:

- ALL DIMENSIONS ARE IN: $\frac{\text{INCHES}}{\text{MILLIMETERS}}$
- DIMENSION APPEARING IN TABLE ARE AS FOLLOWS:
a - AS SUPPLIED
b - AFTER UNRESTRICTED RECOVERY

3 COATING (ADHESIVE) IS OPTIONAL. AS SUPPLIED DIMENSIONS APPEARING IN TABLE ARE FOR UNCOATED PARTS. WHEN COATING IS ADDED, ENTRY DIAMETER WILL BE REDUCED BY .06 MAX.

PART DESCRIPTION	H		J & K		P	R	T	W	U	V
	MIN a	MAX b	MIN a	MAX b	$\pm 10\%$ b	$\pm 10\%$ b	$\pm 20\%$ b	$\pm 20\%$ b	REF b	REF b
302A821	1.30 [33,0]	.37 [9,4]	.69 [17,5]	.16 [4,1]	3.70 [94,0]	1.18 [29,9]	.06 [1,6]	.05 [1,3]	.50 [12,7]	.80 [20,3]



If this document is printed it becomes uncontrolled. Check for the latest revision

MATERIAL DASH No.	MATERIAL DESCRIPTION	RT SPEC	ADHESIVE COATING SLASH No.	ADHESIVE COATING "S" No.
-3	POLYOLEFIN, SEMI-RIGID	RT-301	/42, /86	S-1017, S-1048
-4	POLYOLEFIN, FLEXIBLE	RT-1304	/42, /86	S-1017, S-1048
-25	ELASTOMER, FLUID RESISTANT	RW-2070	/225	S-1206

UNLESS OTHERWISE SPECIFIED DIMENSIONS ARE INCHES. METRIC DIMENSIONS ARE IN BRACKETS.

DECIMAL TOLERANCES
.XXX \pm 0.005 [0.13 mm]
.XX \pm 0.01 [0.25 mm]
.X \pm 0.1 [0.50 mm]

ANGLE TOLERANCE
.X \pm 1 DEG.

TYCO ELECTRONICS RESERVES THE RIGHT TO AMEND THIS DRAWING AT ANY TIME. USERS SHOULD EVALUATE THE SUITABILITY OF THE PRODUCT FOR THEIR APPLICATION.

DRAWN: G.Rositano 09/13/2010
APPROVED: D.Hurrell 09/13/2010

RPN

THIRD ANGLE PROJECTION

CUSTOMER DRAWING

Tyco Electronics Raychem Molded Parts
305 Constitution Dr
Menlo Park, CA 94025

TITLE: TRANSITION, 3 ENTRY

SIZE: B CODE IDENT. NO.: 06090 DWG. NO.: 302A821

DO NOT SCALE THIS DRAWING SHEET 1 OF 1