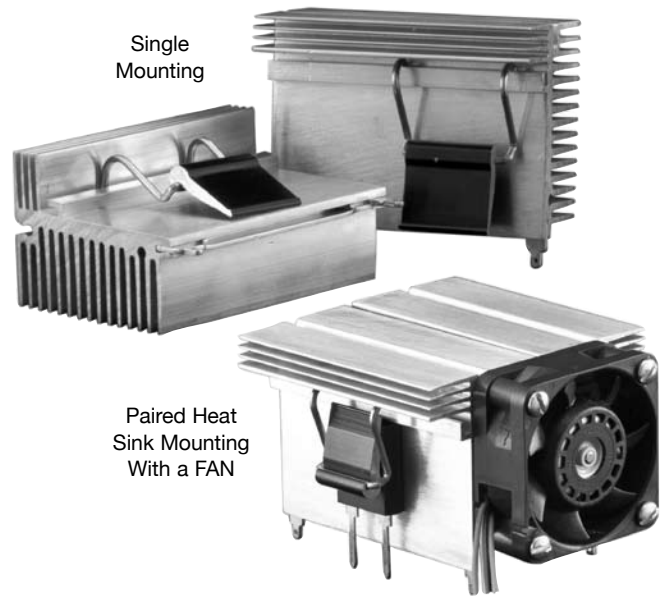


# C40 Heat Sink System

For T0-247, T0-264 and SOT-227 Packages

The C40 Series Heat Sink System (Patent Pending) offers flexible, high performance and compact heat sinks with an exchangeable cam clip system for T0-247, T0-264 and SOT-227 (clip in development) devices. This powerful heat sink can be thru-hole soldered in single or paired configurations. The paired unit has mounting holes to accommodate a 40mm x 40mm fan. It is the ideal type of heat sink for high power density and small size (1U or 2U) electronic packaging with forced convection.



## SERIES SPECIFICATIONS

| Heatsink Part Number | Surface Area (in <sup>2</sup> / mm <sup>2</sup> ) | Weight (oz / g) | Length L (mm) |  |
|----------------------|---|-----------------|---------------|--|
| C40-058-VE           | 63.8 / 41,180                                     | 2.5/ 71         | 58            | <i>consult factory for alternate lengths and clip combinations</i> |
| C40-058-AE           |   |                 |               |  |

## CHARACTERISTICS

|                                     |  |
|-------------------------------------|--|
| <b>Heat Sink</b>                    | Aluminum Alloy 6063-T5 or Equivalent with either degreased or black anodized finish.   |
| <b>Spring Clip</b>                  | Music Wire, Per ASTM A228 with bright nickel plating   |
| <b>Solder Foot</b>                  | Cold-rolled Steel, Per ASTM A-366 with pure tin over copper strike. RoHS compliant.  |
| <b>Fan</b>                          | 40mm fan with 4 self-tapping M3 screws   |
| <b>Interface Thermal Resistance</b> | For improvement, use thermal joint compound, 0.005 Grafoil (TGon 800 by Laird), or phase change material (Hi-Flow by Bergquist Insulator (Optional) Sil-Pad 900-S, K6 800-S and K10 by Bergquist |

### Heat Dissipation

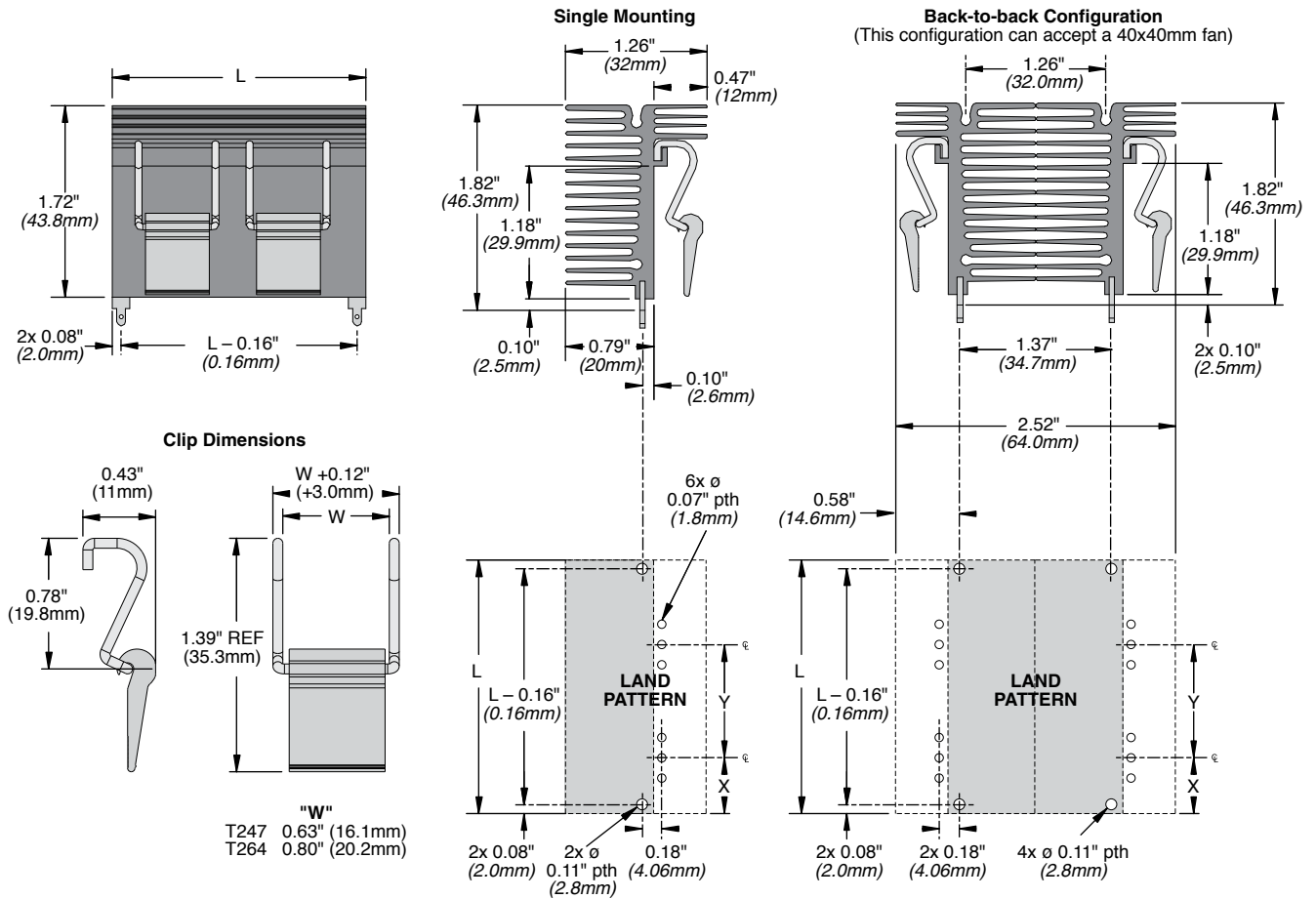


(continued)

# C40 Heat Sink System

For TO-247, TO-264 and SOT-227 Packages

## DIMENSIONS



## HOW TO ORDER

### Heatsink

**C 4 0 - 0 5 8 - A E**

|        |             |                                     |                |
|--------|-------------|-------------------------------------|----------------|
| Series | Length (mm) | Finish                              | RoHS compliant |
| C40    | 058         | A = black anodized<br>V = degreased | RoHS compliant |

### Clip

**C L A - T 2 4 7 - 2 1 E**

|             |  |                        |                |
|-------------|--|------------------------|----------------|
| Clip series | Device type  | Standard configuration | RoHS compliant |
| CLA         | T247 = TO-247<br>T264 = TO-264<br>S227 = SOT-227<br>(in development) | CLA                    | RoHS compliant |