

## Items

10" display x1

FPC cable x1

LattePanda v1.2 x1

U-disk x1

5V@3A adapter x1 (you can find the recommend list at the bottom of this article)



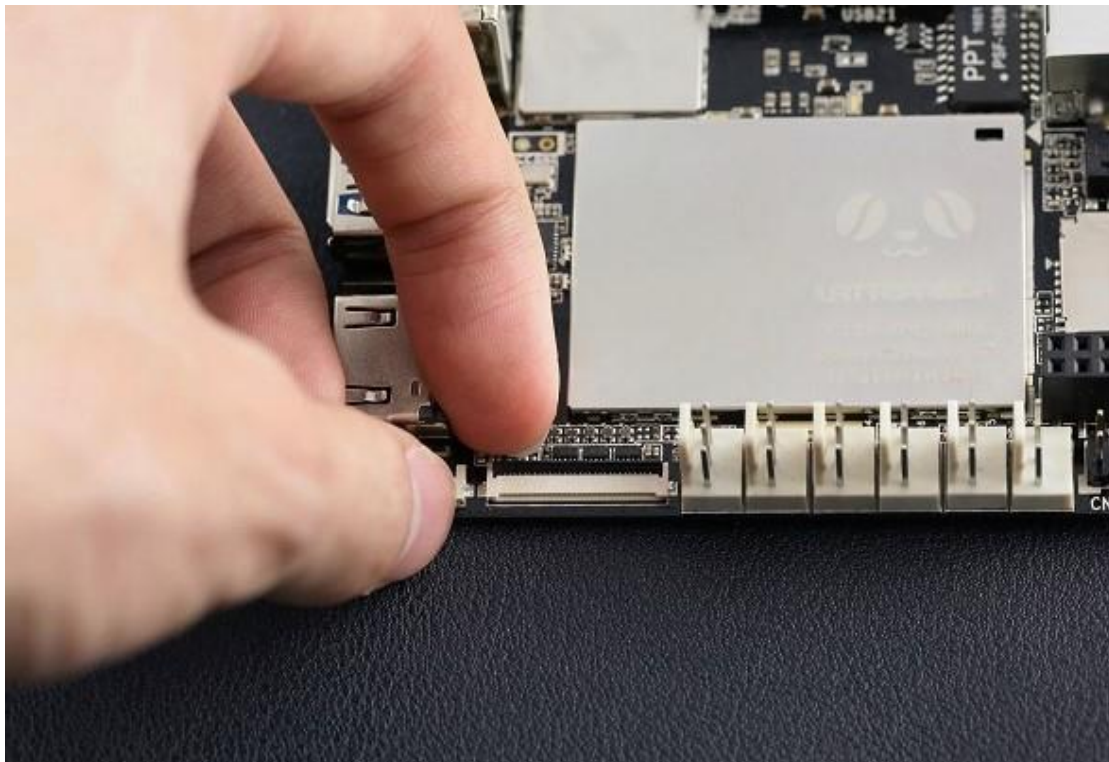
### 1. Plug in the FPC cable





**Note: Please connect it with LattePanda BEFORE power-on. And make sure the Golden Finger face the right side.**

The contacts on FPC are so compact and in order. Please be careful that any dislocation connection may cause the LattePanda short circuit and the IPS display abnormal like ghosting or flicker. Lift up the actuator. Use thumb or index finger might be easier.



Insert display FPC in.

**Place Golden Finger side down!**



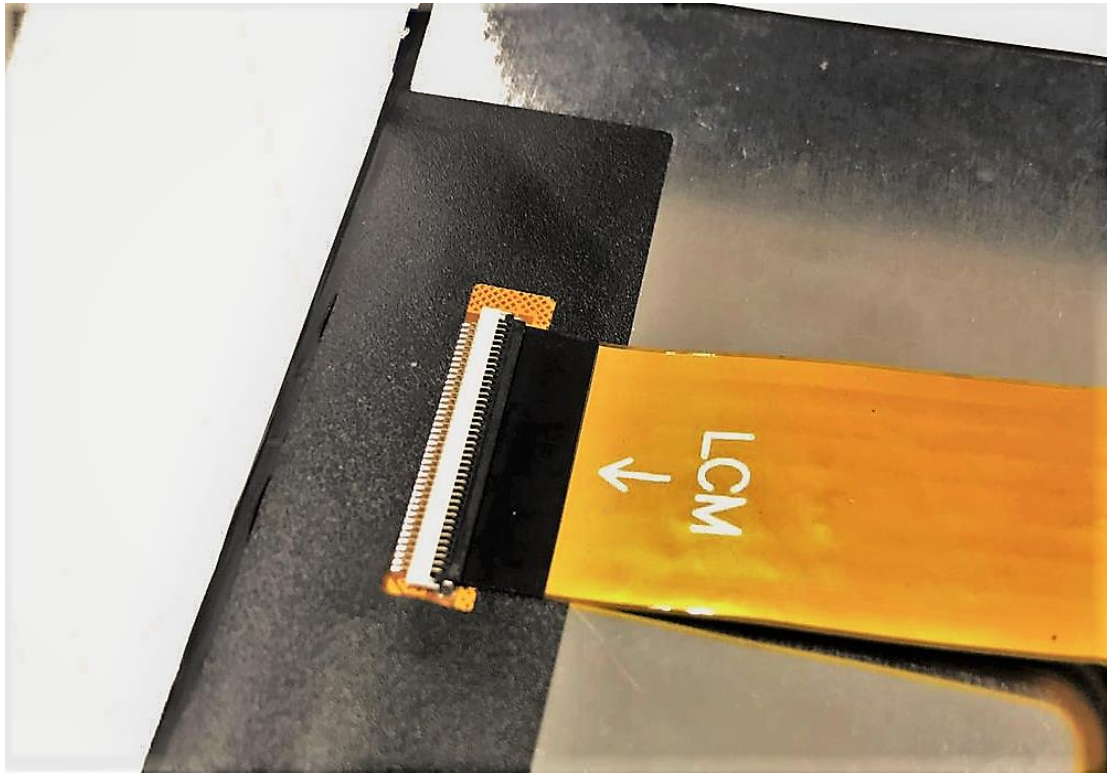
**Note: The FPC must be fully inserted in the connector. If not fully inserted, the actuator will not close properly. Should this be the case, lift up the actuator and repeat the process (starting with Step 1 above)**

Rotate down the actuator until firmly closed.



Insert the FPC of display part. Same as the main board part. Place the Golden Finger side down too.





## 2. Flash bios file on the LattePanda

So far, the 10 inch display can only work with LattePanda v1.2 (S70CR200) version.

### How to Figure out the verison of your lattePanda

You can distinguishing between those by the stick on the side of the board.  
S70CR200 Z8350 -> V1.2



When you boot up the board before flash the bios file, the display will show nothing  
And we suggest you use the HDMI monitor to help you to do this job better.

### How to refresh the LattePanda BIOS:

1. Format your USB disk to FAT32 and change the drive name to "WINPE"
2. Copy the right BIOS files directly to root of the USB flash disk
3. Plug the U-disk in USB host
4. Plug in the MicroUSB cable and power on the system

5. Wait the refreshing the BIOS automatically like 5 minutes (or if you connect with the monitor it will returning "fs1:>" (Check the "

```

startup.nsh> afuefix64 DF-BI-7-S70CR110-C34A-001-C /b /p /n /x
Image type X64 is not supported by this IA32 shell
startup.nsh> fs1:
startup.nsh> afuefi DF-BI-7-S70CR110-C34A-001-C /b /p /n /x
-----+-----
|               AMI Firmware Update Utility  v5.08.00               |
|               Copyright (C)2015 American Megatrends Inc. All Rights Reserved. |
|-----+-----|
Reading flash ..... done
- ME Data Size checking . ok
Secure Flash enabled, recalculate ROM size with signature... Enable.
- FFS checksums ..... ok
Loading capsule to secure memory buffer ... done
Erasing Boot Block ..... done
Updating Boot Block ..... done
Verifying Boot Block ..... done
Erasing Main Block ..... done
Updating Main Block ..... done
Verifying Main Block ..... done
Erasing NVRAM Block ..... done
Updating NVRAM Block ..... done
Verifying NVRAM Block ..... done
startup.nsh> afuefix64 DF-BI-7-S70CR110-C34A-001-C /b /p /n /x
Image type X64 is not supported by this IA32 shell
fs1:\> _

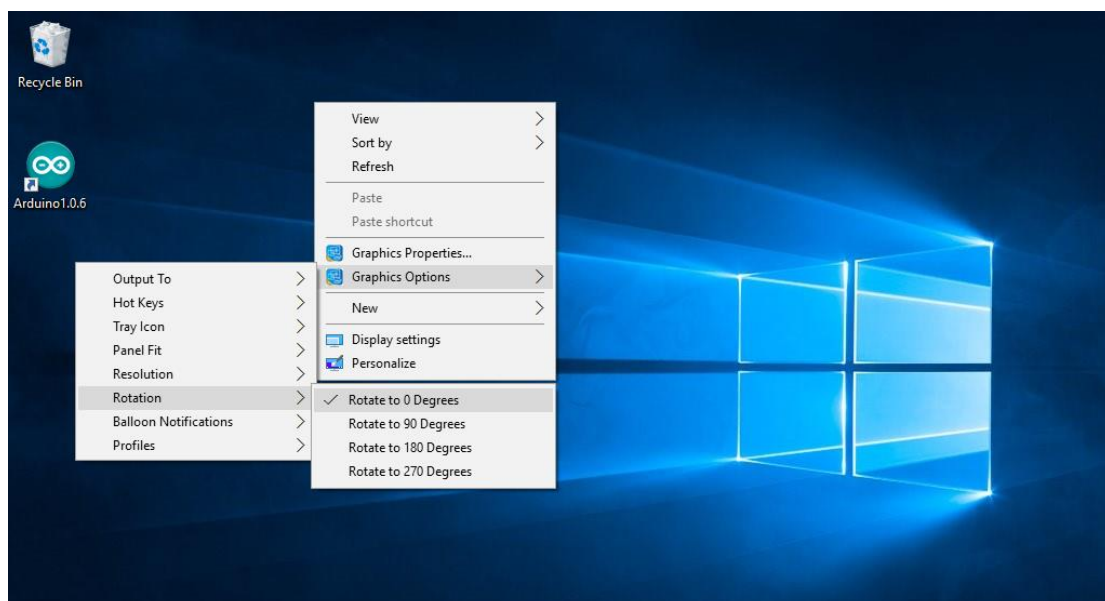
```

"))

6. Unplug the U-disk!
7. Restart the system via pressing the reset button or "Ctrl+Alt+Del". Then finish refreshing. Note: make sure that remove the U-disk before restarting the system!

### 3. How to rotate the display

Going into the system and right click on the desktop. Then you can find the "Graphics Option"->"Rotation" to change the direction of the display.



Recommend List

5V 3A adapter

[https://www.amazon.com/NorthPada-Raspberry-Supply-Charger-Adapter/dp/B01L8DVOFM/ref=sr\\_1\\_3?ie=UTF8&qid=1511766081&sr=8-3&keywords=5v+3A](https://www.amazon.com/NorthPada-Raspberry-Supply-Charger-Adapter/dp/B01L8DVOFM/ref=sr_1_3?ie=UTF8&qid=1511766081&sr=8-3&keywords=5v+3A)

[https://www.amazon.com/LAP-POW-Android-Charger-Adapter/dp/B075WP8W37/ref=sr\\_1\\_2\\_sspa?ie=UTF8&qid=1511766081&sr=8-2-spons&keywords=5v+3A&psc=1](https://www.amazon.com/LAP-POW-Android-Charger-Adapter/dp/B075WP8W37/ref=sr_1_2_sspa?ie=UTF8&qid=1511766081&sr=8-2-spons&keywords=5v+3A&psc=1)

[https://www.amazon.com/Raspberry-Micro-USB-Charger-Raspberry-Pi-Adapter/dp/B00L88M8TE/ref=sr\\_1\\_6?ie=UTF8&qid=1511766081&sr=8-6&keywords=5v+3A](https://www.amazon.com/Raspberry-Micro-USB-Charger-Raspberry-Pi-Adapter/dp/B00L88M8TE/ref=sr_1_6?ie=UTF8&qid=1511766081&sr=8-6&keywords=5v+3A)