

4

3

2

1


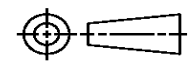
THIS DRAWING IS UNPUBLISHED. RELEASED FOR PUBLICATION  
© COPYRIGHT ALL RIGHTS RESERVED.

LOC		DIST		REVISIONS			
P	LTR	DESCRIPTION		DATE	DWN	APVD	
	A1	ECR-15-008773		10JUN2015	GK	HMR	

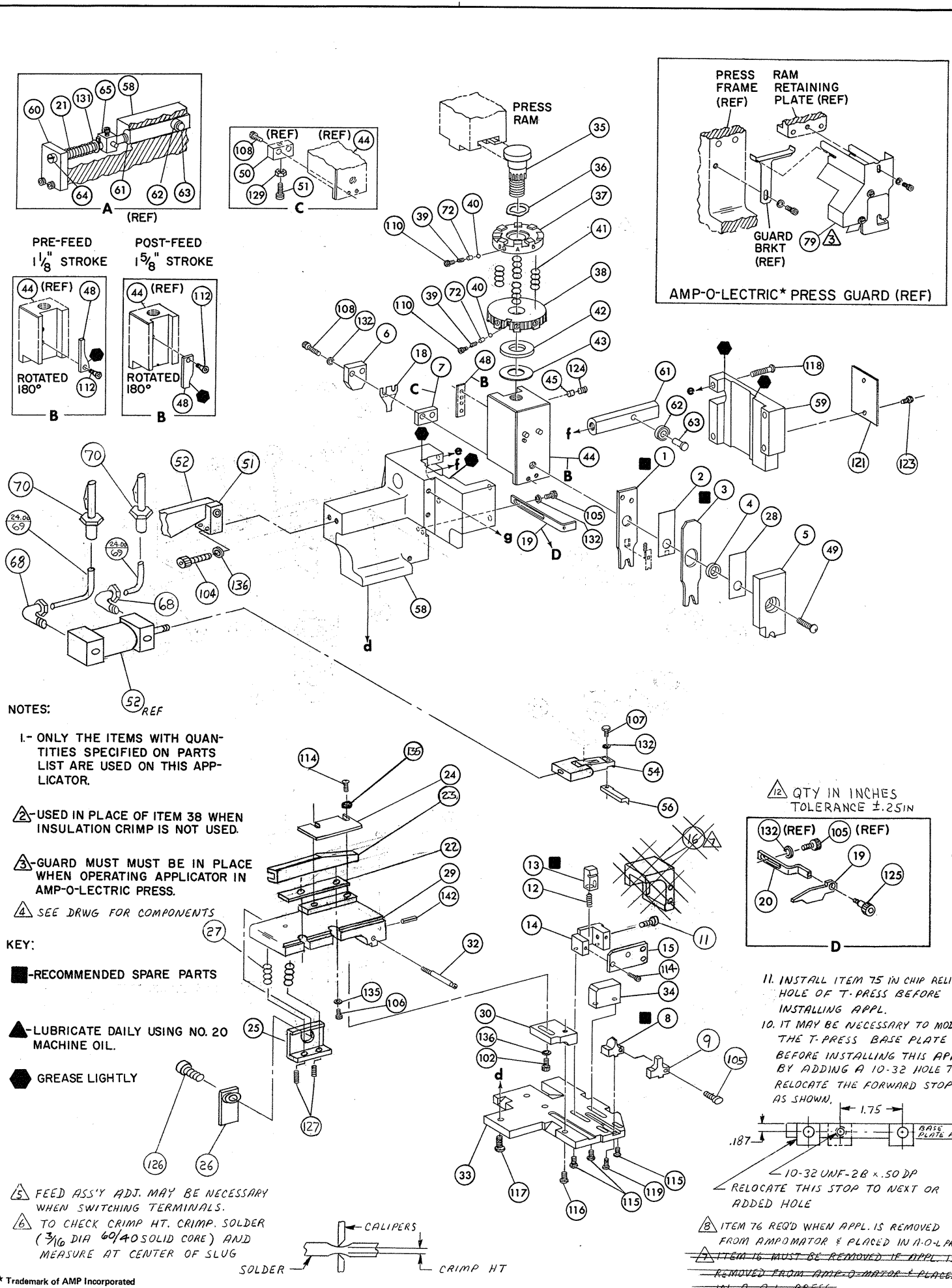
# REPLACED BY OCEAN STYLE APPLICATOR PART NUMBER 2151032-2

FOR REPLACEMENT PARTS FOR APPLICATOR 680042-1  
REFER TO ADDITIONAL PAGE(S). SPARE PARTS KIT (IF LISTED)  
WILL REMAIN AVAILABLE.

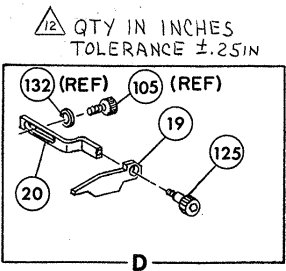
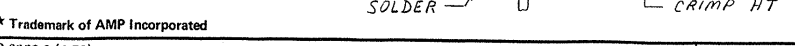
THE REPLACEMENT OCEAN STYLE APPLICATOR HAS THE  
SAME TERMINATOR/PRESS INTERFACE AS APPLICATOR  
680042-1

THIS DRAWING IS A CONTROLLED DOCUMENT.		DWN	GOPALAKRISHNA HV			TE Connectivity			
DIMENSIONS:		CHK	RAGHAVENDRA			NAME			
		TOLERANCES UNLESS OTHERWISE SPECIFIED:		APVD	MINIATURE QUICK CHANGE				
		0 PLC ±	1 PLC ±	RAGHAVENDRA		APPLICATOR SIDE FEED			
MATERIAL		2 PLC ±	3 PLC ±	PRODUCT SPEC	SIZE	CAGE CODE	DRAWING NO	RESTRICTED TO	
FINISH		4 PLC ±	ANGLES ±	APPLICATION SPEC	A3		©- 680042-1		
				WEIGHT			SCALE	SHEET 1 OF 2	REV A1
				CUSTOMER DRAWING					

THIS IS A CONTROLLED DOCUMENT.



- NOTES:**
- I- ONLY THE ITEMS WITH QUANTITIES SPECIFIED ON PARTS LIST ARE USED ON THIS APPLICATOR.
  - 2- USED IN PLACE OF ITEM 38 WHEN INSULATION CRIMP IS NOT USED.
  - 3- GUARD MUST BE IN PLACE WHEN OPERATING APPLICATOR IN AMP-O-LETRIC PRESS.
  - 4- SEE DRWG FOR COMPONENTS
- KEY:**
- - RECOMMENDED SPARE PARTS
  - ▲ - LUBRICATE DAILY USING NO. 20 MACHINE OIL.
  - - GREASE LIGHTLY
  - △ - FEED ASS'Y ADJ. MAY BE NECESSARY WHEN SWITCHING TERMINALS.
  - ⊠ - TO CHECK CRIMP HT. CRIMP. SOLDER (3/16 DIA 60/40 SOLID CORE) AND MEASURE AT CENTER OF SLUG



11. INSTALL ITEM 75 IN CHIP RELIEF HOLE OF T-PRESS BEFORE INSTALLING APPL.

10. IT MAY BE NECESSARY TO MODIFY THE T-PRESS BASE PLATE BEFORE INSTALLING THIS APPL. BY ADDING A 10-32 HOLE TO RELOCATE THE FORWARD STOP AS SHOWN.

10-32 UNF-28 X .50 DP  
RELOCATE THIS STOP TO NEXT OR ADDED HOLE

ITEM 76 REQ'D WHEN APPL. IS REMOVED FROM AMPOMATOR & PLACED IN A-O-L PRESS.

ITEM 16 MUST BE REMOVED IF APPL. IS REMOVED FROM AMP-O-MATOR & PLACED IN A-O-L PRESS.

QTY	PART NO	DESCRIPTION	ITEM NO
—	21045-3	RING, RETAINING 'C' (.187 DIA) FEED FINGER PIN	145
—	—	—	144
—	5-21028-1	PIN, SLOT SPR (.125 DIA X .50) ADJ ROD	143
1	4-21028-0	PIN, SLOT SPR (.093 DIA X .75) STR G PLATE	142
—	1-21030-1	PIN, DOWEL (.187 DIA X .50) LEVER	141
—	1-21030-6	PIN, DOWEL (.187 DIA X 1.25) HOUSING	140
—	21024-5	WASHER, LOCK (NO 10) LUB ASSY	139
7	21024-5	WASHER, LOCK (NO 10) STRIP GUIDE ADJ BLOCK	138
—	21024-5	WASHER, LOCK (NO 10) ADJ PLATE	137
3	21024-5	WASHER, LOCK (NO 10) FEED GUIDE ROD	136
4	21024-2	WASHER, LOCK (NO 4) FRONT STRIP GUIDE	135
7	21024-4	WASHER, LOCK (NO 8) FEED FINGER	134
2	21024-4	WASHER, LOCK (NO 8) DEPRESSOR	133
4	21024-4	WASHER, LOCK (NO 8) STRIPPER DEP & FINGER	132
—	21899-4	WASHER, FLAT (5/16 DIA) SCREW ADJ	131
—	21899-2	WASHER, FLAT (NO 10) LUB ASSY	130
—	21018-5	NUT, HEX MACH (6-32) HOLDDOWN	129
—	21018-5	NUT, HEX MACH (6-32) FEED ADJ	128
2	5-21006-6	SCR, SET (10-32 X .75) DRAG	127
1	22353-8	SCR, SHLD. (.187 DIA X .250 LG) DRAG LEVER	126
1	456567-1	SCR, SHLD. (.188 DIA X .125 LG) STRIPPER	125
1	21009-2	SCR, SKT SET (1/4-20 X .25) (LOC-WEL) RAM	124
2	21017-2	SCR, DRIVE, # 2 X .19	123
—	6-23715-5	SCR, PAN HD MACH (6-32 X 1.50) FEED ADJ	122
1	461264-1	PLATE, IDENTIFICATION	121
2	2-21002-9	SCR, BUT HD SKT CAP (10-32 X .75) DRAG	120
1	2-2733-8	SCR, BUT HD SKT CAP (8-32 X .38) (LOC-WEL) ANVIL	119
4	2-21002-9	SCR, BUT HD SKT CAP (10-32 X .75) CAP	118
3	1-17177-1	SCR, BUT HD SKT CAP (1/4-20 X .62) HOUSING	117
1	2-21002-7	SCR, BUT HD SKT CAP (10-32 X .50) SG ADJ BLOCK	116
2	2-21002-2	SCR, BUT HD SKT CAP (8-32 X .50) SHEAR	115
4	1-21000-3	SCR, SOCKET HD CAP (4-40 X .25) R STRIP GUIDE	114
1	2-21000-7	SCR, SKT HD CAP (8-32 X .50) ANVIL, INSULATION	113
1	2-21003-0	SCR, FLAT HD SKT CAP (6-32 X .50) CAM	112
—	3-21000-4	SCR, SKT HD CAP (10-32 X .38) LUBRICATOR ASSY	111
2	23030-1	SCR, SKT HD CAP (6-32 X .25) (LOC-WEL) CP DISC	110
4	1-21000-3	SCR, SKT HD CAP (10-32 X .62) REAR SHEAR PLATE	109
2	2-21000-9	SCR, SKT HD CAP (8-32 X .75) DEPRESSOR	108
1	2-22603-0	SCR, HEX HD MACH (8-32 X .31) FEED FINGER	107
3	1-21000-4	SCR, SKT HD CAP (4-40 X .38) F STRIP GUIDE	106
2	2-21000-7	SCR, SKT HD CAP (8-32 X .50) STRIPPER & ANVIL	105
2	3-21000-9	SCR, SKT HD CAP (10-32 X .100) AIR FEED ASS'Y	104
—	3-21000-6	SCR, SKT HD CAP (10-32 X .62) FEED ADJ BLOCK	103
1	3-21000-4	SCR, SKT HD CAP (10-32 X .38) SG ADJ BLOCK	102
—	3-21000-4	SCR, SKT HD CAP (10-32 X .38) PIVOT BLOCK	101
REF	462992-7	GUARD	79
—	1-465184-0	LUBRICATOR ASSY	78
—	692655-1	VALVE ASS'Y	77
REF	803931-1	BRACKET, HOLD DOWN	76
1	568681-1	SPACER, BASE PLATE	75
—	458109-1	WASHER, SPECIAL	74
2	690603-1	PLATE, STRIP GUIDE COVER	73
—	690517-1	SPRING, ASSIST	72
2	23238-1	SPACER	71
48"	27319-4	QUICK DISCONNECT TUBING 1/2 O.D.	70
2	22294-6	ELBOW, MALE 1/8 NPT - 1/4 T	69
—	240633-1	BUSHING	68
—	455680-1	LEVER, INTERMEDIATE	67
—	240629-1	BLOCK, PIVOT	66
—	240632-2	SCREW, ADJUSTMENT FEED ROD	65
—	240659-3	PIN, CAM ROLLER	64
—	240658-1	ROLLER, CAM	63
—	454398-2	ROD, FEED	62
—	454178-1	GUIDE, FEED ROD	61

QTY	PART NO	DESCRIPTION	ITEM NO
—	454220-1	CAP, HOUSING	59
—	454485-1	HOUSING	58
—	462427-1	PAWL, FEED	57
—	240624-1	PIN, FEED FINGER	56
—	461062-2	ASS'Y, FEED FINGER	55
—	—	FINGER, FEED	54
—	461065-4	ASS'Y, AIR FEED	53
—	459610-3	MOUNT, FEED BRACKET	52
—	7-21002-9	SPACER, TONKER	51
—	—	BOLT, CRIMPER	50
—	—	CAM FEED STROKE	49
—	459456-1	APPLICATOR, BASIC (SUB ASSY)	48
—	690191-1	PLUG, NYLON	47
—	455673-1	RAM	46
—	690125-1	WASHER, LAMINATED	45
—	690124-3	WASHER, RAM	44
—	1-22280-2	SPRING, INS. DISC	43
—	23241-6	BALL, STEEL	42
—	690170-1	SPRING, COMPRESSION	41
—	690142-1	DISC, INSULATION	40
—	808834-1	DISC, WIRE	39
—	22480-5	WASHER, SPRING	38
—	690212-1	POST, RAM	37
—	—	SUPPORT, TERMINAL	36
—	808835-1	PLATE, BASE	35
—	690432-3	SCREW, ADJUSTMENT	34
—	—	BLOCK, STRIP GUIDE ADJ	33
—	455689-1	PLATE, STRIP GUIDE	32
—	684045-2	SPACER, FRONT SHEAR DEPRESSOR	31
—	22281-9	SPRING, DRAG	30
—	240793-4	LEVER, DRAG RELEASE	29
—	240792-6	DRAG, STOCK	28
—	690438-1	GUIDE STRIP (REAR)	27
—	684042-2	GUIDE STRIP (FRONT)	26
—	817682-1	SPACER, FRONT STRIP GUIDE	25
—	4-22284-9	SPRING, FEED RETURN	24
—	—	ARM, STRIPPER	23
—	690472-2	STRIPPER	22
—	463460-3	HOLDER, TERMINAL	21
—	—	—	20
—	803925-1	GUIDE, CARRIER STRIP	19
—	803926-1	PLATE, SHEAR (REAR)	18
—	467590-1	HOLDER, SHEAR (REAR)	17
—	469542-3	SHEAR, FLOAT (REAR)	16
—	5-22280-0	SPRING, SHEAR	15
—	1-690461-1	STOP, SHEAR	14
—	—	HOLDER, SHEAR (FRONT)	13
—	1-454766-3	ANVIL, INSULATION	12
—	808025-1	ANVIL, WIRE	11
—	240641-9	SPACER, DEPRESSOR (REAR)	10
—	690468-6	DEPRESSOR, SHEAR (REAR)	9
—	—	DEPRESSOR, SHEAR (FRONT)	8
—	238009-1	SPACER, TUBULAR, INS CRIMPER	7
—	2-454765-1	CRIMPER, INSULATION	6
—	—	SPACER, CRIMPER	5
—	808880-1	CRIMPER, WIRE	4

REMARKS

NO \_\_\_\_\_ REV \_\_\_\_\_

TO APPLY TERMINAL

APPL USED ON MACHINE PART NO	MACH SERIAL NO	DISTRIBUTION
CUSTOMER NAME	APPL SERIAL NO	ORIGINAL
ADDRESS	PURCHASE ORDER	CUSTOMER COPY
CITY	ENG APP	FIELD ENG COPY

CRIMPING DATA				APPLICATOR WILL APPLY	
PAD LTR	CRIMP HEIGHT	WIRE SIZE	SOLDER DIA		520402
A	.080	14	.19		520404
B	.075	16	.19		520406
C	NOT USED				520405
D	NOT USED				
CRIMP WIRE	SIZE	TYPE	FEED	APPL INST	
	.205	D	.785	A1 8079	
INSUL					
WIRE RANGE	INSULATION RANGE	PRESS NO			
16-14	.160 MAX				
REMARKS					
KOMAX MODEL 40 AIR-FEED DOUBLE ACTING					
TERM APPL SPEC 114-2123					