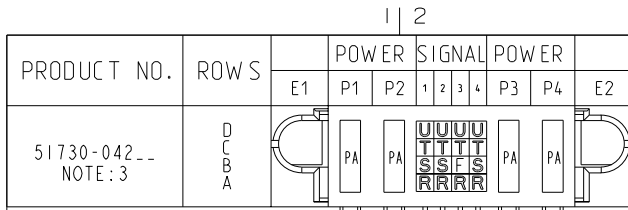
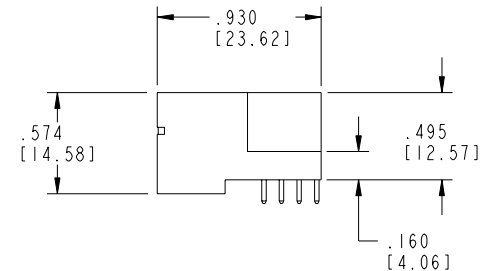
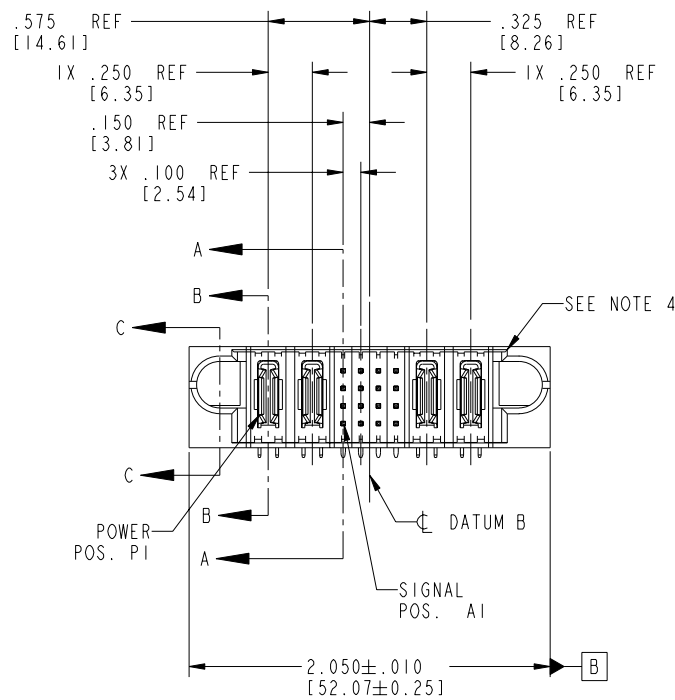


Tous droits strictement réservés. Reproduction ou communication à des tiers interdite sous quelque forme que ce soit sans autorisation écrite du propriétaire. Propriété de c FCI. Droits de reproduction FCI.

All rights strictly reserved. Reproduction or issue to third parties in any form whatever is not permitted without written authority from the proprietor. Property of FCI. Copyright FCI.



51730-042--
NOTE: 3



CODE	DIM "M" MATING LENGTH		CONTACT TYPE
R	.270	[6.86]	SIGNAL
S	.270	[6.86]	SIGNAL
T	.270	[6.86]	SIGNAL
U	.270	[6.86]	SIGNAL
PA	N/A	[N/A]	POWER
F	.220	[5.59]	SIGNAL

mat'l code				SEE NOTE 2		tolerances unless otherwise specified		CUSTOMER	
ltr	ecn no.	dr	date	linear		.XX±.01/0.X±0.3		COPY	
A	V20559	DAI	03/19/02			.XXX±.005/0.XX±0.13		projection	
B	DG05-0560	CS	12/26/05			.XXX±.0020/0.XX±0.051		title	
				angles		0°±2°		2P + 16S + 2P	
				dr	D. INGRAM	03/19/02		R/A SOLDER HEADER	
				enr	J. SWAIN	03/19/02		product family	
				chr	J. SWAIN	03/19/02		PwrBlade	
				appd	J. SWAIN	03/19/02		code	
sheet index	revision sheet	B	B	B	B			213	
		1	2	3	4			sheet 1 of 4	

INCH/MM		scale		A		51730-042		cage code	
1:1								22526	

Pro/E

PDM: Rev:B

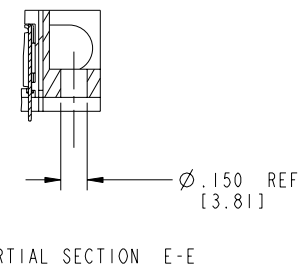
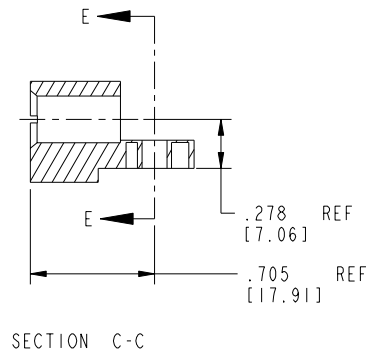
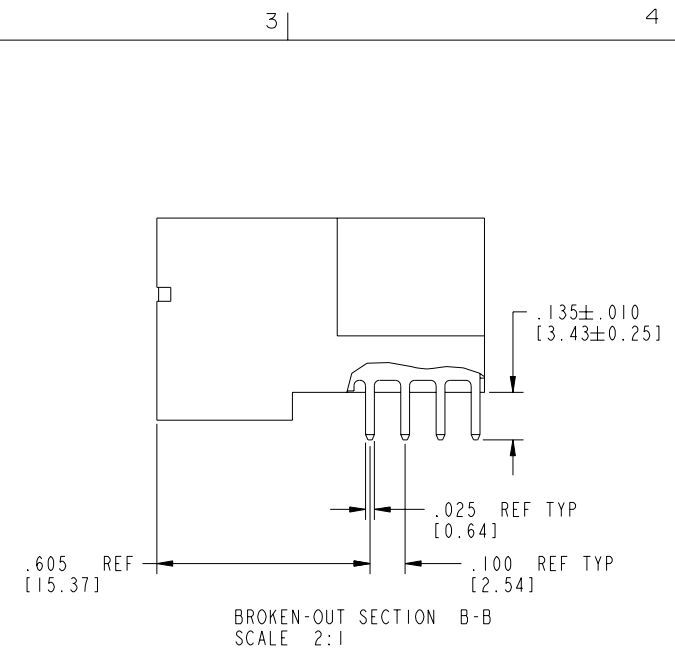
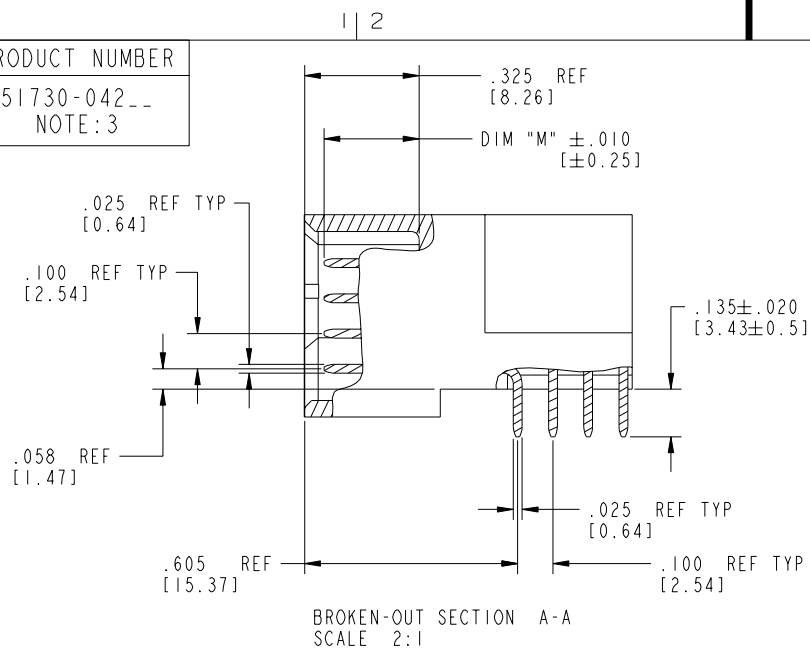
STATUS Released

Printed: Oct 08, 2006

Tous droits strictement réservés. Reproduction ou communication a des tiers interdite sous quelque forme que ce soit sans autorisation écrite du propriétaire. Propriété de c FCI. Droits de reproduction FCI.

All rights strictly reserved. Reproduction or issue to third parties in any form whatever is not permitted without written authority from the proprietor. Property of FCI. Copyright FCI.

PRODUCT NUMBER
51730-042__
NOTE: 3



mat'l code		SEE NOTE 2		tolerances unless otherwise specified		CUSTOMER		 www.fciconnect.com	
ltr	ecn no.	dr	date	linear	.XX±.01/0.X±0.3	COPY		projection	
B				angles	.XXX±.005/0.XX±0.13	2P + 16S + 2P		R/A SOLDER HEADER	
				dr	.XXX±.0020/0.XXX±0.051	INCH/MM		product family PwrBlade	
				enr	0° ± 2°	1:1		code 213	
				chr	D. INGRAM 03/19/02	A		sheet 2 of 4	
				appd	J. SWAIN 03/19/02	51730-042			
sheet index	revision sheet					cage code 22526			

Pro/E

PDM: Rev:B

STATUS Released

Printed: Oct 08, 2006

Tous droits strictement réservés. Reproduction ou communication à des tiers interdite sous quelque forme que ce soit sans autorisation écrite du propriétaire. Propriété de c FCI. Droits de reproduction FCI.

FCI

All rights strictly reserved. Reproduction or issue to third parties in any form whatever is not permitted without written authority from the proprietor. Property of FCI. Copyright FCI.

1 | 2

3 |

4

PRODUCT NUMBER
51730-042__
NOTE: 3

NOTES:

1. DIMENSIONS AND TOLERANCES ARE IN ACCORDANCE WITH ASME Y14.5M, 1994 UNLESS OTHERWISE SPECIFIED.

CONNECTOR NOTES:

2. HOUSING MATERIAL: UL 94 V-0 GLASS FILLED

HIGH-TEMP THERMOPLASTIC
POWER CONTACT MATERIAL: COPPER ALLOY
SIGNAL PIN MATERIAL: COPPER ALLOY

3. PLATING:

51730-042 Singal Pin: 30u"/0.76um Au OVER 50u"/1.27um Ni ON THE CONTACT AREA.
AND 100u"/2.54um SnPb PLATING OVER 50u"/1.27um Ni ON THE TERMINATION SECTION.
Power Pin: 30u"/0.76um Au OVER 50u"/1.27um Ni ON THE CONTACT AREA,
AND 100u"/2.54um SnPb PLATING OVER 50u"/1.27um Ni ON THE TERMINATION SECTION.

51730-042LF Singal Pin: 30u"/0.76um Au OVER 50u"/1.27um Ni ON THE CONTACT AREA.
AND 78u"/2.00um Sn PLATING OVER 50u"/1.27um Ni ON THE TERMINATION SECTION.
Power Pin: 30u"/0.76um Au OVER 50u"/1.27um Ni ON THE CONTACT AREA,
AND 78u"/2.00um Sn PLATING OVER 50u"/1.27um Ni ON THE TERMINATION SECTION.

PART NUMBER 51730-042LF MEETS EUROPEAN UNION DIRECTIVE AND OTHER COUNTRY REGULATIONS AS DESCRIBED IN GS-22-008.

THE HOUSING WILL WITHSTAND EXPOSURE TO 260° PEAK TEMPERATURE FOR 10 SECONDS IN A WAVE SOLDER APPLICATION WITH A CIRCUIT BOARD.

4. MANUFACTURER'S NAME, P/N, AND DATE CODE TO APPEAR ON THIS SURFACE.

5. PRODUCT SPECIFICATION GS-12-149.
APPLICATION SPECIFICATION BUS-20-067.

PCB NOTES:


6. ALL HOLE DIAMETERS ARE FINISHED HOLE SIZE.
7. MOUNTING HOLES, WHERE APPLICABLE, ARE UNPLATED.

8. $\varnothing .0453 \pm 0.0010$ [1.151 \pm 0.025] DRILLED HOLES PLATED WITH

0.0003 [0.008] MIN SnPb OVER .001 [0.03]
TO .003 [0.08] Cu PLATING TO ACHIEVE
 $\varnothing .040 \pm .003$ [1.02 \pm .07] HOLE.

9. "DIM XXX" TO BE DETERMINED BY THE CUSTOMER.

10. CONNECTOR KEEP-OUT ZONE.

mat'l code				SEE NOTE 2		tolerances unless otherwise specified		CUSTOMER		 www.fciconnect.com	
ltr	ecn no.	dr	date	linear	.XX+ .01/0.X+0.3		COPY		projection	title	
B					.XXX+ .005/0.XX+0.13		INCH/MM			2P + 16S + 2P R/A SOLDER HEADER	
				angles	.XXX+ .0020/0.XXX+0.051		scale		product family		
					0° + 2°		1:1		PwrBlade		
				dr	D. INGRAM 03/19/02				code		
				enr	J. SWAIN 03/19/02				213		
				chr	J. SWAIN 03/19/02				sheet		
				appd	J. SWAIN 03/19/02				4 of 4		
sheet index	revision sheet										

1 | 2

3 |

4

Pro/E

cage code 22526

PDM: Rev:B

STATUS Released

Printed: Oct 08, 2006