

TELECOMMUNICATION SMD MODEM TRANSFORMER

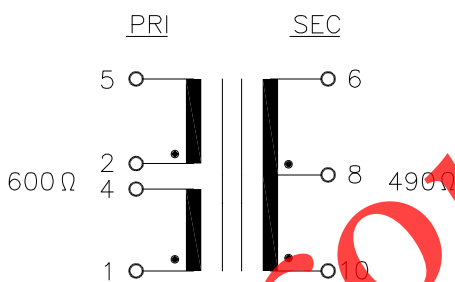
A. Electrical Specifications (@ 25° C)

1. Primary Impedance; 600Ω
2. Secondary Impedance; 490Ω
3. Insertion Loss: 1.50dB MAX @ 1KHz, 0dBm
4. Frequency Response; ±0.30dB @ 300Hz to 3.5KHz, 0dBm
5. Longitudinal Balance; 60dB MIN @ 200Hz to 4KHz, 0dBm
6. Primary Inductance; 1.50H MIN @ 1KHz, 1.0Vrms Measure (1-5) with 2 & 4 shorted
7. DC Resistance; (1-4)=23.8Ω ±15%
(2-5)=23.8Ω ±15%
(10-6)=47.8Ω ±15% with 2 & 4 shorted
8. Turns Ratio; (1-5):(10-6)=1:1.00 ±2% with 2 & 4 shorted
9. Total Harmonic Distortion; -70dB MAX @ 600Hz, -10dBm (-80dB TYP)
10. Dielectric Strength; 1875Vrms 1 second @ Pri-Sec

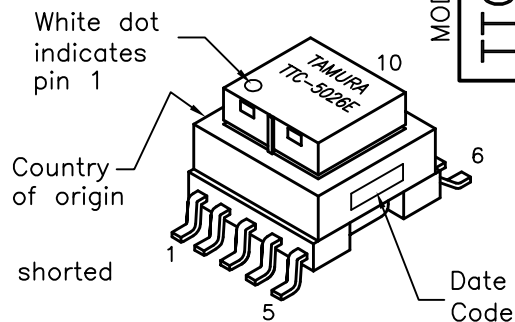
B. Marking; TTC-5026E, TAMURA, date code and country of origin "E" designates UL approved family classification

C. Safety; UL1950 3rd Edition, UL60950

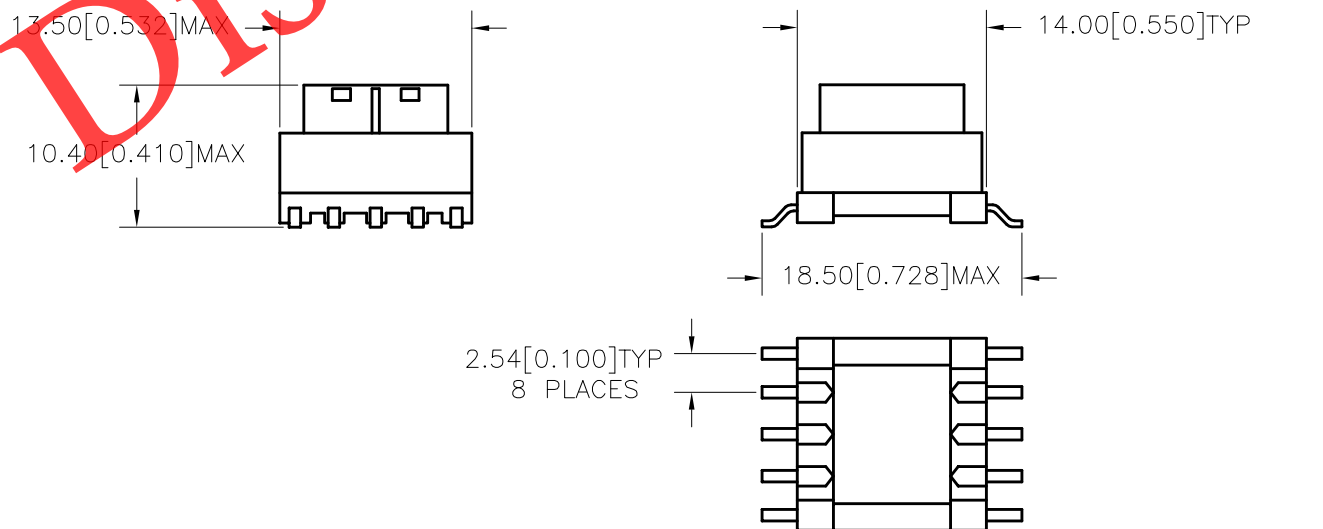
D. Schematic;



MODEL NUMBER
TTC-5026



E. Mechanical Specifications;



PREPARED BY:

K. BRENNAN

ENGINEER:

M. PITCHAI

DWG CONTROL NO. P-A1-13143
ACAD\TTC\A1131431.DWG

REV -

TELECOMMUNICATION
MODEM TRANSFORMER

TTC-5026

QUALITY CONTROL:

T. CLEM

CONTENTS OF THIS DRAWING ARE SUBJECT TO CHANGE WITHOUT PRIOR NOTICE

TAMURA CORPORATION OF AMERICA
43352 BUSINESS PARK DRIVE, TEMECULA, CA. 92590-6624
(909) 699-1270 FAX 9096769482

MODEL SPECIFICATION

DIM: mm(ln) SCL: 2/1 SH: 1 OF 1

APPROVED:

Y. SEKIGUCHI

PROPRIETARY NOTICE: THIS DRAWING PRINT OR DOCUMENT AND SUBJECT MATTER DISCLOSED HEREIN ARE PROPRIETARY ITEMS TO WHICH TAMURA RETAINS THE EXCLUSIVE RIGHT OF DISSEMINATION, REPRODUCTION, MANUFACTURE AND SALE. THIS DRAWING, PRINT OR DOCUMENT IS SUBMITTED IN CONFIDENCE FOR CONSIDERATION BY THE RECIPIENT ALONE UNLESS PERMISSION FOR FURTHER DISCLOSURE IS EXPRESSLY GRANTED IN WRITING.