

REVISIONS

0	RELEASED DGW 4-06-95
1	.272 REF. WAS .292 ±.020, DGW 8-03-95 G.G. AUG 3 1995
2	.272±.020 WAS .272 REF. IN SIDE VIEW, DGW 5-07-97 G.G. MAY 12 1997

PDF File Made

CUSTOMER APPROVAL:
ALL FEATURES AND DIMENSIONS SHOWN ON THIS DRAWING ARE ACCEPTABLE. PARTS PRODUCED IN ACCORDANCE WITH THIS DRAWING, WILL PHYSICALLY MEET OUR REQUIREMENTS.

Customer _____
Approved by _____
Date _____

CW INDUSTRIES
Southampton, Pa. 18966

TOLERANCES UNLESS OTHERWISE SPECIFIED

2 Place decimal ±.010	METRIC
3 Place decimal ±.005	1 Place dec. ±.25mm
Angles ± 1°	2 Place dec. ±.13mm

Id. No.: SAFO209A
Made for: CW IND.
Drawn by: DGW 4-06-95
Checked by: G.GULD 4-6-95
Approval: _____

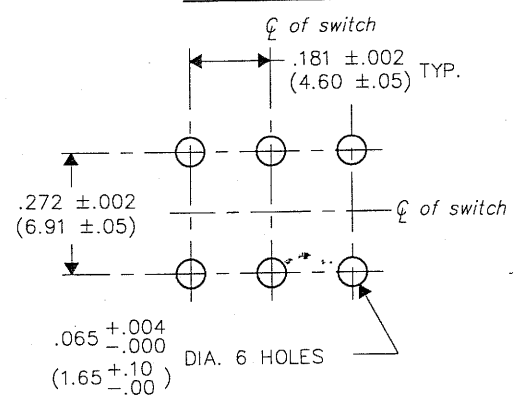
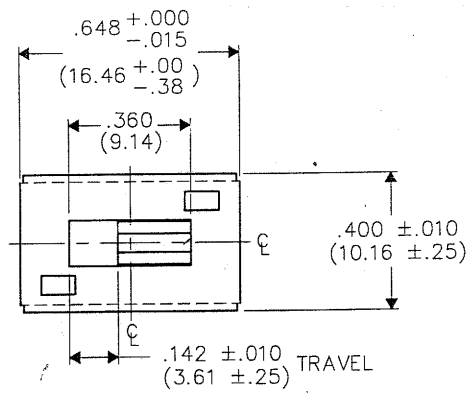
Title: SWIDGET ASSEMBLY
D.P. - D.T.
RAD. KNURL

Division: SWITCH
Dwg. No. GF-126-0318

DIMENSIONS IN INCHES (MILLIMETERS)
DO NOT SCALE DRAWING

Dwg. No. GF-126-0318

P.C. LAYOUT



NOTE:
1. Dimensions shown in () are in millimeters.

