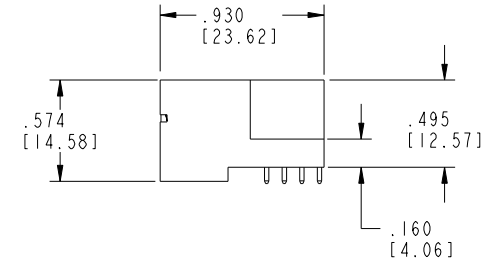
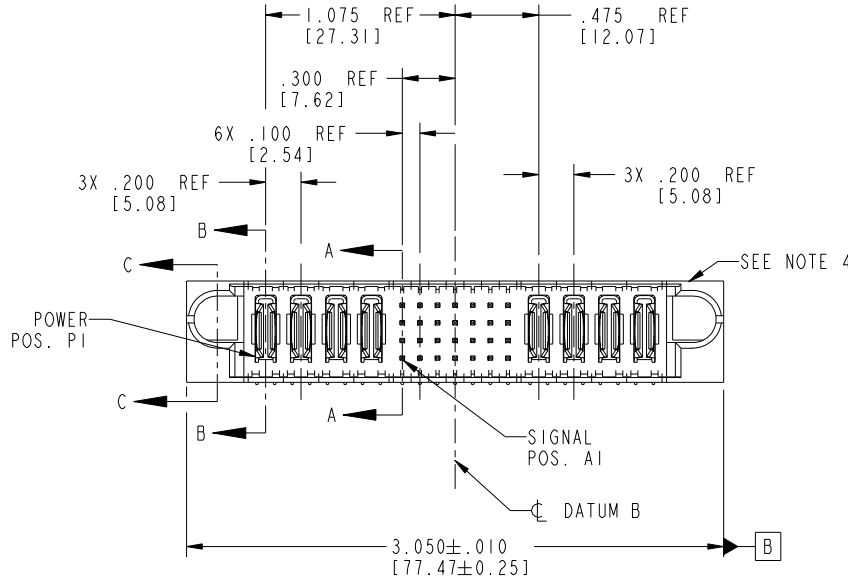


Tous droits strictement réservés. Reproduction ou communication à des tiers interdite sous quelque forme que ce soit sans autorisation écrite du propriétaire.  
 Property of FCI. Copyright FCI. Droits de reproduction FCI.



All rights strictly reserved. Reproduction or issue to third parties in any form whatsoever is not permitted without written authority from the proprietor.  
 Property of FCI. Copyright FCI.

PRODUCT NO.	ROWS	POWER				SIGNAL							POWER									
		E1	P1	P2	P3	P4	1	2	3	4	5	6	7	P5	P6	P7	P8	E2				
51939-055 NOTE ③	D C B A		PC	PC	PC	PC	V	V	V	V	V	V	V	V	V	V	V	PC	PC	PC	PC	



CODE	DIM "M" MATING LENGTH	CONTACT TYPE
PC	N/A [N/A]	POWER
V	.270 [6.86]	SIGNAL
Q	.270 [6.86]	SIGNAL
P	.270 [6.86]	SIGNAL
N	.270 [6.86]	SIGNAL
B	.220 [5.59]	SIGNAL

mat'l code				SEE NOTE 2		tolerances unless otherwise specified		CUSTOMER		FCI	
ltr	ecn no.	dr	date	linear	.XX±.01/0.X±0.3	projection	COPY		www.fciconnect.com		
A	V03-0391	MEM	4/7/03	angles	.XXX±.005/0.XX±0.13		title		4P + 28S + 4P		
B	DG05-0064	SW	04/05/05		.XXX±.002/0.XXX±0.051		RIGHT ANGLE SOLDER HEADER		product family PwrBlade code 213		
C	DG06-0014	JMG	01/10/06		0°±2°	INCH/MM	size		dwg no 51939-055 sheet 1 of 4		
D	DG08-0273	WD	12/30/08	dr		scale	A		51939-055		
				enrg	M. MOSTOLLER 4/7/03	1:1					
				chr	H. BREWBAKER 4/7/03						
				appd	M. MOSTOLLER 4/7/03						
sheet index	revision sheet	D	D	D	D				cage code 22526		
		1	2	3	4						

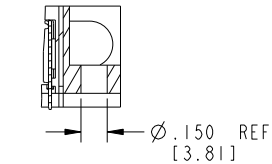
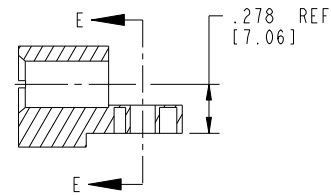
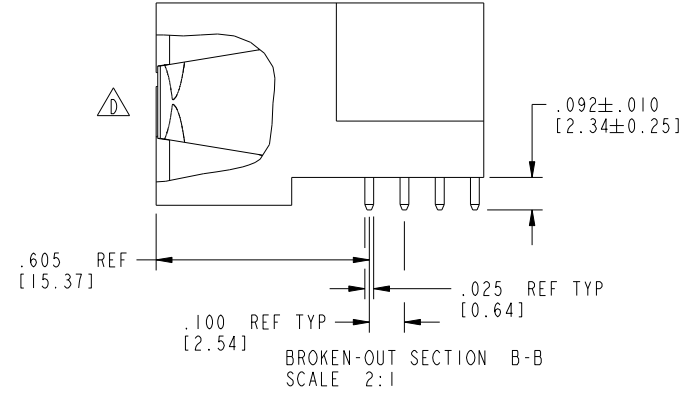
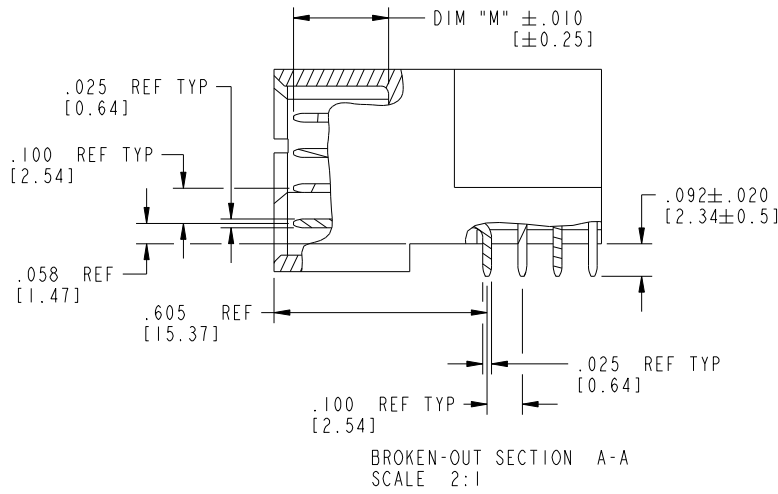
Pro/E

cage code 22526

Tous droits strictement reserves. Reproduction ou communication a des tiers interdicte sous quelque forme que ce soit sans autorisation ecrite du proprietaire. Propriete de c FCI. Droits de reproduction FCI.

All rights strictly reserved. Reproduction or issue to third parties in any form whatever is not permitted without written authority from the proprietor. Property of FCI. Copyright FCI.

PRODUCT NUMBER  
51939-055--  
NOTE ③



mat'l code				SEE NOTE 2		tolerances unless otherwise specified		CUSTOMER		FCJ		
litr	ecn no.	dr	date	linear	.XX±.01/0.X±0.3	projection	COPY	www.fciconnect.com				
D					.XXX±.005/0.XX±0.13	INCH/MM	title	4P + 28S + 4P				
				angles	.XXX±.0020/0.XXX±0.051	scale	RIGHT ANGLE SOLDER HEADER		product family PwrBlade code 213			
				dr	0°±2°	1:1	size	A		sheet 2 of 4		
				engr	M. MOSTOLLER 4/7/03		dwg no	51939-055				
				chr	H. BREWBAKER 4/7/03		scale					
				appd	M. MOSTOLLER 4/7/03							
sheet index	revision sheet											

Pro/E

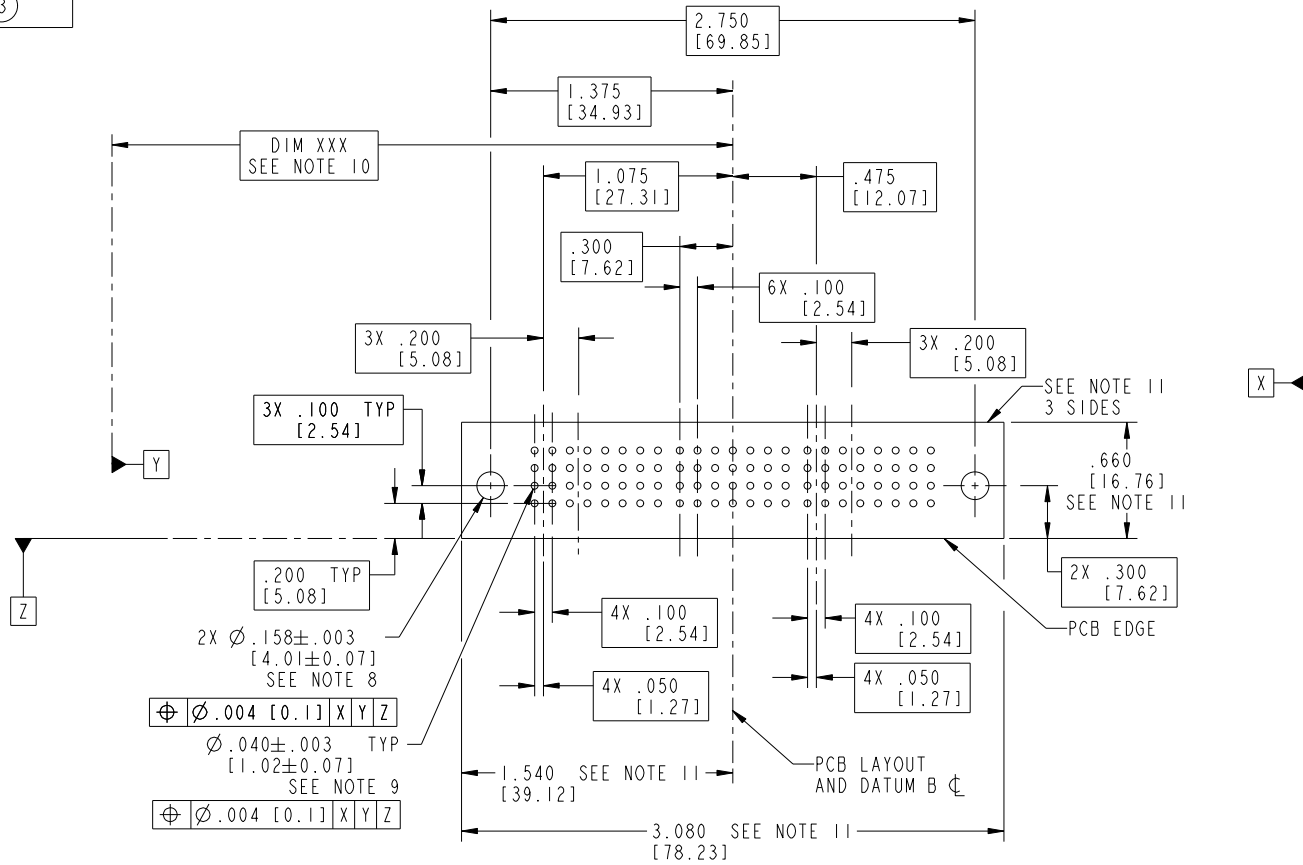
cage code 22526

Tous droits strictement réservés. Reproduction ou communication à des tiers interdite sous quelque forme que ce soit sans autorisation écrite du propriétaire. Propriété de c.FCI. Droits de reproduction FCI.



All rights strictly reserved. Reproduction or issue to third parties in any form whatsoever is not permitted without written authority from the proprietor. Property of FCI. Copyright FCI.

PRODUCT NUMBER  
51939-055--  
NOTE ③



RECOMMENDED PCB LAYOUT

mat'l code				SEE NOTE 2		tolerances unless otherwise specified		CUSTOMER		 www.fciconnect.com	
lfr	ecn no.	dr	date	linear	.XX±.01/0.X±0.3		COPY		 title 4P + 28S + 4P RIGHT ANGLE SOLDER HEADER	product family PwrBlade code 213	
D					.XXX±.005/0.XX±0.13		projection			size dwg no 213	
					.XXX±.002/0.XXX±0.051		 INCH/MM			sheet 3 of 4	
				angles	0°±2°		scale 1:1		A 51939-055		
				dr	M. MOSTOLLER	4/7/03					
				enr	M. MOSTOLLER	4/7/03					
				chr	H. BREWBAKER	4/7/03					
				appd	M. MOSTOLLER	4/7/03					
sheet index	revision sheet										

cage code 22526

Pro/E

Tous droits strictement reserves. Reproduction ou communication a des tiers interdite sous quelque forme que ce soit sans autorisation écrite du propriétaire. Propriete de c FCI. Droits de reproduction FCI.

All rights strictly reserved. Reproduction or issue to third parties in any form whatever is not permitted without written authority from the proprietor. Property of FCI. Copyright FCI.

PRODUCT NUMBER  
51939-055--  
NOTE (3)

NOTES:

1. DIMENSIONS AND TOLERANCES ARE IN ACCORDANCE WITH ASME Y14.5M, 1994 UNLESS OTHERWISE SPECIFIED.

CONNECTOR NOTES:

- (2) HOUSING MATERIAL: UL 94 V-0 GLASS FILLED HIGH-TEMP THERMOPLASTIC  
POWER CONTACT MATERIAL: COPPER ALLOY  
SIGNAL PIN MATERIAL: COPPER ALLOY
- △ 3. SEE ITEM 1 & 2 IN PRINT 10064183 FOR PLATING SPEC OF 51939-055 AND 51939-055LF RESPECTIVELY.
- (4) MANUFACTURER'S NAME, P/N, AND DATE CODE TO APPEAR ON THIS SURFACE.
- 5. PRODUCT SPECIFICATION GS-12-149.  
APPLICATION SPECIFICATION BUS-20-067.
- 6. PACKAGED IN TRAYS.
- PCB NOTES:
- 7. ALL HOLE DIAMETERS ARE FINISHED HOLE SIZE.
- (8) MOUNTING HOLES, WHERE APPLICABLE, ARE UNPLATED.
- (9)  $\varnothing .0453 \pm .0010$  [ $1.151 \pm 0.025$ ] DRILLED HOLES PLATED WITH  
.0003 [0.008] MIN SnPb OVER .001 [0.03]  
TO .003 [0.08] Cu PLATING TO ACHIEVE  
 $\varnothing .040 \pm .003$  [ $1.02 \pm .07$ ] HOLE.
- (10) "DIM XXX" TO BE DETERMINED BY THE CUSTOMER.
- (11) CONNECTOR KEEP-OUT ZONE.
- 12. A △ SYMBOL WILL BE NEXT TO ANY DIMENSION, VIEW, OR NOTE WHICH HAS BEEN MODIFIED WITH THE CURRENT DRAWING REVISION.

mat'l code		SEE NOTE 2		tolerances unless otherwise specified		CUSTOMER		FCJ		www.fciconnect.com	
ltr	ecn no.	dr	date	linear	.XX±.01/0.X±0.3	COPY					
D				linear	.XXX±.005/0.XX±0.13	projection	title 4P + 28S + 4P				
				angles	.XXX±.002/0.XXX±0.051			RIGHT ANGLE SOLDER HEADER			
				dr	0° ± 2°	INCH/MM		product family PwrBlade		code 213	
				enrg	M. MOSTOLLER 4/7/03	scale 1:1		size	dwg no	sheet 2 of 4	
				chr	H. BREWBAKER 4/7/03	A		51939-055		4 of 4	
				appd	M. MOSTOLLER 4/7/03						
sheet index	revision sheet										

cage code 22526