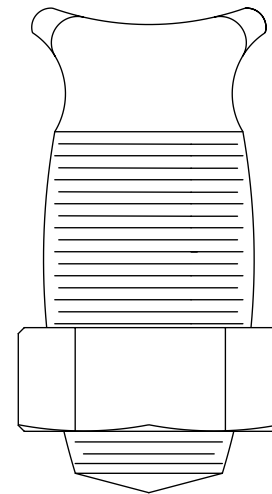
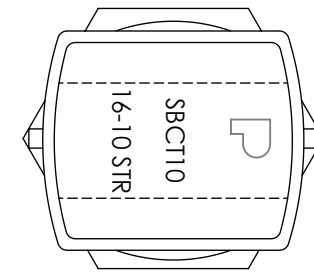
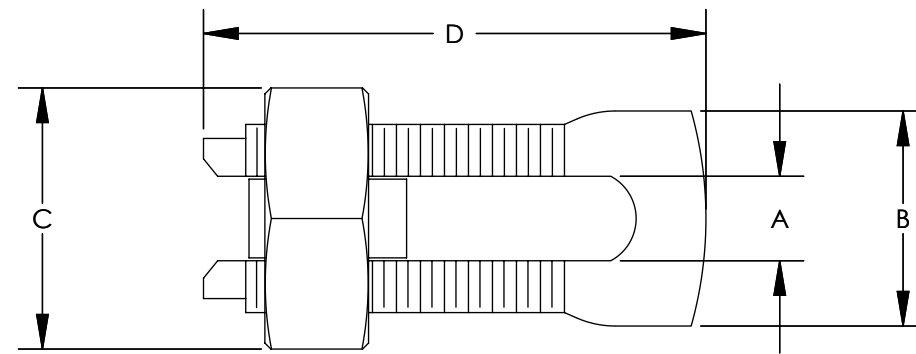


NOTES:

1. HIGH STRENGTH ELECTROLYTIC COPPER HIGHLY RESISTANT TO CORROSION AND SEASON CRACKING.
2. ELECTRO-TIN PLATED BOLT, NUT SPACER AND PRESSURE BAR.
3. WHEN CONNECTING ALUMINUM OR ACSR WIRE, USE OF PANDUIT OXIDE JOINT COMPOUND CMP-100 IS RECOMMENDED.
4. UL LISTED & CSA CERTIFIED (FOR APPLICABLE PARTS) WITH COPPER CABLE.
5. *THE CONDUCTOR SIZES SHOWN ARE FOR EQUAL RUN AND TAP COMBINATIONS FOR BOTH SOLID AND STRANDED WIRE UNLESS OTHERWISE LISTED.

CATALOG NUMBER	COPPER & ALUMINUM			ALUMINUM RANGE NOT U.L. LISTED OR CSA CERTIFIED		COPPER WELD MAX STR.	WIRE DIAMETER RANGE IN.	APPROXIMATE DIMENSIONS (IN INCHES)				REQUIRED TORQUE (IN. - LB.)
	RANGE OF EQUAL RUN & TAP		MIN TAP WITH ONE MAX RUN	ALUMINUM	ACSR			A	B	C	D	
	MIN.	MAX										
SBCT10-C	16 STR	10 STR	16 STR	16 STR - 10 STR	----	----	.57-.116	0.15	0.38	0.49	0.87	80
SBCT750-1	2/0 STR	750 kcmil	2/0 STR	250MCM - 750MCM	4/0-666.6	19 NO. 5	.563-.999	1.03	1.93	2.11	3.78	1000
SBCT1000-1	4/0 STR	1000 kcmil	4/0 STR	350MCM - 1000MCM	300-900	----	.682-1.162	1.23	2.29	2.53	4.02	1100



REV	DATE	BY	CHK	APR	DESCRIPTION	ECN
03	5/15	JHNU	JHNU	RGB	REVISED NOTE 4 TO REMOVE ALUMINUM FROM UL LISTED WIRE REVISED TITLE BLOCK	N10899BG-DC

TITLE COPPER DUAL RATED SPLIT BOLT CONNECTOR SBCT SERIES CUSTOMER DRAWING	
ITEM REVISION NAME N10899BG/03	PANDUIT
DATASET FILE NAME N10899BG-C41212/03.SLDDRW	
UNLESS OTHERWISE SPECIFIED, DIMENSIONAL TOLERANCES ARE: IN [mm] .X ± .XXX ± .XX ± .02 [.5] ANGLES ±	
THIRD ANGLE PROJECTION	
DRAWN BY T SMA	DATE 3/97
CHK TM	SCALE N/A
DRAWING NUMBER C41212	
SHEET 1 OF 1	
SIZE B	