

# Customer Information Sheet

DRAWING No.: S417-46

SHEET 3 OF 3

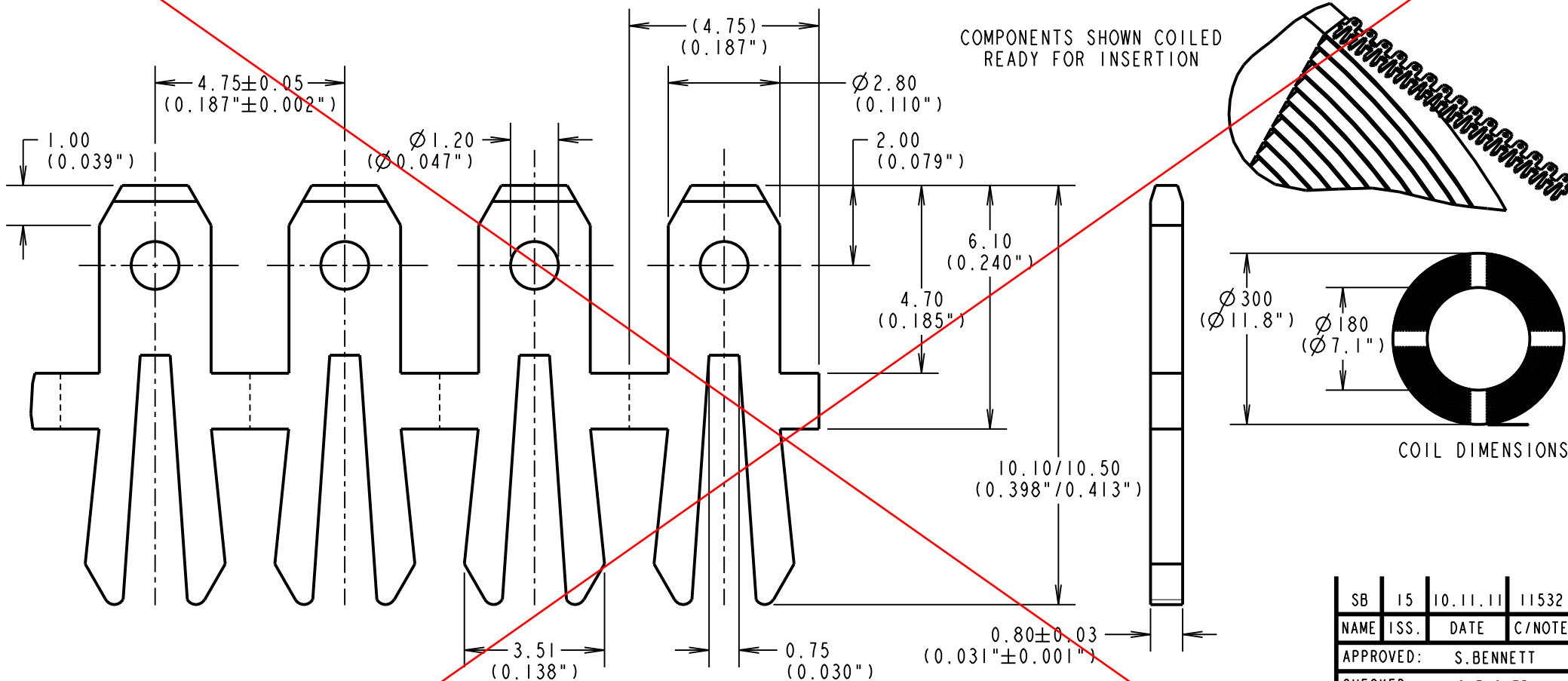
IF IN DOUBT - ASK

©

NOT TO SCALE

THIRD ANGLE PROJECTION

ALL DIMENSIONS IN mm



**NOTES:**

1. QUANTITY PER TABS PER COIL = 12K.  
TOTAL WEIGHT PER COIL = 2.1kg.
2. RECOMMENDED MOUNTING HOLE SIZE = 2.80 x 1.00 ( 0.110" x 0.039").
3. ALL TOLERANCES FOR INCHES ARE ±0.004" UNLESS OTHERWISE STATED.

**OBSOLETE**

ORDER CODE:  
**S417-46**  
FINISH:  
46 = 4µ 100% TIN  
(160µ" 100% TIN)

SB	15	10.11.11	11532
NAME	ISS.	DATE	C/NOTE
APPROVED:		S.BENNETT	
CHECKED:		S.FLOWER	
DRAWN:		P. D. COLLINS	
CUSTOMER REF.:			
ASSEMBLY DRG:			

**HARWIN**

www.harwin.com  
technical@harwin.com

THIS DRAWING AND ANY INFORMATION OR DESCRIPTIVE MATTER SET OUT HEREON ARE CONFIDENTIAL AND COPYRIGHT PROPERTY OF THE HARWIN GROUP AND MUST NOT BE DISCLOSED, LOANED, COPIED OR USED FOR MANUFACTURING, TENDERING OR FOR ANY OTHER PURPOSE WITHOUT THEIR WRITTEN PERMISSION.

**TOLERANCES**  
X. = ±1mm  
X.X = ±0.25mm  
X.XX = ±0.10mm  
X.XXX = ±0.01mm  
**ANGLES = ±5°**  
UNLESS STATED

**MATERIAL:**  
BRASS CW508L H150  
TO BS EN 1652  
(CuZn37 HARD)  
**FINISH:** SEE ORDER CODE  
**S/AREA:** mm<sup>2</sup>

**TITLE:**  
2.8mm (0.110") VERTICAL  
FISH-TAIL COILED TAB TERMINAL  
**DRAWING NUMBER:**  
**S417-46**  
SHT 3 OF 3