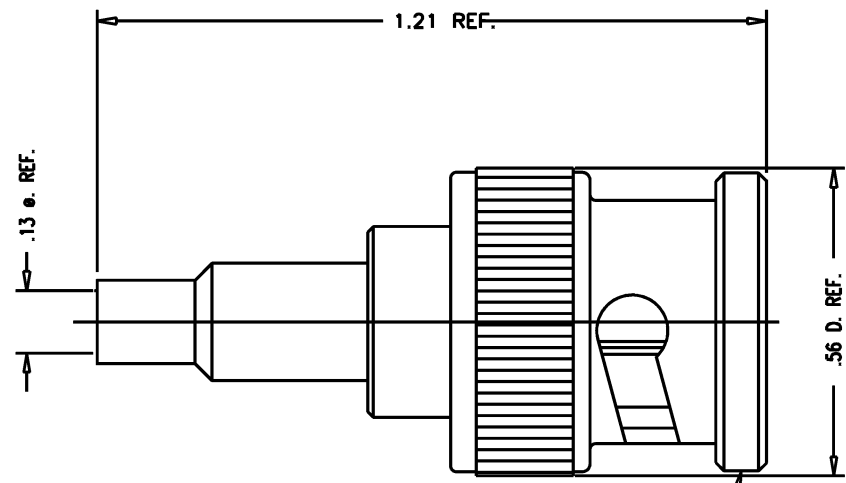


| | | |
|----------|--------|-----------|
| DASH NO. | M CODE | MADE FROM |
|----------|--------|-----------|

GSD

2065-29-9

| REVISIONS | |
|-----------|----------------------------|
| ISSUE | CHANGES |
| 0 | ER 39338 JPK 09/29/05 |
| 1 | CN 39621 A BAM 09/13/06 |



STAMP: KINGS 2065-29-9
YR WK (DATE CODE)

NOTES:

- FOR USE WITH BELDEN 1279P & 1279R CABLES.
- FOR CABLING INSTRUCTIONS SEE 3-764-1.
- FOR CRIMPING USE DIE KTH-2276.
- INTERFACE PER KINGS ES-17, FIG 2..
- MATERIALS:
 - INSULATOR-TEFLON, ASTM-D-4894
 - GASKET-SILICONE RUBBER, A-A-59588
 - SPRING WASHER } BER. COP., ASTM-B-196
 - OUTER CONTACT }
 - K-GRIP SLEEVE-COMMERCIAL BRONZE, ASTM-B-135
 - ALL OTHER METAL PARTS-BRASS, ASTM-B16
- FINISHES:
 - CENTER CONTACTS-GOLD PLATE PER ASTM-B488
 - SPRING WASHER- SILVER PLATE PER ASTM-B700
 - ALL OTHER METAL PARTS-KINGS TARNISH RESISTANT NICKEL FINISH (TR-5)
- ELECTRICAL CHARACTERISTICS:
 - NOMINAL IMPEDANCE: 75 OHMS
 - VOLTAGE RATING: 500 VRMS
 - FREQUENCY RANGE: DC TO 3 GHz

2065-29-9SD

SCALE 4 : 1

APPROX SURFACE AREA N/A

USED ON

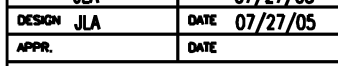
REF: EQR 944

PL, 75 BNC

DRAWN JLA DATE 07/27/05

DESIGN JLA DATE 07/27/05

APPR. DATE



2065-29-9

GSD