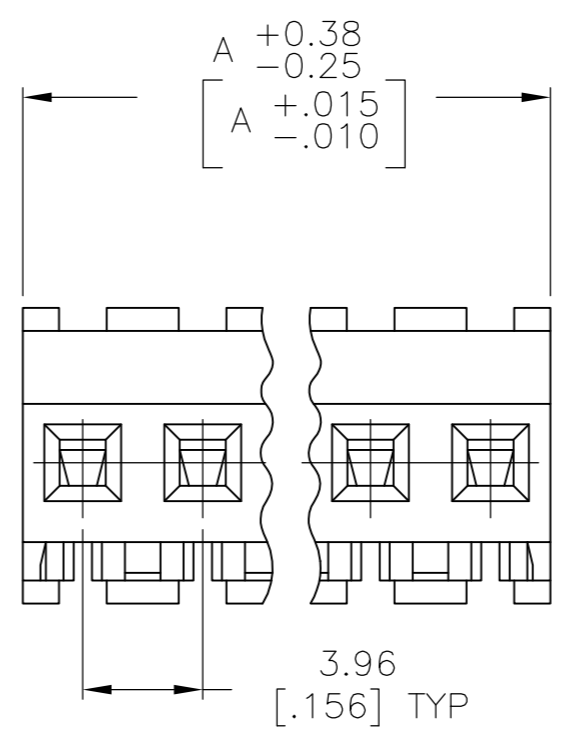
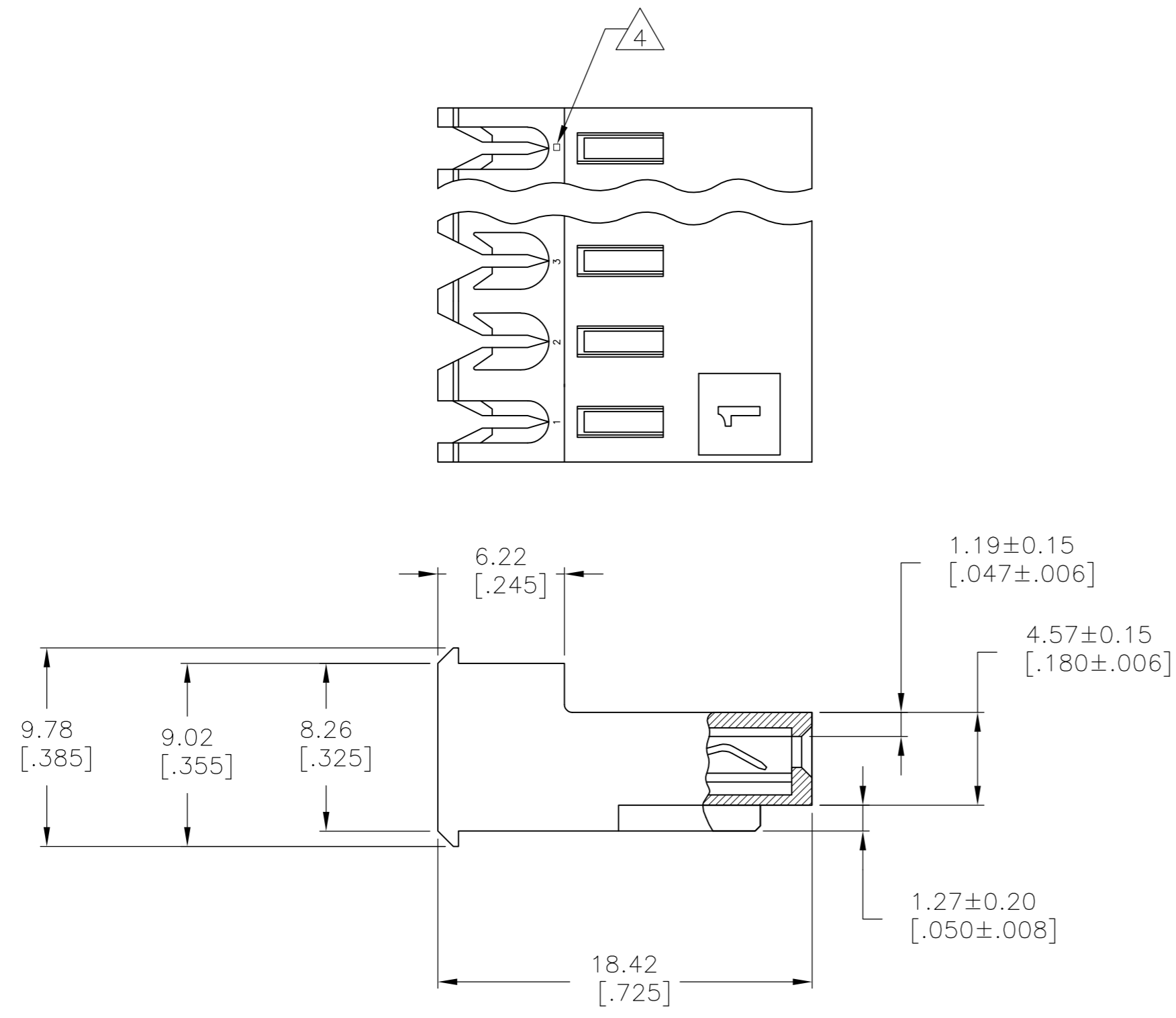


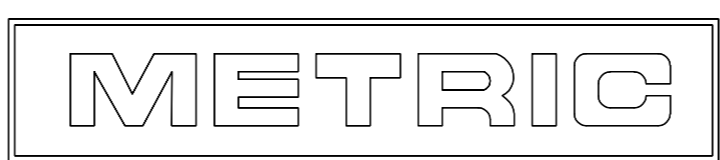
THIS DRAWING IS UNPUBLISHED. RELEASED FOR PUBLICATION
 © COPYRIGHT - By - ALL RIGHTS RESERVED.

LOC	DIST	REVISIONS			
P	LTR	DESCRIPTION	DATE	DWN	APVD
CM	00	E1	REVISED PER ECO-11-014117	13JUL11	HMR SM



- 1 MATERIAL: CONNECTOR - NYLON UL94V-2 (RED).
 CONTACTS - 0.30[.012] THICK COPPER ALLOY BRIGHT TIN-LEAD
 0.00203[.000080] MIN THICK FOR -2 THRU -28
 - 0.30[.012] THICK COPPER ALLOY MATTE WHISKER
 MITIGATED TIN 0.00203[.000080] MIN THICKNESS
 OVER NICKEL UNDERPLATE FOR -32 THRU -58.
- 2. CONTACTS ACCEPT 22 AWG WIRE WITH 2.41[.095] MAX INSULATION DIAMETER.
- 3. CONTACTS MUST ACCEPT 1.14±0.03[.045±.001] POST AND REMAIN LOCKED IN POSITION.
- 4 IDENTIFICATION NUMBER FOR LAST CIRCUIT MAY NOT APPEAR ON ALL ASSEMBLIES.
- 5. DIMENSIONS IN BRACKETS ARE IN INCHES.
- 6. HOUSING FEATURES ARE: FEED-THRU WITHOUT LOCKING RAMP.
- 7 CHARACTER SHALL BE 2.06[.081] HIGH ON A 4.01[.158] SQUARE FROSTED BACKGROUND.

FINISH	DIM A	NO. OF CIRCUITS	PART NO.
TIN	19.81 [.780]	5	3-643248-5
OBSOLETE TIN-LEAD	19.81 [.780]	5	-643248-5-



THIS DRAWING IS A CONTROLLED DOCUMENT.

DWN B. LEWIS 12FEB91	TE Connectivity MTA-156 CONNECTOR ASSEMBLY, 22 AWG, SPECIAL MARKING
CHK R. SWING 12FEB91	
APVD D. CLARK 20FEB91	
PRODUCT SPEC 108-1051	
APPLICATION SPEC 114-1020	NAME SIZE CAGE CODE DRAWING NO RESTRICTED TO
MATERIAL 1	WEIGHT CUSTOMER DRAWING SCALE 4:1 SHEET 1 OF 1 REV E1