

Compensated High Inductance Choke, 3-phase



**Description**

- Current compensated choke
- 3-phase choke
- Flexible wire
- Flange for mounting onto printed circuit board
- Fully potted resin

**Standards**

- EN 60938
- UL 1283
- CSA 22.2 no 8

**Applications**

- Placed in front of frequency converter
- Stepper motor drives
- UPS-systems
- Inverter

**Weblinks**

[pdf datasheet](#), [html-datasheet](#), [General Product Information](#), [Approvals](#), [CE declaration of conformity](#), [RoHS](#), [CHINA-RoHS](#), [REACH](#), [Distributor-Stock-Check](#), [Detailed request for product](#)

**Technical Data**

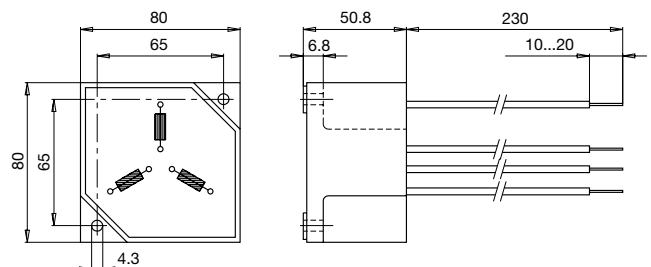
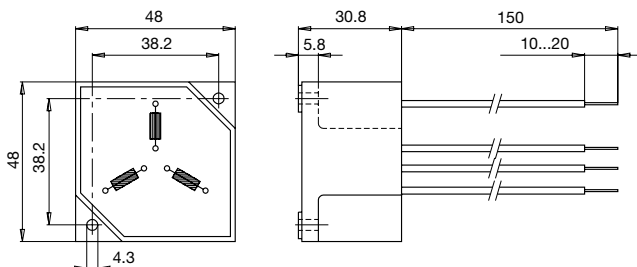
Rated voltage	up to 540 VAC	Test Voltage	2.5kV, 50Hz, 2 sec, winding to winding
	up to 760 VDC	Isolation Voltage	2.5kV eff., 50Hz, 2sec, winding to ambient
Rated Current	3 - 16A @ Ta 40 °C	Climatic Category	25/100/21 acc. to IEC 60068-1
Rated inductance	4.0 - 50mH, Tol. -30% +50%	Allowable Operation Temp.	-25 °C to 100 °C
Power Operating Frequency	50 - 400Hz		
Terminal Type	Flexible wire		
Weight	145 - 1840 g		
Material: Housing	UL 94V-0		
Sealing Compound	UL 94V-0		

Detailed information on product approvals, code requirements, usage instructions and detailed test conditions can be looked up in [General Product Information](#)

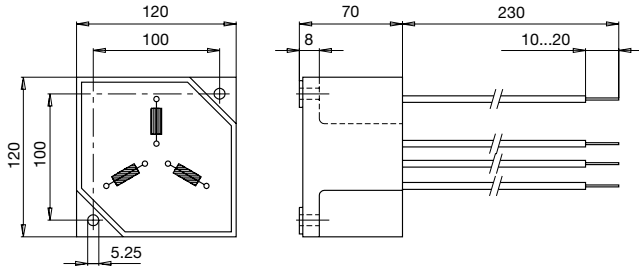
**Dimension**

Case 29-3W

Case 31-3W

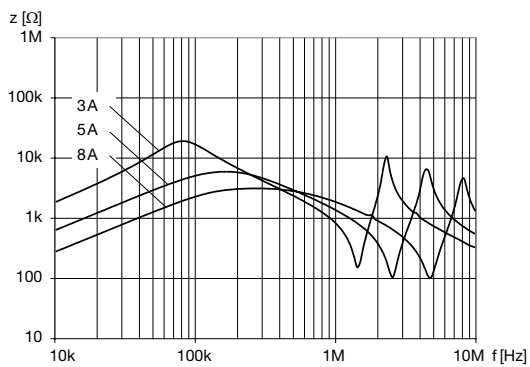


## Case 33-3W

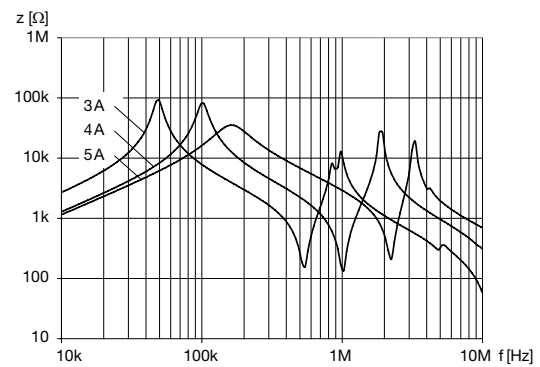


## Impedance curves

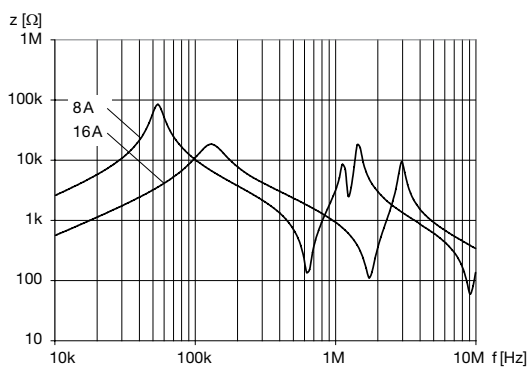
DKLP-0329-xxxx



DKLP-0331-xxxx



DKLP-0333-xxxx



## All Variants

$I_n$ [A]	$L_n$ [mH]	$R_{Cu}$ [m $\Omega$ ]	Power <sub>loss</sub> [W]	$f_{RES}$ [MHz]	Copper $\phi$ [mm]	Weight [g]	Housings	Packing unit [pcs.]	Order Number
3	30	130	3.5	0.13	0.71	145g	29-3W	12	<a href="#">DKLP-0329-0330</a>
5	10	48	3.6	0.15	0.9	145g	29-3W	12	<a href="#">DKLP-0329-0510</a>
8	4	22	4.2	0.4	1.12	145g	29-3W	12	<a href="#">DKLP-0329-0804</a>
3	50	260	7	0.055	0.71	509g	31-3W	2	<a href="#">DKLP-0331-0350</a>
4	30	155	7.5	0.075	0.8	512g	31-3W	2	<a href="#">DKLP-0331-0430</a>
5	20	100	7.5	0.145	0.9	514g	31-3W	2	<a href="#">DKLP-0331-0520</a>
8	40	110	21	0.05	1.12	1726g	33-3W	1	<a href="#">DKLP-0333-0840</a>

$I_n$ [A]	$L_n$ [mH]	$R_{Cu}$ [mΩ]	Power <sub>loss</sub> [W]	$f_{RES}$ [MHz]	Copper ø [mm]	Weight [g]	Housings	Packing unit [pcs.]	Order Number
16	10	30	23	0.14	1.6	1840 g	33-3W	1	DKLP-0333-1610

Availability for all products can be searched real-time:<http://www.schurter.com/en/Stock-Check/Stock-Check-SCHURTER>