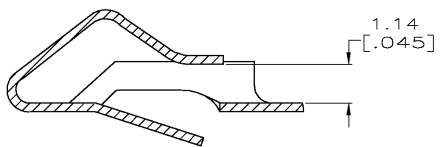
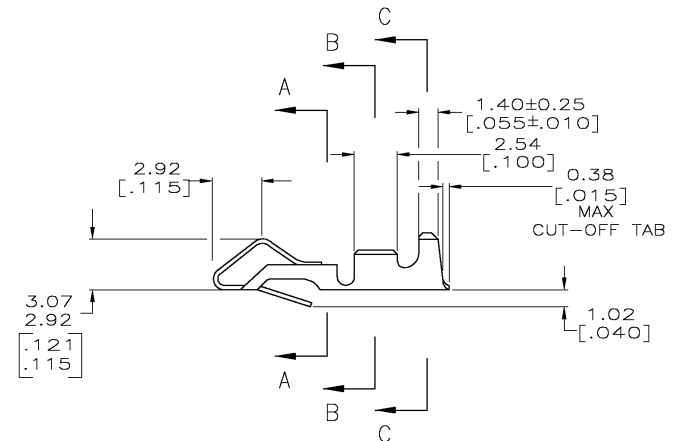
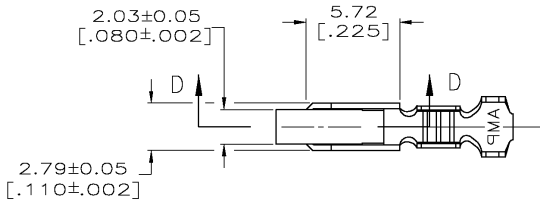
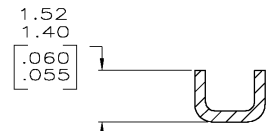


LOC	DIST	REVISIONS			
P	U/R	DESCRIPTION	DATE	DWN	APVD
CM	00	E	REV PER ECN 0638-0383-03	21AUG03	SC JE

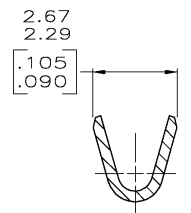
- ① 0.00203 [.000080] MIN BRIGHT TIN-LEAD OVER
0.00127 [.000050] MIN NICKEL.
- ② 0.00330 [.000130] MAX PRE-TIN.
- 3. WIRE RANGE: 0.2-0.9mm² (24-18 AWG).
INSULATION RANGE: 2.79 [.110] DIA MAX.
- 4. DIMENSIONS IN BRACKETS ARE IN INCHES.
- ⑤ 0.00203 [.000080] MIN BRIGHT TIN OVER
0.00127 [.000050] MIN NICKEL.



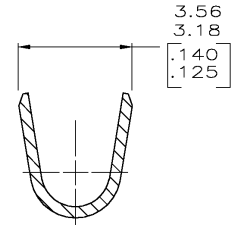
SECTION D-D
SCALE 10:1



SECTION A-A
SCALE 10:1



SECTION B-B
SCALE 10:1



SECTION C-C
SCALE 10:1

METRIC

⑤	3-640706-1
②	640706-2
①	640706-1
FINISH	PART NO

THIS DRAWING IS A CONTROLLED DOCUMENT.		DWN S. CARPENTER	21AUG2003	Tyco Electronics Corporation Harrisburg, PA 17105
DIMENSIONS: INCHES		CHK J. ELLIS	21AUG2003	
TOLERANCES UNLESS OTHERWISE SPECIFIED:		APVD J. ELLIS	21AUG2003	RECEPTACLE, SL-156, LOOSE PIECE
0 PLC ± 1 PLC ± 2 PLC ± 0.13 [.005] 3 PLC ± 4 PLC ± ANGLES ±		NAME PRODUCT SPEC		
MATERIAL 0.33 [.013] BRASS		FINISH SEE TABLE		RESTRICTED TO
CUSTOMER DRAWING		SIZE A2	CAGE CODE 00779	DRAWING NO 640706
SCALE 5:1		SHEET 1 OF 1		REV E

A/C BUSINESS GROUP, 3323 177-34 KIM SALMONY

640706

A