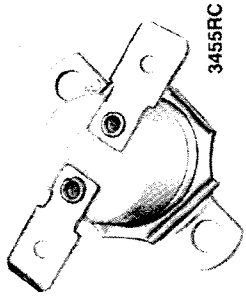


1700



# UNIVERSAL THERMOSTATS 3455RC 15 AMP HIGH TEMPERATURE SERIES



3455RC

**APPLICATIONS:**

- Copy Machines
- Power Supplies
- Telecommunications
- Ovens

**BENEFITS:**

- Electrical Rating to 15 Amp 120 VAC Resistive
- Environmental Exposure 0° to 550°F (-18° to 288 °C)
- U.L., C.S.A., European Approval Agency Listings
- Single Contact (SPST)
- Pre-set and Tamperproof
- High Density Ceramic Base

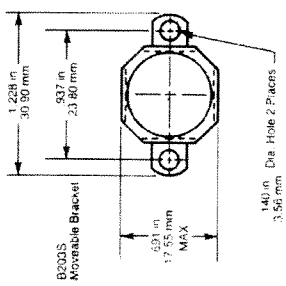
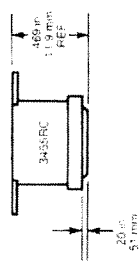
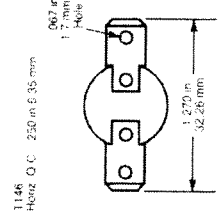
**SHIPPED FROM STOCK**

**OPEN ON RISE**

TEMP °F			TEMP °C			PART NUMBER
OPEN	TOL +/-	CLOSE	OPEN	TOL +/-	CLOSE	
65	5	30	18	3	-1	3455RC-100-220
75	5	40	24	3	4	3455RC-100-221
85	5	55	29	3	13	3455RC-100-222
95	5	65	35	3	18	3455RC-100-223
105	5	75	41	3	24	3455RC-100-224
115	5	85	46	3	29	3455RC-100-225
125	5	95	52	3	35	3455RC-100-226
135	5	105	57	3	41	3455RC-100-227
145	5	115	63	3	46	3455RC-100-228
155	5	125	68	3	52	3455RC-100-229
165	5	135	73	3	57	3455RC-100-230
175	5	145	79	3	63	3455RC-100-231
185	5	155	85	3	68	3455RC-100-232
195	5	165	91	3	73	3455RC-100-233
205	6	175	96	4	79	3455RC-100-234
215	6	185	102	4	85	3455RC-100-235
225	6	195	107	4	91	3455RC-100-236
235	6	205	113	4	96	3455RC-100-237
245	6	215	118	4	102	3455RC-100-238
255	7	225	124	4	107	3455RC-100-239
275	7	245	135	4	118	3455RC-100-240
295	7	265	146	4	129	3455RC-100-241
315	10	275	157	6	135	3455RC-100-242

**CLOSE ON RISE**

TEMP °F			TEMP °C			PART NUMBER
CLOSE	TOL +/-	OPEN	CLOSE	TOL +/-	OPEN	
70	8	35	21	5	2	3455RC-100-243
90	8	60	32	5	16	3455RC-100-244
110	8	80	43	5	27	3455RC-100-245
130	8	100	54	5	38	3455RC-100-246
150	8	120	66	5	49	3455RC-100-247
170	8	140	77	5	60	3455RC-100-248
190	8	160	88	5	71	3455RC-100-249
210	8	180	99	5	82	3455RC-100-250
230	8	200	110	5	93	3455RC-100-251



**RATINGS -- RESISTIVE**

CATALOG ELECTRICAL TYPE	120 VAC	240 VAC	277 VAC
3455RC	100,000 100,000 6,000 6,000	10 AMP 2.2 FLA 13.2 LRA 2.9 FLA 17.4 LRA 125 VA	10 AMP — — —

FLA: Full Load Amps  
LRA: Locked Rotor Amps