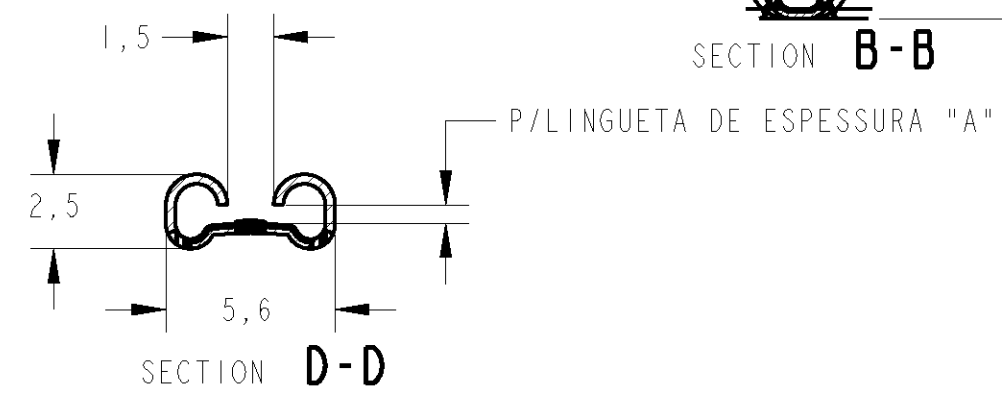
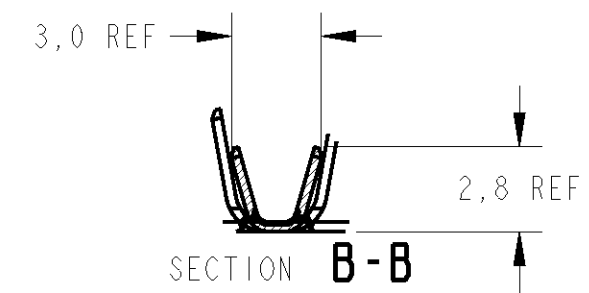
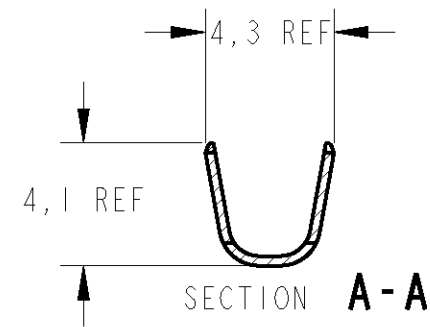
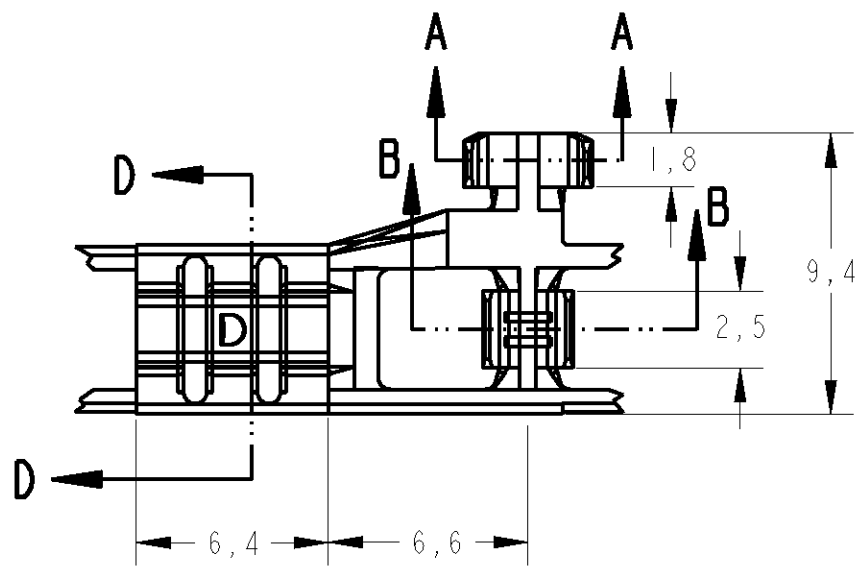


THIS DRAWING IS UNPUBLISHED. RELEASED FOR PUBLICATION 20  
 © COPYRIGHT 20 BY TYCO ELECTRONICS CORPORATION. ALL RIGHTS RESERVED.

LOC	DIST	REVISIONS				
P	LTR	DESCRIPTION	DATE	DWN	APVD	
AP	-	J	REVISADO EC LB00-0056/02	12FEB2003	H.C	WLS
		K	REV. BY ECO07-027481	28FEB08	HC	WLS
		L	REV. BY ECO-08-013701	03JUNE08	HC	WLS



OBSOLETE	0,8	626413-7	ESTANHADO	BRONZE FOSF.	626412-7
OBSOLETE	0,5	626413-6		BRONZE FOSF.	626412-6
OBSOLETE	0,8	626413-5		BRONZE FOSF.	626412-5
OBSOLETE	0,8	626413-4	ESTANHADO	LATAO	626412-4
-	0,8	626413-3	-	LATAO	626412-3
-	0,5	626413-2	ESTANHADO	LATAO	626412-2
-	0,5	626413-1	-	LATAO	626412-1
ESPESSURA "A"		LOOSE PIECE PN	FINISH	MATERIAL	PART NUMBER

THIS DRAWING IS A CONTROLLED DOCUMENT FOR TYCO ELECTRONICS CORPORATION. IT IS SUBJECT TO CHANGE AND THE CONTROLLING ENGINEERING ORGANIZATION SHOULD BE CONTACTED FOR THE LATEST REVISION.

DWN	H.C. CANTERI	12FEB2003	TYCO ELECTRONICS do Brasil LTDA. São Paulo, Brasil
CHK	W.L. STEFANI	12FEB2003	
APVD	H.C. CANTERI	12FEB2003	
NAME	-		
DIMENSIONS:	TOLERANCES UNLESS OTHERWISE SPECIFIED:		.187 FLAG FASTON RECEP.
mm	0 PLC ±- 1 PLC ±0,4 2 PLC ±- 3 PLC ±- 4 PLC ±- ANGLES ±1°		
MATERIAL	SEE TABLE	FINISH	SIZE A3 CAGE CODE 00779 DRAWING NO. C-626412 RESTRICTED TO - SCALE 4/1 SHEET 1 OF 1 REV L

WIRE RANGE 20/16AWG  
 INS. DIA RANGE 2,3/3,3mm

CUSTOMER DRAWING