



**MICRO SWITCH**

FREEPORT, ILLINOIS, U.S.A.  
A DIVISION OF HONEYWELL

FED. MFG. CODE 91829

# SWITCH -- BASIC

CATALOG LISTING



## V3-101

### CKB 0100

**M V3-101**

DRAWING NUMBER

ISSUE **10**

**12/17**

REVISIONS

A CO20189

25 MAY 65

B CO21688

M B F

3 OCT 66

C CO24941

M B S

3 DEC 68

D CO26075

M B S

26 AUG 69

E CO31748

S D

2 APR 73

F CO 32395

GLH

14 AUG 73

G CU 59921

SMA

29 SEPT 86

H CO74475

K D R

15 APR 93

REPLACES

RELEASE NO.

CHECK

27 MAY 65

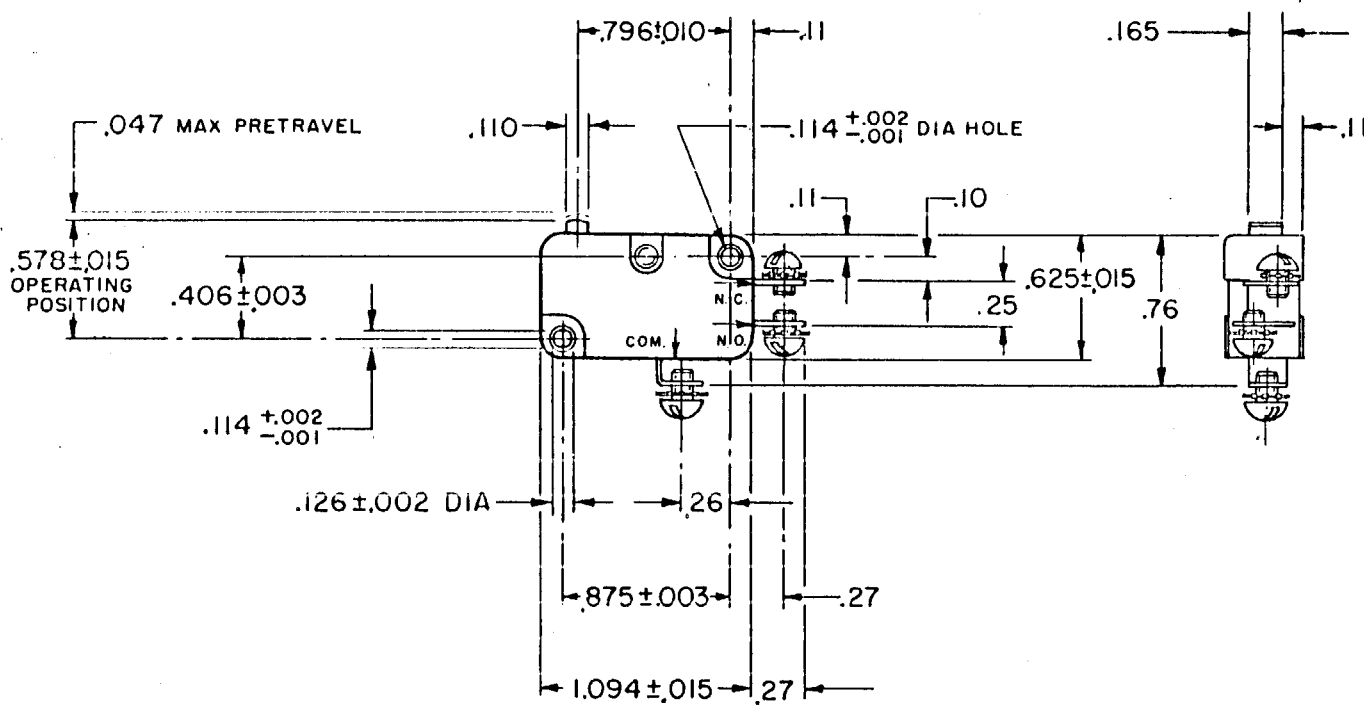
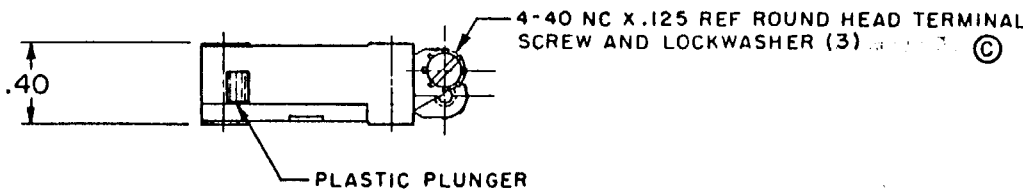
CHECK

21 MAY 65

CHECK

25 MAY 65

DRAWN



THIS DRAWING COVERS A PROPRIETARY ITEM AND IS THE PROPERTY OF MICRO SWITCH, A DIVISION OF HONEYWELL. THIS DRAWING IS NOT TO BE COPIED OR USED WITHOUT THE APPROVAL OF MICRO SWITCH.

CHARACTERISTICS	ELECTRICAL DATA	SCALE FULL
OPERATING FORCE----- 8 OZ MAX	CONTACT ARRANGEMENT S P D T	DO NOT SCALE PRINT
RELEASE FORCE----- 2 OZ MIN	11A-1/3HP-125-250-277 VAC - L156 - 1/2A-125 VDC; 1/4A-250 VDC 4A-125 VAC "L"	UNLESS OTHERWISE NOTED DIMENSIONS ARE IN INCHES <b>TOLERANCES ARE:</b>
DIFFERENTIAL TRAVEL----- .006-.016		ONE PLACE (.0) ±.030 TWO PLACE (.001) ±.015 THREE PLACE (.000) ±.005 ANGLES ±
OVERTRAVEL----- .040 MIN		WEIGHT .017 LB
FREE POSITION----- .625 MAX		
RELEASE TRAVEL----- .007 MIN		

50378