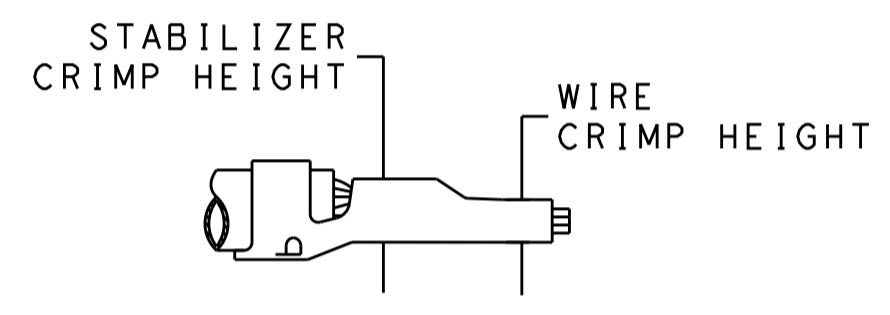


ATLANTIC VERSION TERMINATOR INTERFACE ADAPTER	PART NUMBER	REVISION	DESCRIPTION	FEED TYPE	CONVERT TO	PART NUMBERS REQUIRED					
	2266225-1	B	FINE CRIMP HEIGHT ADJUST	MECHANICAL	PNEUMATIC FEED	2119950-1	1338685-1	5-18022-5	2119641-1	2119799-1	2063440-1
	2266225-2	B	FINE CRIMP HEIGHT ADJUST	PNEUMATIC	SERVO LATCH PLATE	2119951-1	-	8-2266225-5	1901094-3	2-1752354-6	2168400-6 (QUANTITY 2)
					SMART APPLICATOR	2161326-1	-	8-2266225-4	-	-	
					MECHANICAL FEED	2119949-1	1338685-1	5-18022-5	2119653-1	-	-
	2266225-5	B	FINE CRIMP HEIGHT ADJUST	SERVO LATCH PLATE	SERVO LATCH PLATE	2119951-1	-	8-2266225-5	1901094-3	2-1752354-6	2168400-6 (QUANTITY 2)
					SMART APPLICATOR	2161326-1	-	8-2266225-4	-	-	
					MECHANICAL FEED	2119949-1	1338685-1	5-18022-5	2119653-1	-	-
2266225-6	B	NON-CRIMP HEIGHT ADJUST	SERVO LATCH PLATE	PNEUMATIC FEED	2119950-1	1338685-1	5-18022-5	2119641-1	2119799-1	2063440-1	
				-	-	-	-	-	-	-	
2266225-7	B	FINE CRIMP HEIGHT ADJUST	NONE	-	-	-	-	-	-	-	
7-2266225-*	-	SEE CRIMP TOOLING KITS BELOW	-	-	-	-	-	-	-	-	

APPLICATOR DATA		
CRIMP	SIZE	TYPE
WIRE	2.79 mm [.110]	F
STABILIZER	2.79 mm [.110]	O
INSULATION	2.79 mm [.110]	SC

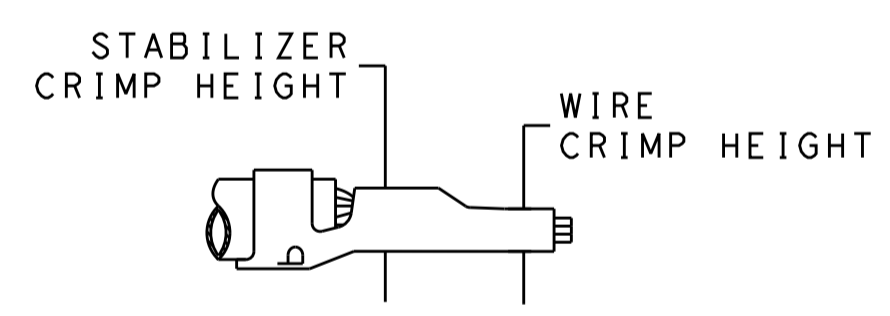
PART NO	REV	WIRE SIZE	WIRE CRIMPER	STABILIZER CRIMPER	INSULATION CRIMPER	ANVIL
7-2266225-7	B	12 AWG	7-456408-6	815664-2	1803146-3	1-1633923-1
7-2266225-8	B	14 AWG	2-456408-5	815664-6	1803146-3	1-1633923-1
7-2266225-9	B	18-16 AWG	2-456408-6	815664-7	1803146-3	1-1633923-1

TERMINAL DATA: TE TERMINAL		TE CRIMP SPECIFICATION	
TERMINAL NAME: AMP-IN			
WIRE STRIP LENGTH		INSULATION DIAMETER RANGE	
4.83-5.59 mm [.190-.220 IN]		Ø2.29-2.54 mm [.090-.100 IN]	
TERMINAL APPLICATION SPECIFICATION	114-1016	-	-
TERMINALS APPLIED			
TE TERMINAL	TE TERMINAL	TE TERMINAL	TE TERMINAL
3-794013-1			



WIRE SIZE	WIRE CRIMP HEIGHT mm [INCH]	WIRE CRIMPER PART NUMBER	STABILIZER CRIMP HEIGHT mm [INCH]	STABILIZER CRIMPER PART NUMBER	CRIMP HEIGHT REFERENCE SETTING
12 AWG	2.16+/-0.05 [.085+/- .002]	7-456408-6	2.79+/-0.05 [.110+/- .002]	815664-2	9.1

TERMINAL DATA: TE TERMINAL		TE CRIMP SPECIFICATION	
TERMINAL NAME: AMP-IN			
WIRE STRIP LENGTH		INSULATION DIAMETER RANGE	
4.83-5.59 mm [.190-.220 IN]		Ø2.29-2.54 mm [.090-.100 IN]	
TERMINAL APPLICATION SPECIFICATION	114-1016	-	-
TERMINALS APPLIED			
TE TERMINAL	TE TERMINAL	TE TERMINAL	TE TERMINAL
3-770060-1			



WIRE SIZE	WIRE CRIMP HEIGHT mm [INCH]	WIRE CRIMPER PART NUMBER	STABILIZER CRIMP HEIGHT mm [INCH]	STABILIZER CRIMPER PART NUMBER	CRIMP HEIGHT REFERENCE SETTING
14 AWG	1.40+/-0.05 [.055+/- .002]	2-456408-5	2.75+/-0.10 [.108+/- .004]	815664-6	7.6
18-16 AWG	1.09+/-0.05 [.043+/- .002]	2-456408-6	2.40+/-0.10 [.094+/- .004]	815664-7	7.8

- RECOMMENDED SPARE PARTS
- GREASE BEARING SURFACES LIGHTLY
- LUBRICATE DAILY PER THE APPLICATOR INSTRUCTION SHEET SUPPLIED WITH THE APPLICATOR.
- APPLICATOR SPECIFIC DATA TO BE ENTERED INTO BLANK MEMORY CHIP AT ASSEMBLY. SEE BELOW FOR PART NUMBER:
 - MECHANICAL FEED WITH "SMART APPLICATOR" CONVERSION: 8-2266225-4
 - PNEUMATIC FEED WITH "SMART APPLICATOR" CONVERSION: 8-2266225-4
 - SERVO FEED WITH "FINE CRIMP HEIGHT ADJUST": 8-2266225-5
 - SERVO FEED WITH "NON-CRIMP HEIGHT ADJUST": 8-2266225-6
- ADJUSTMENT OF THE STRIPPER MAY BE REQUIRED WHEN MOVING THE APPLICATOR BETWEEN BENCH AND LEADMAKER APPLICATIONS.
- APPLY PART NUMBER 1-23419-5 LOCTITE TO THREADS OF ITEMS 62. APPLY PART NUMBER 2-23419-6 LOCTITE TO THREADS OF ITEMS 242. FOR -6 ONLY APPLY PART NUMBER 1-23419-5 LOCTITE TO THREADS OF ITEM 37.

- GREASE THREADS, GROOVE AND O-RING ON ITEMS 35 & 252.
- MAGNET, ITEM 166 MUST BE ORIENTED CORRECTLY IN ORDER TO PROPERLY ACTUATE THE COUNTER.
- CRIMP HEIGHT REFERENCE SETTING WAS THE SETTING USED WHEN THE APPLICATOR WAS QUALIFIED AT THE FACTORY. ADJUSTMENT MAY BE NECESSARY WHEN RUNNING APPLICATOR IN THE FIELD.
- SPARE FEED CAM STORAGE LOCATION REFER TO INSTRUCTION SHEET FOR ADDITIONAL INFORMATION.
- TO CONVERT THE APPLICATOR TO A NON-CARRIER CUTTING STYLE, REMOVE ITEM 13 AND ATTACH TO THE LOCATION ON THE BACK SIDE OF THE HOUSING. REFER TO INSTRUCTION SHEET FOR ADDITIONAL INFORMATION.
- WHEN ASSEMBLING A NON CRIMP HEIGHT ADJUST APPLICATOR (-6) USE SHIMS FROM ITEM 260 TO ACHIEVE A NOMINAL SHIM HEIGHT OF 3.72.
- ITEMS 1 & 178 TO BE USED WITH 12 AWG ONLY. ITEMS TO BE SHIPPED WITH APPLICATOR.
- ITEMS 253 & 254 TO BE USED WITH 14 AWG ONLY. ITEMS TO BE SHIPPED WITH APPLICATOR.
- ITEMS 255 & 256 TO BE USED WITH 18-16 AWG ONLY. APPLICATOR TO BE SET UP WITH THESE ITEMS.
- THIS APPLICATOR APPLIES SCROLL INSULATION CRIMP DUE TO RESTRICTED INSULATION DIAMETER RANGE.

***WARNING**
ON INSTALLATION, SET WIRE DISC, ITEM 40 TO LARGEST WIRE SIZE SETTING. USE OF SETTINGS BELOW MINIMUM REQUIRED CRIMP HEIGHT SETTING WILL CAUSE DAMAGE TO CRIMP TOOLING.

ITEM NO	DESCRIPTION	ITEM NO
260	APPLICATOR SHIM PACK	260
256	CRIMPER, WIRE PREMIUM	256
255	CRIMPER, WIRE-O	255
254	CRIMPER, WIRE PREMIUM	254

ATLANTIC VERSION
Shown on sheets 1 of 4 & 2 of 4
(Pacific version shown on sheets 3 of 4 & 4 of 4)

SET UP GAUGE	LOC	DIST	REVISIONS					
2119599-1	A	66	P	LTN	DESCRIPTION	DATE	OWN	APVD
			A		RELEASED	13MAR2013	LG	TE
			B		ECR-16-011438	09AUG2016	KH	LZ

ITEM NO	DESCRIPTION	ITEM NO
253	CRIMPER, WIRE-O	253
252	O-RING, .676 ID, .070 DIA. MAT.	252
250	PUSH ROD, AIR FEED	250
249	BUSHING, LCH5-12, MISUMI	249
248	FEED CAM, AIR FEED	248
247	DETENT PIN	247
246	SPRING, COMPRESSION	246
245	RAM, AMP STYLE, SIDE FEED, NON-ADJ.	245
244	CAM, SNAIL, INSULATION ADJUSTMENT	244
243	WASHER, WAVE SPRING, CREST-TO-CREST	243
242	RETAINER, INSULATION DIAL	242
241	SCR, SKT HD CAP M3 X 4.0	241
240	SHCS, LOW HEAD, RoHS, M5 X 16	240
239	MECHANICAL FEED ASSEMBLY	239
238	AIR FEED MODULE	238
213	TAG, IDENTIFICATION	213
198	SPACER, FEEDER	198
178	CRIMPER, WIRE PREMIUM	178
172	RING, RETAIN, EXTERN, 3/16 CRESCENT	172
166	MAGNET, RARE EARTH HIGH ENERGY	166
164	COUNTER, MAGNETIC	164
163	SPRING, FEED FINGER	163
137	PIN, RETAIN, GRVD, 3/16 X .854	137
136	HOLDER, FEED FINGER, AF	136
135	MEMORY CHIP, PROGRAMMED	135
133	SERVO FEED LATCH ASM	133
119	WASHER, FLAT, REG M4	119
117	FEED FINGER ASSEMBLY, SF	117
82	SPACER, CRIMPER	82
71	DOCUMENTATION PACKAGE	71
70	DEPRESSOR, WIRE	70
67	TAG, IDENTIFICATION	67
66	SCREW, DRIVE, RH, RoHS, 2 x .188	66
63	LIMITER, ADJUSTMENT BOLT	63
62	SCR, SET, SOC, CONE POINT, M3 X 4.0	62
60	SCR, BHSC, RoHS (M4 X 8)	60
59	SCR, HEX HD CAP, M4 X 6.0	59
56	PAWL, FEED	56
54	SHCS, LOW HEAD, RoHS, M4 X 12	54
49	SCR, SKT HD CAP M4 X 6.0	49
48	FEED CAM, PRE FEED	48
47	FEED CAM, POST FEED	47
46	APPLICATOR BASIC ASSEMBLY, SF	46
44	RAM, AMP STYLE, SIDE FEED	44
41	SCR, BHSC, RoHS (M8 X 25)	41
40	DISC, NUMBERED FA WIRE ADJUSTMENT	40
39	APPLICATOR SHIM PACK	39
38	RAM WASHER, PRECISION	38
37	FA HEAD, ATLANTIC STYLE	37
35	BOLT, ADJUSTMENT	35
34	STOP, WIRE	34
33	SCR, BHSC, RoHS (M4 X 20)	33
32	HEX HEAD, FLANGED, M5 X 8mm LONG	32
30	SPACER, STRIP GUIDE	30
29	ASSEMBLY, STRIP GUIDE	29
28	SPACER, CRIMPER	28
24	STRIP GUIDE	24
21	SCR, SKT HD CAP, RoHS, M4 X 8.0	21
20	WASHER, FLAT, REG M4	20
19	STRIPPER, SIDE FEED	19
13	INSERT, SHEAR	13
12	SPRING, COMPRESSION	12
11	STOP, SHEAR	11
10	SHEAR HOLDER, FRONT	10
9	FLOATING SHEAR, FRONT	9
8	ANVIL, COMBINATION	8
7	-	7
6	-	6
5	DEPRESSOR, SHEAR	5
4	BLOCK, CRIMPER SPACER	4
3	CRIMPER, INSULATION, SCROLL	3
2	SPACER, CRIMPER	2
1	CRIMPER, WIRE-O	1

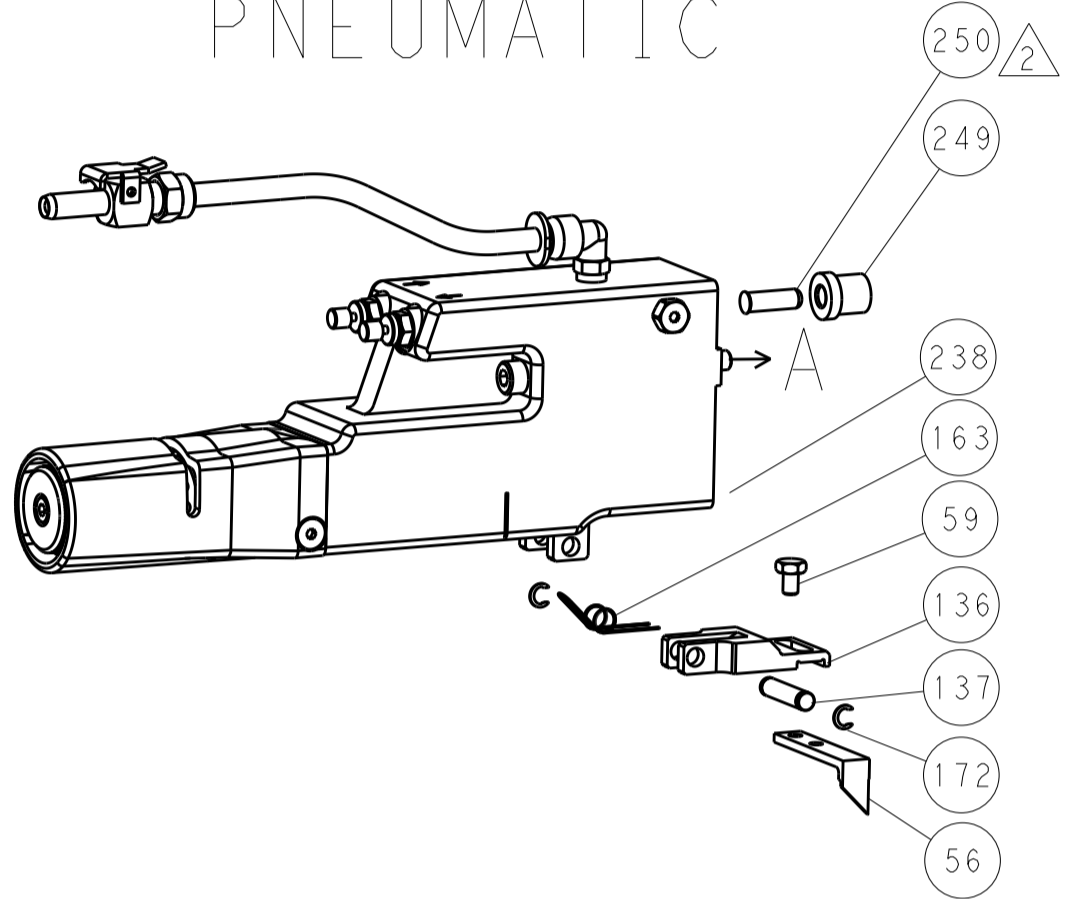
DIMENSIONS:		TOLERANCES UNLESS OTHERWISE SPECIFIED:		MATERIAL:		FINISH:	
mm	0 PLC	±					
	1 PLC	±					
	2 PLC	±					
	3 PLC	±					
	4 PLC	±					
	ANGLES	±					

LOC		DIST		REVISIONS			
A	66	P	LTM	DESCRIPTION	DATE	OWN	APVD
		-	-	SEE SHEET 1	-	-	-

FEED TYPE MECHANICAL



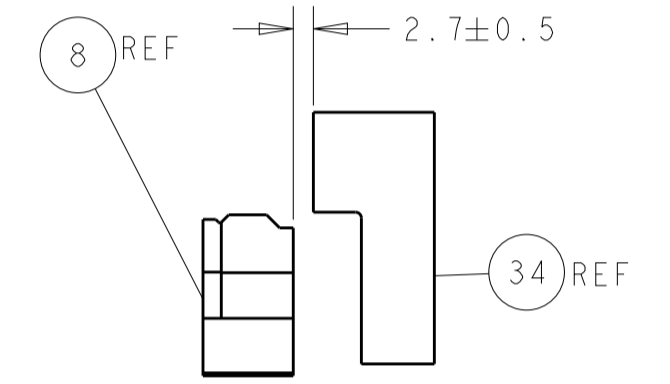
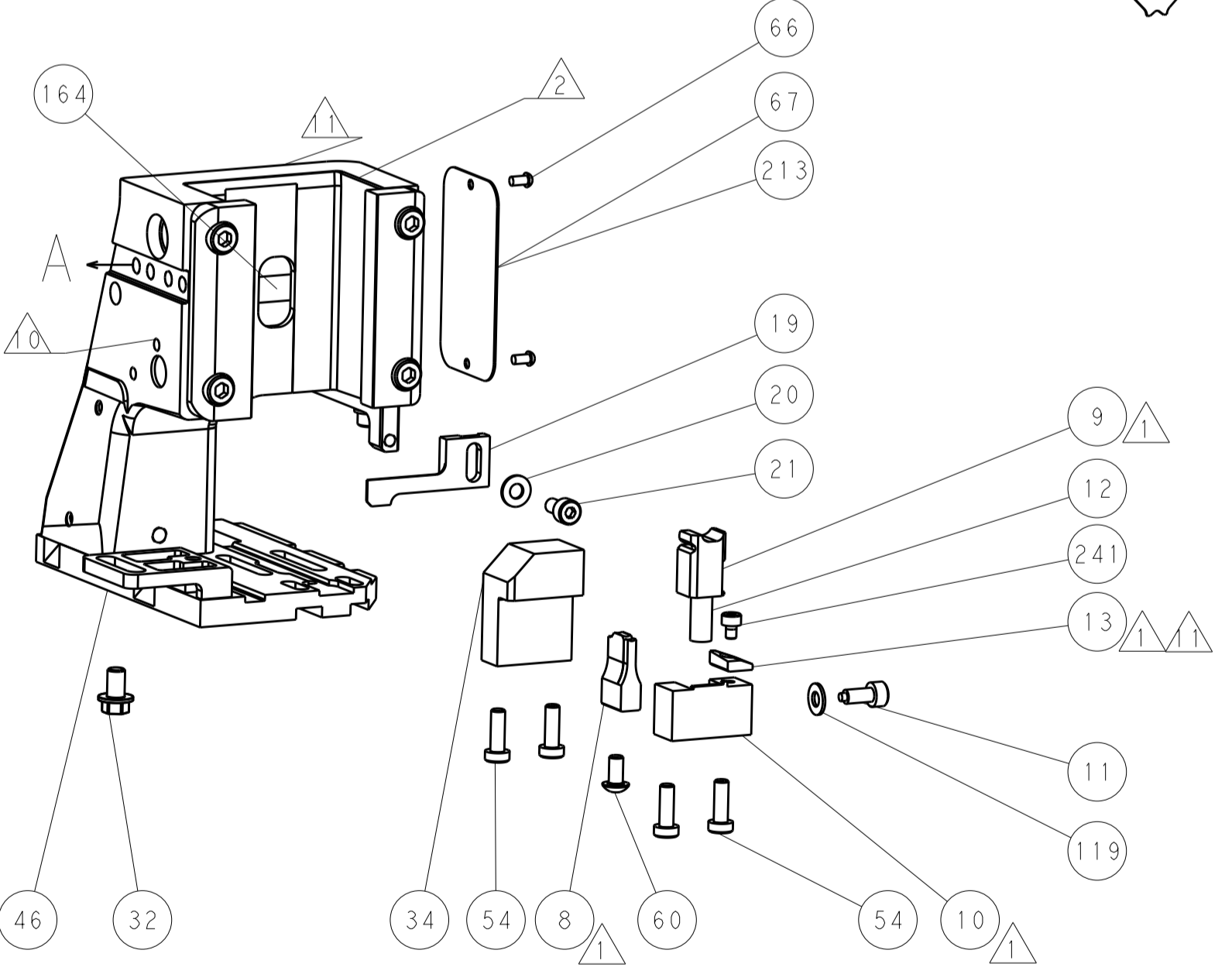
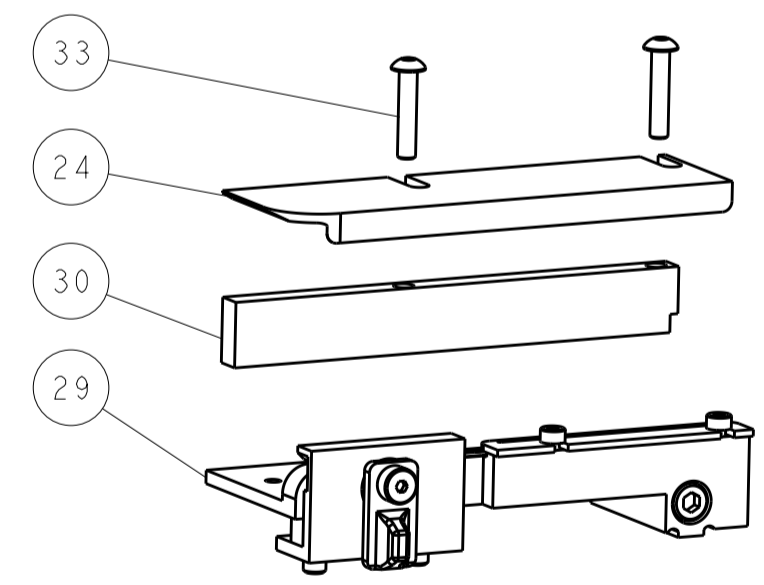
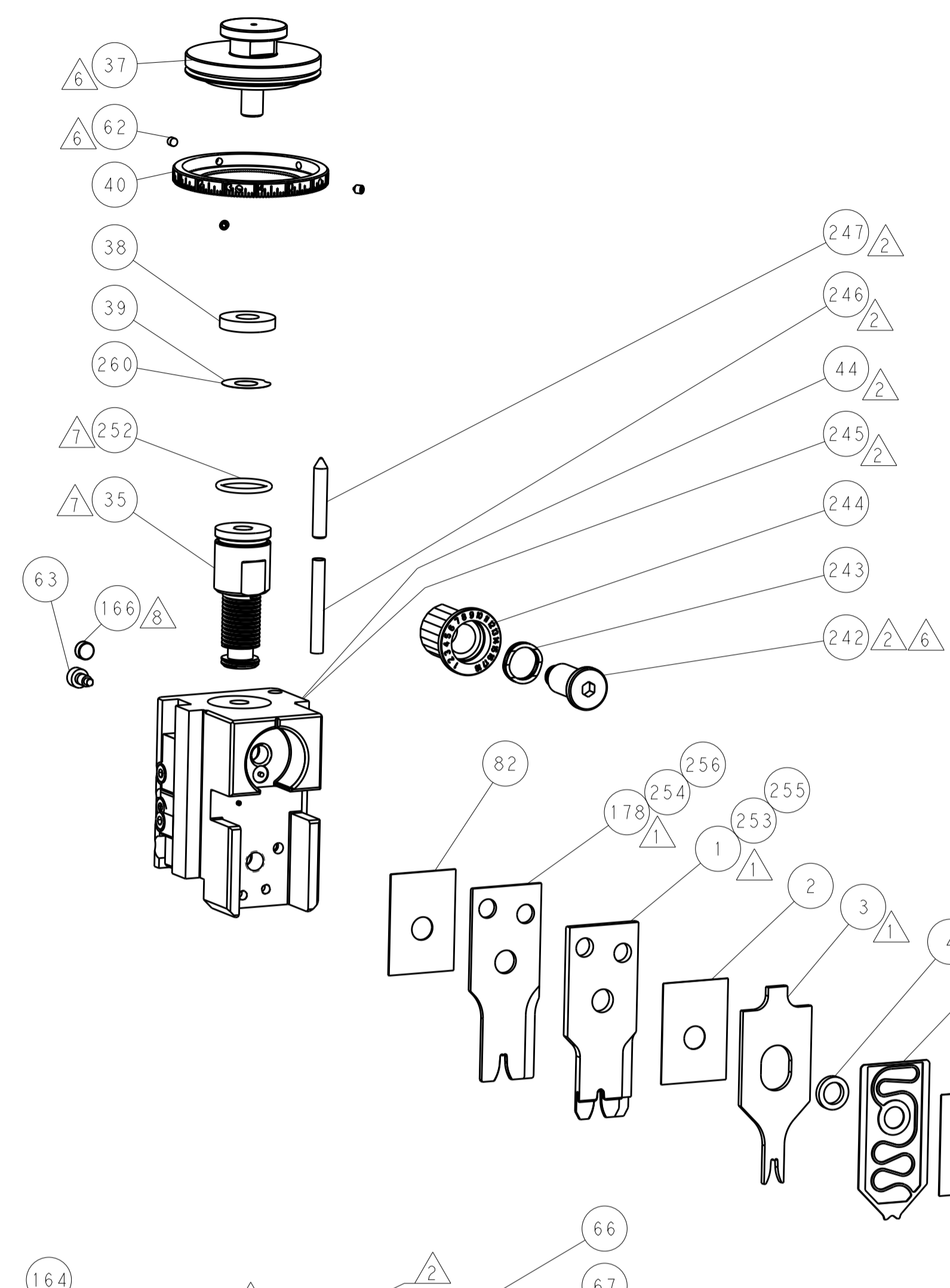
PNEUMATIC



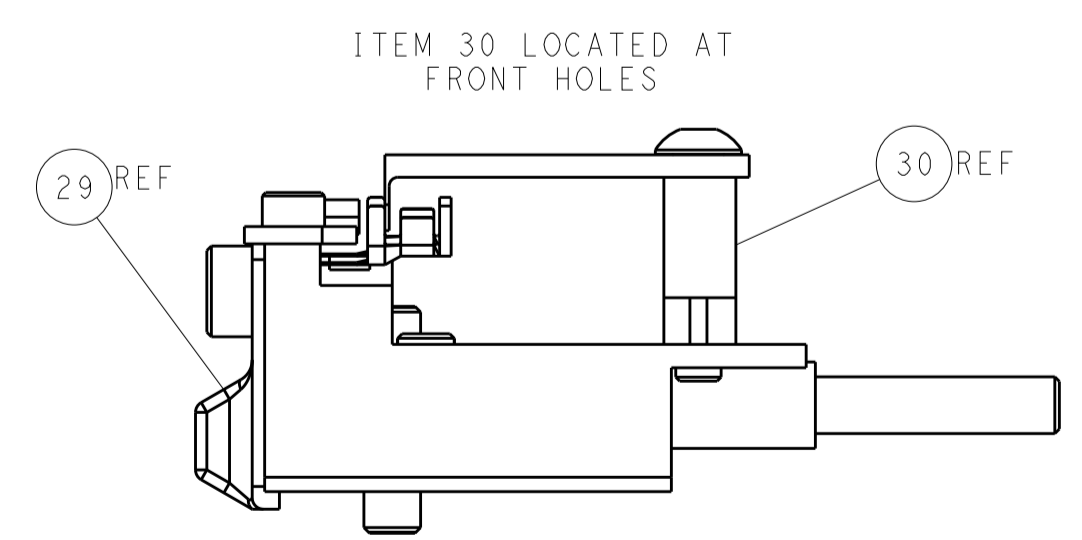
SERVO LATCH PLATE



CAM POSITIONS



TERMINAL SUPPORT LOCATION



FEED TRACK POSITION GUIDE BY INSULATION BARREL

ATLANTIC VERSION
 Shown on sheets 1 of 4 & 2 of 4
 (Pacific version shown on sheets 3 of 4 & 4 of 4)

DIMENSIONS:		TOLERANCES UNLESS OTHERWISE SPECIFIED:		DWN L. GROSS 19FEB2014		TE Connectivity	
mm	0 PLC	±		CHK T. ELBIN 19FEB2014	Harrisburg, PA 17105-3608		
	2 PLC	±		APVD M. CLIFFORD 19FEB2014	NAME Ocean Side Feed		
	3 PLC	±		PRODUCT SPEC	Applicator		
	4 PLC	±		APPLICATION SPEC	SIZE CAGE CODE DRAWING NO RESTRICTED TO		
	ANGLES	±		WEIGHT	A1 00779 ©=2266225		
MATERIAL	FINISH			Customer Accessible Production Drawing	SCALE 1:2	SHEET 2 of 4	REV B

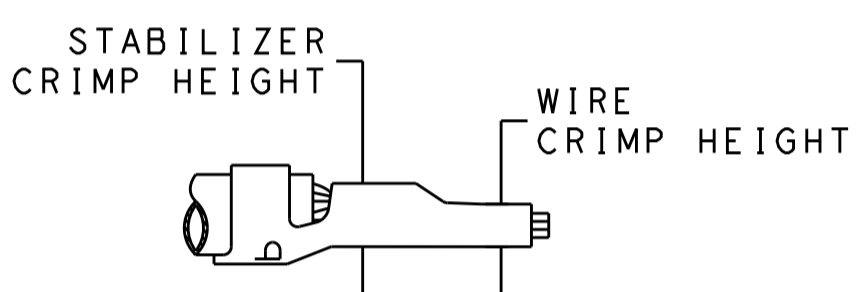
PACIFIC VERSION TERMINATOR INTERFACE ADAPTER	PART NUMBER	REVISION	DESCRIPTION	FEED TYPE	APPLICATOR STYLE CONVERSION CHART						
					CONVERT TO	PART NUMBERS REQUIRED					
						PNEUMATIC FEED	2119950-1	1338685-1	5-18022-5	2119641-2	2119799-1
	2-2266225-1	B	FINE CRIMP HEIGHT ADJUST	MECHANICAL	SERVO LATCH PLATE	2119951-1	-	8-2266225-5	1901094-3	2-1752354-6	2168400-6 (QUANTITY 2)
					SMART APPLICATOR	2161326-1	-	8-2266225-4	-	-	-
	2-2266225-2	B	FINE CRIMP HEIGHT ADJUST	PNEUMATIC	MECHANICAL FEED	2119949-1	1338685-1	5-18022-5	2119653-2	-	-
					SERVO LATCH PLATE	2119951-1	-	8-2266225-5	1901094-3	2-1752354-6	2168400-6 (QUANTITY 2)
	2-2266225-5	B	FINE CRIMP HEIGHT ADJUST	SERVO LATCH PLATE	SMART APPLICATOR	2161326-1	-	8-2266225-4	-	-	-
					MECHANICAL FEED	2119949-1	1338685-1	5-18022-5	2119653-2	-	-
	2-2266225-7	B	FINE CRIMP HEIGHT ADJUST	NONE	-	-	-	-	-	-	-
	7-2266225-*	-	SEE CRIMP TOLING KITS BELOW	-	-	-	-	-	-	-	-

SET UP GAUGE	LOC	DIST	REVISIONS			
2119599-1	A	66	REV	DATE	BY	APPV
			-	SEE SHEET 1	-	-

APPLICATOR DATA		
CRIMP	SIZE	TYPE
WIRE	2.79 mm [.110]	F
STABILIZER	2.79 mm [.110]	O
INSULATION	2.79 mm [.110]	SC

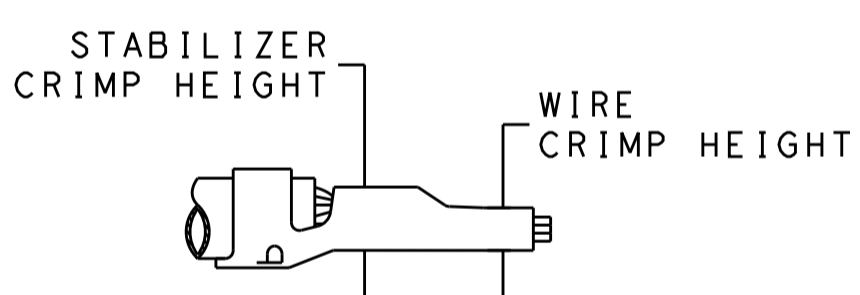
PART NO	REV	WIRE SIZE	WIRE CRIMPER	STABILIZER CRIMPER	INSULATION CRIMPER	ANVIL
7-2266225-7	B	12 AWG	7-456408-6	815664-2	1803146-3	1-1633923-1
7-2266225-8	B	14 AWG	2-456408-5	815664-6	1803146-3	1-1633923-1
7-2266225-9	B	18-16 AWG	2-456408-6	815664-7	1803146-3	1-1633923-1

TERMINAL DATA: TE TERMINAL		TE CRIMP SPECIFICATION	
TERMINAL NAME: AMP-IN			
WIRE STRIP LENGTH		INSULATION DIAMETER RANGE	
4.83-5.59 mm [.190-.220 IN]		Ø2.29-2.54 mm [.090-.100 IN]	
TERMINAL APPLICATION SPECIFICATION	114-1016		
TERMINALS APPLIED			
TE TERMINAL	TE TERMINAL	TE TERMINAL	TE TERMINAL
3-794013-1			



WIRE SIZE	CRIMP HEIGHT mm [INCH]	WIRE CRIMPER PART NUMBER	STABILIZER CRIMP HEIGHT mm [INCH]	STABILIZER CRIMPER PART NUMBER	CRIMP HEIGHT REFERENCE SETTING
12 AWG	2.16+/-0.05 [.085+/-0.002]	7-456408-6	2.79+/-0.05 [.110+/-0.002]	815664-2	9.1

TERMINAL DATA: TE TERMINAL		TE CRIMP SPECIFICATION	
TERMINAL NAME: AMP-IN			
WIRE STRIP LENGTH		INSULATION DIAMETER RANGE	
4.83-5.59 mm [.190-.220 IN]		Ø2.29-2.54 mm [.090-.100 IN]	
TERMINAL APPLICATION SPECIFICATION	114-1016		
TERMINALS APPLIED			
TE TERMINAL	TE TERMINAL	TE TERMINAL	TE TERMINAL
3-770060-1			



WIRE SIZE	CRIMP HEIGHT mm [INCH]	WIRE CRIMPER PART NUMBER	STABILIZER CRIMP HEIGHT mm [INCH]	STABILIZER CRIMPER PART NUMBER	CRIMP HEIGHT REFERENCE SETTING
14 AWG	1.40+/-0.05 [.055+/-0.002]	2-456408-5	2.75+/-0.10 [.108+/-0.004]	815664-6	7.6
18-16 AWG	1.09+/-0.05 [.043+/-0.002]	2-456408-6	2.40+/-0.10 [.094+/-0.004]	815664-7	7.8

- ⚠ MAGNET MUST BE ORIENTED CORRECTLY IN ORDER TO PROPERLY ACTUATE THE COUNTER.
- ⚠ CRIMP HEIGHT REFERENCE SETTING WAS THE SETTING USED WHEN THE APPLICATOR WAS QUALIFIED AT THE FACTORY. ADJUSTMENT MAY BE NECESSARY WHEN RUNNING APPLICATOR IN THE FIELD.
- ⚠ SPARE FEED CAM STORAGE LOCATION REFER TO INSTRUCTION SHEET FOR ADDITIONAL INFORMATION.
- ⚠ TO CONVERT THE APPLICATOR TO A NON-CARRIER CUTTING STYLE, REMOVE ITEM 13 AND ATTACH TO THE LOCATION ON BACK SIDE OF THE HOUSING. REFER TO INSTRUCTION SHEET FOR ADDITIONAL INFORMATION.
- ⚠ ITEMS 1 & 178 TO BE USED WITH 12 AWG ONLY. ITEMS TO BE SHIPPED WITH APPLICATOR.
- ⚠ ITEMS 253 & 254 TO BE USED WITH 14 AWG ONLY. ITEMS TO BE SHIPPED WITH APPLICATOR.
- ⚠ ITEMS 255 & 256 TO BE USED WITH 18-16 AWG ONLY. APPLICATOR TO BE SET UP WITH THESE ITEMS.
- ⚠ THIS APPLICATOR APPLIES SCROLL INSULATION CRIMP DUE TO RESTRICTED INSULATION DIAMETER RANGE.

***WARNING**
 ON INSTALLATION, SET WIRE DISC, ITEM 40 TO LARGEST WIRE SIZE SETTING. USE OF SETTINGS BELOW MINIMUM REQUIRED CRIMP HEIGHT SETTING WILL CAUSE DAMAGE TO CRIMP TOOLING.

1	-	-	1	1	1	1	1	2-456408-6	CRIMPER, WIRE PREMIUM	256
-79	-78	-77	-27	-25	-22	-21	PART NO	DESCRIPTION	ITEM NO	

PACIFIC VERSION
 Shown on sheets 3 of 4 & 4 of 4
 (Atlantic version shown on sheets 1 of 4 & 2 of 4)

1	-	-	1	1	1	1	1	815664-7	CRIMPER, WIRE-O	255
-	-	-	1	1	1	1	1	2-456408-5	CRIMPER, WIRE PREMIUM	254
-	-	-	1	1	1	1	1	815664-6	CRIMPER, WIRE-O	253
-	-	-	1	1	1	1	1	2119782-1	FINE ADJUST HEAD ASM, PACIFIC STYLE	251
-	-	-	-	-	-	-	-	2119640-1	PUSH ROD, AIR FEED	250
-	-	-	-	-	-	-	-	2079988-1	BUSHING, LCH5-12, MISUMI	249
-	-	-	1	1	1	1	1	1-22279-3	SPRING, COMPRESSION	246
-	-	-	1	1	1	1	1	2119082-6	CAM, SNAIL, INSULATION ADJUSTMENT	244
-	-	-	1	1	1	1	1	2079764-1	WASHER, WAVE SPRING, CREST-TO-CREST	243
-	-	-	1	1	1	1	1	2119083-1	RETAINER, INSULATION DIAL	242
-	-	-	1	1	1	1	1	7-18023-7	SCR, SKT HD CAP M3 X 4.0	241
-	-	-	-	-	-	-	-	2168400-6	SHCS, LOW HEAD, RoHS, M5 X 16	240
-	-	-	-	-	-	-	-	2119580-1	MECHANICAL FEED ASSEMBLY	239
-	-	-	-	-	-	-	-	2063440-1	AIR FEED MODULE	238
-	-	-	-	-	-	-	-	2119740-2	TAG, IDENTIFICATION	213
-	-	-	-	-	-	-	-	1901094-3	SPACER, FEEDER	198
-	-	-	1	1	1	1	1	7-456408-6	CRIMPER, WIRE PREMIUM	178
-	-	-	-	-	-	-	-	21045-3	RING, RETAIN, EXTERN, 3/16 CRESCENT	172
-	-	-	-	-	-	-	-	994969-1	MAGNET, RARE EARTH HIGH ENERGY	166
-	-	-	REF	REF	REF	REF	REF	994970-2	COUNTER, MAGNETIC	164
-	-	-	-	-	-	-	-	240638-1	SPRING, FEED FINGER	163
-	-	-	1	1	1	1	1	8-21084-1	O-RING, .801 ID, .070 DIA. MAT.	152
-	-	-	-	-	-	-	-	2119641-2	FEED CAM, AIR FEED	151
-	-	-	1	1	1	1	1	2119798-2	DETENT PIN	145
-	-	-	1	1	1	1	1	2079383-8	SCR, BHSC, RoHS (M4 X 16)	144
-	-	-	4	4	4	4	4	2168400-5	SHCS, LOW HEAD, RoHS, M4 X 20	143
-	-	-	-	-	-	-	-	2119653-2	FEED CAM, POST FEED	142
-	-	-	1	1	1	1	1	1-2119656-0	APPLICATOR BASIC ASSEMBLY, SF	141
-	-	-	1	1	1	1	1	2119650-1	RAM, ASIAN STYLE, SIDE FEED	140
-	-	-	1	1	1	1	1	2119092-2	BOLT, ADJUSTMENT	139
-	-	-	-	-	-	-	-	3-23627-7	PIN, RETAIN, GRVD, 3/16 X .854	137
-	-	-	-	-	-	-	-	2119799-1	HOLDER, FEED FINGER, AF	136
-	-	-	REF	REF	REF	REF	REF	SEE NOTE 4	MEMORY CHIP, PROGRAMMED	135
-	-	-	-	-	-	-	-	1633743-1	SERVO FEED LATCH ASM	133
-	-	-	1	1	1	1	1	1-18028-2	WASHER, FLAT, REG M4	119
-	-	-	REF	REF	REF	REF	REF	2119944-1	FEED FINGER ASSEMBLY, SF	117
-	-	-	1	1	1	1	1	455888-5	SPACER, CRIMPER	82
-	-	-	1	1	1	1	1	2119956-1	DOCUMENTATION PACKAGE	71
-	-	-	1	1	1	1	1	2119791-9	DEPRESSOR, WIRE	70
-	-	-	1	-	-	-	-	2119740-1	TAG, IDENTIFICATION	67
-	-	-	2	2	2	2	2	2168078-1	SCREW, DRIVE, RH, RoHS, 2 x .188	66
-	-	-	1	1	1	1	1	2119793-1	LIMITER, ADJUSTMENT BOLT	63
-	-	-	3	3	3	3	3	992763-5	SCR, SET, SOC, CONE POINT, M3 x 4.0	62
-	-	-	-	-	-	-	-	5-18022-5	SCR, HEX HD CAP, M4 X 6.0	59
-	-	-	-	-	-	-	-	1338685-1	PAWL, FEED	56
-	-	-	-	-	-	-	-	18023-9	SCR, SKT HD CAP M4 X 6.0	49
-	-	-	-	-	-	-	-	2119652-1	FEED CAM, PRE FEED	48
-	-	-	1	1	1	1	1	2079383-7	SCR, BHSC, RoHS (M8 X 25)	41
-	-	-	1	1	1	1	1	2119645-1	DISC, NUMBERED FA WIRE ADJUSTMENT	40
-	-	-	1	1	1	1	1	2119957-1	APPLICATOR SHIM PACK	39
-	-	-	1	1	1	1	1	2119644-5	RAM WASHER, PRECISION	38
-	-	-	1	1	1	1	1	469465-4	STOP, WIRE	34
-	-	-	2	2	2	2	2	2079383-5	SCR, BHSC, RoHS (M4 X 20)	33
-	-	-	1	1	1	1	1	2161328-1	HEX HEAD, FLANGED, M5 x 8mm LONG	32
-	-	-	1	1	1	1	1	1-1320908-0	SPACER, STRIP GUIDE	30
-	-	-	1	1	1	1	1	2119959-1	ASSEMBLY, STRIP GUIDE	29
-	-	-	1	1	1	1	1	455888-3	SPACER, CRIMPER	28
-	-	-	1	1	1	1	1	1320928-2	STRIP GUIDE	24
-	-	-	1	1	1	1	1	2168083-2	SCR, SKT HD CAP, RoHS, M4 X 8.0	21
-	-	-	1	1	1	1	1	1-18028-2	WASHER, FLAT, REG M4	20
-	-	-	1	1	1	1	1	2119533-3	STRIPPER, SIDE FEED	19
-	-	-	1	1	1	1	1	2119806-1	INSERT, SHEAR	13
-	-	-	1	1	1	1	1	3-22280-3	SPRING, COMPRESSION	12
-	-	-	1	1	1	1	1	1-356885-4	STOP, SHEAR	11
-	-	-	1	1	1	1	1	2119805-1	SHEAR HOLDER, FRONT	10
-	-	-	1	1	1	1	1	462006-6	FLOATING SHEAR, FRONT	9
1	1	1	1	1	1	1	1	1-1633923-1	ANVIL, COMBINATION	8
-	-	-	-	-	-	-	-	-	-	7
-	-	-	-	-	-	-	-	-	-	6
-	-	-	1	1	1	1	1	1-2119757-0	DEPRESSOR, SHEAR	5
-	-	-	1	1	1	1	1	238011-8	BLOCK, CRIMPER SPACER	4
1	1	1	1	1	1	1	1	1803146-3	- CRIMPER, INSULATION, SCROLL	3
-	-	-	1	1	1	1	1	455888-3	SPACER, CRIMPER	2
-	-	-	1	1	1	1	1	815664-2	CRIMPER, WIRE-O	1

- ⚠ RECOMMENDED SPARE PARTS
- ⚠ GREASE BEARING SURFACES LIGHTLY
- 3. LUBRICATE DAILY PER THE APPLICATOR INSTRUCTION SHEET SUPPLIED WITH THE APPLICATOR.
- ⚠ APPLICATOR SPECIFIC DATA TO BE ENTERED INTO BLANK MEMORY CHIP AT ASSEMBLY. SEE BELOW FOR PART NUMBER:
 MECHANICAL FEED WITH "SMART APPLICATOR" CONVERSION: 8-2266225-4
 PNEUMATIC FEED WITH "SMART APPLICATOR" CONVERSION: 8-2266225-4
 SERVO FEED WITH "FINE CRIMP HEIGHT ADJUST": 8-2266225-5
- 5. ADJUSTMENT OF THE STRIPPER MAY BE REQUIRED WHEN MOVING THE APPLICATOR BETWEEN BENCH AND LEADMAKER APPLICATIONS.
- ⚠ APPLY PART NUMBER 1-23419-5 LOCTITE TO THREADS OF ITEMS 62.
- ⚠ APPLY PART NUMBER 2-23419-6 LOCTITE TO THREADS OF ITEMS 242.
- ⚠ GREASE THREADS, GROOVE AND O-RING ON ITEMS 139 & 152.

DIMENSIONS:		TOLERANCES UNLESS OTHERWISE SPECIFIED:		DATE	
mm	0 PLC ±	1 PLC ±	2 PLC ±	19FEB2014	19FEB2014
	3 PLC ±	4 PLC ±	ANGLES ±	FINISH	
MATERIAL					

REV	DATE	BY	APPV	DESCRIPTION
1	19FEB2014	T. ELBIN	M. CLIFFORD	TE Connectivity Harrisburg, PA 17105-3608

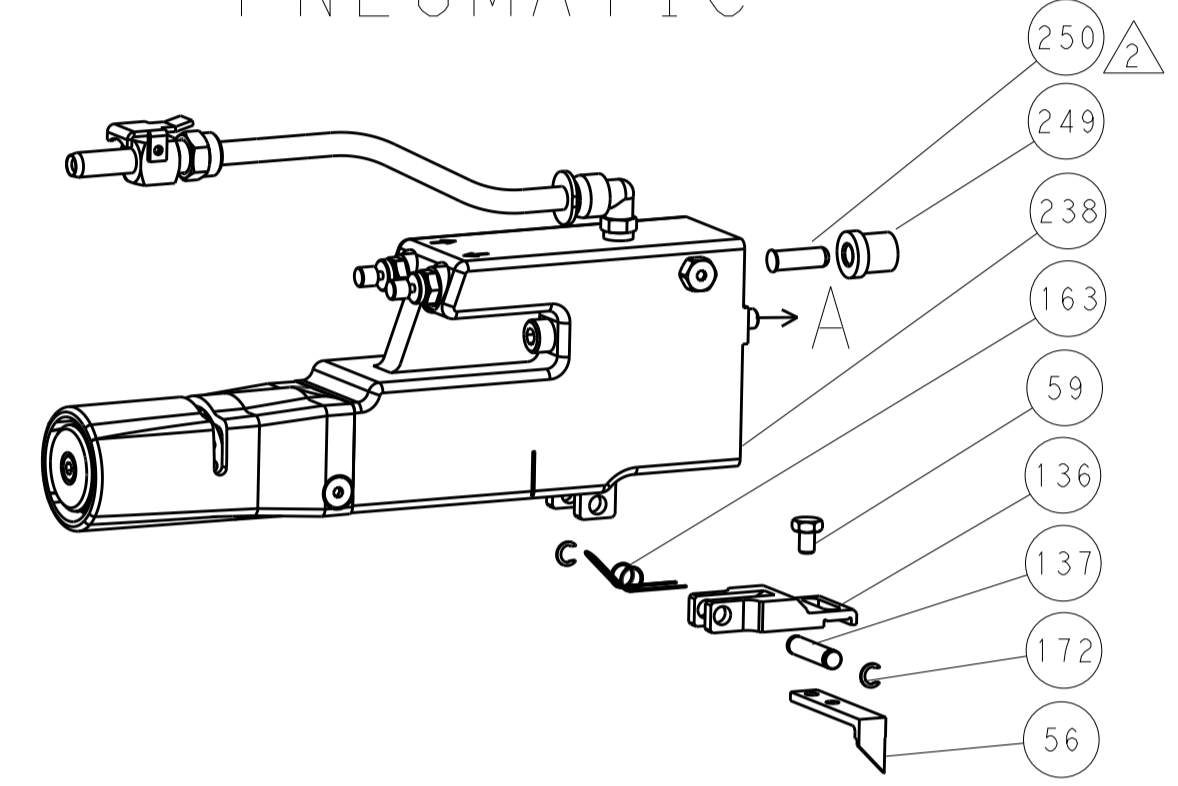
SIZE	CAGE CODE	DRAWING NO	RESTRICTED TO
A1	00779	2266225	B

LOC		DIST		REVISIONS			
A	66	P	LTM	DESCRIPTION	DATE	OWN	APVD
		-	-	SEE SHEET 1			

FEED TYPE MECHANICAL



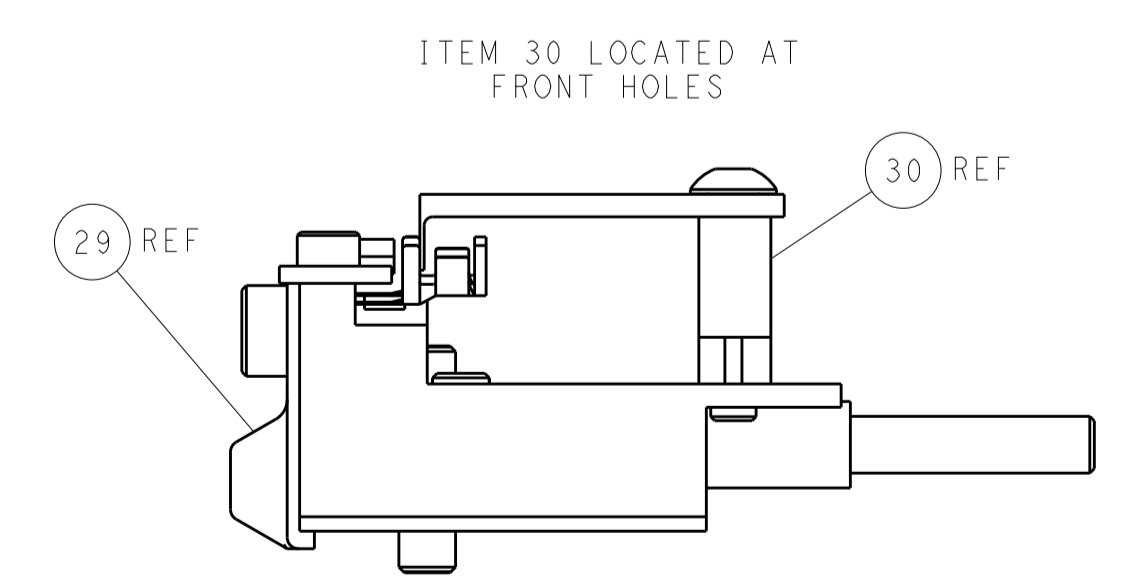
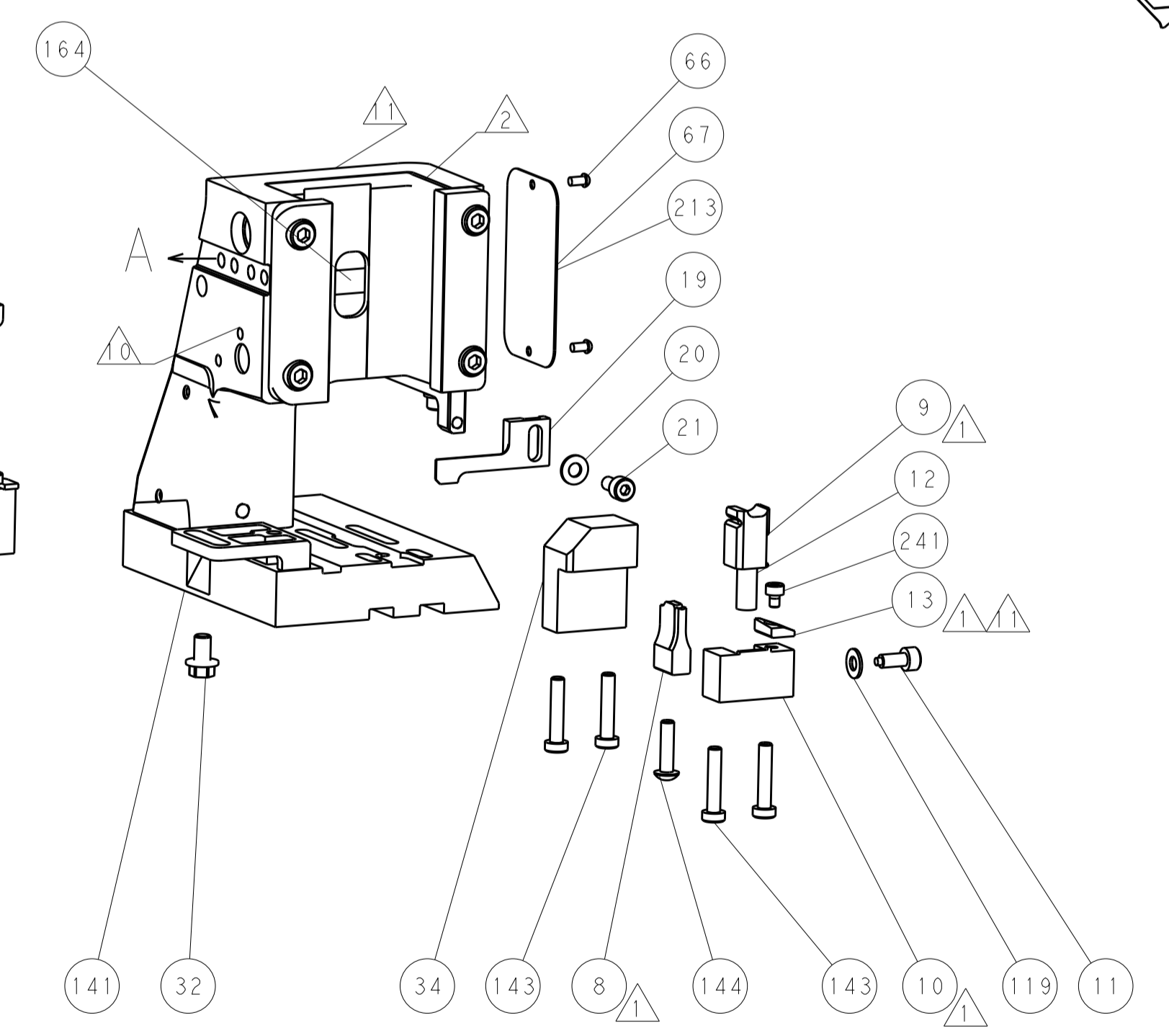
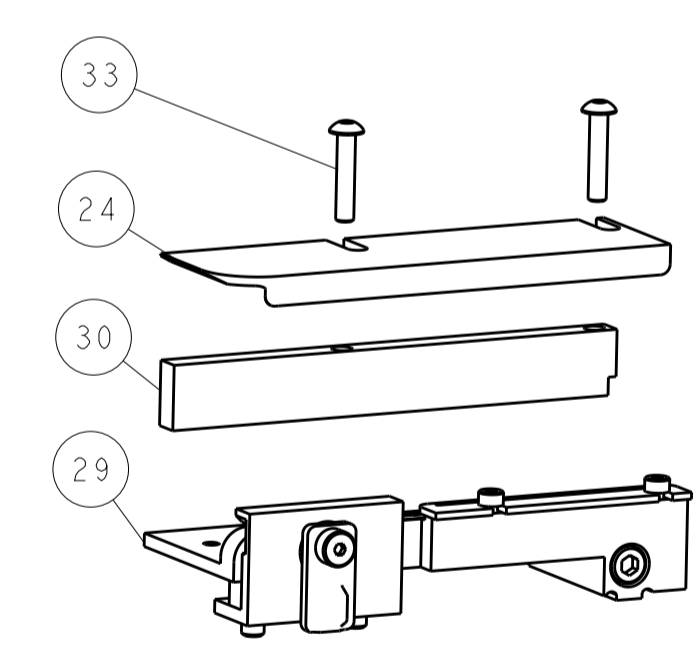
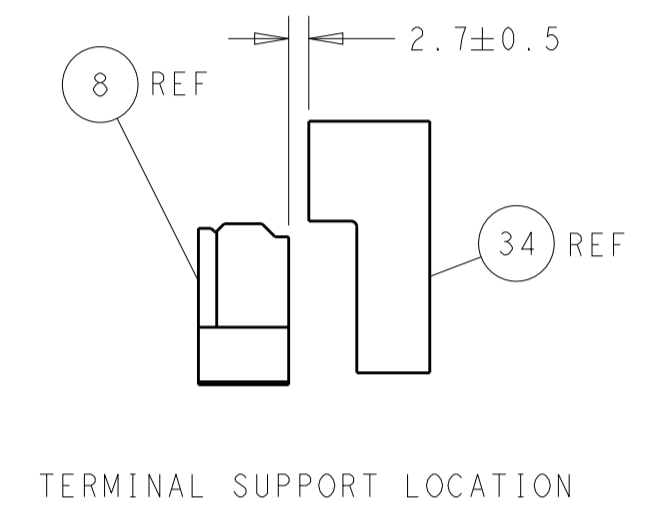
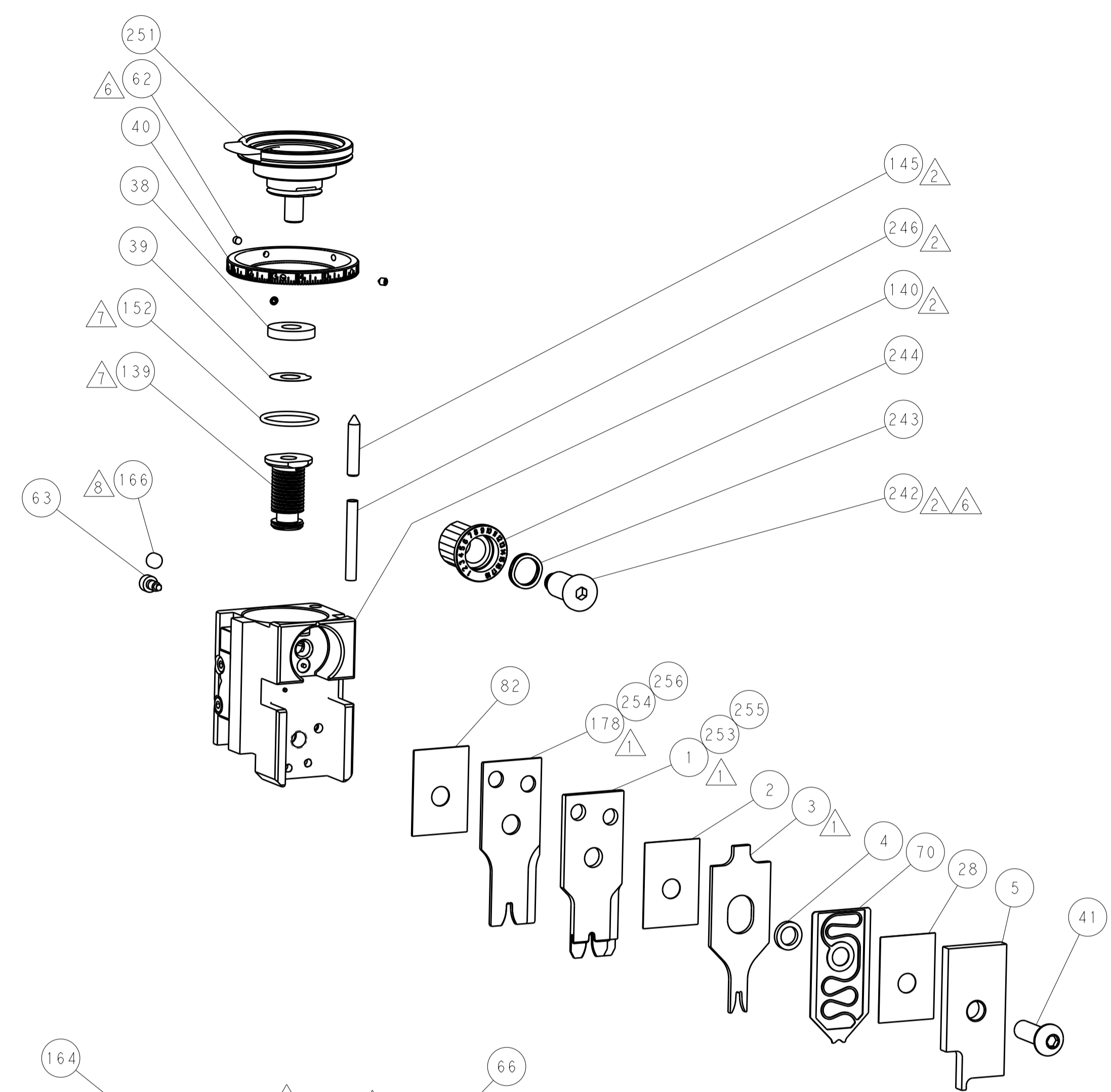
PNEUMATIC



SERVO LATCH PLATE



CAM POSITIONS



PACIFIC VERSION
 Shown on sheets 3 of 4 & 4 of 4
 (Atlantic version shown on sheets 1 of 4 & 2 of 4)

DIMENSIONS:		TOLERANCES UNLESS OTHERWISE SPECIFIED:		DWN: L. GROSS 19FEB2014		REV: T. ELBIN 19FEB2014		NAME: Ocean Side Feed Applicator	
mm	0 PLC ±	1 PLC ±	2 PLC ±	3 PLC ±	4 PLC ±	APVD: M. CLIFFORD 19FEB2014	PRODUCT SPEC:	SIZE: A1	CAGE CODE: 00779
MATERIAL:	FINISH:	WEIGHT:	SCALE: 1:2	SHEET: 4	OF: 4	REV: B	Customer Accessible Production Drawing		