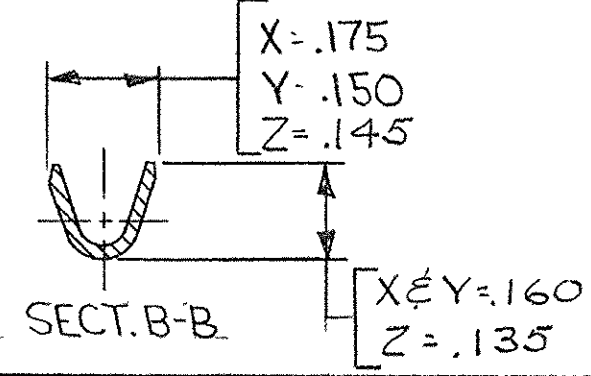
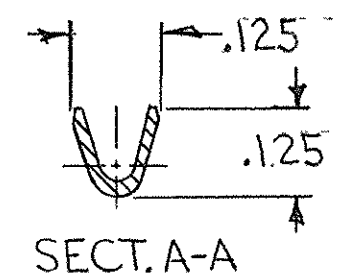
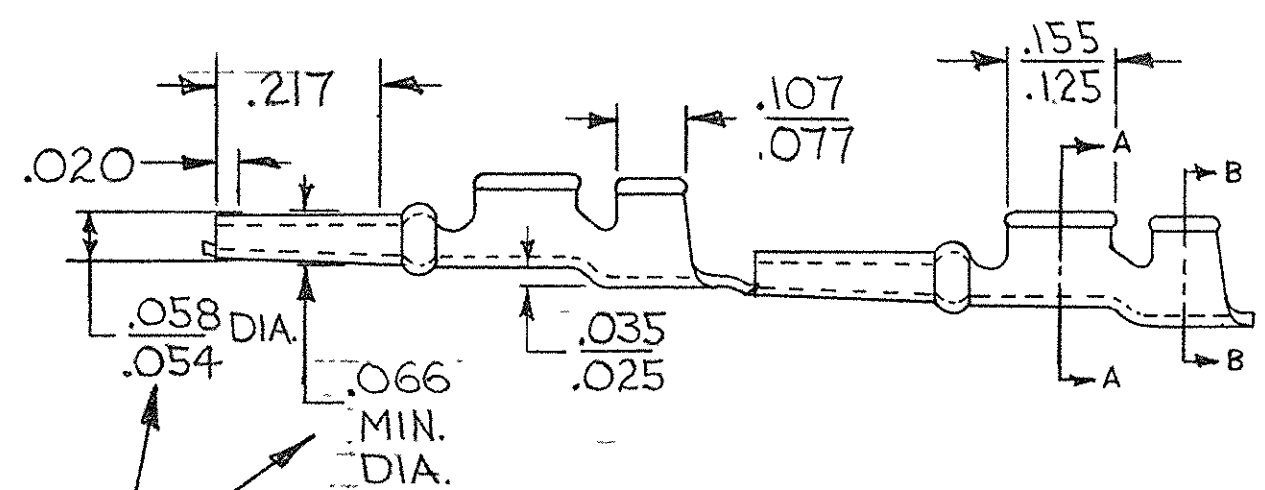
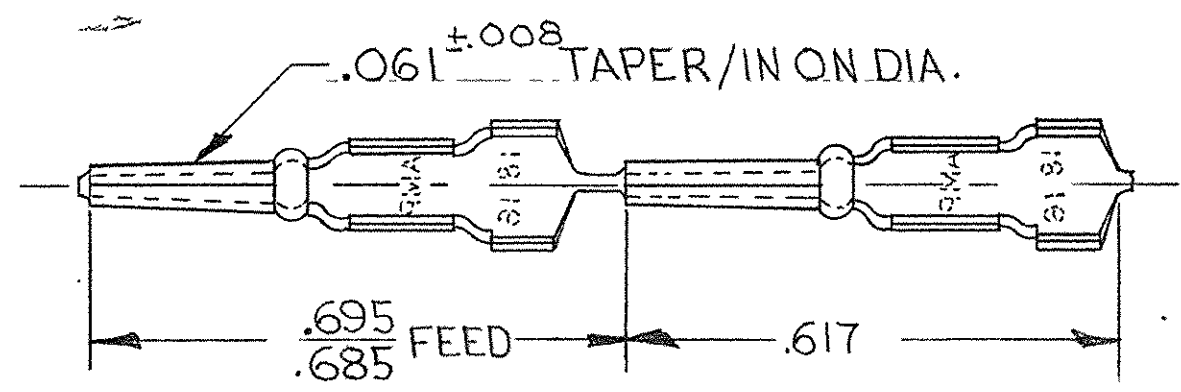


41656
NUMBER

© 1962 BY AMP INCORPORATED. ALL RIGHTS RESERVED. AMP PRODUCTS COVERED BY PATENTS AND/OR PATENTS PENDING. APPROVED PER GOVT CONTRACT NO.

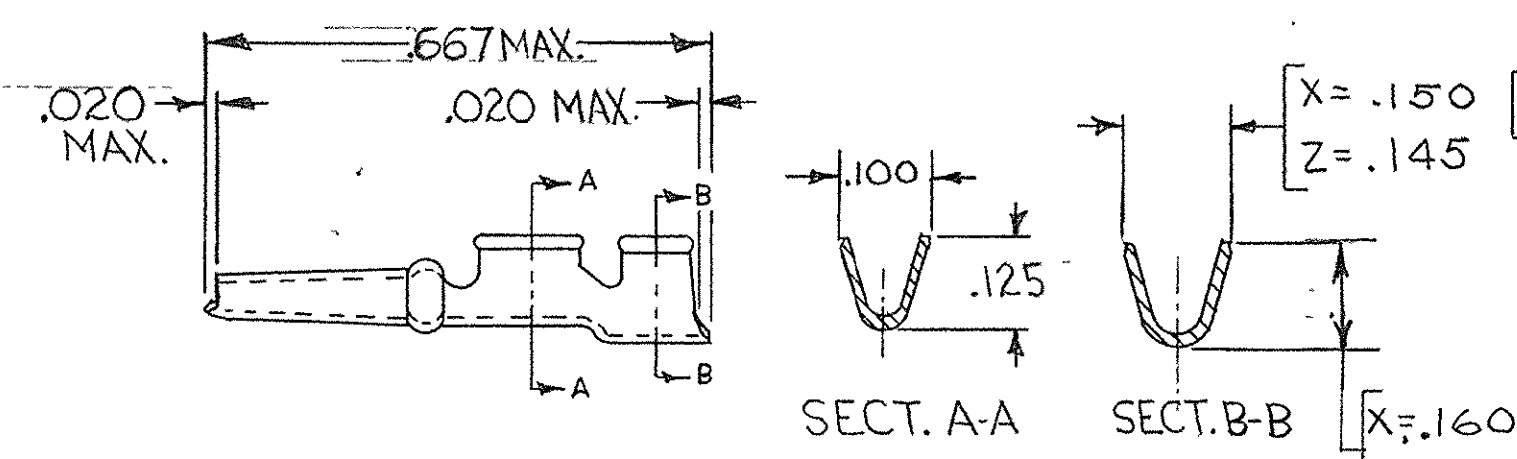
1. PART NO. 66202-1 HAS MILLED SERRATIONS.

| REVISIONS | | | | |
|-----------|------|--|----------|-------------|
| SYM | ZONE | DESCRIPTION | DATE | APPROVAL |
| W | | REVISED & REDRAWN T-781 | 8/9/63 | MAM J.K. |
| Y | | REVISED U-230 | 10-16-63 | M.S. J.K. |
| Z | | REVISED U-411 | 12-5-63 | DR. J.K. |
| AA | | REVISED W-62 | 3-29-65 | M.S. D.S.H. |
| AB | | REVISED 1182 | 1-25-67 | D.R. D.H. |
| AC | | REVISED 1179 | 2-10-67 | M.S. D.H. |
| AD | | OBSOLETE 41223 2102 | 5-12-69 | DR. D.H. |
| AE | | OBS. 60173-4, 42237-2, 60066-4(2102) 2459 | 4-2-70 | M.S. D.H. |
| AF | | OBSOLETE 41865 PER ECN 3343 | 2-4-72 | J.W. D.H. |
| AG | | PRINT DIST WAS "39" LOC WAS "AB" 9347 | 10-7-72 | CO |
| AH | | REVISED HAND TOOL NUMBERS | 5-9-73 | R.C.H. |
| AJ | | OBS. 41675-1, 42237-3, 41658-1, 42774-1, 2, 3-4, 41223-1(60184-1) 1099 | 1-2-79 | D.H. |
| AK | | REVISED PLATING EA 1515 | 8-1-80 | DS |
| AL | | BRIGHT TIN-LEAD WAS BRIGHT TIN EA 1818 | 6-16-81 | DS |
| AM | | UPDATED NAME EA 2071 | 3-82 | DS |
| AN | | REVISED GOLD PLATING EA 2139 | 6-16-82 | DS |
| AP | | OBS 66202-1 & 66203-1 ECN 53379 | 11-19-86 | R.B. |
| AR | | REMOVED 41223 ECN 53859 | 2-26-87 | R.B. |
| AS | | REV PER DF-0357 TS | 4/18/88 | MS |
| AT | | OBS 41674 PER DF-3970 CT | 8-11 | MS |
| AU | | REV PER OH14-0139-05 | 1-25-06 | PY RG |

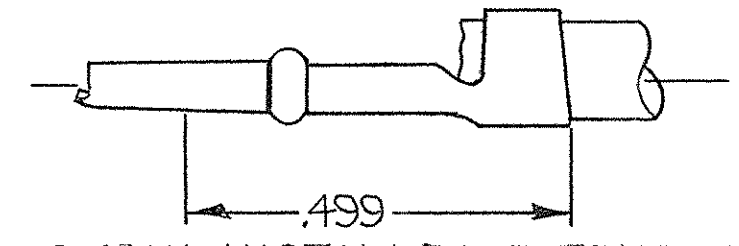
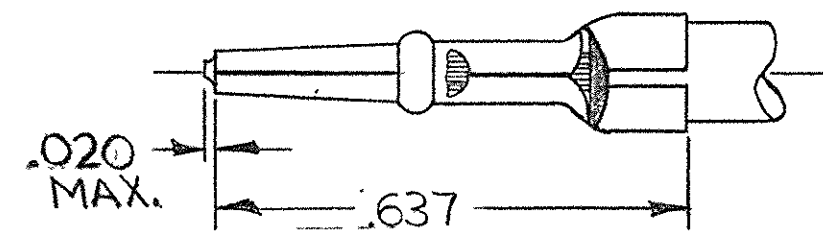


OUT OF ROUND NOT TO EXCEED TOLERANCE ON DIMENSIONS.

STRIP



LOOSE PIECE



MAX. INSTALLED EXTENSION

CRIMPED VERSION

| STRIP NO | LOOSE PIECE No. | WIRE SIZE | INSUL SIZE | INSUL CODE | FINISH | INSERT TOOL | HAND TOOL | C.H. |
|-------------|-----------------|-----------|------------|------------|--------------------------------|-------------|-----------|------|
| 60066-6 | 60173-6 | 18-16 | .070-.100 | Z | .00005 GOLD OVER .00005 NICKEL | 380306-3 | 90198 | .058 |
| 41658-1 | 41675-1 | 18-16 | .100-.140 | X | .00005 GOLD OVER .00005 NICKEL | 380306-3 | 90007 | .058 |
| 60066-5 | 60173-5 | | .070-.100 | Z | PLAIN | | 90198 | |
| 60066-4 | 60173-4 | | | Z | .0001 GOLD OVER .0001 SILVER | | | |
| 60066-3 | 60173-3 | | | Z | .00003 GOLD OVER .00005 NICKEL | | 90198 | |
| 60066-2 | 60173-2 | | | Z | .0002 SILVER | | 90198 | |
| 60066-1 | 60173-1 | | .070-100 | Z | .0001 BRIGHT TIN-LEAD | | 90198 | |
| OBS 66202-1 | 66203-1 | | .100-.140 | X | .0001 BRIGHT TIN-LEAD | | 90007 | |
| 42774-4 | # | | | Y | PLAIN | | 47044 | |
| | 42237-2 | | | X | PLAIN | | | |
| 60184-1 | 42237-3 | | | X | .0002 GOLD OVER .00005 NICKEL | | 90007 | |
| 42774-3 | # | | | Y | .00003 GOLD OVER .00005 NICKEL | | 47044 | |
| 42774-2 | # | | | Y | .0002 SILVER | | 47044 | |
| 42774-1 | # | | | Y | .0001 BRIGHT TIN-LEAD | | 47044 | |
| 41865 | 42237-1 | | | X | .0001 GOLD OVER .0001 SILVER | | | |
| 41658 | 41675 | | | X | .00003 GOLD OVER .00005 NICKEL | | 90007 | |
| 41657 | 41674 | | | X | .0002 SILVER | | 90007 | |
| 5-41656-0 | | 18-16 | .100-.140 | X | .0001 MATTE TIN | 380306-3 | 90007 | .058 |
| 41656 | 41673 | 18-16 | .100-.140 | X | .0001 BRIGHT TIN-LEAD | 380306-3 | 90007 | .058 |

| AMP INFO | QTY REQD | NOMENCLATURE OR DESCRIPTION | PART OR IDENTIFYING NO |
|---|----------|-----------------------------|------------------------|
| LOC: DF | | | |
| LIST OF MATERIALS OR PARTS LIST | | | |
| UNLESS OTHERWISE SPECIFIED DIMENSIONS ARE IN INCHES TOLERANCES ON FRACTIONS DECIMALS ANGLES ± # ±.010 ± # | | SIGNATURE | DATE |
| MATERIAL: .0160 COML. BRASS | | DR: M.A. Mahly | 8/9/63 |
| HEAT TREAT: # | | CHK: J. Kaufman | 8/19/63 |
| FINISH: SEE TABLE | | DSGN ENGR: K. Kallweit | 8/14/63 |
| | | APPD: J. W. D. H. | 8/14/63 |
| | | DSGN APPD: | |
| | | OTHER APPD: | |
| | | CODE IDENT NO: 00779 | SIZE: C |
| | | NUMBER: 41656 | |
| | | SCALE: 4-1 | WT CALC ACTUAL SHEET |

AMP INCORPORATED HARRISBURG, PENNSYLVANIA

PIN, TAPER, INSULATION SUPPORT, "53" SERIES

CUSTOMER DRAWING 1