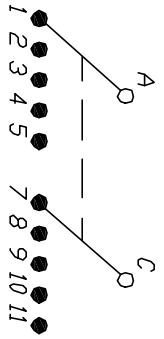
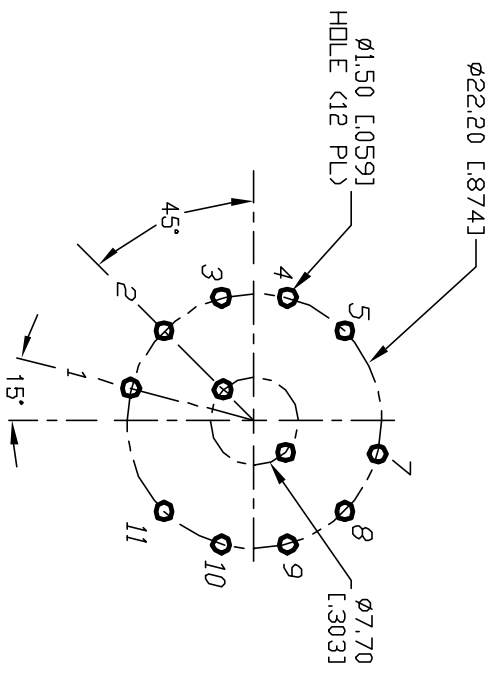


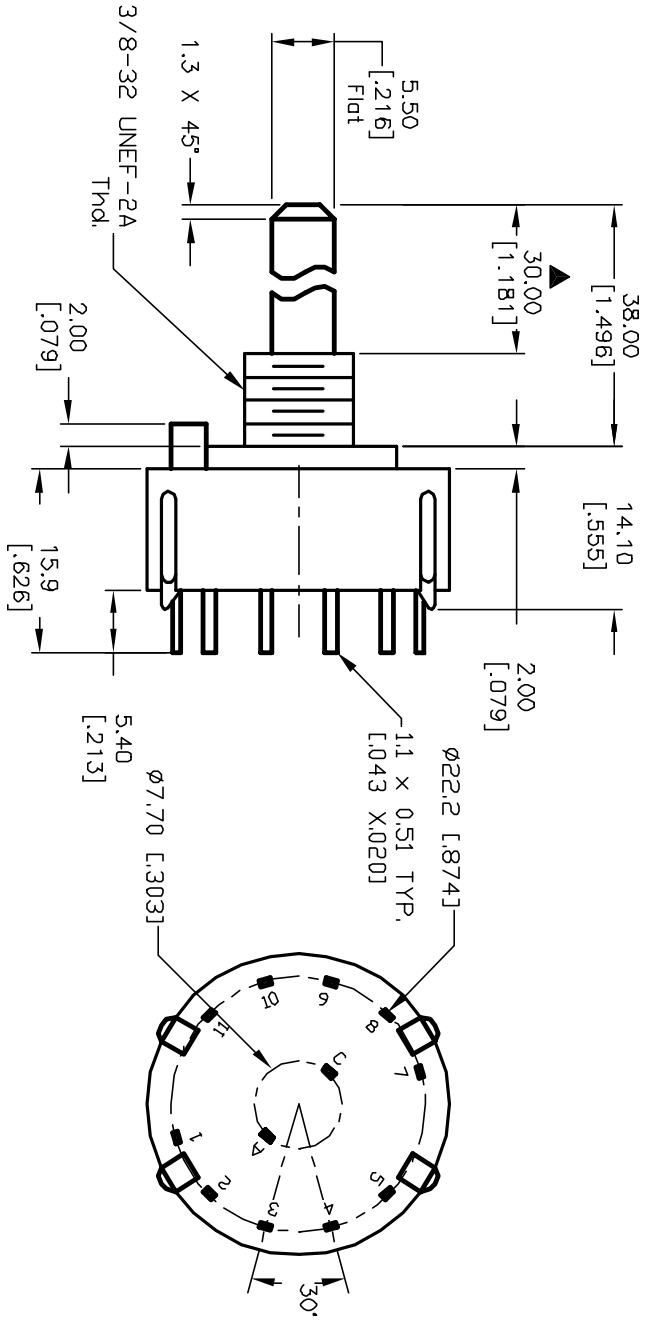
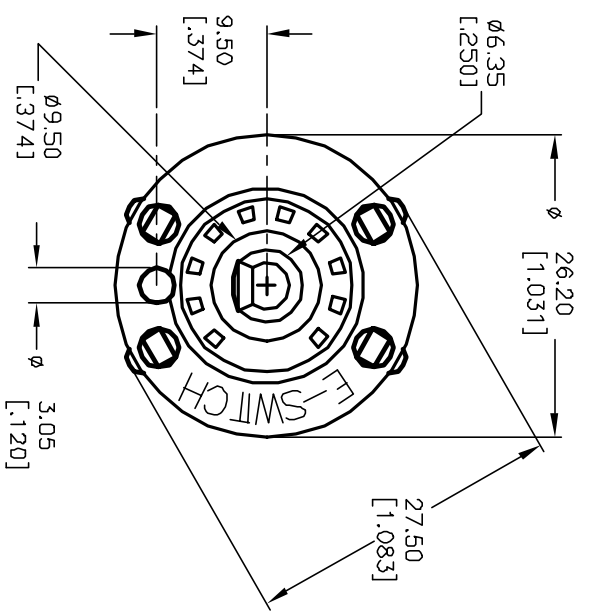
- NOTES:
1. ALL DIMENSION IN MM [INCH]
  2. GENERAL TOLERANCE: X.X=±0.4  
X.XX=±0.25
  3. TERM. NOS. FOR REF. ONLY
  4. CONTACT RATING SWITCHING: 150mA, 250V AC/DC  
350mA, 110V AC/DC
  5. OPERATING FORCE: 425±100 CM/STANDARD
  6. OPERATING TEMP: -30° to 85°C
  7. CIRCUIT 2 Pole, 5 POSITIONS, 30° INDEX.
  8. DIELECTRIC STRENGTH: 1000V RMS min. @SEA LEVEL
  9. DESIGNATE MAJOR DIMENSIONS
  10. SUPPLIED LOCK NUT AND WASHER (NOT SHOWN).



CONTACT CONFIGURATION  
Timing: Non-Shorting (BBM)



RECOMMENDED P.C.B. LAYOUT



B	12222	REVISED DESC PER CATALDG	7/5/02	CJB
A	11514	RELEASED FOR PRODUCTION	5/29/01	CJB
REV.	ECN No.	DESCRIPTION	DATE	CHKD

TITLE		SCALE	DATE	DR	DWG	REV
KC-25-A-(30.0mm) 01-N-P-S		1.5:1	5/29/01	CJB	G510896	B

**E-SWITCH®**

THE INFORMATION CONTAINED IN THIS DOCUMENT IS PROPRIETARY TO E-SWITCH AND IS NOT TO BE COPIED OR TRANSFERRED