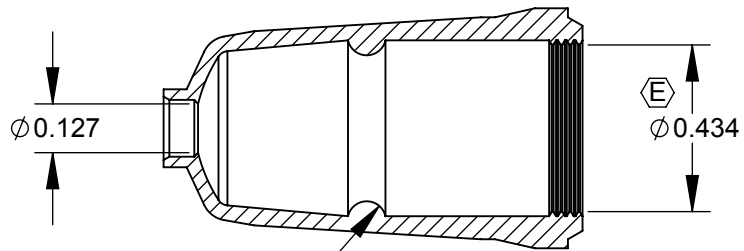


ⓔ LUBRICATED AREA



R0.05 SECTION A-A

ⓔ MATERIAL: THERMOPLASTIC RUBBER  
COLOR-BLACK.  
SYNTHETIC LUBRICANT

NOTES:

1. ALL DIMENSIONS FOR REFERENCE ONLY.
2. THIS PART IS RoHS COMPLIANT.

**CUSTOMER DRAWING**

					THIS DRAWING DESCRIBES A DESIGN CONSIDERED PROPRIETARY IN NATURE, DEVELOPED AND MANUFACTURED BY SWITCHCRAFT INC. AND IS RELEASED ON A CONFIDENTIAL BASIS FOR IDENTIFICATION PURPOSES ONLY.				
UNLESS OTHERWISE SPECIFIED					SIZE *	WIDTH *	MULT *	LBS/M *	TEMPER *
E	ECO #26490	01/19/10	PNK	SRC	FINISH *			MATERIAL (SEE NOTES)	
D	ECO #25759 REDRAWN IN SW	12/05/07	PNK	SRC	SPEC No. *			SPEC No. *	
C	ECO #25087	06/16/05	PNK	SRC	FIRST USED ON *		SCALE 2:1		
B	ECO #21309	08/21/96	PNK	SRC	DATE DRAWN	BY	CHKD	APVD	
A	ECO #21001	10-1-96	MM	RB	1-Oct-96	MM	RB	RB	
REVISIONS					NAME		PART No.		REV
DO NOT SCALE DRAWING					BOOT		EN3BOOT		E

SolidWorks CAD File

