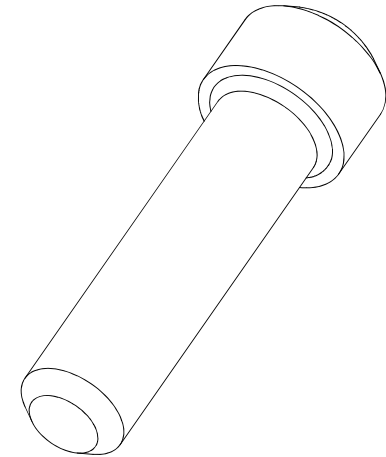
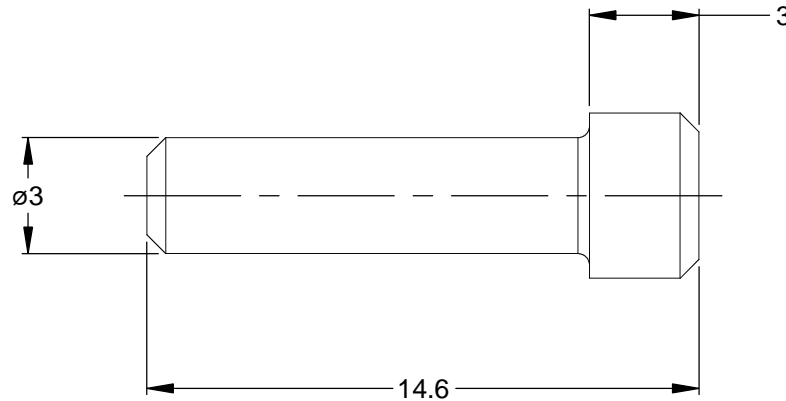
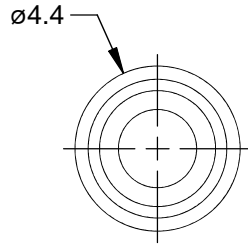


REVISIONS					
REV	ECO	DESCRIPTION	DATE	BY	APPR
A3	-	RELEASE NEW DWG FORMAT	06NOV13	DRP	-



NOTES: UNLESS OTHERWISE SPECIFIED

1. MATERIAL: THERMOPLASTIC; RoHS COMPLIANT
2. COLOR: WHITE
3. CONTACT SIZE: 16
4. USE WITH AT, ATP & AHD SERIES CONNECTORS
5. ALL DIMENSIONS ARE FOR REFERENCE USE ONLY.

		A114017											
		PART NUMBER		DESCRIPTION									
				ITEM									
QUANTITY		MATERIALS LIST											
UNLESS OTHERWISE SPECIFIED		SIGNATURES		DATE									
1) All dimensions are in metric(mm).		DRAWN: D.PARKS		06NOV13									
2) Tolerances are as follows:		CHECKED:											
1 PL DEC ±0.30		ENGINEER:											
2 PL DEC ±0.15		APPROVAL:											
3 PL DEC ±0.08		CUSTOMER:											
3) Note reference =		<h1 style="margin: 0;">Amphenol</h1> <p style="margin: 0;">Sine Systems - www.amphenol-sine.com 44724 Morley Drive Clinton Township, MI 48036</p>											
MATERIAL SPECIFICATIONS:													
PROCESS SPECIFICATIONS:		SEAL, PLUG, CONTACT SIZE 16, AT, ATP & AHD SERIES											
NEXT ASS'Y:		THIS DRAWING IS SUPPLIED FOR INFORMATION ONLY. DESIGN FEATURES, SPECIFICATIONS AND PERFORMANCE DATA SHOWN HEREON ARE THE PROPERTY OF THE AMPHENOL CORPORATION. NO RIGHTS OF REPRODUCTION ARE IMPLIED. ALL DIMENSIONS ARE SUBJECT TO NORMAL MANUFACTURING VARIATIONS.		<table border="1" style="width: 100%; border-collapse: collapse;"> <tr> <td style="text-align: center;">SIZE</td> <td style="text-align: center;">TYPE</td> <td style="text-align: center;">DWG NO:</td> <td style="text-align: center;">REVISION</td> </tr> <tr> <td style="text-align: center; font-size: 2em;">A</td> <td style="text-align: center; font-size: 2em;">C-</td> <td style="text-align: center; font-size: 1.5em;">A114017</td> <td style="text-align: center; font-size: 2em;">A3</td> </tr> </table>		SIZE	TYPE	DWG NO:	REVISION	A	C-	A114017	A3
SIZE	TYPE	DWG NO:	REVISION										
A	C-	A114017	A3										
		SCALE: NONE		SHEET 1 OF 1									