

DESCRIPTION: 8W8 Female Connector - 40 Amp Contact

Specification:

Shell: Steel, Tin Plated

Insulator: PBT +30% Fibre-Glass,  
Black, UL 94V-0

Contacts: Brass - Gold Flash over Nickel

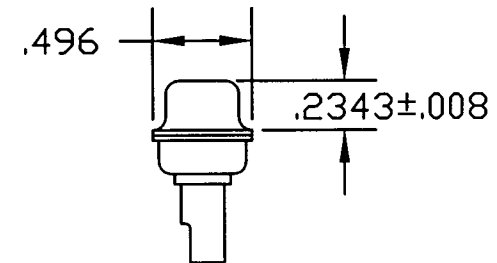
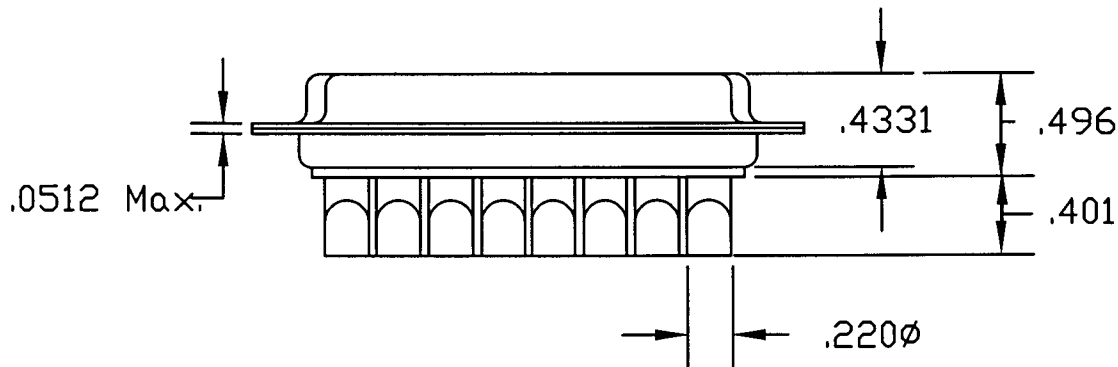
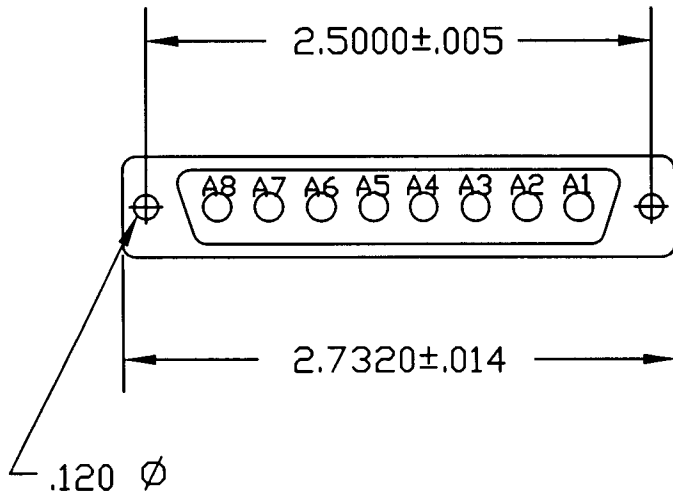
Current Rating: Power - 40 Amps


Contact Resistance: 15mΩHMS MAX.

Insulator Resistance: 1000 MΩHMS MIN.

Voltage: 500V AC for 1 minute

Temperature: -50°C to +100°C



|  |   |                            |                       |                  |
|--|---|----------------------------|-----------------------|------------------|
|  | THESE DRAWINGS AND SPECIFICATIONS ARE THE PROPERTY OF NorComp AND SHALL NOT BE REPRODUCED, COPIED OR USED AS THE BASIS FOR THE MANUFACTURE OF SALE OF APPARATUS WITHOUT WRITTEN PERMISSION. |                            | DRAWN:<br>PAM JENKINS | DATE:<br>4-11-01 |
|  |   |                            | CHECKED:              | DATE:            |
| <h1>NorComp</h1>   |   | SCALE:                     | SHEET 1 OF 1          | REV 1            |
|  |   | DWG NO.<br>680-8W8-202-401 |                       |                  |