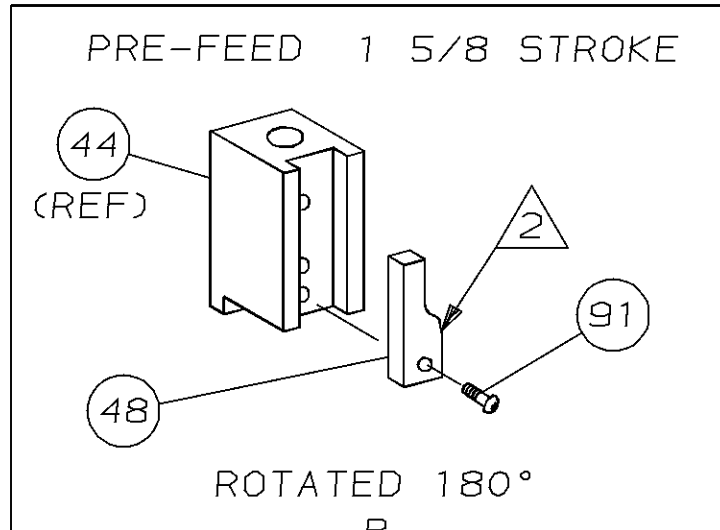
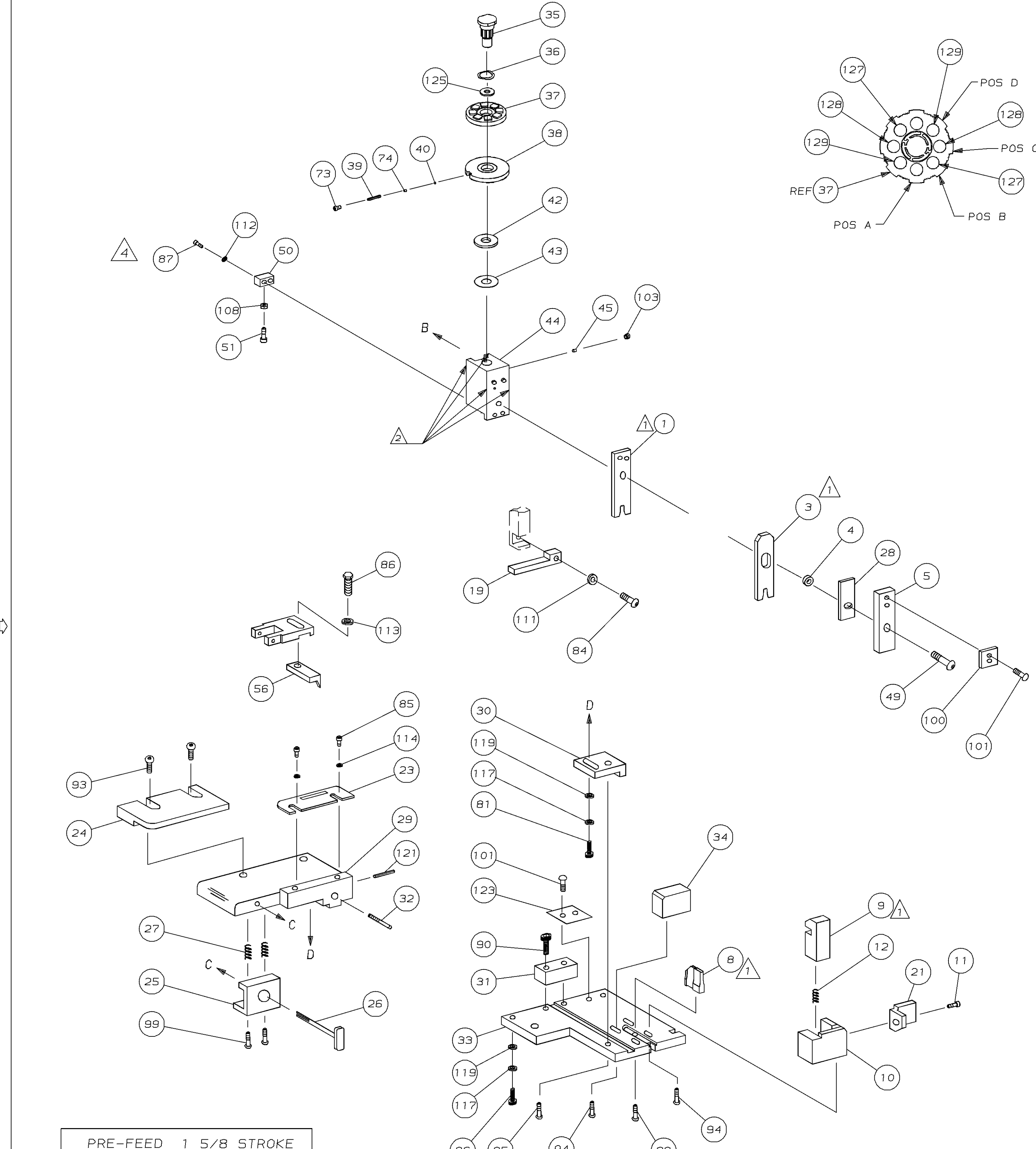


PART NUMBER	REV	FIRST USED
466975-5	C	854040-3

TERMINAL NAME:		CRIMPING DATA		
SIZE	20DE	AMPLIMITE	CONTACT	
	PIN	SOCKET		
	748333	748610		
VISIBLE PAD LTR		CRIMP HEIGHT	WIRE SIZE	
A		.026 ±.001	26	
B		.024 ±.001	28	
C		NOT	USED	
D		.029 ±.001	24	
CRIMP		SIZE	TYPE	RANGE
WIRE		.042	F	28-22
INSUL		.048	0	.030-.040
FEED		APPL INST	SET UP GAGE	LAYOUT
.220		SEE CUSTOMER MANUAL	NONE	621-A
.217				
TERM APPL SPEC		-		
WIRE STRIP LENGTH		-		

QTY	REV	DESCRIPTION	ITEM NO
			70
			69
			68
			67
			66
			65
			64
			63
			62
			61
			60
			59
			58
			57
			56
			55
			54
			53
			52
			51
			50
			49
			48
			47
			46
			45
			44
			43
			42
			41
			40
			39
			38
			37
			36
			35
			34
			33
			32
			31
			30
			29
			28
			27
			26
			25
			24
			23
			22
			21
			20
			19
			18
			17
			16
			15
			14
			13
			12
			11
			10
			9
			8
			7
			6
			5
			4
			3
			2
			1

QTY	REV	DESCRIPTION	ITEM NO		
2	-	C	7-354779-2	PIN, WIRE DISC (.3350)D	129
2	-	C	6-354779-8	PIN, WIRE DISC (.3330)C	128
2	-	C	6-354779-2	PIN, WIRE DISC (.3300)B	127
					126
1	-	A	986950-1	WASHER, FLAT PRECISION	125
					124
1	-	B	690701-2	PLATE, SERIAL NO.	123
					122
1	-	A	4-21028-0	PIN,SLT SPR(φ.093x.75)ST GDE PL	121
					120
2	-	A	21899-2	WASHER,FLAT(#10)S G ADJ BLK	119
					118
2	-	A	21024-5	WASHER, LOCK (#10)ADJ BLOCK	117
					116
					115
2	-	A	21024-2	WASHER,LOCK(#4)FRONT STP GUIDE	114
REF	-	A	21024-4	WASHER,LOCK(#8)FEED FINGER	113
2	-	A	21024-4	WASHER,LOCK(#8)DEP-HOLD	112
REF	-	A	21024-4	WASHER,LOCK(#8)STRIPPER	111
					110
					109
1	-	A	21018-5	NUT, HEX(#6)HOLD DOWN	108
					107
					106
					105
					104
1	-	A	21009-2	SCR,SKT SET(1/4-20x.25 LW)RAM	103
					102
4	-	A	21017-2	SCR,DRIVE(#2x.19)ID PLATE	101
1	-	B	819347-1	PLATE, IDENTIFICATION	100
2	-	A	3-21002-0	SCR,BHC(10-32x.88)DRAG	99
1	-	A	22733-8	SCR,BHC(8-32x.38 LW)ANVIL	98
					97
1	-	A	3-21000-8	SCR,SHC(10-32x.88)MOUNTING	96
1	-	A	2-22733-1	SCR,BHC(10-32x.50)SG ADJ BLK	95
4	-	A	22733-9	SCR,BHC(8-32x.50)SHEAR-TERM SUP	94
2	-	A	2-21002-2	SCR,BHC(8-32x.50)R STP GDE	93
					92
1	-	A	1-21002-7	SCR,SHC(6-32x.50)CAM	91
2	-	A	2-21000-7	SCR,SHC(8-32x.50)SCR BLK	90
					89
					88
2	-	A	2-21000-7	SCR,SHC(8-32x.47)DEP-HOLD DOWN	87
REF	-	A	2-22603-0	SCR,HEX HD(8-32x.31)FEED FINGER	86
2	-	A	1-21000-3	SCR,SHC(4-40x.25)F ST GUIDE	85
REF	-	A	22733-9	SCR,BHC(8-32x.50 SL)STRIPPER	84
					83
					82
					81
1	-	A	3-21000-4	SCR,SHC(10-32x.38)SG ADJ BL	80
					79
					78
2	-	B	463310-8	BLADE, STRIPPING (#26)	77
					76
					75
1	-	A	690603-1	SPRING, ASSIST	74
1	-	A	23030-1	SCR,SKT CAP(6-32x.25)CP DSC	73
					72
					71



QTY	REV	DESCRIPTION	ITEM NO
-5	U/M	DWG SIZE	
REVISION OF EACH ASSY NO (WHEN BLANK, USE DWG REVISION)			
PARTS LIST			

QTY	REV	DESCRIPTION	ITEM NO
-5	U/M	DWG SIZE	
REVISION OF EACH ASSY NO (WHEN BLANK, USE DWG REVISION)			
PARTS LIST			

DIMENSIONS IN INCHES. DO NOT SCALE PRINT. TOLERANCES UNLESS OTHERWISE SPECIFIED.		MACHINE REF STRIPPER CRIMPER	
DR	12/6/93	APP	12/6/93
JC BAKER		E. KOOTTE	
2 PLC DEC ±		REL	1/26/94
3 PLC DEC ±		B. MORGAN	
4 PLC DEC ±			
ANGLES ±			
SURF TEXTURE: ✓			
REMOVE BURRS, BREAK SHARP EDGES R.015 MAX			
C	0150-6807-96	CE	4-96
B	0150-4956-93	TB	12-93
P/F	LTR	REVISION RECORD	APP
SCALE	D	DWG NO	466975-5
SHEET	1	REV	C

THIS DRAWING IS A CONTROLLED DOCUMENT FOR AMP INCORPORATED. IT IS SUBJECT TO CHANGE AND THE CONTROLLING ENGINEERING ORGANIZATION SHOULD BE CONTACTED FOR THE LATEST REVISION.

THIS INFORMATION IS CONFIDENTIAL AND IS DISCLOSED TO YOU ON CONDITION THAT NO FURTHER DISCLOSURE IS MADE BY YOU TO OTHER THAN AMP PERSONNEL WITHOUT WRITTEN AUTHORIZATION FROM AMP INCORPORATED, HARRISBURG, PA.