



Copyright FCI.

Configuration of customer Documents list

P/N	Documents	No.	Title
SLW__R/S-1C7ALF	SPEC	SC-SLW05	
	DWG	SHEET2	CAT NO. TABLE FOR 1mm SPACING CONNECTOR
		SHEET3	1mm SPACING CONNECTOR
		SHEET4	1mm SPACING CONNECTOR
	CABLE	SHEET5	RECOMMENDED CABLE

mat'l. code				surface ISO 1302 <input checked="" type="checkbox"/> ISO 406 ISO 1101		tolerance ISO 406 ISO 1101		projection 		product family 58JF/TF		CODE JP
ltr	ecn no	dr	date	tolerances unless otherwise specified				mm		title 1mm SPACING CONNECTOR DOCUMENT LIST (Cat. No. SLW__R/S-1C7ALF)		
A	J11-220	S.W	2011-10-11	angles	linear	scale \times		dwg no		sheet 1 of 5	size	
				dr	<i>S. Withler</i>	2011-10-11			10118640		A4	
				enrg	<i>S. Withler</i>	2011-10-11						
				chr	<i>S. Withler</i>	2011-10-11						
				appd	<i>[Signature]</i>	08/11/11						
sheet index	revision sheet	A	A	A	A	A	type Product Customer Drawing		Rev. A			
		1	2	3	4	5						

CAT. NO. & DIMENSIONS

NO. OF CONTACTS (n)	CAT. NO.		DIMENSIONS (NOTE1)	
	RIGHT ANGLE TYPE	STRAIGHT TYPE	A ± 0.3	B ± 0.3
4	SLW 4R-1C7ALF	SLW 4S-1C7ALF	10.2	5.2
5	SLW 5R-1C7ALF	SLW 5S-1C7ALF	11.2	6.2
6	SLW 6R-1C7ALF	SLW 6S-1C7ALF	12.2	7.2
7	SLW 7R-1C7ALF	SLW 7S-1C7ALF	13.2	8.2
8	SLW 8R-1C7ALF	SLW 8S-1C7ALF	14.2	9.2
9	SLW 9R-1C7ALF	SLW 9S-1C7ALF	15.2	10.2
10	SLW10R-1C7ALF	SLW10S-1C7ALF	16.2	11.2
11	SLW11R-1C7ALF	SLW11S-1C7ALF	17.2	12.2
12	SLW12R-1C7ALF	SLW12S-1C7ALF	18.2	13.2
13	SLW13R-1C7ALF	SLW13S-1C7ALF	19.2	14.2
14	SLW14R-1C7ALF	SLW14S-1C7ALF	20.2	15.2
15	SLW15R-1C7ALF	SLW15S-1C7ALF	21.2	16.2
16	SLW16R-1C7ALF	SLW16S-1C7ALF	22.2	17.2
17	SLW17R-1C7ALF	SLW17S-1C7ALF	23.2	18.2
18	SLW18R-1C7ALF	SLW18S-1C7ALF	24.2	19.2
19	SLW19R-1C7ALF	SLW19S-1C7ALF	25.2	20.2
20	SLW20R-1C7ALF	SLW20S-1C7ALF	26.2	21.2
21	SLW21R-1C7ALF	SLW21S-1C7ALF	27.2	22.2
22	SLW22R-1C7ALF	SLW22S-1C7ALF	28.2	23.2
23	SLW23R-1C7ALF	SLW23S-1C7ALF	29.2	24.2
24	SLW24R-1C7ALF	SLW24S-1C7ALF	30.2	25.2
25	SLW25R-1C7ALF	SLW25S-1C7ALF	31.2	26.2
26	SLW26R-1C7ALF	SLW26S-1C7ALF	32.2	27.2
27	SLW27R-1C7ALF	SLW27S-1C7ALF	33.2	28.2
28	SLW28R-1C7ALF	SLW28S-1C7ALF	34.2	29.2
29	SLW29R-1C7ALF	SLW29S-1C7ALF	35.2	30.2
30	SLW30R-1C7ALF	SLW30S-1C7ALF	36.2	31.2

CAT. NO. SLW (n) R -1C7 A LF

SERIES NAME _____

NO. OF CONTACTS _____

R : RIGHT ANGLE TYPE _____

S : STRAIGHT TYPE _____

VARIATION _____

SELECTIVE GOLD PLATING _____

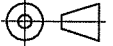
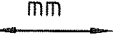
CONTACT AREA : GOLD FLASH

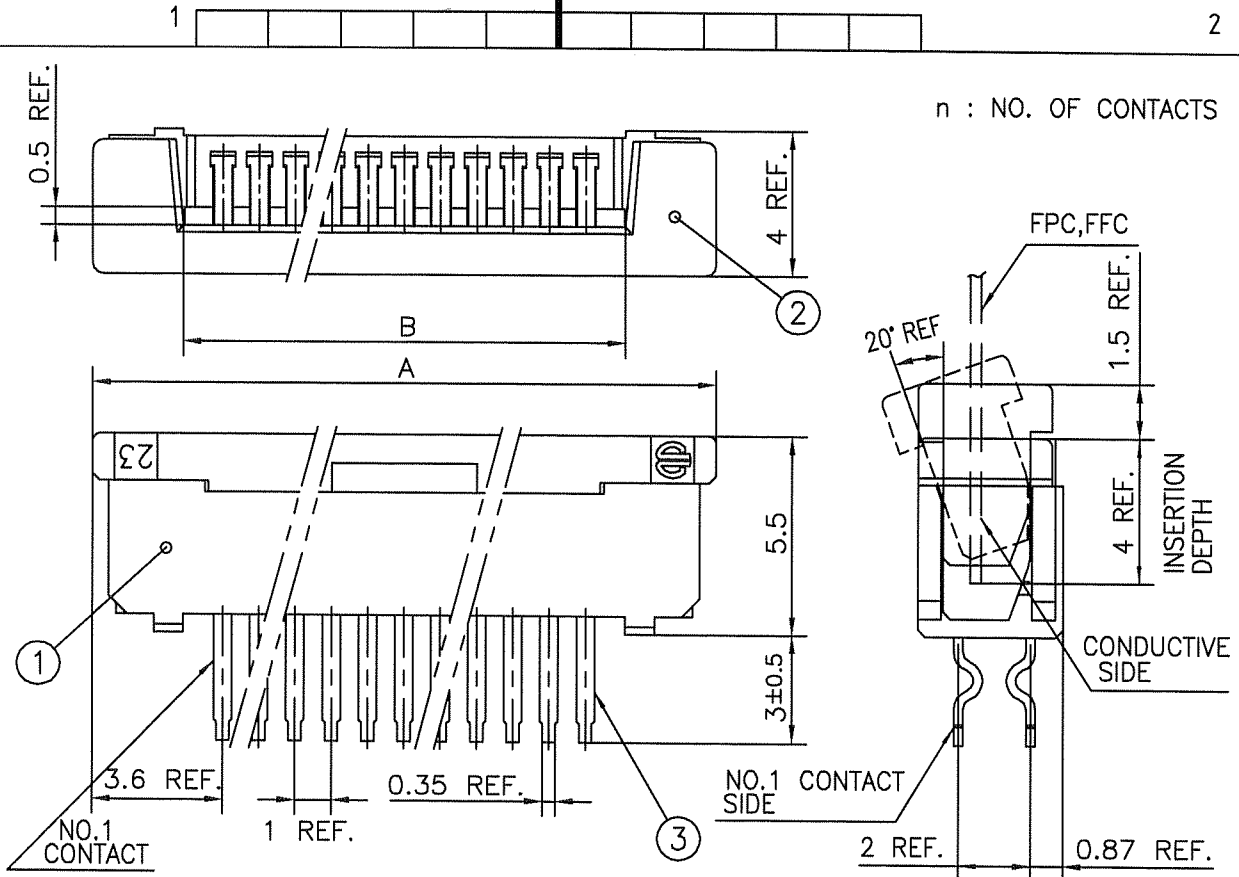
TERMINAL AREA : PURE TIN

LEAD FREE _____

NOTE

1. SEE PART DRAWINGS FOR DIMENSIONS A,B.

mat'l. code				surface ISO 1302 <input checked="" type="checkbox"/>		tolerance ISO 406 <input checked="" type="checkbox"/>		projection 		product family 58JF/TF		CODE JP	
ltr	ecn no	dr	date	tolerances unless otherwise specified		mm 		title		CAT NO. TABLE FOR 1mm SPACING CONNECTOR (Cat. No. SLW__R/S-1C7ALF)			
A				angles	linear	scale \times		dwg no		sheet 2 of 5		size	
				dr	<i>S. Nishida</i>	<i>2011-10-11</i>		FCJ		10118640		A4	
				enr	<i>S. Nishida</i>	<i>2011-10-11</i>		type		Product Customer Drawing		Rev. A	
				chr	<i>S. Nishida</i>	<i>2011-10-11</i>							
				appd	<i>M. Nishida</i>	<i>Oct 11/11</i>							
sheet index	revision sheet												

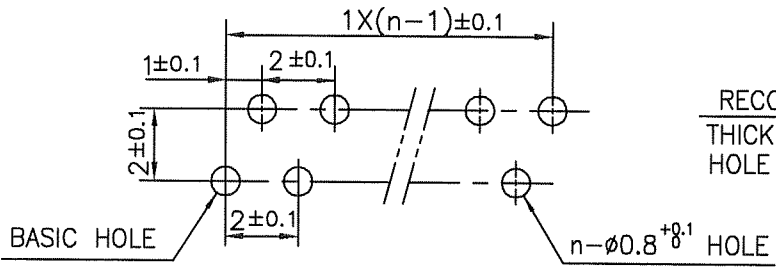


n : NO. OF CONTACTS

1. THIS PRODUCT MEETS EUROPEAN UNION DIRECTIVES AND OTHER COUNTRY REGULATIONS AS DESCRIBED IN GS-22-008

2. THE HOUSING WILL WITHSTAND EXPOSURE TO 260°C PEAK TEMPERATURE FOR 10 SECONDS IN A WAVE SOLDER APPLICATION WITH A 1.6mm THICK CIRCUIT BOARD.

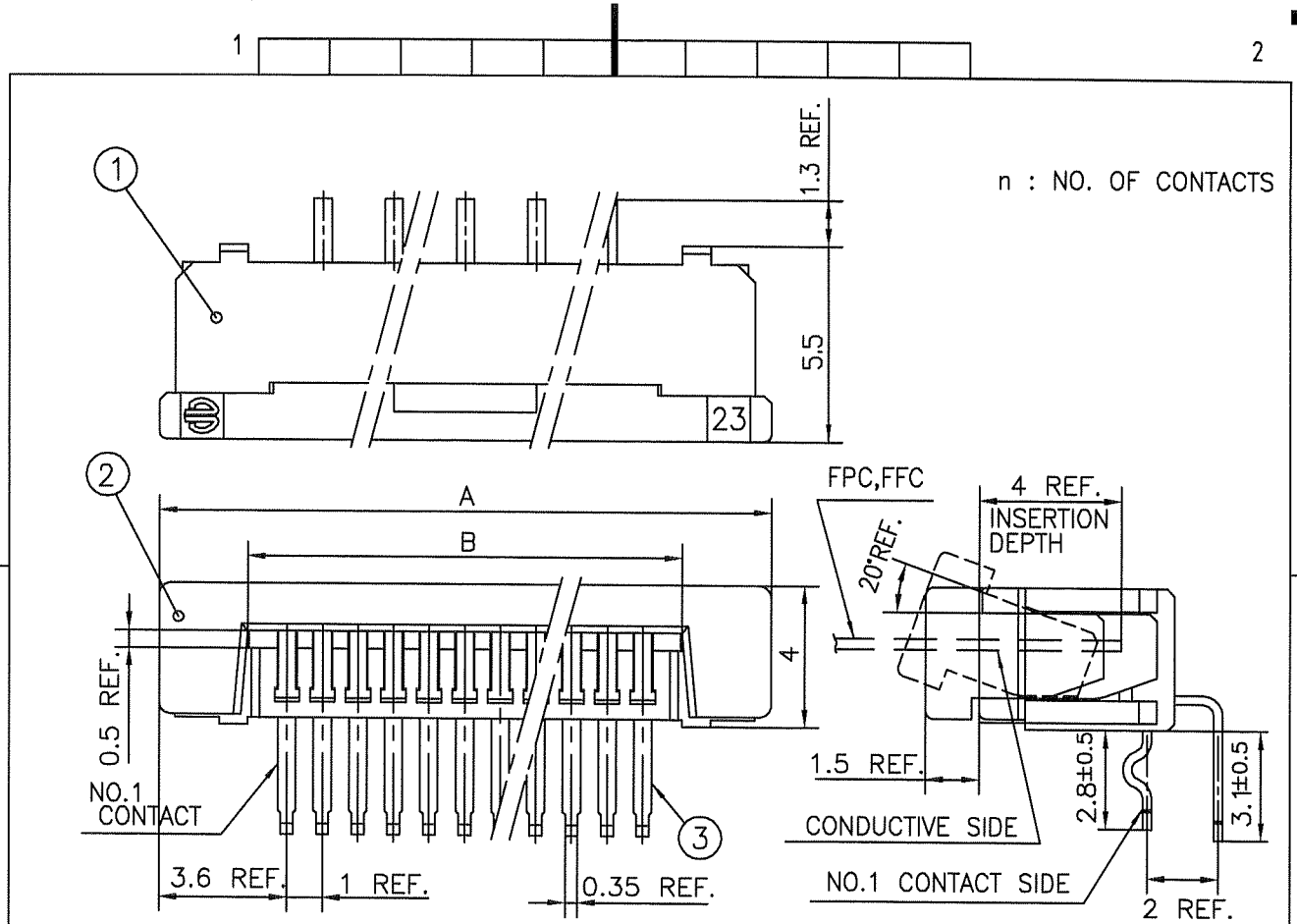
PT.NO.	PARTS NAME	MATERIAL	Q'TY	NOTE
1	HOUSING	NYLON RESIN GLASS REINFORCED (UL94V-0)	1	COLOR : BLACK
2	SLIDER		1	
3	CONTACT	PHOSPHOR BRONZE	n	PLATING CONTACT AREA : GOLD FLASH TERMINAL AREA : PURE TIN



RECOMMENDED PC BOARD THICKNESS : 0.8~1.6 HOLE PATTERN (COMPONENT SIDE)

mat'l. code				surface ISO 1302 <input checked="" type="checkbox"/>		tolerance ISO 406 ISO 1101		projection		product family 58JF		CODE JP			
ltr	ecn no	dr	date	tolerances unless otherwise specified						title					
A				angles		linear ± 0.3		mm		1mm SPACING CONNECTOR (Cat. No. SLW__S-1C7ALF)					
				dr		2011-10-11				dwg no		sheet 3 of 5		size	
				enr		2011-10-11				10118640				A4	
				chr		2011-10-11				type Product Customer Drawing					
				appd		2011/11									
sheet index		revision sheet												Rev. A	

form: A4

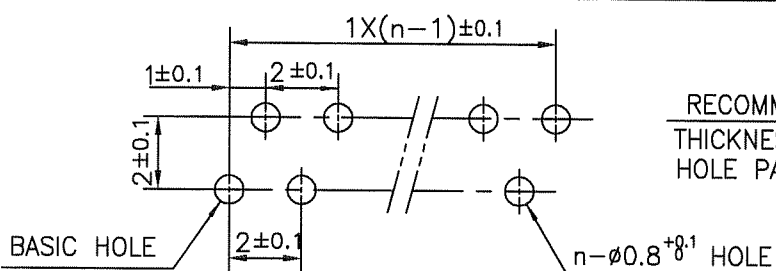


n : NO. OF CONTACTS

1. THIS PRODUCT MEETS EUROPEAN UNION DIRECTIVES AND OTHER COUNTRY REGULATIONS AS DESCRIBED IN GS-22-008

2. THE HOUSING WILL WITHSTAND EXPOSURE TO 260°C PEAK TEMPERATURE FOR 10 SECONDS IN A WAVE SOLDER APPLICATION WITH A 1.6mm THICK CIRCUIT BOARD.

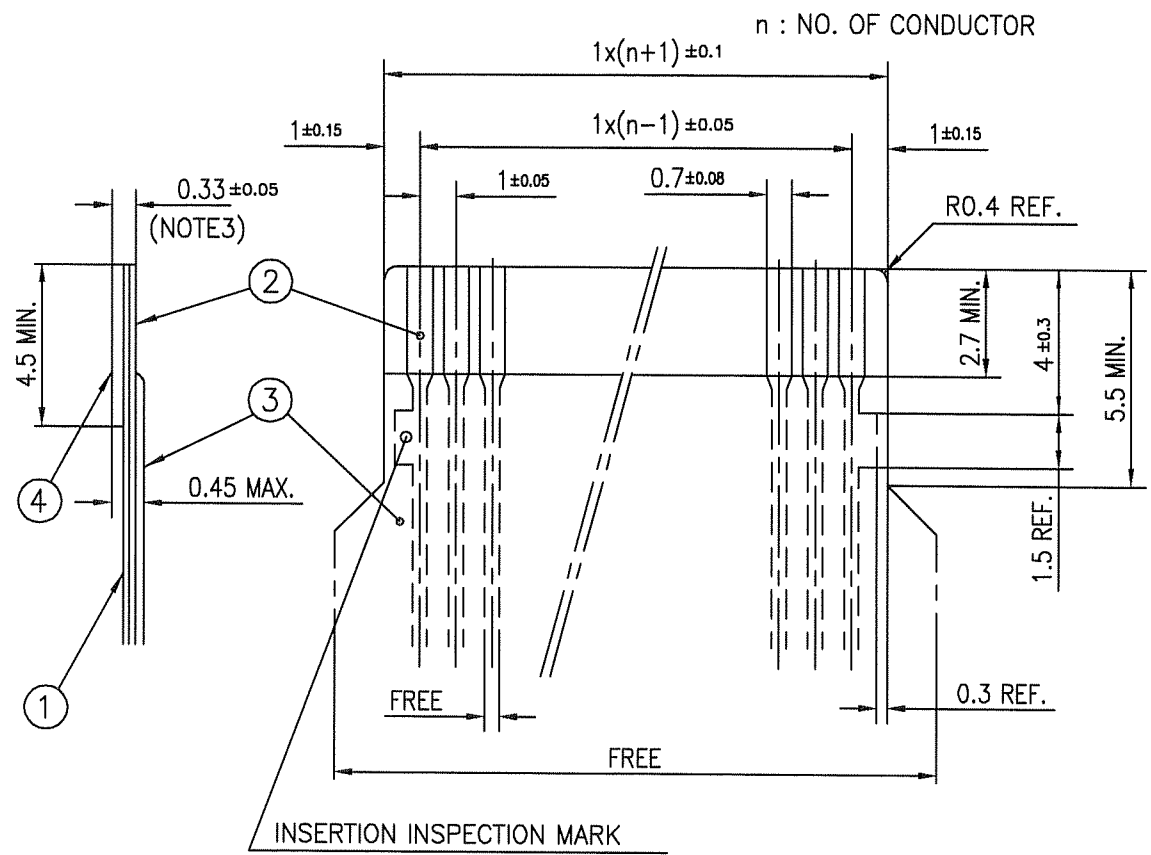
PT.NO.	PARTS NAME	MATERIAL	Q'TY	NOTE
1	HOUSING	NYLON RESIN GLASS REINFORCED (UL94V-0)	1	COLOR : BLACK
2	SLIDER		1	
3	CONTACT	PHOSPHOR BRONZE	n	PLATING CONTACT AREA : GOLD FLASH TERMINAL AREA : PURE TIN



RECOMMENDED PC BOARD THICKNESS : 0.8~1.6 HOLE PATTERN (COMPONENT SIDE)

mat'l. code				surface ISO 1302 <input checked="" type="checkbox"/>		tolerance ISO 406 ISO 1101		projection		product family 58TF		CODE JP	
ltr ecn no dr date				tolerances unless otherwise specified		angles linear ±0.3		mm		title 1mm SPACING CONNECTOR (Cat. No. SLW__R-1C7ALF)			
A								scale \propto		dwg no		sheet 4 of 5	
				dr <i>S. Watanabe</i> 2011-10-11		engr <i>S. Watanabe</i> 2011-10-11				10118640		size A4	
				chr <i>S. Watanabe</i> 2011-10-11		appd <i>S. Watanabe</i> 2011-10-11				type Product Customer Drawing			
sheet index		revision sheet										Rev. A	

RECOMMENDED CABLE (FPC)



PT. NO.	PARTS NAME	MATERIAL	THICKNESS (μm)
1	BASE FILM	POLYIMIDE OR POLYESTER OR EQUAL	25
2	CONDUCTOR	COPPER FOIL(PLATING : GOLD 0.25μm MIN.)	35
3	OVERLAY	POLYIMIDE OR POLYESTER OR EQUAL	—
4	SUPPORTING TAPE	POLYESTER OR POLYIMIDE OR EQUAL	188

- NOTES
1. NO BURR AT EACH PORTION.
 2. NO PEELING IN COMMON USE.
 3. TOTAL THICKNESS LIMIT OF EACH MATERIAL (INCLUDING ADHESIVE AGENT) IS SPECIFIED.

mat'l. code		surface ISO 1302 <input checked="" type="checkbox"/>		tolerance ISO 406 <input checked="" type="checkbox"/>		projection		product family 58JF/TF		CODE JP	
ltr	ecn no	dr	date	tolerances unless otherwise specified				title			
A				angles	linear	mm		RECOMMENDED CABLE (Cat. No. SLW__R/S-1C7ALF)			
						scale \times		dwg no		sheet 5 of 5	
				dr	engr	chr	appd	10118640		size A4	
								type Product Customer Drawing			
sheet index	revision sheet										Rev. A