

PART NUMBER	REV	FIRST USED	TERMINATOR	FEED TYPE	DESCRIPTION
1339582-1	A		BENCH & LEADMAKER	MECH POST FEED	HD-I APPLICATOR
7-1339582-1	A		BENCH & LEADMAKER	MECH POST FEED	-1 AND SPARE PARTS
7-1339582-7	A				SPARE PARTS KIT

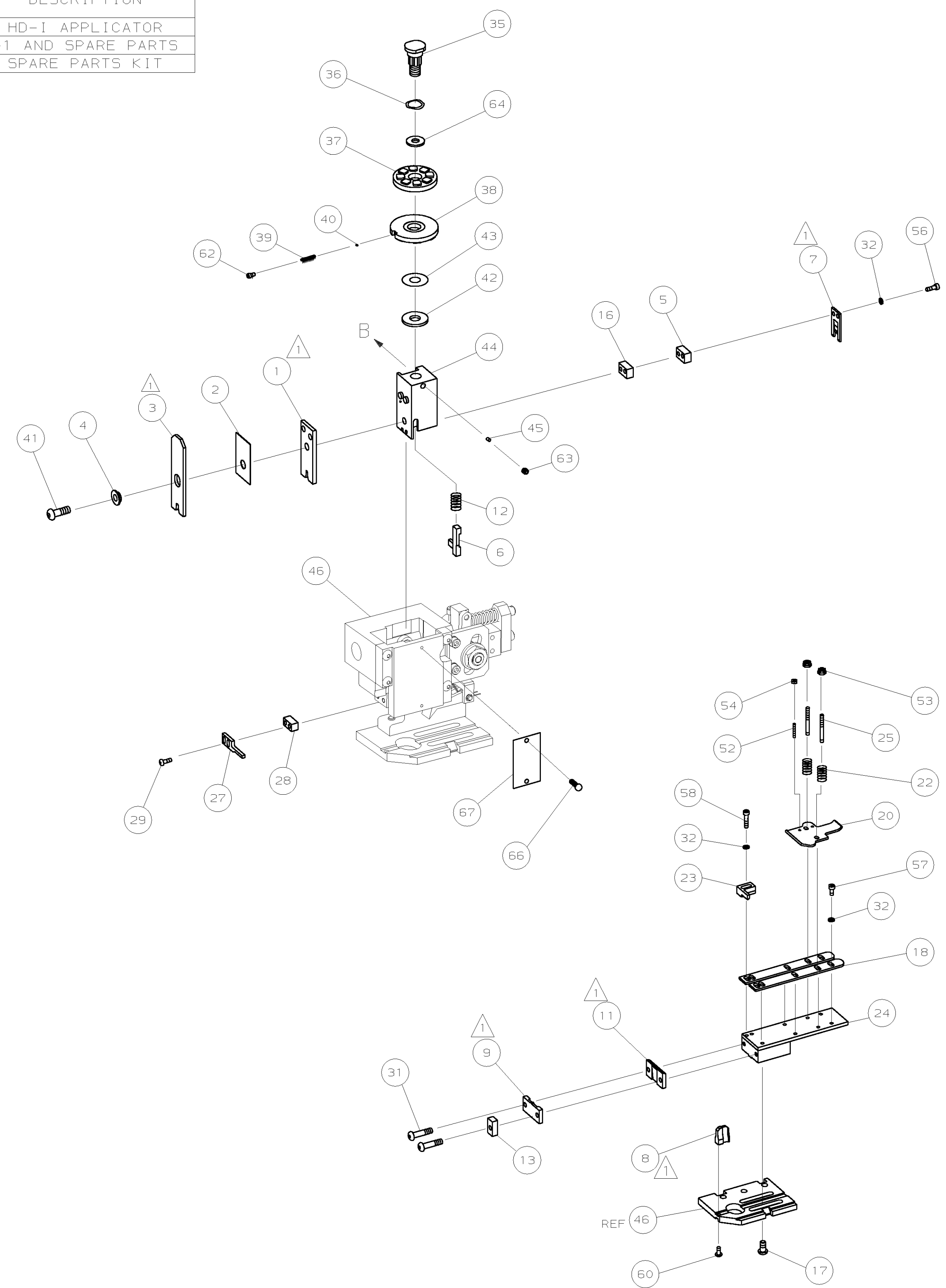
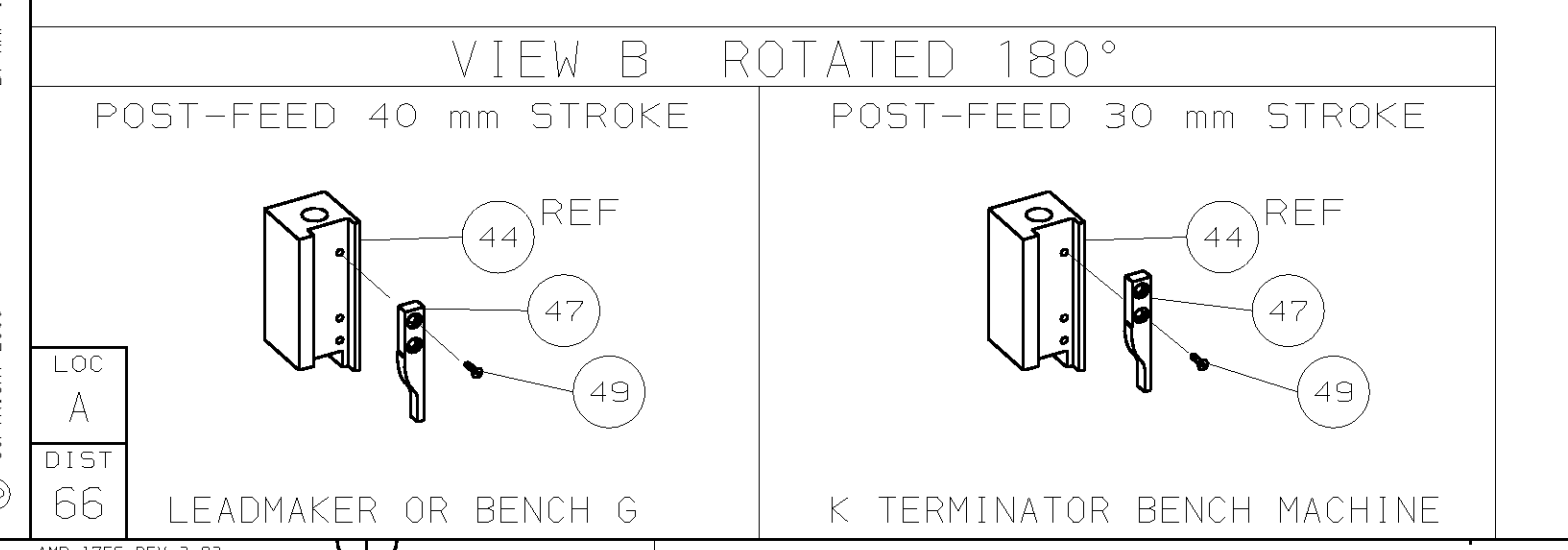
CRIMP DATA		AMP TERMINAL	AMP CRIMP SPECS
TERMINAL NAME: AMP - EDGE			
CRIMP	SIZE	TYPE	RANGE
WIRE	1.78 [.070 IN]	F	22 AWG - 18 AWG
INSUL	3.05 [.120 IN]	0	2.03-2.54 [.080-.100 IN]
WIRE STRIP LENGTH		APPL INSTRUCTION	
3.20-4.00 [.126-.157 IN]		408-8323	

TERMINAL	FEED
APPL SPEC 114-3118	13.77 [.542 IN]

TERMINALS APPLIED			
61561	-	-	-
-	-	-	-
-	-	-	-
-	-	-	-
-	-	-	-
-	-	-	-
-	-	-	-
-	-	-	-
-	-	-	-
-	-	-	-
-	-	-	-

WIRE SIZE	CRIMP HEIGHT	PIN PN AND LENGTH [IN]
mm ² AWG		
18 AWG	1.12 ±0.05 [.044 ±.002 IN]	3-354779-6 [.3170]
20 AWG	0.99 ±0.05 [.039 ±.002 IN]	4-354779-6 [.3220]
22 AWG	0.91 ±0.05 [.036 ±.002 IN]	5-354779-4 [.3260]
-	-	-
-	-	-
-	-	-
-	-	-
-	-	-
-	-	-
-	-	-
-	-	-
-	-	-
-	-	-
-	-	-
-	-	-
-	-	-
-	-	-

- RECOMMENDED SPARE PARTS.
- GREASE RAM, CAM, CAM FOLLOWER AND FEED ROD LIGHTLY.
- LUBRICATE DAILY PER THE APPLICATOR INSTRUCTION SHEET SUPPLIED WITH THE APPLICATOR.
- CUT TO LENGTH AT ASSEMBLY.



QTY	REQD PER ASSY	PART NO	DESCRIPTION	ITEM NO		
-	1	1	1339582	PRINT, APPLICATOR LOG SHEET	73	
-	1	1	1338705-2	DOCUMENTATION PACKAGE	72	
-	-	-	-	-	71	
-	-	-	-	-	70	
-	-	-	-	-	69	
-	-	-	-	-	68	
-	1	1	461264-1	PLATE, IDENTIFICATION	67	
-	2	2	21017-2	SCR,DRIVE (#2X.19) ID PLATE	66	
-	-	-	-	-	65	
-	1	1	986950-1	WASHER, FLAT PRECISION	64	
-	1	1	3-18031-0	SCR,SKT SET (M6X6) RAM	63	
-	1	1	18023-9	SCR,SKT CAP (M4X6) CP D5C	62	
-	-	-	-	-	61	
-	1	1	18024-7	SCR,BHC (M4X10) ANVIL	60	
-	-	-	-	-	59	
-	2	2	1-18023-3	SCR,SHC (M4X16) HOLD DOWN	58	
-	5	5	18023-9	SCR,SHC (M4X6) STRIP GUIDE	57	
-	2	2	1-18023-1	SCR,SHC (M4X10) SLUG BLADE	56	
-	-	-	-	-	55	
-	2	2	18029-1	NUT, HEX (M3) DRAG	54	
-	2	2	986965-1	NUT, HEX SL (M4) DRAG STUD	53	
-	2	2	2-18032-2	SCR,SKT SET (M3X10) DRAG	52	
-	-	-	-	-	51	
-	-	-	-	-	50	
-	1	1	18024-3	SCR,BHC (M3X10) CAM	49	
-	-	-	-	-	48	
-	1	1	1338676-1	CAM, POST-FEED 30 & 40 mm ST	47	
-	1	1	1338662-1	APPLICATOR, BASIC (SUBASSY)	46	
-	1	1	690191-1	PLUG, NYLON	45	
-	1	1	1320998-1	RAM	44	
-	1	1	690125-1	WASHER, LAMINATED	43	
-	1	1	690124-1	WASHER, RAM	42	
-	1	1	2-18024-6	SCREW,BHC (M8X25) CRIMPER	41	
-	1	1	23241-1	BALL, STEEL	40	
-	1	1	2-22278-7	SPRING, COMPRESSION	39	
-	1	1	1320922-1	DISC, INSULATION	38	
-	1	1	354777-1	WIRE DISC, PLASTIC	37	
-	1	1	22480-5	WASHER, SPRING	36	
-	1	1	690212-1	POST, RAM	35	
-	-	-	-	-	34	
-	-	-	-	-	33	
-	9	9	18025-2	WASHER, LOCK (M4) SHEAR BL	32	
-	2	2	1-18024-0	SCR,BHC (M4X20) SHEAR PL	31	
-	-	-	-	-	30	
-	2	2	18024-8	SCR,BHC (M4X12) STRIPPER	29	
-	1	1	3-690451-2	SPACER, STRIPPER	28	
-	1	1	240639-1	STRIPPER	27	
-	-	-	-	-	26	
-	2	2	1320906-1	DRAG, STUD	25	
-	1	1	1320995-1	STRIP GUIDE	24	
-	1	1	240825-4	PLATE, STRIP HOLD DOWN	23	
-	2	2	4-22281-1	SPRING, DRAG	22	
-	-	-	-	-	21	
-	1	1	1338665-1	DRAG, STOCK	20	
-	-	-	-	-	19	
-	2	2	1338663-2	GUIDE, LOWER STRIP	18	
-	4	4	1-18024-8	SCR,BHC (M6X12) STRIP GD PL	17	
-	1	1	1338708-1	SPACER, SLUG BLADE	16	
-	-	-	-	-	15	
-	-	-	-	-	14	
-	1	1	690481-3	SPACER, HOLD DOWN	13	
-	1	1	23846-1	SPRING, HOLD DOWN	12	
-	1	1	240644-1	PLATE, REAR SHEAR	11	
-	-	-	-	-	10	
-	1	1	690496-1	PLATE, FRONT SHEAR	9	
-	1	2	1	1333215-9	ANVIL	8
-	1	1	690474-6	BLADE, SLUG	7	
-	1	1	2-455892-0	HOLD DOWN, TERMINAL	6	
-	1	1	4-240641-3	SPACER, SLUG BLADE	5	
-	1	1	238009-4	SPACER, BLOCK CRIMPER	4	
-	1	2	1	1-456135-7	CRIMPER, INSULATION	3
-	1	1	455888-3	SPACER, CRIMPER	2	
-	1	2	1	456404-5	CRIMPER, WIRE	1

REVISION OF EACH ASSY NO (WHEN BLANK, USE DWG REVISION)

QTY REQD PER ASSY PARTS LIST

REVISION RECORD

DIMENSIONS: mm [INCHES] MATL HT TR FIN

DO NOT SCALE PRINT.

TOLERANCES UNLESS OTHERWISE SPECIFIED:

1 PLC DEC ± -

2 PLC DEC ± -

3 PLC DEC ± -

ANGLES ± -

SURF TEXTURE: ✓

REMOVE BURRS, BREAK SHARP EDGES RO.38 MAX

DR 21AUG01 APP 21AUG01 F.BACKHURST

L.LOFTHOUSE REL 03-10-01 M.CLIFFORD

AMP Incorporated Harrisburg, PA 17105-3608

NAME END FEED HD-I APPLICATOR MACHINE REF HD-I APPL

SCALE DWG NO 1339582 SHEET REV 1 OF 1 A

CASE CODE 00779 CUSTOMER AND ASSEMBLY DRAWING RESTRICTED TO

THIS DRAWING IS A CONTROLLED DOCUMENT.

LAYOUT L1339582 SET UP GAGE 458638-3

THIS DRAWING IS UNRELEASED. RELEASED FOR PUBLICATION BY AMP INCORPORATED. ALL RIGHTS RESERVED. 2000

1339582 D C B A