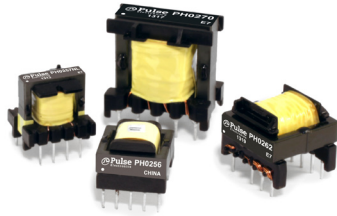


Switch Mode Transformer for AC/DC offline Applications

EE16H, EE16V, EF20H and EF25V Platforms



- Ⓢ AC/DC offline Switch Mode Transformer
- Ⓢ Hipot up to 3000Vrms
- Ⓢ Flyback Topology
- Ⓢ Operational Insulation
- Ⓢ Matched to Tiny Switch and Top Switch chipsets
- Ⓢ Custom Design Available: <60W with up to Reinforced Insulation

Electrical Specifications @ 25C- Operating Temperature -40C to +125C					
PH0256NL	Pri. Inductance	(3-2)	2800 μ H \pm 15%		<p>9Vdc, 0.02A 5Vdc, 1A 80-375Vdc 132KHz</p> <p>FLYBACK TRANSFORMER</p>
	Lk. Inductance w/	(4,5,8,10)	65 μ H max shorted		
	DCR	(3-2) (10-8) (4-5)	3.3	Ω Max	
			0.02		
			0.13		
	Hi-Pot	Pri-Sec	500 Vrms		
	K1 Factor				
PI IC's	TNY264/274				
PH0259NL	Pri. Inductance	(4-1)	1800 μ H \pm 15%		<p>24Vdc, 0.02A 5Vdc, 0.05A</p> <p>FLYBACK TRANSFORMER</p>
	Lk. Inductance w/	(5,6,7,8)	60 μ H max shorted		
	DCR	(4,1) (5-6) (8-6)	2.556	Ω Max	
			0.0168		
			0.174		
	Hi-Pot	Pri-Sec	500 Vrms		
K1 Factor				7200	
PI IC's	TNY266/274				
PH0262NL	Pri. Inductance	(3-1)	790 μ H \pm 10%		<p>12Vdc, 1.25A 9Vdc, 0.02A 95-265Vdc 132KHZ</p> <p>FLYBACK TRANSFORMER</p>
	Lk. Inductance w/	(3-1) (4,5,9,10)	30 μ H max shorted		
	DCR	(3-1) (4-5) (10-9)	1.085	Ω Max	
			0.015		
			0.026		
	Hi-Pot	Pri-Sec			
	K1 Factor				
PI IC's	TNY279				

Switch Mode Transformer for AC/DC offline Applications

EE16H, EE16V, EF20H and EF25V Platforms

PH0270NL	Pri. Inductance	(3-1)	876 $\mu\text{H} \pm 10\%$		<p>FLYBACK TRANSFORMER</p>	
	Lk. Inductance w/	(3-1) (4,5,6,7,9,10)	28 μH max shorted			
	DCR	(3-1)	0.5	Ω Max		
		(4-5)	0.026			
		(9-10)	0.025			
	Hi-Pot	Pri-Sec	1500 Vrms			
	K1 Factor					2900
	PI IC's					TOP244/245/246/254/264

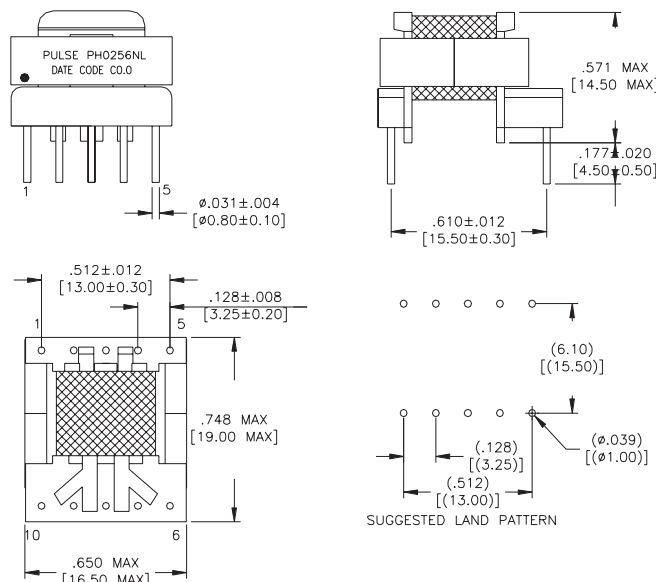
Notes:

1. The temperature of the component (ambient plus temperature rise) must be within the stated operating temperature range.
2. The above transformers and inductors have been tested and approved by Pulse's power IC partners and are sited in the appropriate datasheet or evaluation board documentation at these companies. To determine which IC and IC partners are matched with the above Pulse part numbers please consult the IC Cross Reference on the Pulse website.
3. For flyback topology applications, it is necessary to ensure that the transformer will not saturate in the application. The peak flux density (Bpk) should remain below 2700Gauss. To calculate the peak density, use the following formula: $B_{pk} \text{ (Gauss)} = K1_Factor * I_{pk} \text{ (A)}$

4. In high volt-sec applications, it is important to calculate the core loss of the transformer. Approximate transformer core loss can be calculated as: $CoreLoss \text{ (W)} = 3.6E-14 * (Freq_kHz) * (\Delta B_Gauss)$ where ΔB can be calculated as:
 For Flyback Topology: $\Delta B = K1_Factor * \Delta(A)$
 For Forward Topology: $\Delta B = K1_Factor * Volt\text{-}\mu\text{sec}$
5. The "NL" suffix indicates an RoHS-compliant part number. Non-NL suffixed parts are not necessarily RoHS compliant, but are electrically and mechanically equivalent to NL versions. If a part number does not have the "NL" suffix, but an RoHS compliant version is required, please contact Pulse for availability.

Mechanical

PH0256NL

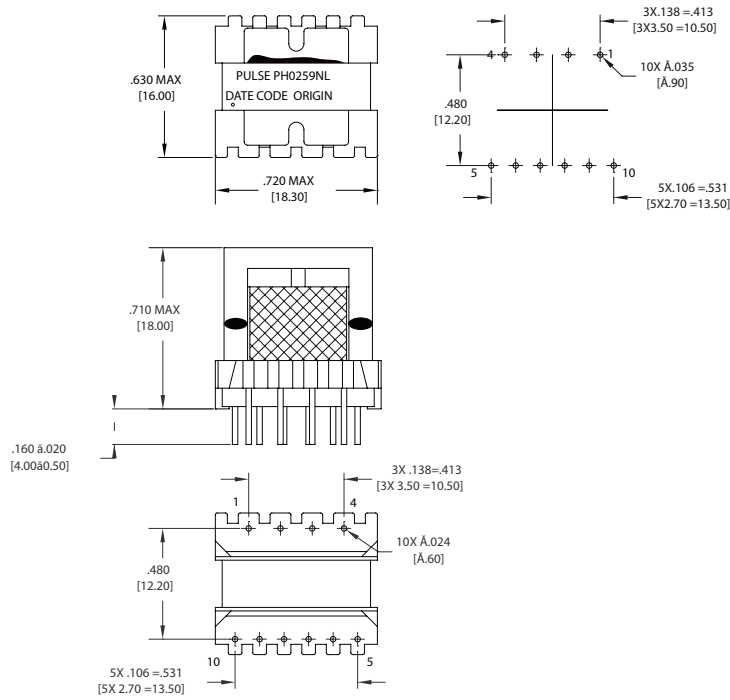


Switch Mode Transformer for AC/DC offline Applications

EE16H, EE16V, EF20H and EF25V Platforms

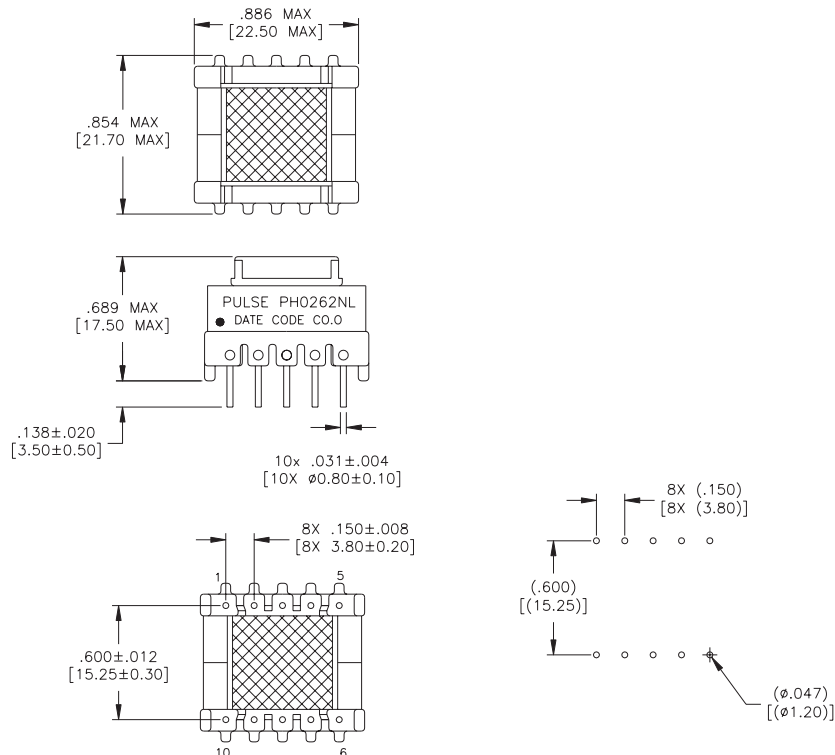
Mechanical

PH0259NL



Mechanical

PH0262NL



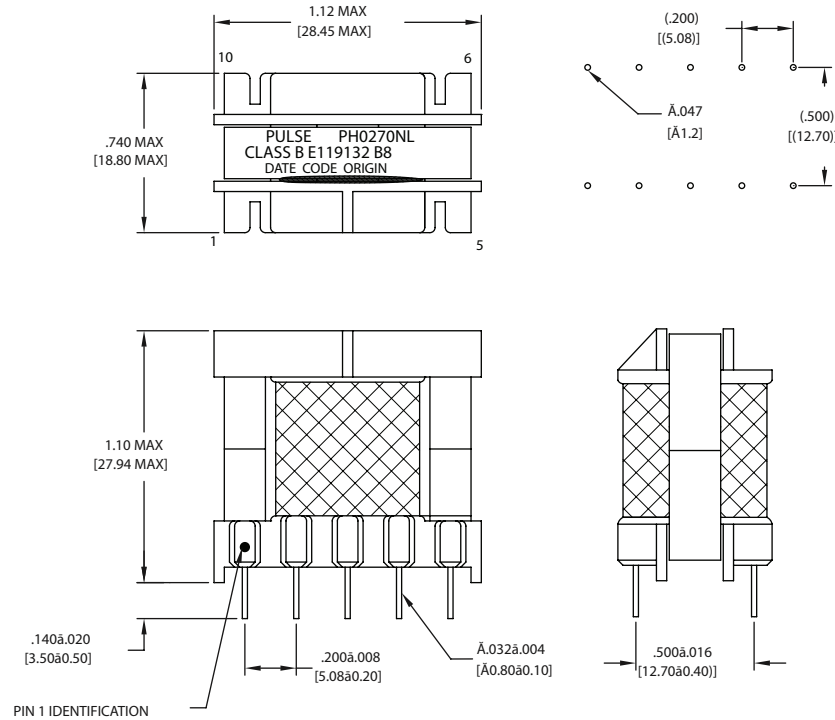
Switch Mode Transformer for AC/DC offline Applications

EE16H, EE16V, EF20H and EF25V Platforms



Mechanical

PH0270NL



For More Information

Pulse Worldwide Headquarters

15255 Innovation Drive Ste 100
San Diego, CA 92128
U.S.A.

Pulse Europe

Pulse Electronics GmbH
Am Rottland 12
58540 Meinerzhagen
Germany

Pulse China Headquarters

Pulse Electronics (Shenzhen) CO., LTD
D708, Shenzhen Academy of
Aerospace Technology,
The 10th Keji South Road,
Nanshan District, Shenzhen, P.R.
China 518057

Pulse North China

Room 2704/2705
Super Ocean Finance Ctr.
2067 Yan An Road West
Shanghai 200336
China

Pulse South Asia

3 Fraser Street
0428 DUO Tower
Singapore 189352

Pulse North Asia

1F, No.111
Xiyuan Road
Zhongli District
Taoyuan City 32057
Taiwan (R.O.C)

Tel: 858 674 8100
Fax: 858 674 8262

Tel: 49 2354 777 100
Fax: 49 2354 777 168

Tel: 86 755 33966678
Fax: 86 755 33966700

Tel: 86 21 62787060
Fax: 86 2162786973

Tel: 65 6287 8998
Fax: 65 6280 0080

Tel: 886 3 4356768
Fax: 886 3 4356820

Performance warranty of products offered on this data sheet is limited to the parameters specified. Data is subject to change without notice. Other brand and product names mentioned herein may be trademarks or registered trademarks of their respective owners. © Copyright, 2018. Pulse Electronics, Inc. All rights reserved.