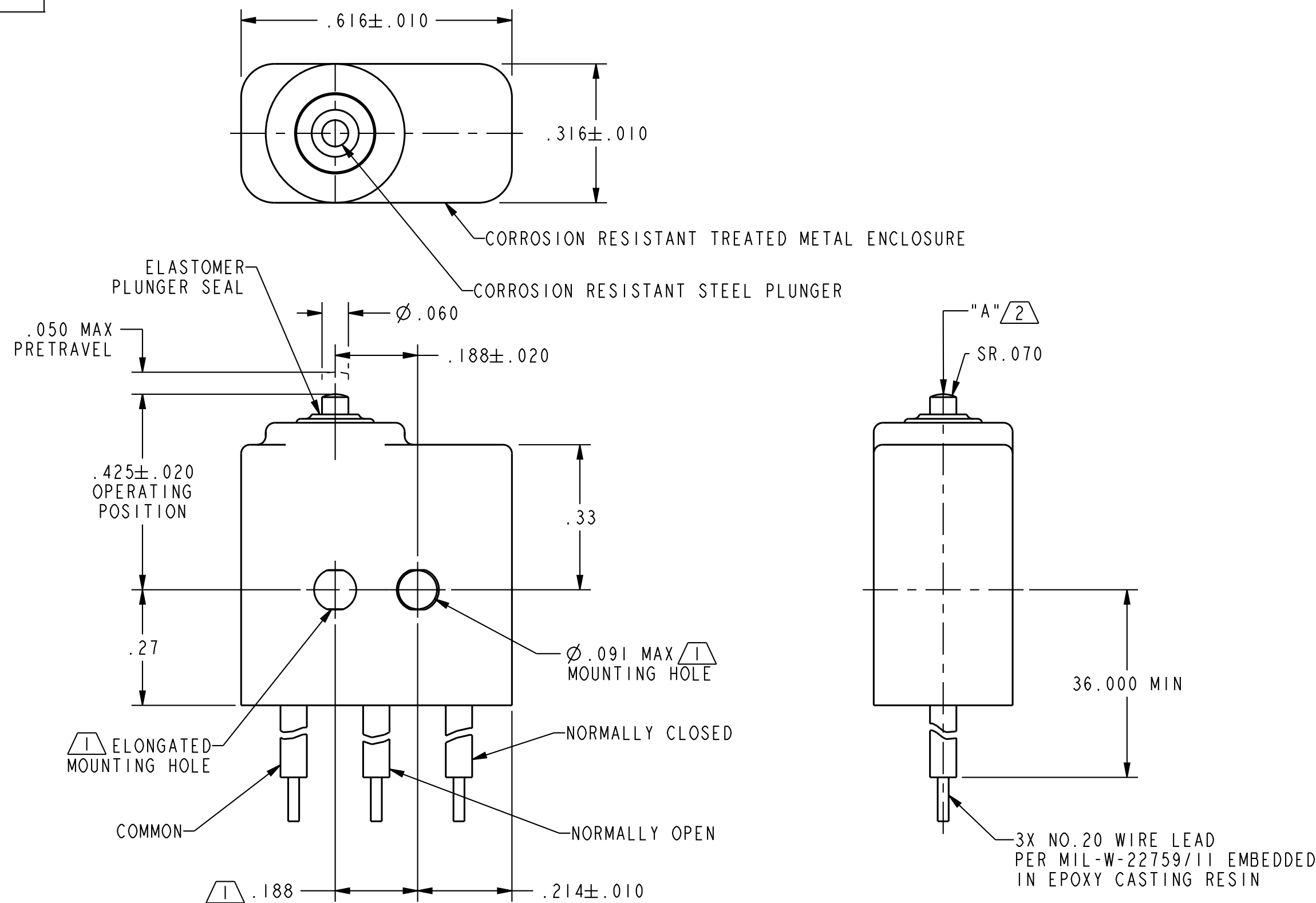


PART NUMBER

1XE1-3

REVISION HISTORY

REV	DOCUMENT	DESCRIPTION	CHGD BY	DATE	APPROVED
5	0110496	REDRAWN WITH CHANGE	RH	2014-05-19	D. TRETTER



NOTES:

- 1 - MOUNTING HOLES WILL ACCEPT Ø.087 MAX PINS OR SCREWS ON Ø.188 ± .002 CENTERS
- 2 - ACTUATION IN LINE WITH ARROW "A" IS RECOMMENDED
- 3 - WEIGHT OF SWITCH ONLY IS .16 OZ MAX. WEIGHT OF SWITCH WITH WIRE LEADS IS 1.75 OZ MAX
- 4 - MTF

	MTTF (HOURS/FAILURE)	MTTFd (HOURS/FAILURE)
RESISTIVE LOAD	228335	228335
RESISTIVE LOAD (50% DERATED)	737074	737074
INDUCTIVE LOAD	228335	228335
INDUCTIVE LOAD (50% DERATED)	737074	737074

MTTF CALCULATION ARE BASED ON MIL-HDBK-217F, NOTICE 2, CANNON, LAUNCH (CL) ENVIRONMENT. ACTUAL MTF MAY VARY BASED ON APPLICATION AND ENVIRONMENTAL CONDITIONS

PERFORMANCE DETAILS:

STANDARD:	CONFORMS TO MIL-PRF-8805/32 (EXCEPT AS NOTED)	VALUE
ALTITUDE	MIL-PRF-8805, METHOD 4.7.30	50,000 FEET
DIELECTRIC STRENGTH	MIL-PRF-8805, METHOD 4.7.4	1000 vrms, 500µA LEAKAGE MAX.
ELECTRICAL ENDURANCE	MIL-PRF-8805, METHOD 4.7.30	25,000 CYCLES
INSULATION RESISTANCE	MIL-PRF-8805, METHOD 4.7.5	500 VDC, 1000 MΩ MIN
MARKING VISIBILITY	MIL-PRF-8805, METHOD 4.7.16	
MECHANICAL ENDURANCE	MIL-PRF-8805, METHOD 4.7.25	25,000 CYCLES
MOISTURE RESISTANCE	MIL-PRF-8805, METHOD 4.7.15	10 DAY TEST
OVERLOAD CYCLING	MIL-PRF-8805, METHOD 4.7.29	
SALT SPRAY	MIL-PRF-8805, METHOD 4.7.17	96 HOUR TEST
SEAL	MIL-PRF-8805, METHOD 4.7.3.2	SYMBOL 3, WATERTIGHT
SHOCK-SAWTOOTH	MIL-PRF-8805, METHOD 4.7.13	100 G's, 6 MILLISECONDS (10µSEC)
TEMPERATURE RANGE	MIL-PRF-8805, METHOD 4.7.25 & 4.7.30	-55°C TO +85°C
TEMPERATURE RISE	MIL-PRF-8805, METHOD 4.7.30	+50°C MAX @ RATED RESISTIVE LOAD
VIBRATION-SINUSOIDAL	MIL-PRF-8805, METHOD 4.7.12	15 G's, 10-2000 HZ (10µSEC)

CHARACTERISTICS	ELECTRICAL DATA	UNLESS OTHERWISE SPECIFIED DIMENSIONS ARE IN INCHES DECIMAL TOL NO PLACE --- 1 PLACE --- ±.030 2 PLACE --- ±.015 3 PLACE --- ±.005 ANGULAR TOL - CHAMFER -	THIRD ANGLE PROJECTION	Honeywell				
OPERATING FORCE----- 5-17 OZ	CONTACT ARRANGEMENT S P D T			TITLE <b>SWITCH - BASIC</b>				
RELEASE FORCE----- 4 OZ MIN	28 VOLTS DC RATING			SIZE <b>C</b>	CAGE CODE -	DWG NO <b>1XE1-3</b>	TYPE <b>I</b>	REV <b>5</b>
RELEASE TRAVEL----- .004 MIN	INDUCTIVE --- SEA LEVEL - 4 AMP 50,000 FT - 2.5 AMP			SCALE 3:1	REF WT: SEE NOTE 3	SHEET 1 of 1	HONEYWELL CONFIDENTIAL	
DIFFERENTIAL TRAVEL----- .005 MAX	RESISTIVE --- SEA LEVEL - 7 AMP 50,000 FT - 7 AMP			RELEASE DATE 2014-05-19	DRW: H. RAVIKIRAN 2014-05-08	QA: J. BALDAZZI 2014-05-19	THIS DOCUMENT CONTAINS PROPRIETARY INFORMATION AND SUCH INFORMATION MAY NOT BE DISCLOSED TO OTHERS FOR ANY PURPOSE, NOR USED FOR MANUFACTURING PURPOSES WITHOUT WRITTEN PERMISSION FROM HONEYWELL	
OVERTRAVEL----- .004 MIN	MAXIMUM INRUSH ----- 24 AMP			COMPUTER GENERATED DRAWING: PRO/ENGINEER	CHK: H. CHANDRA 2014-05-19			