

ATLANTIC VERSION TERMINATOR INTERFACE ADAPTER	PART NUMBER	REVISION	DESCRIPTION	FEED TYPE	APPLICATOR STYLE CONVERSION CHART						
					CONVERT TO	PART NUMBERS REQUIRED					
	2151865-1	E	FINE CRIMP HEIGHT ADJUST	MECHANICAL	PNEUMATIC FEED	2119950-1	1338685-1	5-18022-5	2119641-1	2119799-1	2063440-1
	2151865-2	E	FINE CRIMP HEIGHT ADJUST	PNEUMATIC	SERVO LATCH PLATE	2119951-1	-	8-2151865-5	1901094-3	1-1752354-4	2168400-6 (QUANTITY 2)
					SMART APPLICATOR	2161326-1	-	8-2151865-4	-	-	-
					MECHANICAL FEED	2119949-1	1338685-1	5-18022-5	2119653-1	-	-
	2151865-5	E	FINE CRIMP HEIGHT ADJUST	SERVO LATCH PLATE ⁴	SERVO LATCH PLATE	2119951-1	-	8-2151865-5	1901094-3	1-1752354-4	2168400-6 (QUANTITY 2)
					SMART APPLICATOR	2161326-1	-	8-2151865-4	-	-	-
	2151865-6	E	NON-CRIMP HEIGHT ADJUST	SERVO LATCH PLATE ⁴	-	-	-	-	-	-	-
2151865-7	E	FINE CRIMP HEIGHT ADJUST	NONE	-	-	-	-	-	-	-	-
7-2151865-7	D	CRIMP TOOLING KIT	-	-	-	-	-	-	-	-	-

APPLICATOR DATA		
CRIMP	SIZE	TYPE
WIRE	1.27 mm [.050]	F
INSUL	1.45 mm [.057]	F

APPLICATOR INSTRUCTIONS
408-10389

TERMINAL DATA: HIROSE TERMINAL HIROSE CRIMP SPECIFICATION	
TERMINAL NAME: CRIMPING CONTACT for SOCKET	
WIRE STRIP LENGTH 1.70-2.30 mm [.067-.091 IN]	INSULATION DIAMETER RANGE Ø1.20-1.45 mm [.047-.057 IN]
TERMINAL APPLICATION SPECIFICATION 039527-5-11 Rev -	
TERMINALS APPLIED ³	
TE TERMINAL	HIROSE TERMINAL
1572122-1	DF11-22SCF
TE TERMINAL	HIROSE TERMINAL
1572122-2	DF11-22SCFA

WIRE SIZE	CRIMP HEIGHT mm [INCH]	CRIMP HEIGHT REFERENCE SETTING
22 AWG	0.67 +/- 0.03 [.026 +/- .001]	9.5

- ¹ RECOMMENDED SPARE PARTS
- ² GREASE BEARING SURFACES LIGHTLY
- 3. LUBRICATE DAILY PER THE APPLICATOR INSTRUCTION SHEET SUPPLIED WITH THE APPLICATOR.
- ⁴ APPLICATOR SPECIFIC DATA TO BE ENTERED INTO BLANK MEMORY CHIP AT ASSEMBLY. SEE BELOW FOR PART NUMBER:
MECHANICAL FEED WITH "SMART APPLICATOR" CONVERSION: 8-2151865-4
PNEUMATIC FEED WITH "SMART APPLICATOR" CONVERSION: 8-2151865-4
SERVO FEED WITH "FINE CRIMP HEIGHT ADJUST": 8-2151865-5
SERVO FEED WITH "NON-CRIMP HEIGHT ADJUST": 8-2151865-6
- 5. ADJUSTMENT OF THE STRIPPER MAY BE REQUIRED WHEN MOVING THE APPLICATOR BETWEEN BENCH AND LEADMAKER APPLICATIONS.
- ⁶ APPLY PART NUMBER 1-23419-5 LOCTITE TO THREADS OF ITEMS 62 & 180. APPLY PART NUMBER 2-23419-6 LOCTITE TO THREADS OF ITEMS 242. FOR -6 ONLY APPLY PART NUMBER 1-23419-5 LOCTITE TO THREADS OF ITEM 37 & 180.
- ⁷ GREASE THREADS, GROOVE AND O-RING ON ITEMS 35 & 252.
- ⁸ MAGNET, ITEM 166 MUST BE ORIENTED CORRECTLY IN ORDER TO PROPERLY ACTUATE THE COUNTER.
- ⁹ CRIMP HEIGHT REFERENCE SETTING WAS THE SETTING USED WHEN THE APPLICATOR WAS QUALIFIED AT THE FACTORY. ADJUSTMENT MAY BE NECESSARY WHEN RUNNING APPLICATOR IN THE FIELD.
- ¹⁰ SPARE FEED CAM STORAGE LOCATION REFER TO INSTRUCTION SHEET FOR ADDITIONAL INFORMATION.
- ¹¹ TO CONVERT THE APPLICATOR TO A NON-CARRIER CUTTING STYLE, REMOVE ITEM 13 AND ATTACH TO THE LOCATION ON THE BACK SIDE OF THE HOUSING. REFER TO INSTRUCTION SHEET FOR ADDITIONAL INFORMATION.
- ¹² WHEN ASSEMBLING A NON CRIMP HEIGHT ADJUST APPLICATOR (-6) USE SHIMS FROM ITEM 260 TO ACHIEVE A NOMINAL SHIM HEIGHT OF 5.13.
- ¹³ TERMINAL LUBRICANT IS RECOMMENDED.

***WARNING**
ON INSTALLATION, SET WIRE DISC, ITEM 40 TO LARGEST WIRE SIZE SETTING. USE OF SETTINGS BELOW MINIMUM REQUIRED CRIMP HEIGHT SETTING WILL CAUSE DAMAGE TO CRIMP TOOLING.

-	-	1	-	-	-	2119957-2	APPLICATOR SHIM PACK	260				
-	1	-	1	1	1	8-21084-0	O-RING, .676 ID, .070 DIA. MAT.	252				
-	-	-	-	1	-	2119640-1	PUSH ROD, AIR FEED	250				
-	-	-	-	1	-	2079988-1	BUSHING, LCH5-12, MISUMI	249				
-	-	-	-	1	-	2119641-1	FEED CAM, AIR FEED	248				
-	1	-	1	1	1	2119798-1	DETENT PIN	247				
-	1	-	1	1	1	1-22279-3	SPRING, COMPRESSION	246				
-	-	1	-	-	-	2119758-1	RAM, AMP STYLE, SIDE FEED, NON-ADJ.	245				
-	1	1	1	1	1	2119082-4	CAM, SNAIL, INSULATION ADJUSTMENT	244				
-	1	1	1	1	1	2079764-1	WASHER, WAVE SPRING, CREST-TO-CREST	243				
-	1	1	1	1	1	2119083-1	RETAINER, INSULATION DIAL	242				
-77	-7	-6	-5	-2	-1	PART NO	DESCRIPTION	ITEM NO				

ATLANTIC VERSION
Shown on sheets 1 of 4 & 2 of 4
(Pacific version shown on sheets 3 of 4 & 4 of 4)

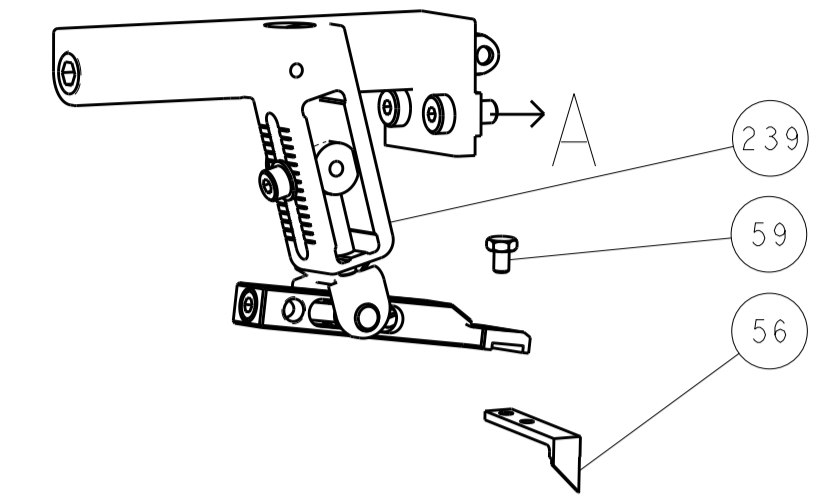
SET UP GAUGE	LOC	DIST	REVISIONS			
2119599-1	A	66	REV	DATE	BY	APPV
			C	ECR-15-010634	15JUL2015	MR TE
			D	ECR-15-017027	23NOV2015	JT TE
			E	ECR-16-004774	01APR2016	JH TE
			E1	ECR-16-009734	06JUL2016	MZ KZ

-	1	1	1	1	1	7-18023-7	SCR, SKT HD CAP M3 X 4.0	241				
-	-	2	2	-	-	2168400-6	SHCS, LOW HEAD, RoHS, M5 X 16	240				
-	-	-	-	-	1	2119580-1	MECHANICAL FEED ASSEMBLY	239				
-	-	-	-	-	1	2063440-1	AIR FEED MODULE	238				
-	-	1	1	-	-	2119740-2	TAG, IDENTIFICATION	213				
-	-	1	1	-	-	1901094-3	SPACER, FEEDER	198				
⁶	-	1	1	1	1	1-1752354-4	STANDOFF, HOLD-DOWN	180				
-	1	1	1	1	1	993111-1	PIN, SLOTTED SPRING 3.0 X 20.0	177				
-	1	1	1	1	1	8-22280-7	SPRING, COMPRESSION	176				
-	1	1	1	1	1	1752353-2	GUIDE PIN, HOLDDOWN	175				
-	1	1	1	1	1	1901680-2	GUIDE PIN, HOLDDOWN	174				
-	-	-	-	-	2	21045-3	RING, RETAIN, EXTERN, 3/16 CRESCENT	172				
⁸	-	1	1	1	1	994969-1	MAGNET, RARE EARTH HIGH ENERGY	166				
-	REF	REF	REF	REF	REF	994970-2	COUNTER, MAGNETIC	164				
-	-	-	-	1	-	240638-1	SPRING, FEED FINGER	163				
-	-	-	-	1	-	3-23627-7	PIN, RETAIN, GRVD, 3/16 X .854	137				
-	-	-	-	1	-	2119799-1	HOLDER, FEED FINGER, AF	136				
-	-	REF	REF	-	-	SEE NOTE 4	MEMORY CHIP, PROGRAMMED	135				
-	-	1	1	-	-	1633743-1	SERVO FEED LATCH ASM	133				
-	1	1	1	1	1	1-18028-2	WASHER, FLAT, REG M4	119				
-	-	REF	REF	-	-	2119944-1	FEED FINGER ASSEMBLY, SF	117				
-	1	1	1	1	1	2119955-1	ASSY, LUBRICATOR, SIDE FEED	113				
-	1	1	1	1	1	1-455888-1	SPACER, CRIMPER	82				
-	1	1	1	1	1	22278-8	SPRING, COMPRESSION	77				
-	1	1	1	1	1	854769-4	HOLDER, INS	74				
-	1	1	1	1	1	2119956-1	DOCUMENTATION PACKAGE	71				
-	1	1	1	1	1	2119791-9	DEPRESSOR, WIRE	70				
-	1	-	-	1	1	2119740-1	TAG, IDENTIFICATION	67				
-	2	2	2	2	2	2168078-1	SCREW, DRIVE, RH, RoHS, 2 x .188	66				
⁶	-	1	-	1	1	2119793-1	LIMITER, ADJUSTMENT BOLT	63				
-	3	-	3	3	3	992763-5	SCR, SET, SOC, CONE POINT, M3 X 4.0	62				
-	1	1	1	1	1	2079383-4	SCR, BHSC, RoHS (M4 X 8)	60				
-	-	-	-	1	1	5-18022-5	SCR, HEX HD CAP, M4 X 6.0	59				
-	1	1	1	1	1	21028-2	PIN, SLOTTED SPRING .062 X .250	58				
-	-	-	-	1	1	1338685-1	PAWL, FEED	56				
-	4	4	4	4	4	2168400-1	SHCS, LOW HEAD, RoHS, M4 X 12	54				
-	2	2	2	2	2	1-2079383-0	SCR, BHSC, RoHS (M3 X 6)	53				
-	1	1	1	1	1	1-5018030-0	NUT, HEX, REG, RoHS, M3.5	52				
-	1	1	1	1	1	1901681-8	HOLDDOWN, TERMINAL	51				
-	1	1	1	1	1	1-1633764-5	HOLD DOWN, TERMINAL	50				
-	-	-	-	1	2	18023-9	SCR, SKT HD CAP M4 X 6.0	49				
-	-	-	-	-	1	2119652-1	FEED CAM, PRE FEED	48				
-	-	-	-	-	1	2119653-1	FEED CAM, POST FEED	47				
-	1	1	1	1	1	2119656-9	APPLICATOR BASIC ASSEMBLY, SF	46				
-	1	-	1	1	1	2119370-1	RAM, AMP STYLE, SIDE FEED	44				
-	1	1	1	1	1	2079383-7	SCR, BHSC, RoHS (M8 X 25)	41				
-	1	-	1	1	1	2119645-1	DISC, NUMBERED FA WIRE ADJUSTMENT	40				
-	1	-	1	1	1	2119957-1	APPLICATOR SHIM PACK	39				
-	1	1	1	1	1	2119644-1	RAM WASHER, PRECISION	38				
⁶	-	1	1	1	1	2119085-1	FA HEAD, ATLANTIC STYLE	37				
⁷	-	1	-	1	1	2119092-1	BOLT, ADJUSTMENT	35				
-	1	1	1	1	1	2-1752356-5	SUPPORT, TERMINAL	34				
-	2	2	2	2	2	2079383-5	SCR, BHSC, RoHS (M4 X 20)	33				
-	1	1	1	1	1	2161328-1	HEX HEAD, FLANGED, M5 X 8mm LONG	32				
-	1	1	1	1	1	1320908-6	SPACER, STRIP GUIDE	30				
-	1	1	1	1	1	2119959-1	ASSEMBLY, STRIP GUIDE	29				
-	1	1	1	1	1	1320928-2	STRIP GUIDE	24				
-	1	1	1	1	1	2168083-2	SCR, SKT HD CAP, RoHS, M4 X 8.0	21				
-	1	1	1	1	1	1-18028-2	WASHER, FLAT, REG M4	20				
-	1	1	1	1	1	2119533-4	STRIPPER, SIDE FEED	19				
¹	-	1	1	1	1	2119806-1	INSERT, SHEAR	13				
-	1	1	1	1	1	3-22280-3	SPRING, COMPRESSION	12				
-	1	1	1	1	1	1-356885-4	STOP, SHEAR	11				
¹	-	1	1	1	1	2119805-1	SHEAR HOLDER, FRONT	10				
¹	-	1	1	1	1	1803095-3	FLOATING SHEAR, FRONT	9				
¹	1	1	1	1	1	1803335-3	ANVIL, COMBINATION	8				
-	-	-	-	-	-	-	-	7				
-	-	-	-	-	-	-	-	6				
-	1	1	1	1	1	2119780-2	DEPRESSOR, SHEAR	5				
-	1	1	1	1	1	2-238011-0	BLOCK, CRIMPER SPACER	4				
¹	1	1	1	1	1	1-1803326-3	CRIMPER, INSULATION F	3				
-	1	1	1	1	1	455888-6	SPACER, CRIMPER	2				
¹	1	1	1	1	1	1-1803323-1	CRIMPER, WIRE PREMIUM	1				
-77	-7	-6	-5	-2	-1	PART NO	DESCRIPTION	ITEM NO				

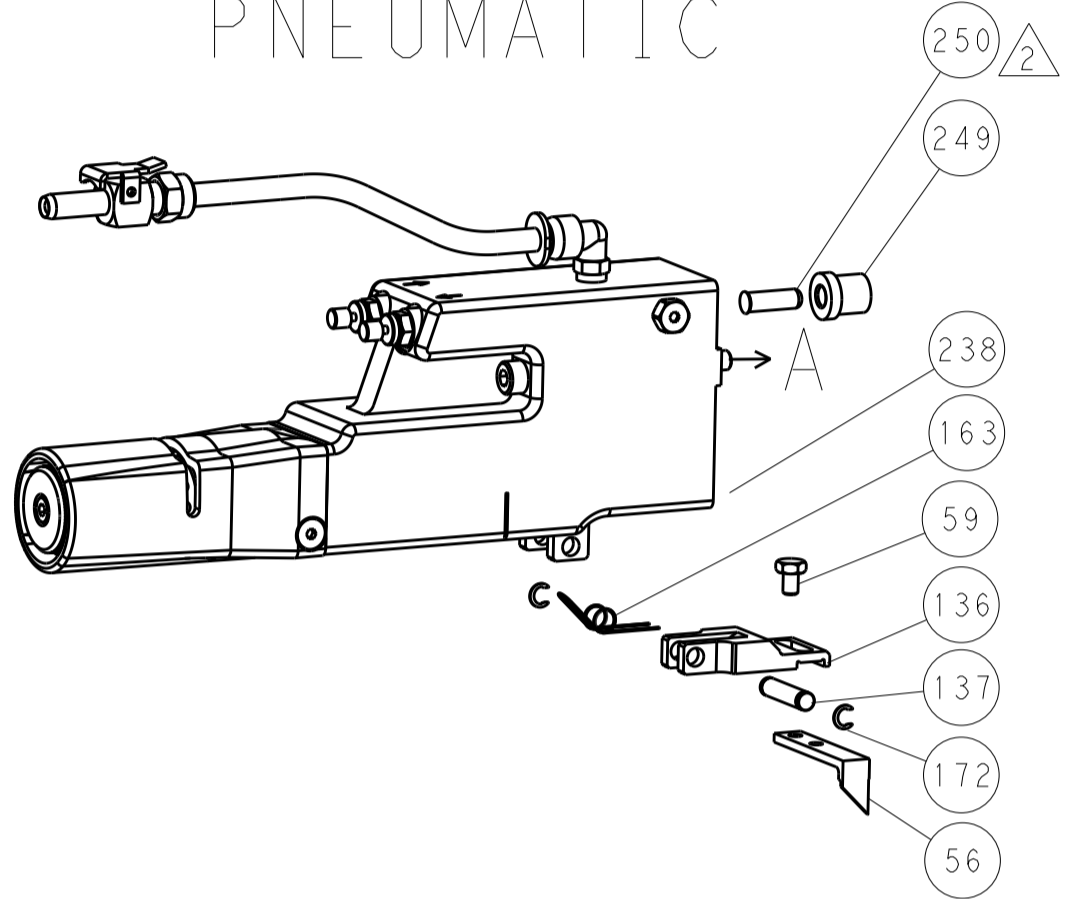
DIMENSIONS:		TOLERANCES UNLESS OTHERWISE SPECIFIED:		APPROVED:		DATE:		DRAWING NO:		SHEET:		REV:	
mm	0 PLC	±		DRW	R. O. WILSON	31 JAN 2013							
	1 PLC	±		CHK	K. J. STAKEM	01 FEB 2013							
	2 PLC	±		APPV	T. L. ELBIN	01 FEB 2013							
	3 PLC	±											
	4 PLC	±											
	5 PLC	±											
	ANGLES	±											
	FINISH	±											
MATERIAL				WEIGHT									
				CUSTOMER DRAWING									

REVISONS		DATE	OWN	APVD
LOC	DIST			
A	66			
P	LTN	DESCRIPTION		
		SEE SHEET 1		

FEED TYPE MECHANICAL



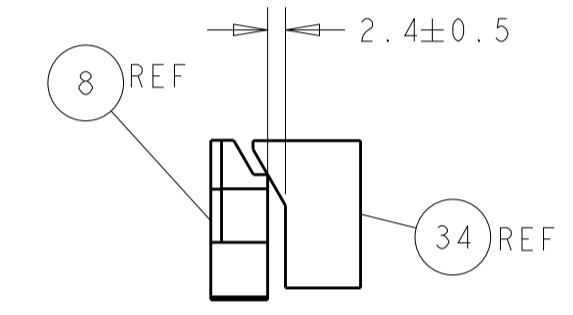
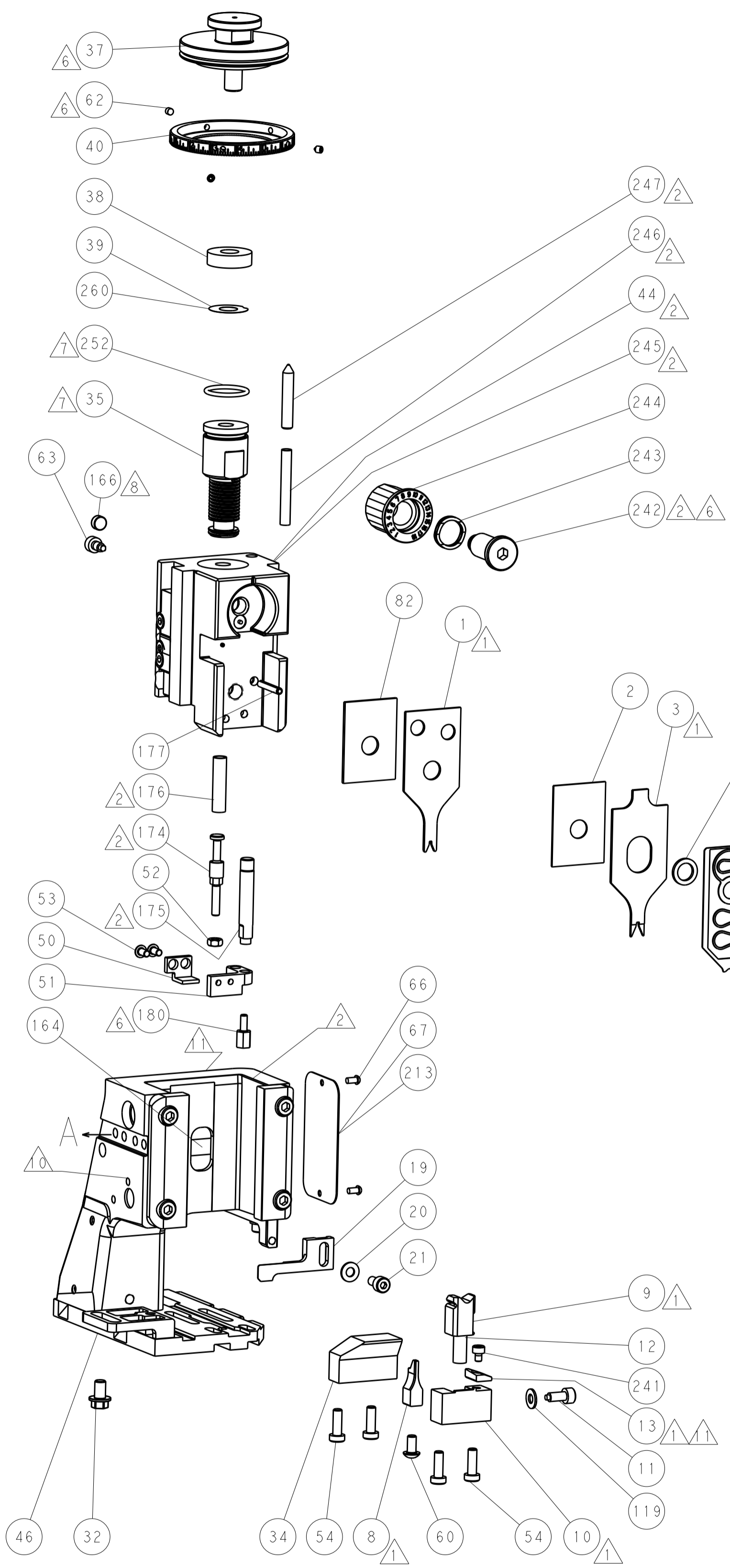
PNEUMATIC



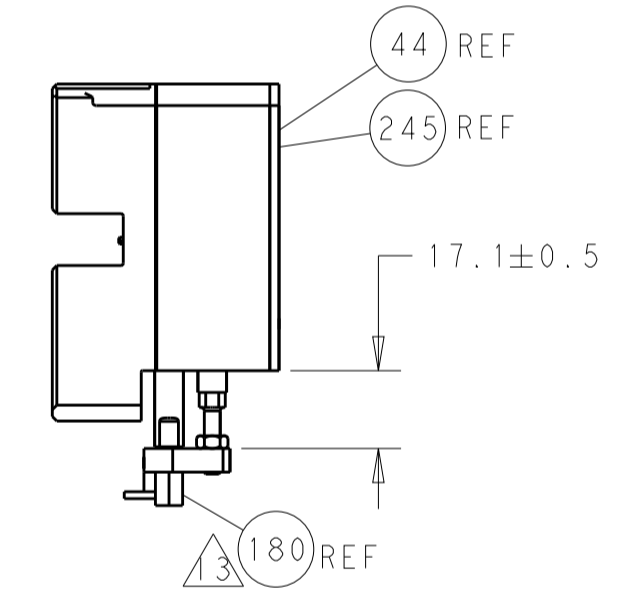
SERVO LATCH PLATE



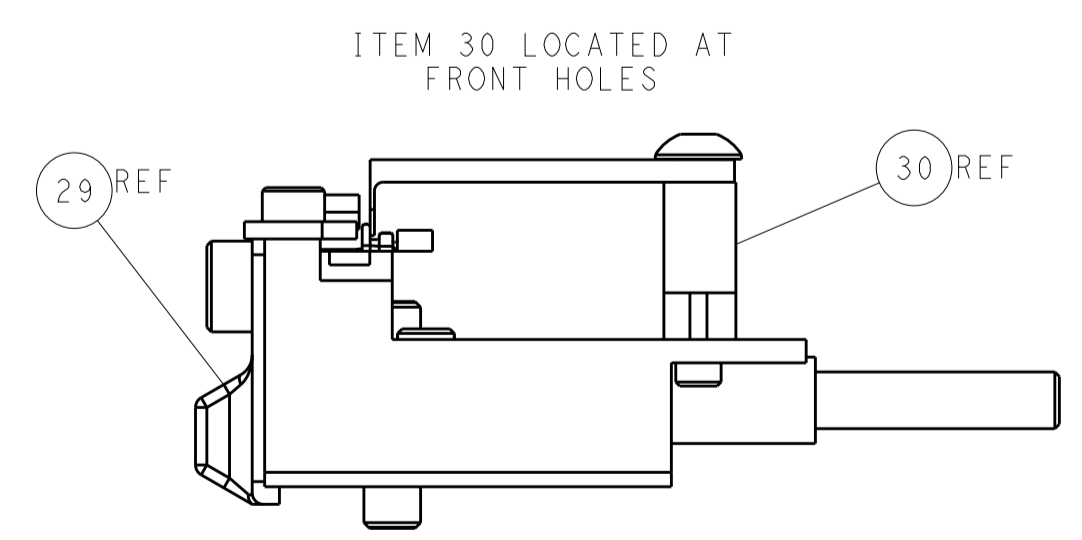
CAM POSITIONS



TERMINAL SUPPORT LOCATION



HOLDDOWN SET-UP



FEED TRACK POSITION GUIDE BY INSULATION BARREL

ATLANTIC VERSION
 Shown on sheets 1 of 4 & 2 of 4
 (Pacific version shown on sheets 3 of 4 & 4 of 4)

DIMENSIONS:		TOLERANCES UNLESS OTHERWISE SPECIFIED:		DWG: R. Q. WILSON 31 JAN 2013		TE Connectivity	
mm	0 PLC ±	1 PLC ±	2 PLC ±	3 PLC ±	4 PLC ±	APVD: K. J. STAKEM 01 FEB 2013	Harrisburg, PA 17105-3608
MATERIAL:		FINISH:		NAME: Ocean Side Feed Applicator		RESTRICTED TO:	
CUSTOMER DRAWING		SCALE: 1:2		SHEET 2 OF 4		REV E1	

PACIFIC VERSION TERMINATOR INTERFACE ADAPTER	PART NUMBER	REVISION	DESCRIPTION	FEED TYPE	APPLICATOR STYLE CONVERSION CHART						
					CONVERT TO	PART NUMBERS REQUIRED					
	2-2151865-1	E	FINE CRIMP HEIGHT ADJUST	MECHANICAL	PNEUMATIC FEED	2119950-1	1338685-1	5-18022-5	2119641-2	2119799-1	2063440-1
					SERVO LATCH PLATE	2119951-1	-	8-2151865-5	1901094-3	1-1752354-4	2168400-6 (QUANTITY 2)
					SMART APPLICATOR	2161326-1	-	8-2151865-4	-	-	-
	2-2151865-2	E	FINE CRIMP HEIGHT ADJUST	PNEUMATIC	MECHANICAL FEED	2119949-1	1338685-1	5-18022-5	2119653-2	-	-
					SERVO LATCH PLATE	2119951-1	-	8-2151865-5	1901094-3	1-1752354-4	2168400-6 (QUANTITY 2)
					SMART APPLICATOR	2161326-1	-	8-2151865-4	-	-	-
	2-2151865-5	E	FINE CRIMP HEIGHT ADJUST	SERVO LATCH PLATE	MECHANICAL FEED	2119949-1	1338685-1	5-18022-5	2119653-2	-	-
					PNEUMATIC FEED	2119950-1	1338685-1	5-18022-5	2119641-2	2119799-1	2063440-1
	2-2151865-7	E	FINE CRIMP HEIGHT ADJUST	NONE	-	-	-	-	-	-	-
	7-2151865-7	D	CRIMP TOOLING KIT	-	-	-	-	-	-	-	-

APPLICATOR DATA		
CRIMP	SIZE	TYPE
WIRE	1.27 mm [.050]	F
INSUL	1.45 mm [.057]	F
APPLICATOR INSTRUCTIONS 408-10389		

TERMINAL DATA: HIROSE TERMINAL HIROSE CRIMP SPECIFICATION	
TERMINAL NAME: CRIMPING CONTACT for SOCKET	
WIRE STRIP LENGTH 1.70-2.30 mm [.067-.091 IN]	INSULATION DIAMETER RANGE Ø1.20-1.45 mm [.047-.057 IN]
TERMINAL APPLICATION SPECIFICATION 039527-5-11 Rev -	
TERMINALS APPLIED	
TE TERMINAL 1572122-1	HIROSE TERMINAL DF11-22SCF
TE TERMINAL 1572122-2	HIROSE TERMINAL DF11-22SCFA

WIRE SIZE	CRIMP HEIGHT mm [INCH]	CRIMP HEIGHT REFERENCE SETTING
22 AWG	0.67+/-0.03 [.026+/-0.001]	9.5

- RECOMMENDED SPARE PARTS
- GREASE BEARING SURFACES LIGHTLY
- LUBRICATE DAILY PER THE APPLICATOR INSTRUCTION SHEET SUPPLIED WITH THE APPLICATOR.
- APPLICATOR SPECIFIC DATA TO BE ENTERED INTO BLANK MEMORY CHIP AT ASSEMBLY. SEE BELOW FOR PART NUMBER:
 MECHANICAL FEED WITH "SMART APPLICATOR" CONVERSION: 8-2151865-4
 PNEUMATIC FEED WITH "SMART APPLICATOR" CONVERSION: 8-2151865-4
 SERVO FEED WITH "FINE CRIMP HEIGHT ADJUST": 8-2151865-5
- ADJUSTMENT OF THE STRIPPER MAY BE REQUIRED WHEN MOVING THE APPLICATOR BETWEEN BENCH AND LEADMAKER APPLICATIONS.
- APPLY PART NUMBER 1-23419-5 LOCTITE TO THREADS OF ITEMS 62 & 180.
 APPLY PART NUMBER 2-23419-6 LOCTITE TO THREADS OF ITEMS 242.
- GREASE THREADS, GROOVE AND O-RING ON ITEMS 139 & 152.
- MAGNET MUST BE ORIENTED CORRECTLY IN ORDER TO PROPERLY ACTUATE THE COUNTER.
- CRIMP HEIGHT REFERENCE SETTING WAS THE SETTING USED WHEN THE APPLICATOR WAS QUALIFIED AT THE FACTORY. ADJUSTMENT MAY BE NECESSARY WHEN RUNNING APPLICATOR IN THE FIELD.
- SPARE FEED CAM STORAGE LOCATION REFER TO INSTRUCTION SHEET FOR ADDITIONAL INFORMATION.
- TO CONVERT THE APPLICATOR TO A NON-CARRIER CUTTING STYLE, REMOVE ITEM 13 AND ATTACH TO THE LOCATION ON BACK SIDE OF THE HOUSING. REFER TO INSTRUCTION SHEET FOR ADDITIONAL INFORMATION.
- TERMINAL LUBRICANT IS RECOMMENDED.

***WARNING**
 ON INSTALLATION, SET WIRE DISC, ITEM 40 TO LARGEST WIRE SIZE SETTING. USE OF SETTINGS BELOW MINIMUM REQUIRED CRIMP HEIGHT SETTING WILL CAUSE DAMAGE TO CRIMP TOOLING.

-	1	1	1	1	2119782-1	FINE ADJUST HEAD ASM, PACIFIC STYLE	251
-	-	-	1	-	2119640-1	PUSH ROD, AIR FEED	250
-	-	-	1	-	2079988-1	BUSHING, LCH5-12, MISUMI	249
-	1	1	1	1	1-22279-3	SPRING, COMPRESSION	246
-	1	1	1	1	2119082-4	CAM, SNAIL, INSULATION ADJUSTMENT	244
-	1	1	1	1	2079764-1	WASHER, WAVE SPRING, CREST-TO-CREST	243
-	1	1	1	1	2119083-1	RETAINER, INSULATION DIAL	242
-	1	1	1	1	7-18023-7	SCR, SKT HD CAP M3 X 4.0	241
-	-	2	-	-	2168400-6	SHCS, LOW HEAD, RoHS, M5 X 16	240
-77	-27	-25	-22	-21	PART NO	DESCRIPTION	ITEM NO

PACIFIC VERSION
 Shown on sheets 3 of 4 & 4 of 4
 (Atlantic version shown on sheets 1 of 4 & 2 of 4)

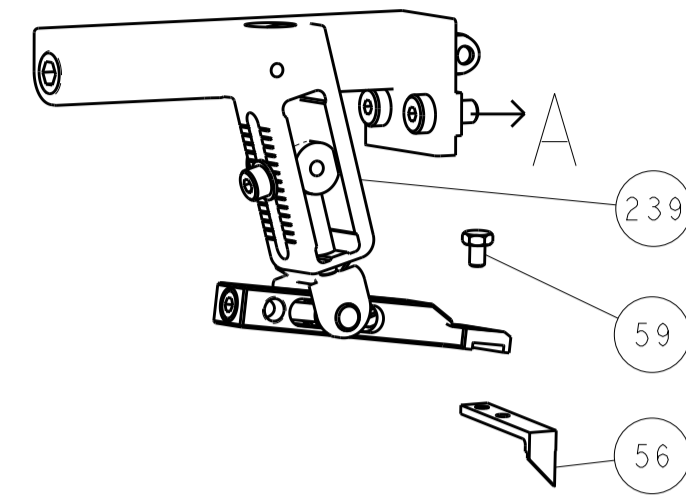
SET UP GAUGE	LOC	DIST	REVISIONS					
2119599-1	A	66	P	LTN	DESCRIPTION	DATE	OWN	APVD
-	-	-	-	-	SEE SHEET 1	-	-	-

-	-	-	-	1	2119580-1	MECHANICAL FEED ASSEMBLY	239
-	-	-	1	-	2063440-1	AIR FEED MODULE	238
-	-	1	-	-	2119740-2	TAG, IDENTIFICATION	213
-	-	1	-	-	1901094-3	SPACER, FEEDER	198
6	-	1	1	1	1-1752354-4	STANDOFF, HOLD-DOWN	180
-	1	1	1	1	993111-1	PIN, SLOTTED SPRING 3.0 X 20.0	177
-	1	1	1	1	8-22280-7	SPRING, COMPRESSION	176
-	1	1	1	1	1752353-2	GUIDE PIN, HOLDDOWN	175
-	1	1	1	1	1901680-2	GUIDE PIN, HOLDDOWN	174
-	-	-	2	-	21045-3	RING, RETAIN, EXTERN, 3/16 CRESCENT	172
8	-	1	1	1	994969-1	MAGNET, RARE EARTH HIGH ENERGY	166
-	REF	REF	REF	REF	994970-2	COUNTER, MAGNETIC	164
-	-	-	1	-	240638-1	SPRING, FEED FINGER	163
7	-	1	1	1	8-21084-1	O-RING, .801 ID, .070 DIA. MAT.	152
-	-	-	1	-	2119641-2	FEED CAM, AIR FEED	151
-	1	1	1	1	2119798-2	DETENT PIN	145
-	1	1	1	1	2079383-8	SCR, BHSC, RoHS (M4 X 16)	144
-	4	4	4	4	2168400-5	SHCS, LOW HEAD, RoHS, M4 X 20	143
-	-	-	-	1	2119653-2	FEED CAM, POST FEED	142
-	1	1	1	1	1-2119656-0	APPLICATOR BASIC ASSEMBLY, SF	141
-	1	1	1	1	2119650-1	RAM, ASIAN STYLE, SIDE FEED	140
7	-	1	1	1	2119092-2	BOLT, ADJUSTMENT	139
-	-	-	1	-	3-23627-7	PIN, RETAIN, GRVD, 3/16 X .854	137
-	-	-	1	-	2119799-1	HOLDER, FEED FINGER, AF	136
-	-	REF	-	-	SEE NOTE 4	MEMORY CHIP, PROGRAMMED	135
-	-	1	-	-	1633743-1	SERVO FEED LATCH ASM	133
-	1	1	1	1	1-18028-2	WASHER, FLAT, REG M4	119
-	-	REF	-	-	2119944-1	FEED FINGER ASSEMBLY, SF	117
-	1	1	1	1	2119955-1	ASSY, LUBRICATOR, SIDE FEED	113
-	1	1	1	1	1-455888-1	SPACER, CRIMPER	82
-	1	1	1	1	22278-8	SPRING, COMPRESSION	77
-	1	1	1	1	854769-4	HOLDER, INS	74
-	1	1	1	1	2119956-1	DOCUMENTATION PACKAGE	71
-	1	1	1	1	2119791-9	DEPRESSOR, WIRE	70
-	1	-	1	1	2119740-1	TAG, IDENTIFICATION	67
-	2	2	2	2	2168078-1	SCREW, DRIVE, RH, RoHS, 2 x .188	66
-	1	1	1	1	2119793-1	LIMITER, ADJUSTMENT BOLT	63
6	-	3	3	3	992763-5	SCR, SET, SOC, CONE POINT, M3 X 4.0	62
-	-	-	1	1	5-18022-5	SCR, HEX HD CAP, M4 X 6.0	59
-	1	1	1	1	21028-2	PIN, SLOTTED SPRING .062 X .250	58
-	-	-	1	1	1338685-1	PAWL, FEED	56
-	2	2	2	2	1-2079383-0	SCR, BHSC, RoHS (M3 X 6)	53
-	1	1	1	1	1-5018030-0	NUT, HEX, REG, RoHS, M3.5	52
-	1	1	1	1	1901681-8	HOLDDOWN, TERMINAL	51
-	1	1	1	1	1-1633764-5	HOLD DOWN, TERMINAL	50
-	-	-	1	2	18023-9	SCR, SKT HD CAP M4 X 6.0	49
-	-	-	-	1	2119652-1	FEED CAM, PRE FEED	48
-	1	1	1	1	2079383-7	SCR, BHSC, RoHS (M8 X 25)	41
-	1	1	1	1	2119645-1	DISC, NUMBERED FA WIRE ADJUSTMENT	40
-	1	1	1	1	2119957-1	APPLICATOR SHIM PACK	39
-	1	1	1	1	2119644-1	RAM WASHER, PRECISION	38
-	1	1	1	1	2-1752356-5	SUPPORT, TERMINAL	34
-	2	2	2	2	2079383-5	SCR, BHSC, RoHS (M4 X 20)	33
-	1	1	1	1	2161328-1	HEX HEAD, FLANGED, M5 X 8mm LONG	32
-	1	1	1	1	1320908-6	SPACER, STRIP GUIDE	30
-	1	1	1	1	2119959-1	ASSEMBLY, STRIP GUIDE	29
-	1	1	1	1	1320928-2	STRIP GUIDE	24
-	1	1	1	1	2168083-2	SCR, SKT HD CAP, RoHS, M4 X 8.0	21
-	1	1	1	1	1-18028-2	WASHER, FLAT, REG M4	20
-	1	1	1	1	2119533-4	STRIPPER, SIDE FEED	19
7	-	1	1	1	2119806-1	INSERT, SHEAR	13
-	1	1	1	1	3-22280-3	SPRING, COMPRESSION	12
-	1	1	1	1	1-356885-4	STOP, SHEAR	11
-	1	1	1	1	2119805-1	SHEAR HOLDER, FRONT	10
7	-	1	1	1	1803095-3	FLOATING SHEAR, FRONT	9
7	1	1	1	1	1803335-3	ANVIL, COMBINATION	8
-	-	-	-	-	-	-	7
-	-	-	-	-	-	-	6
-	1	1	1	1	2119780-2	DEPRESSOR, SHEAR	5
-	1	1	1	1	2-238011-0	BLOCK, CRIMPER SPACER	4
7	1	1	1	1	1-1803326-3	CRIMPER, INSULATION F	3
-	1	1	1	1	455888-6	SPACER, CRIMPER	2
7	1	1	1	1	1-1803323-1	CRIMPER, WIRE PREMIUM	1
-77	-27	-25	-22	-21	PART NO	DESCRIPTION	ITEM NO

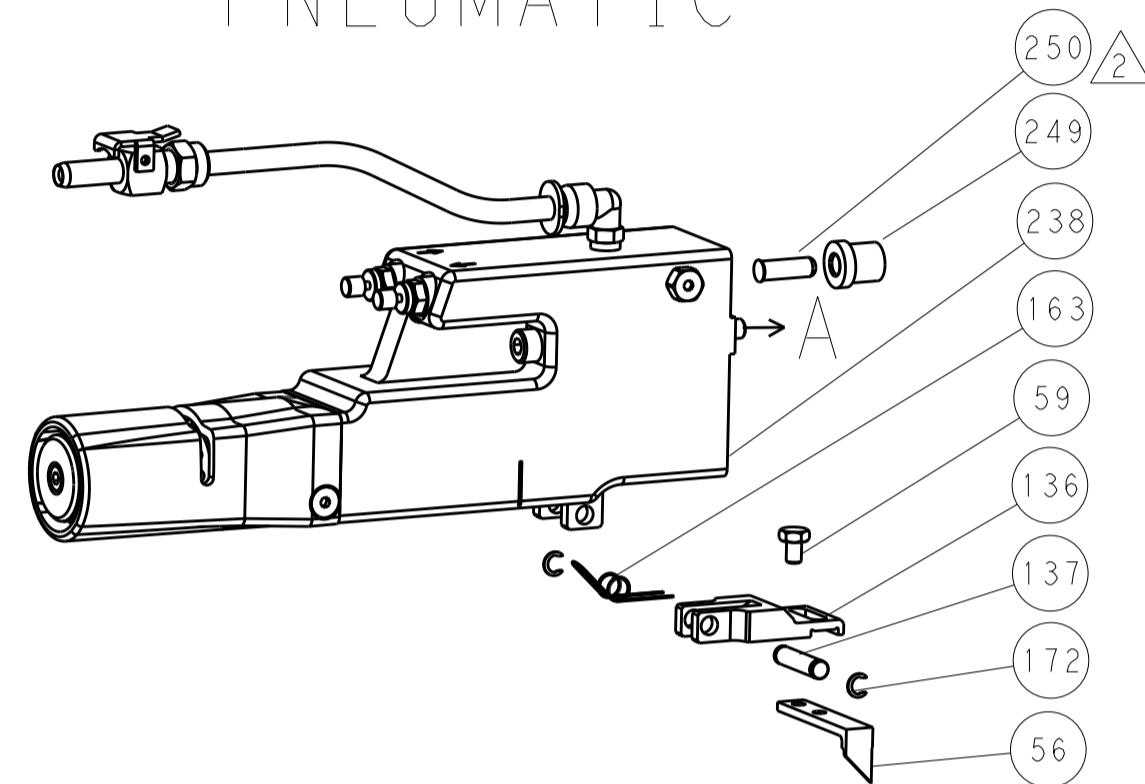
DIMENSIONS:		TOLERANCES UNLESS OTHERWISE SPECIFIED:		DATE		NAME	
mm	0 PLC ±	1 PLC ±	2 PLC ±	3 PLC ±	4 PLC ±	ANGLES	FINISH
MATERIAL				WEIGHT		CUSTOMER DRAWING	
SCALE 1:2				SHEET 3 OF 4		REV E1	

LOC	DIST	REV	DATE	BY	APPV
A	66				
REVISIONS			DATE	BY	APPV
- SEE SHEET 1			-	-	-

FEED TYPE MECHANICAL



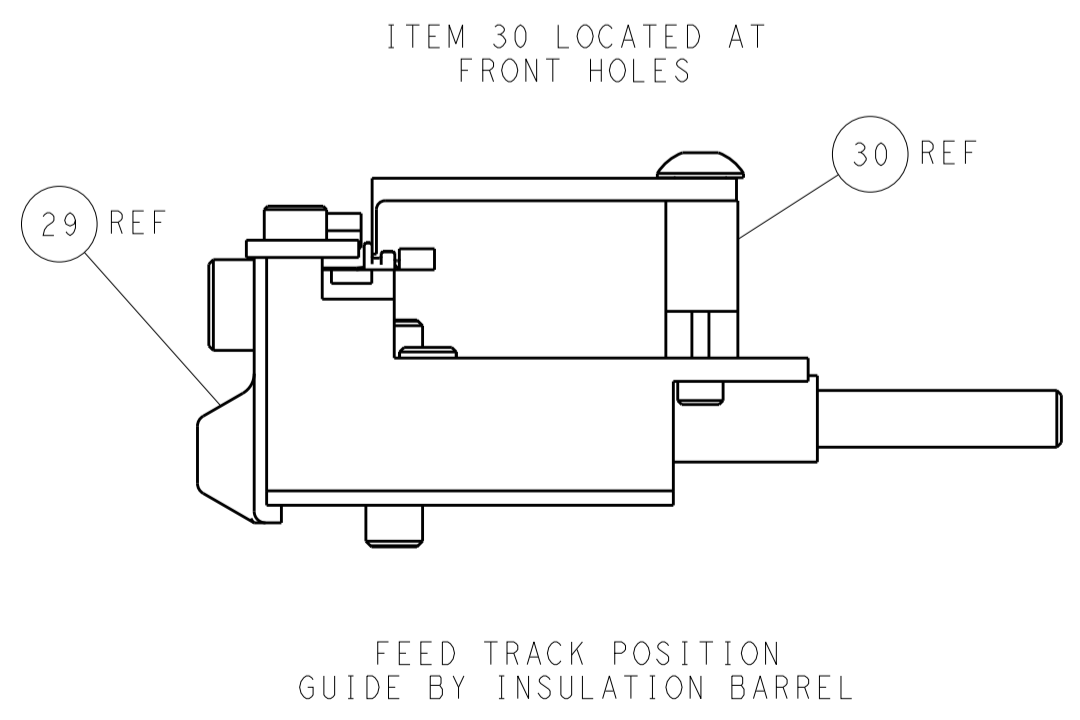
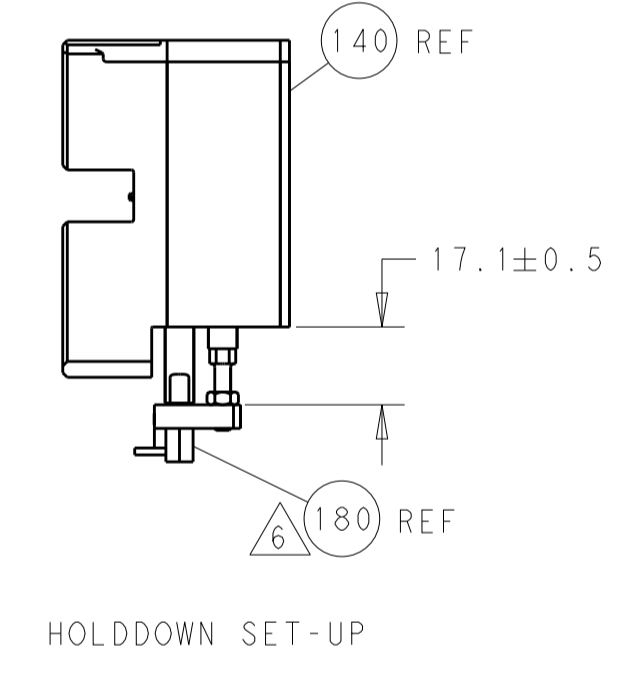
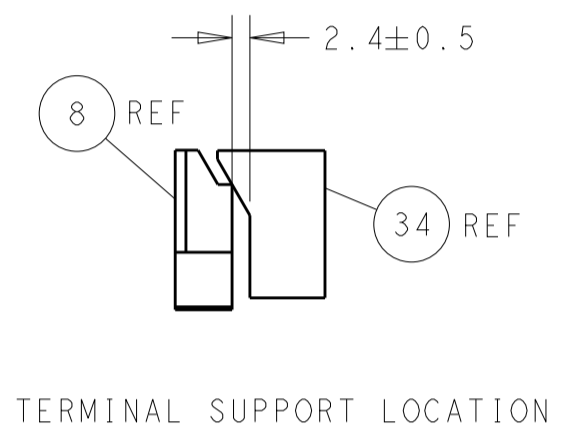
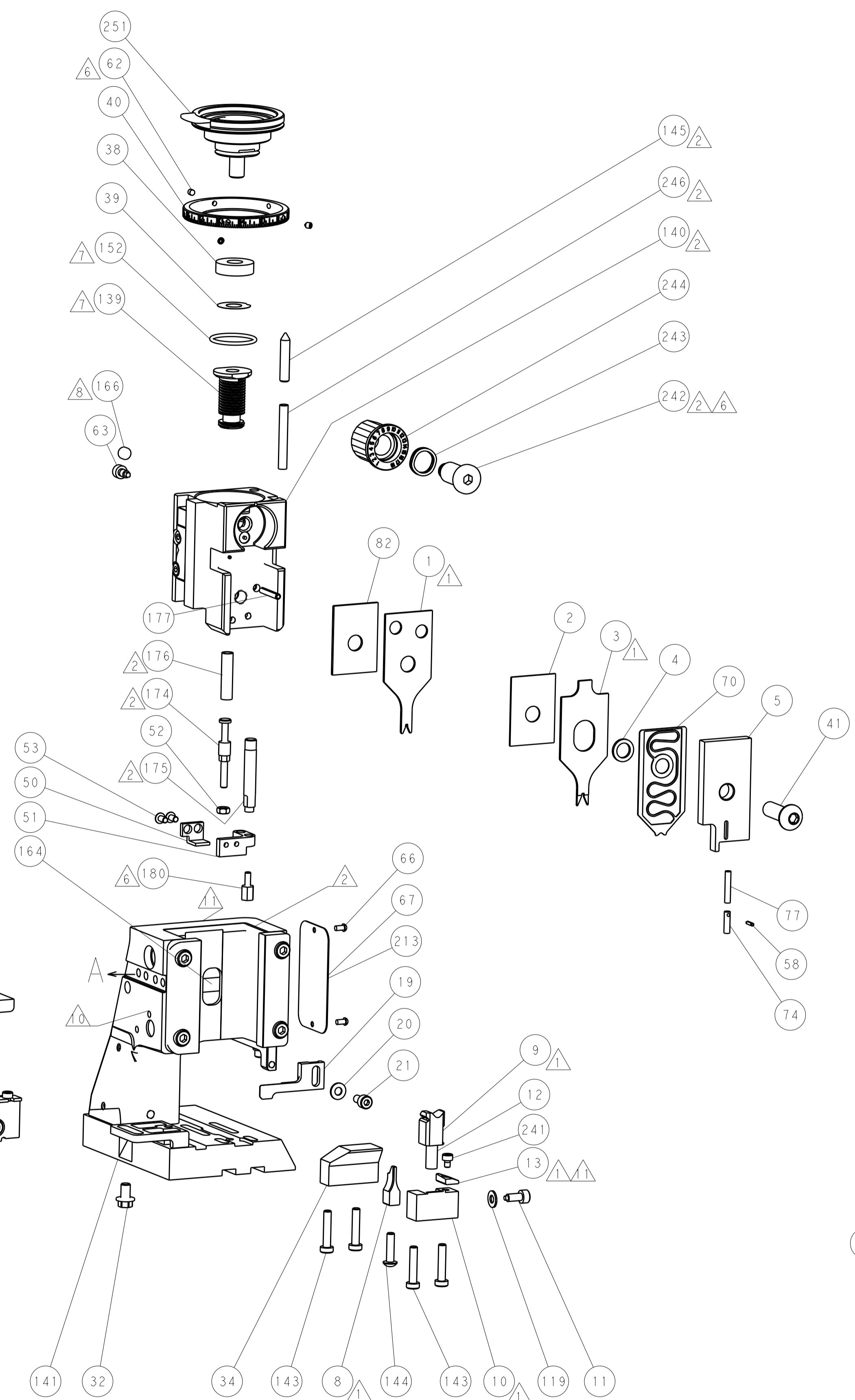
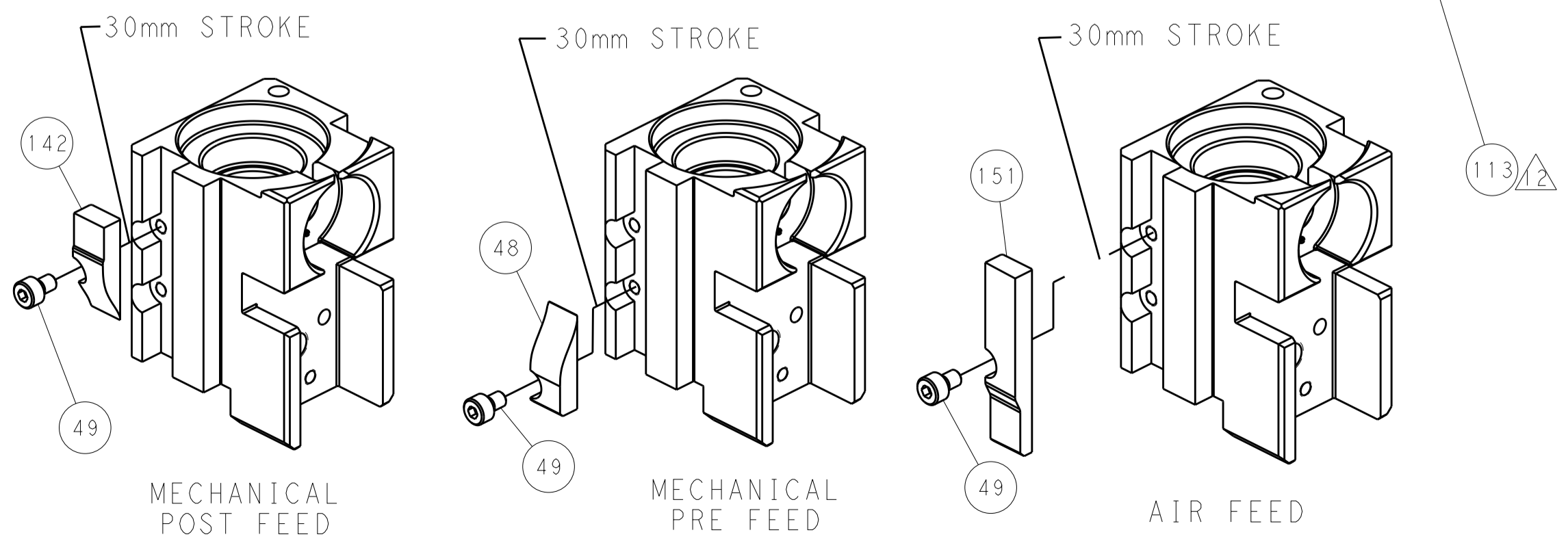
PNEUMATIC



SERVO LATCH PLATE



CAM POSITIONS



PACIFIC VERSION
 Shown on sheets 3 of 4 & 4 of 4
 (Atlantic version shown on sheets 1 of 4 & 2 of 4)

DIMENSIONS:		TOLERANCES UNLESS OTHERWISE SPECIFIED:		DWG: R.O. WILSON 31JAN2013		TE Connectivity	
mm	0 PLC ±	1 PLC ±	2 PLC ±	3 PLC ±	4 PLC ±	5 PLC ±	Harrisburg, PA 17105-3608
MATERIAL:		FINISH:		CHK: K.J. STAKEM 01FEB2013		NAME: Ocean Side Feed Applicator	
CUSTOMER DRAWING		SCALE: 1:2		APVD: T.L. ELBIN 01FEB2013		RESTRICTED TO	
				PRODUCT SPEC		SIZE: A1	
				APPLICATION SPEC		CAGE CODE: 00779	
				WEIGHT		DRAWING NO: 2151865	
				CUSTOMER DRAWING		SHEET 4 OF 4	
						REV: E1	