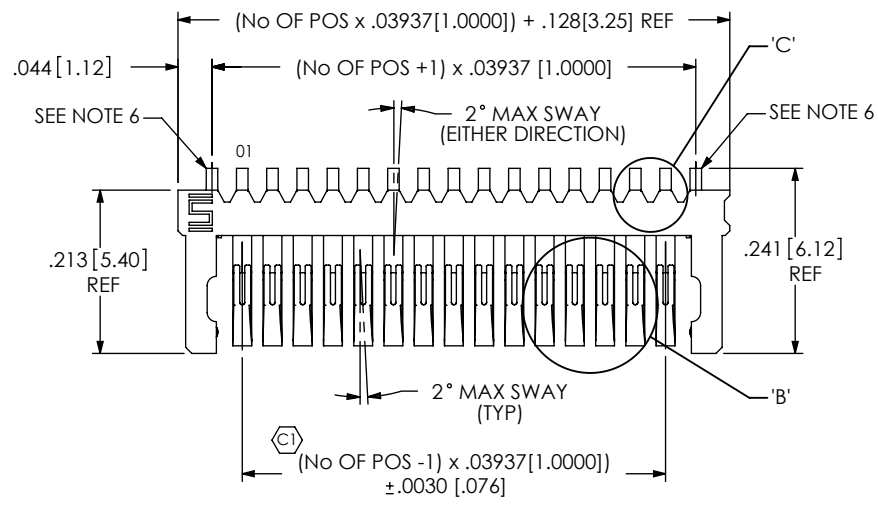


DO NOT SCALE FROM THIS PRINT



**SEL-1XX-XX-XXX-S-XX**

No OF POSITIONS  
-10, -15, -25

PACKAGING  
BLANK: NO PACKAGING SPECIFIED  
-T: TAPE & REEL (FOR SAMTEC INTERNAL USE ONLY) [SEE NOTE 5]  
-TR: TAPE & REEL (125 PCS MIN) [SEE NOTE 5]

LEAD STYLE  
-01: .0250 [.635]  
-02: .0500 [1.270]

ROW SPECIFICATION  
-S: SINGLE (USE SEL-XX-S-XX)

PLATING SPECIFICATION

C7 -FTL: FLASH SELECTIVE PURE TIN, MATTE FINISH (USE C-156-XX-FTL): .000003 MIN GOLD IN CONTACT AREA, .000120 MIN MATTE TIN ON TAIL, WITH .000050-.000150 NICKEL UNDERPLATE OVER ENTIRE CONTACT

C8 -LTL: LIGHT SELECTIVE PURE TIN, MATTE FINISH (USE C-156-XX-LTL): .000010 MIN GOLD IN CONTACT AREA, .000120 MIN MATTE TIN ON TAIL, WITH .000050-.000150 NICKEL UNDERPLATE OVER ENTIRE CONTACT

**SAMTEC WILL ONLY SUPPORT EXISTING BUSINESS ON THIS PRODUCT, 4/15/10** [K]

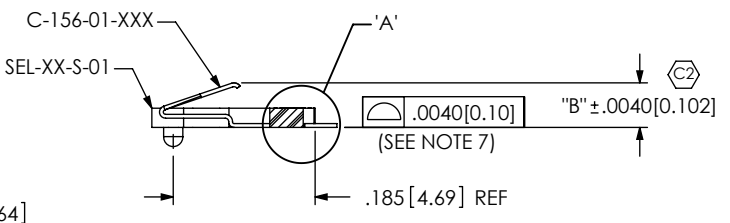
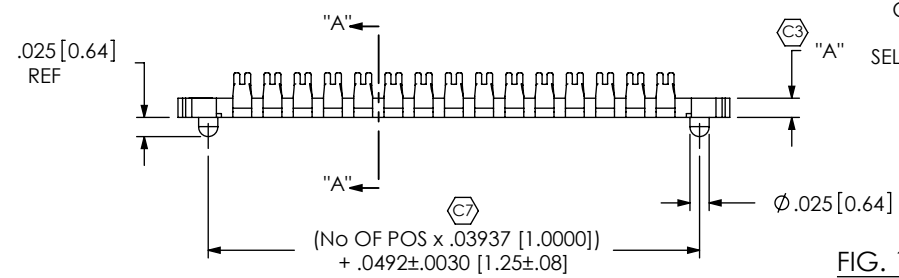


FIG. 1  
SEL-115-01-XXX-S SHOWN

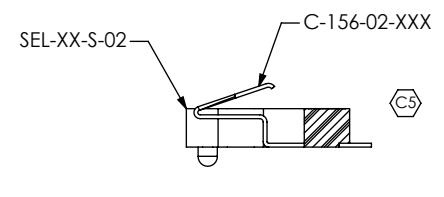
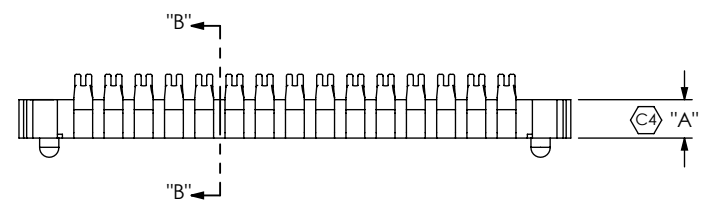
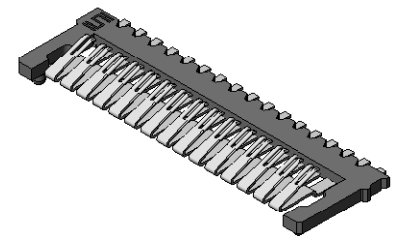


FIG. 2  
SEL-115-02-XXX-S SHOWN

[DIFFERENT AS SHOWN, OTHERWISE SAME AS -01 LEAD STYLE]



- NOTES:
1. (C) REPRESENTS A CRITICAL DIMENSION.
  2. BURR ALLOWANCE: .0015 [0.038] MAX.
  3. CONTACT TO BE FLUSH TO .003 [0.08] RECESSED WITH RESPECT TO THE BODY.
  4. MAXIMUM ALLOWABLE BOW: .0025 [0.064].
  5. STANDARD REEL HAS 1000 PCS AND 14 EMPTY POCKETS ON TRAILER AND 34 EMPTY POCKETS ON LEADER.
  6. OUTSIDE TAILS ARE WELD TABS; THEY WILL NOT CARRY SIGNAL.
  7. COPLANARITY INCLUDES BODY AND TAILS. TWO POINTS ON EACH PLASTIC END ARM TO BE INCLUDED IN COPLANARITY MEASUREMENT. (SEE SHEET 2, FIG 3)
  8. 1 LB. MIN RETENTION.

TABLE 1				
STYLE	"A"	"B"	BODY	CONTACT
-01	.0250 [.635]	.0580 [1.473]	SEL-XX-S-01	C-156-01-XXX
-02	.0500 [1.270]	.0830 [2.108]	SEL-XX-S-02	C-156-02-XXX

UNLESS OTHERWISE SPECIFIED, DIMENSIONS ARE IN INCHES. TOLERANCES ARE: DECIMALS ANGLES .XX: ±.01 [.3] .XXX: ±.005 [.13] .XXXX: ±.0020 [.051]	PROPRIETARY NOTE THIS DOCUMENT CONTAINS INFORMATION CONFIDENTIAL AND PROPRIETARY TO SAMTEC, INC. AND SHALL NOT BE REPRODUCED OR TRANSFERRED TO OTHER DOCUMENTS OR DISCLOSED TO OTHERS OR USED FOR ANY PURPOSE OTHER THAN THAT WHICH IT WAS OBTAINED WITHOUT THE EXPRESSED WRITTEN CONSENT OF SAMTEC, INC.	<b>samtec</b> 520 PARK EAST BLVD, NEW ALBANY, IN 47150 PHONE: 812-944-6733 FAX: 812-948-5047 e-Mail: info@SAMTEC.com code: 55322
MATERIAL: DO NOT SCALE DRAWING SHEET SCALE: 4:1 INSULATOR: DUPONT LCP17235; COLOR: BLACK CONTACT: PHOS BRONZE	DESCRIPTION: 1mm SINGLE ELEMENT LOW PROFILE ASSEMBLY	DWG. NO. <b>SEL-1XX-XX-XXX-S-XX</b>
F:\dmg\misc\mktg\SEL-1XX-XX-XXX-S-XX-MKT.SLDDRW	BY: DEAN P 2/14/2000	SHEET 1 OF 2

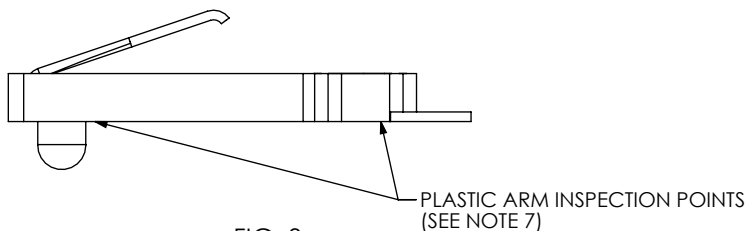
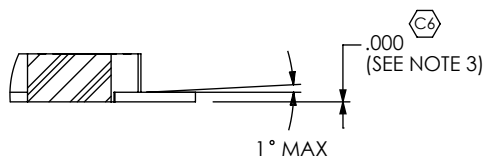
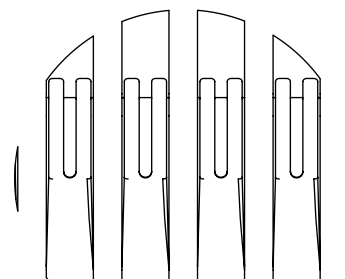


FIG. 3  
END VIEW FOR COPLANARITY INSPECTION



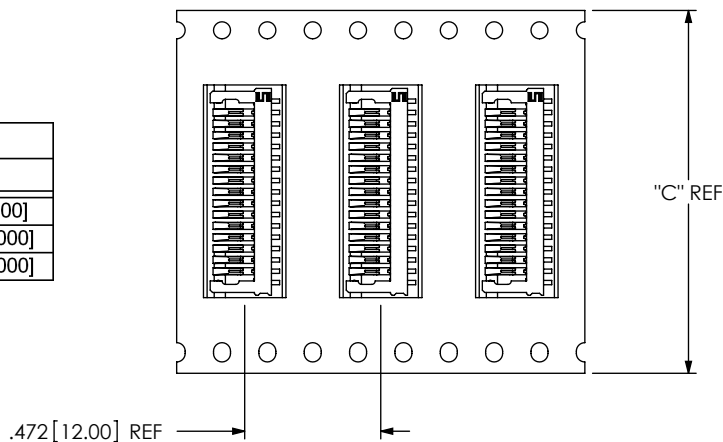
DETAIL 'A'  
SCALE TO: 1



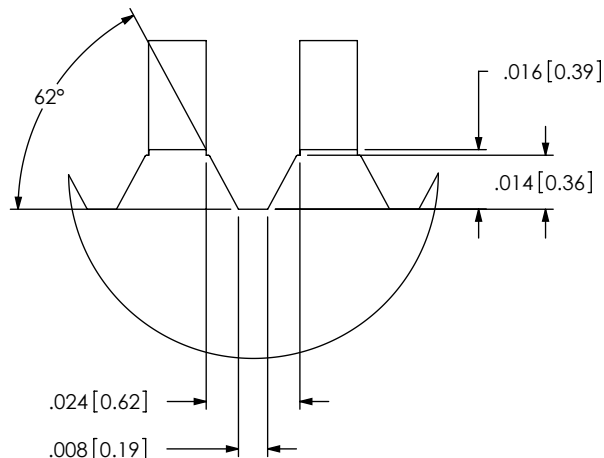
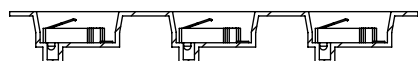
DETAIL 'B'  
SCALE TO: 1

PACKAGING VIEW  
(SEL-115-02-XXX-S-TR SHOWN)  
(SEE NOTE 5)

TABLE 2	
POSITIONS	"C"
-10	.9449[24.000]
-15	1.2598[32.000]
-25	1.7323[44.000]



DIRECTION OF UNREELING  
POCKET NOT DETAILED



DETAIL 'C'  
SCALE 20:1

PROPRIETARY NOTE

THIS DOCUMENT CONTAINS INFORMATION CONFIDENTIAL AND PROPRIETARY TO SAMTEC, INC. AND SHALL NOT BE REPRODUCED OR TRANSFERRED TO OTHER DOCUMENTS OR DISCLOSED TO OTHERS OR USED FOR ANY PURPOSE OTHER THAN THAT WHICH IT WAS OBTAINED WITHOUT THE EXPRESSED WRITTEN CONSENT OF SAMTEC, INC.

DO NOT SCALE DRAWING

SHEET SCALE: 1:0.333333

**samtec**

520 PARK EAST BLVD, NEW ALBANY, IN 47150  
PHONE: 812-944-6733 FAX: 812-948-5047  
e-Mail: info@SAMTEC.com code: 55322

DESCRIPTION:  
1mm SINGLE ELEMENT LOW PROFILE ASSEMBLY

DWG. NO.  
SEL-1XX-XX-XXX-S-XX

BY: DEAN P 2/14/2000 SHEET 2 OF 2