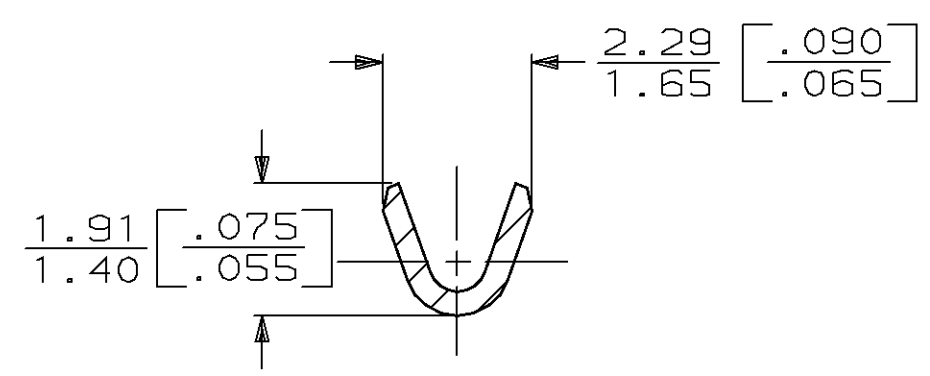
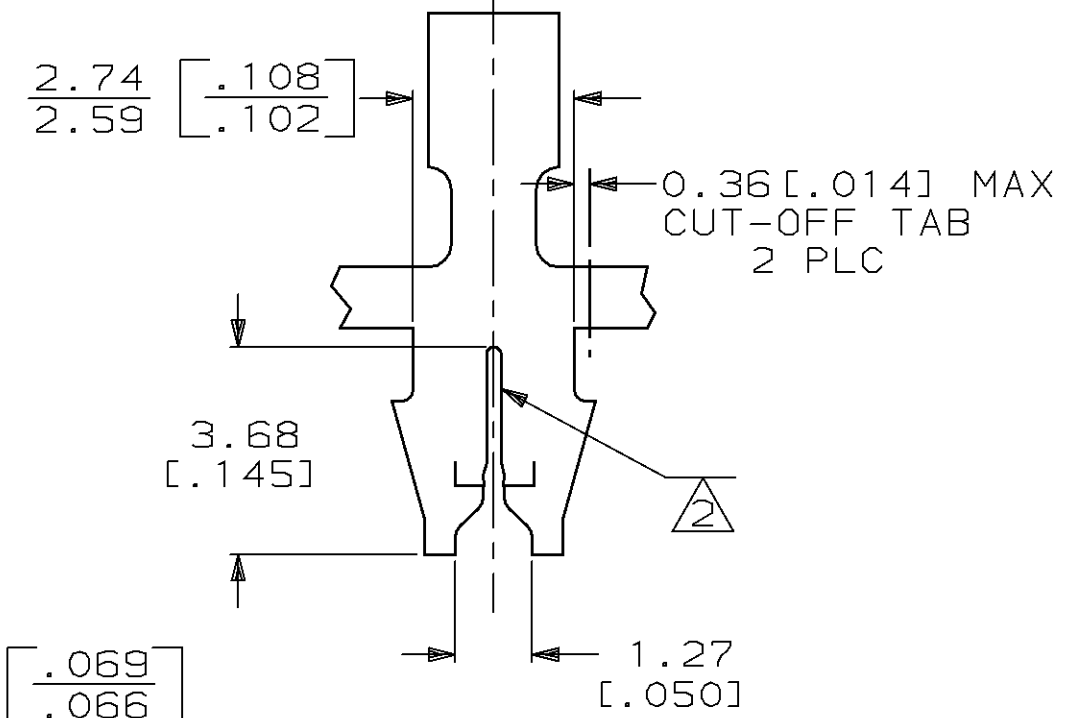
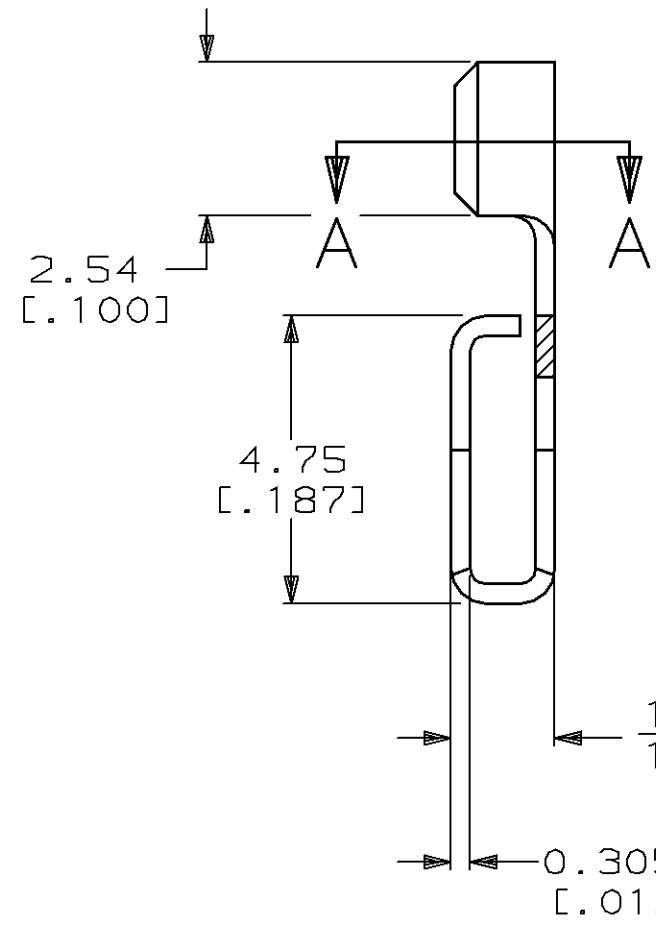
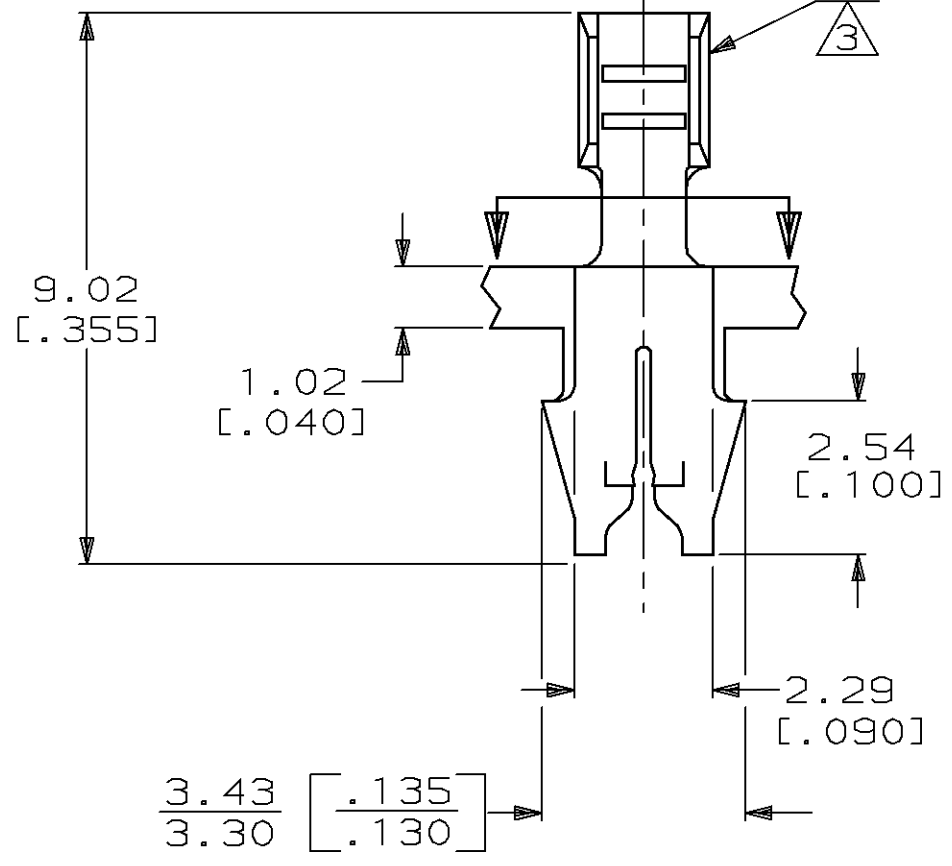
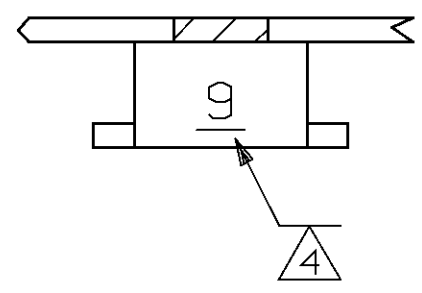


THIS DRAWING IS UNPUBLISHED. RELEASED FOR PUBLICATION, 19 .
 © COPYRIGHT 19 BY AMP INCORPORATED. ALL INTERNATIONAL RIGHTS RESERVED.

LOC	DIST	P	F	ZONE	LTR	DESCRIPTION	DATE	APPD
AF	50				N	REVISED PER AF-7503	8/16/91	MSF/NN

- 1 CONTINUOUS STRIP ON REELS WITH TERMINALS LOCATED ON 5.08 [.200] CENTERS.
- 2 SLOT ACCEPTS A 0.36-0.45 mm DIA [#27-#25] AWG COPPER MAGNET WIRE ONLY (2 WIRES MAX).
- 3 WIRE BARREL ACCEPTS 0.12-0.40 mm² [#26-#22] AWG LEAD WIRE.
- 4 IDENTIFICATION NUMBER FOR MAGNET WIRE RANGE.



SECTION A-A
ROTATED 90° CW

BENCH INSERTION MACHINE		62609-3
REVERSE REEL OF 62609-1	0.00381 [.000150] MIN THK PER MIL-T-10727	62609-2
MINI-APPLICATOR		62609-1
REELING	FINISH	PART NO

DO NOT SCALE PRINT. UNLESS SPECIFIED DIMENSIONS IN mm [INCHES] TOLERANCES ON: 2 PLC DEC ± - 3 PLC DEC ± 0.38 [.015] ANGLES ± -	DR 8/3/89 DK SCHRUM CHK 8/16/89 MS FEHER APPD 8/16/89 NE NEFF APPD 8/17/89 TL SHUTTER	AMP AMP INCORPORATED Harrisburg, Pa. 17105	
MATERIAL #4 HARD BRASS	PRODUCT SPEC -	NAME TERMINAL, F CRIMP, MAG-MATE™	
FINISH SEE TABLE	APPLICATION SPEC 114-2069	SIZE C	CAGE CODE 00779
	WEIGHT -	SCALE 8:1	DRAWING NO 62609
			SHEET 1 OF 1

3.56 [.140]	F	1.40 [.055]	0.97 [.038]	0.354 [.22]
			0.89 [.035]	0.204 [.24]
			0.86 [.034]	0.144 [.26]
STRIP LENGTH ±.015	TYPE	WIDTH	±0.051 [.002] HEIGHT	WIRE
WIRE BARREL CRIMP				

PROPOSED DESIGN
NOT RELEASED FOR
PRODUCTION

