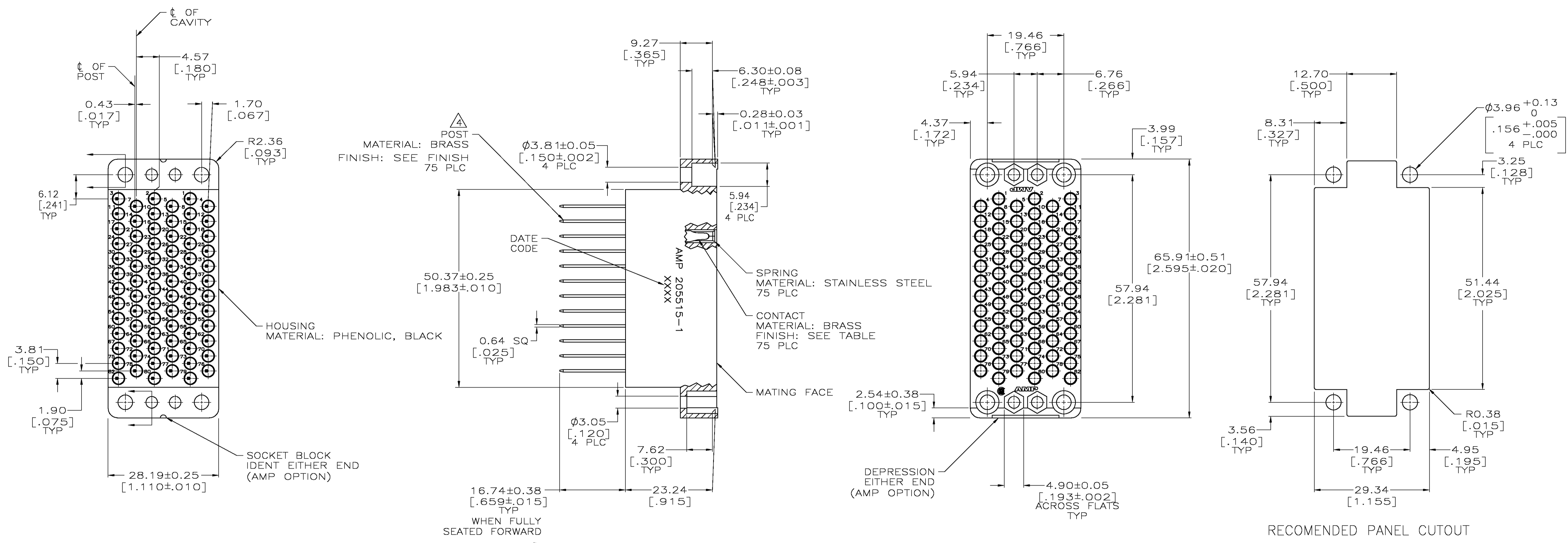


LOC		DIST		REVISIONS			
F	LTR	DESCRIPTION	DATE	BY	APPD	REV	REV
W		REVISED PER 063B-0095-05	4/4/05	SS	GS		



- ⚠ EACH POST WILL EXCEPT (SEE TABLE) TERMINATIONS OF #24 AWG MAX WIRE.
- ⚠ 0.76um [.000030] MIN GOLD ON MATING END FOR A LENGTH OF 5.08 [.200] MIN, GOLD FLASH ON THE REMAINDER OVER 0.76um [.000030] MIN NICKEL.
- ⚠ 2.54um [.000100] MIN TIN-LEAD OVER 1.27um [.000050] MIN NICKEL.
- ⚠ POSTS ARE SEMI-AUTOMATICALLY WIRABLE.
- ⚠ 2.54um [.000100] MIN TIN OVER 1.27um [.000050] MIN NICKEL.

RECOMENDED PANEL CUTOUT

⚠	⚠	3	9-205515-6
⚠	⚠	3	205515-1
POST PLATING	CONTACT FINISH	NO OF TERM	PART NUMBER
		1	

THIS DRAWING IS A CONTROLLED DOCUMENT.

BY: CARBO	14 OCT 97	Tyco Electronics Corporation Harrisburg, Pa 17105-3608
CHK: R.STONE	22 OCT 97	
APVD: R.STONE	31 OCT 97	NAME: SOCKET ASSY, 75 POSITION, AUTO-WIRABLE, STD, M SERIES
DIMENSIONS: mm [INCHES]	TOLERANCES UNLESS OTHERWISE SPECIFIED:	PRODUCT SPEC: -
0 PLC ± -	1 PLC ± -	APPLICATION SPEC: -
2 PLC ± 0.13 [.005]	3 PLC ± -	SIZE: A1
4 PLC ± -	ANGLES ± -	SCALE: 2:1
MATERIAL: SEE CALLOUTS	FINISH: SEE CALLOUTS	WEIGHT: -
CUSTOMER DRAWING		RESTRICTED TO: -

SCALE: 2:1 SHEET 1 OF 1 REV W