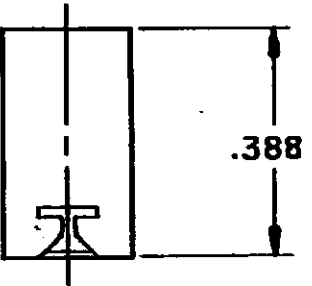
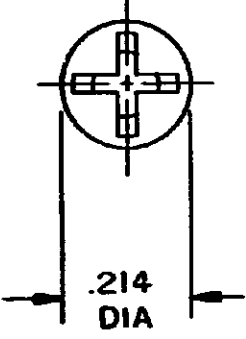


DRAWING MADE IN THIRD ANGLE PROJECTION

© COPYRIGHT 1980 BY AMP INCORPORATED, HARRISBURG, PA.
 ALL INTERNATIONAL RIGHTS RESERVED. AMP INCORPORATED PRODUCTS
 COVERED BY U. S. AND FOREIGN PATENTS AND/OR PATENTS PENDING.


		1		LOC AA	DIST 6012
REVISIONS					
P	F	ZONE	LTR	DESCRIPTION	DATE
		A		REVER ECN AA-2461	3/22/83
				TE	SD

D
C
WAS 1222-80-17-1
A



I. ALL DIMENSIONS ARE FOR REFERENCE ONLY
 UNLESS OTHERWISE SPECIFIED.

553595 - 1 AS SHOWN

			PART NO	
UNLESS OTHERWISE SPECIFIED DIMENSIONS ARE IN INCHES. TOLERANCES ON: DECIMALS ± ANGLES ±	CONTRACT NO		 AMP INCORPORATED Harrisburg, Pa.	
	DR <i>K. Shultz</i> 7-15-82			
MATERIAL NYLON (NATURAL)	CHK <i>M. Liburd</i> 7-19-82		NAME CAP, STUFFER, .156 DIA	
	APPD <i>[Signature]</i> 7-19-82		DRAWING NO 553595	
FINISH	DSGN APPD		SIZE B	CODE IDENT NO 00779
	OTHER APPD		SCALE 4:1	SHEET 1 OF 1

CUSTOMER DRAWING