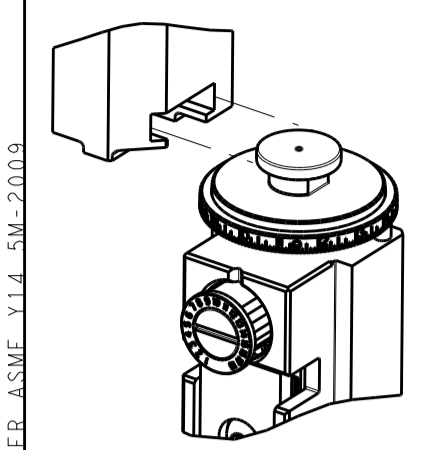


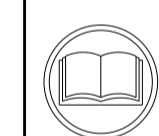
ATLANTIC VERSION TERMINATOR INTERFACE ADAPTER  
PART NUMBER REVISION DESCRIPTION FEED TYPE  
CONVERT TO PART NUMBERS REQUIRED  
PNEUMATIC FEED 2119950-1 1338685-1 5-18022-5 2119641-1 2119799-1 2063440-1  
SERVO LATCH PLATE 2119951-1 - 8-2151653-5 1901094-3 - 2168400-6 (QUANTITY 2)  
SMART APPLICATOR 2161326-1 - 8-2151653-4 - - -



APPLICATOR DATA  
CRIMP SIZE TYPE  
WIRE 2.97 mm [.117] F  
INSUL 4.06 mm [.160] F  
APPLICATOR INSTRUCTIONS 408-10389

TERMINAL DATA: MTA TERMINAL MTA CRIMP SPECIFICATION  
TERMINAL NAME: POWER TERMINAL UNI F630 WITH CLIP  
WIRE STRIP LENGTH 5.10-5.90 mm [.201-.232 IN] INSULATION DIAMETER RANGE Ø2.30-3.30 mm [.091-.130 IN]  
TERMINAL APPLICATION SPECIFICATION B0-018.003A  
TERMINALS APPLIED  
TE TERMINAL MTA TERMINAL TE TERMINAL MTA TERMINAL  
1572157-1 17.07930/10

WIRE SIZE CRIMP HEIGHT mm [INCH] CRIMP HEIGHT REFERENCE SETTING  
3.00mm2 2.00 +/- 0.05 [.079 +/- .002] 5.8  
2.50mm2 1.90 +/- 0.05 [.075 +/- .002] 6.7  
2.00mm2 1.80 +/- 0.05 [.071 +/- .002] 7.9



- RECOMMENDED SPARE PARTS
- GREASE BEARING SURFACES LIGHTLY
- LUBRICATE DAILY PER THE APPLICATOR INSTRUCTION SHEET SUPPLIED WITH THE APPLICATOR.
- APPLICATOR SPECIFIC DATA TO BE ENTERED INTO BLANK MEMORY CHIP AT ASSEMBLY. SEE BELOW FOR PART NUMBER:  
MECHANICAL FEED WITH "SMART APPLICATOR" CONVERSION: 8-2151653-4  
PNEUMATIC FEED WITH "SMART APPLICATOR" CONVERSION: 8-2151653-4  
SERVO FEED WITH "FINE CRIMP HEIGHT ADJUST": 8-2151653-5  
SERVO FEED WITH "NON-CRIMP HEIGHT ADJUST": 8-2151653-6
- ADJUSTMENT OF THE STRIPPER MAY BE REQUIRED WHEN MOVING THE APPLICATOR BETWEEN BENCH AND LEADMAKER APPLICATIONS.
- APPLY PART NUMBER 1-23419-5 LOCTITE TO THREADS OF ITEM 50.
- GREASE THREADS, GROOVE AND O-RING ON ITEMS 35 & 252.
- MAGNET, ITEM 166 MUST BE ORIENTED CORRECTLY IN ORDER TO PROPERLY ACTUATE THE COUNTER.
- CRIMP HEIGHT REFERENCE SETTING WAS THE SETTING USED WHEN THE APPLICATOR WAS QUALIFIED AT THE FACTORY. ADJUSTMENT MAY BE NECESSARY WHEN RUNNING APPLICATOR IN THE FIELD.
- SPARE FEED CAM STORAGE LOCATION REFER TO INSTRUCTION SHEET FOR ADDITIONAL INFORMATION.
- TO CONVERT THE APPLICATOR TO A NON-CARRIER CUTTING STYLE, REMOVE ITEM 13 AND ATTACH TO THE LOCATION ON THE BACK SIDE OF THE HOUSING. REFER TO INSTRUCTION SHEET FOR ADDITIONAL INFORMATION.
- WHEN ASSEMBLING -6 NON-CRIMP HEIGHT ADJUST APPLICATOR USE SHIM PACK 2119957-2 TO ALIGN APPLICATOR'S MAXIMUM WIRE CRIMP HEIGHT AT NORMAL TERMINATOR SHUT HEIGHT
- MOVE DOWEL PIN IN MECHANICAL FEED ASSEMBLY TO HOLE CLOSEST TO CAM ROLLER.

\*WARNING  
ON INSTALLATION, SET WIRE DISC, ITEM 40 TO LARGEST WIRE SIZE SETTING. USE OF SETTINGS BELOW MINIMUM REQUIRED CRIMP HEIGHT SETTING WILL CAUSE DAMAGE TO CRIMP TOOLING.

APPLICATOR SHIM PACK 260  
O-RING, .676 ID, .070 DIA. MAT. 252  
PUSH ROD, AIR FEED 250  
BUSHING, LCH5-12, MISUMI 249  
FEED CAM, AIR FEED 248  
DETENT PIN 247  
SPRING, COMPRESSION 246  
RAM, STEPPED, AMP STYLE, SIDE FEED, NON-ADJUST 245  
CAM, SNAIL, INSULATION ADJUSTMENT 244  
WASHER, WAVE SPRING, CREST-TO-CREST 243  
RETAINER, INSULATION DIAL 242  
SCR, SKT HD CAP M3 X 4.0 241  
SHCS, LOW HEAD, RoHS, M5 X 16 240  
MECHANICAL FEED ASSEMBLY 239  
AIR FEED MODULE 238  
TAG, IDENTIFICATION 213  
SPACER, FEEDER 198  
PIN, SLOTTED SPRING 3.0 X 12.0 177  
SPRING, COMPRESSION 176  
GUIDE PIN, HOLDDOWN 175  
-77 -7 -6 -5 -2 -1 PART NO DESCRIPTION ITEM NO

ATLANTIC VERSION  
Shown on sheets 1 of 4 & 2 of 4  
(Pacific version shown on sheets 3 of 4 & 4 of 4)

174 GUIDE PIN, HOLDDOWN  
172 RING, RETAIN, EXTERN, 3/16 CRESCENT  
166 MAGNET, RARE EARTH HIGH ENERGY  
164 COUNTER, MAGNETIC  
163 SPRING, FEED FINGER  
137 PIN, RETAIN, GRVD, 3/16 X .854  
136 HOLDER, FEED FINGER, AF  
135 MEMORY CHIP, PROGRAMMED  
133 SERVO FEED LATCH ASM  
119 WASHER, FLAT, REG M4  
96 FRONT STRIP GUIDE  
95 SCR, SKT HD CAP, RoHS, M3 X 8.0  
82 SPACER, CRIMPER  
81 SPACER, CRIMPER  
79 SCR, SKT HD CAP, RoHS, M3 X 8.0  
78 FENCE  
77 SPRING, COMPRESSION  
75 SPACER, CRIMPER  
74 HOLDER, INS  
71 DOCUMENTATION PACKAGE  
70 DEPRESSOR, WIRE  
69 WASHER, SPACER  
67 TAG, IDENTIFICATION  
66 SCREW, DRIVE, RH, RoHS  
63 LIMITER, ADJUSTMENT BOLT  
62 SCR, SET, SOC, CONE POINT, M3 X 4.0  
61 SCR, SET, FLT POINT M5 X 20.0  
60 SCR, BHSC, RoHS (M4 X 8)  
59 SCR, HEX HD CAP, M4 X 6.0  
58 PIN, SLOTTED SPRING .062 X .250  
56 PAWL, FEED  
54 SHCS, LOW HEAD, RoHS, M4 X 12  
52 NUT, HEX, REG, RoHS, M3.5  
51 HOLDDOWN, TERMINAL  
50 STANDOFF, HOLD-DOWN  
49 SCR, SKT HD CAP M4 X 6.0  
48 FEED CAM, PRE FEED  
47 FEED CAM, POST FEED  
46 APPLICATOR BASIC ASSEMBLY, SF  
44 RAM, STEPPED, AMP STYLE, SIDE FEED  
41 SCR, BHSC, RoHS (M8 X 25)  
40 DISC, NUMBERED FA WIRE ADJUSTMENT  
39 APPLICATOR SHIM PACK  
38 RAM WASHER, PRECISION  
37 FA HEAD, ATLANTIC STYLE  
35 BOLT, ADJUSTMENT  
34 SUPPORT, TERMINAL  
33 SCR, BHSC, RoHS (M4 X 20)  
32 HEX HEAD, FLANGED, M5 X 8mm LONG  
30 SPACER, STRIP GUIDE  
29 ASSEMBLY, STRIP GUIDE  
28 SPACER, CRIMPER  
27 SPRING, COMPRESSION  
26 LEVER, DRAG RELEASE  
25 DRAG, TERMINAL  
24 STRIP GUIDE  
23 SCR, SKT HD SHLDR 5.0 DIA X 6.0  
21 SCR, SKT HD CAP, RoHS, M4 X 8.0  
20 WASHER, FLAT, REG M4  
19 STRIPPER, SIDE FEED  
13 INSERT, SHEAR  
12 SPRING, COMPRESSION  
11 STOP, SHEAR  
10 SHEAR HOLDER, FRONT  
9 FLOATING SHEAR, FRONT  
8 ANVIL, COMBINATION  
7  
6  
5 DEPRESSOR, SHEAR  
4 BLOCK, CRIMPER SPACER  
3 CRIMPER, INSULATION F PREMIUM  
2 SPACER, CRIMPER  
1 CRIMPER, WIRE  
-77 -7 -6 -5 -2 -1 PART NO DESCRIPTION ITEM NO

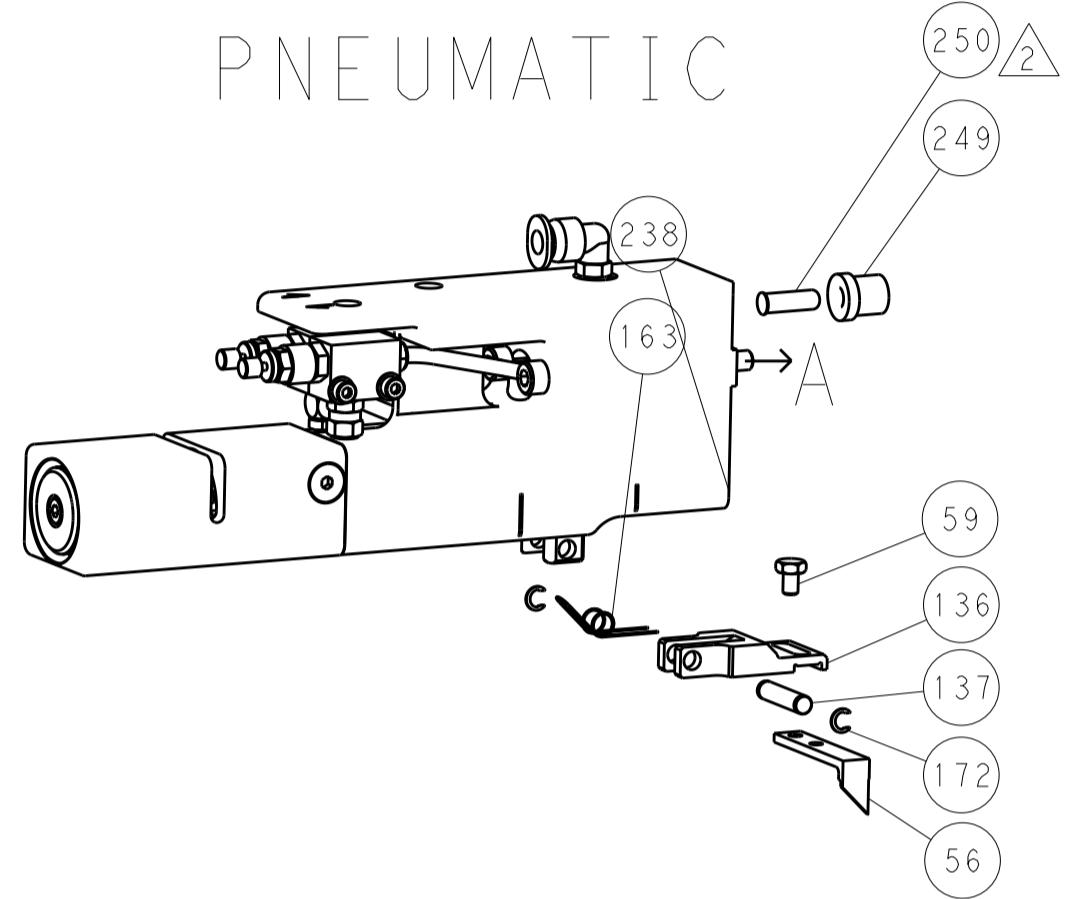
STC TE Connectivity  
Harrisburg, PA 17105-3608  
Ocean Side Feed Applicator  
DIMENSIONS: mm  
TOLERANCES UNLESS OTHERWISE SPECIFIED:  
0 PLC ±.1  
1 PLC ±0.1  
2 PLC ±0.02  
3 PLC ±0.005  
4 PLC ±0.0005  
ANGLES ±.1  
MATERIAL FINISH  
DWG: R. O. WILSON 08MAY2012  
CHK: K. J. STAKEM 08MAY2012  
APVD: T. L. ELBIN 09MAY2012  
NAME: Ocean Side Feed Applicator  
SIZE: A1 CAGE CODE: 00779 DRAWING NO: 2151653  
RESTRICTED TO: Customer Accessible Production Drawing SCALE: 1:1 SHEET 1 OF 4 REV: A

LOC		DIST		REVISIONS			
A	66	P	LTM	DESCRIPTION	DATE	OWN	APVD
		-		SEE SHEET 1			

### FEED TYPE MECHANICAL



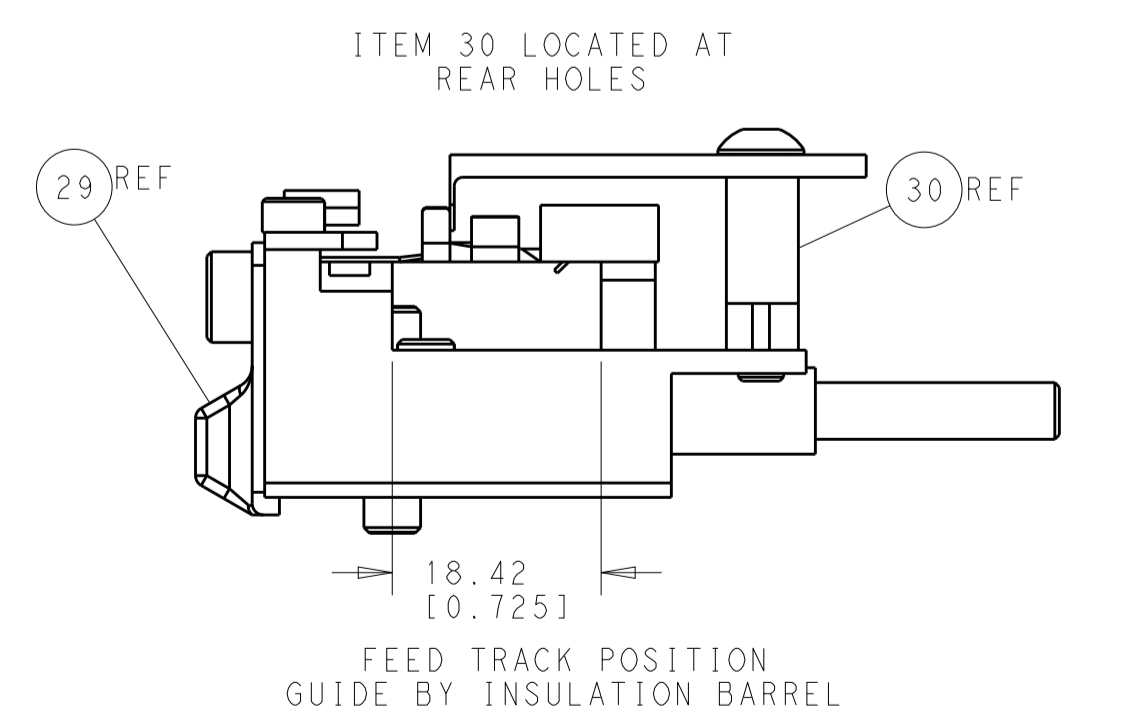
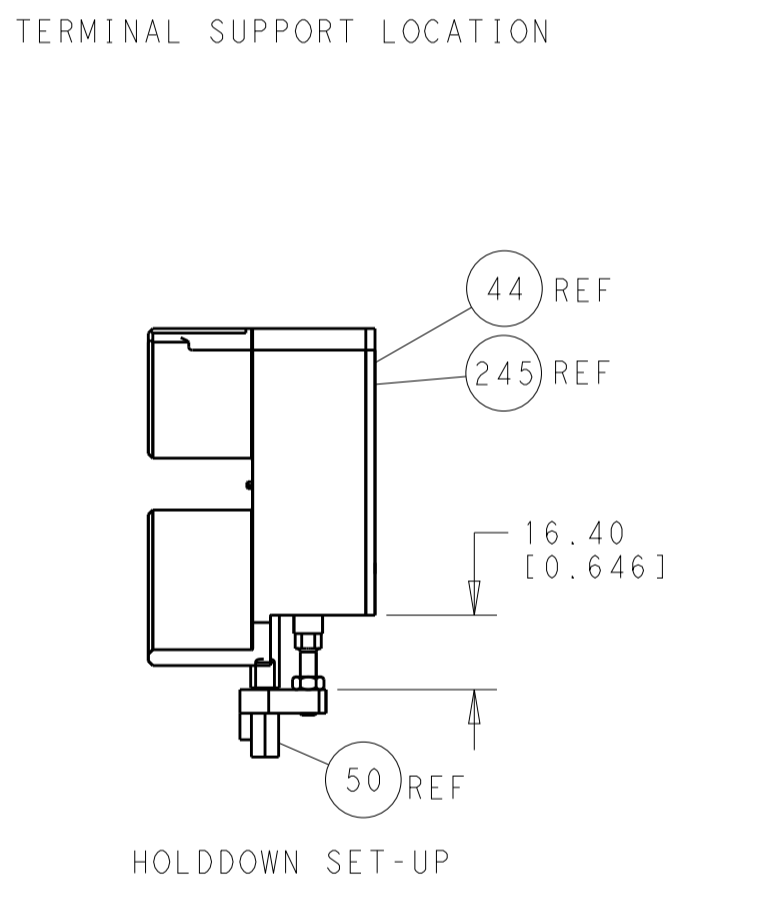
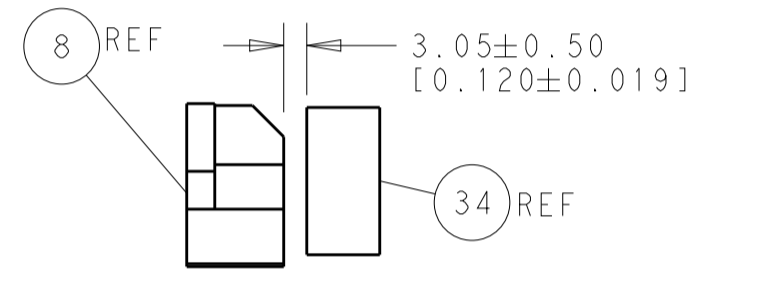
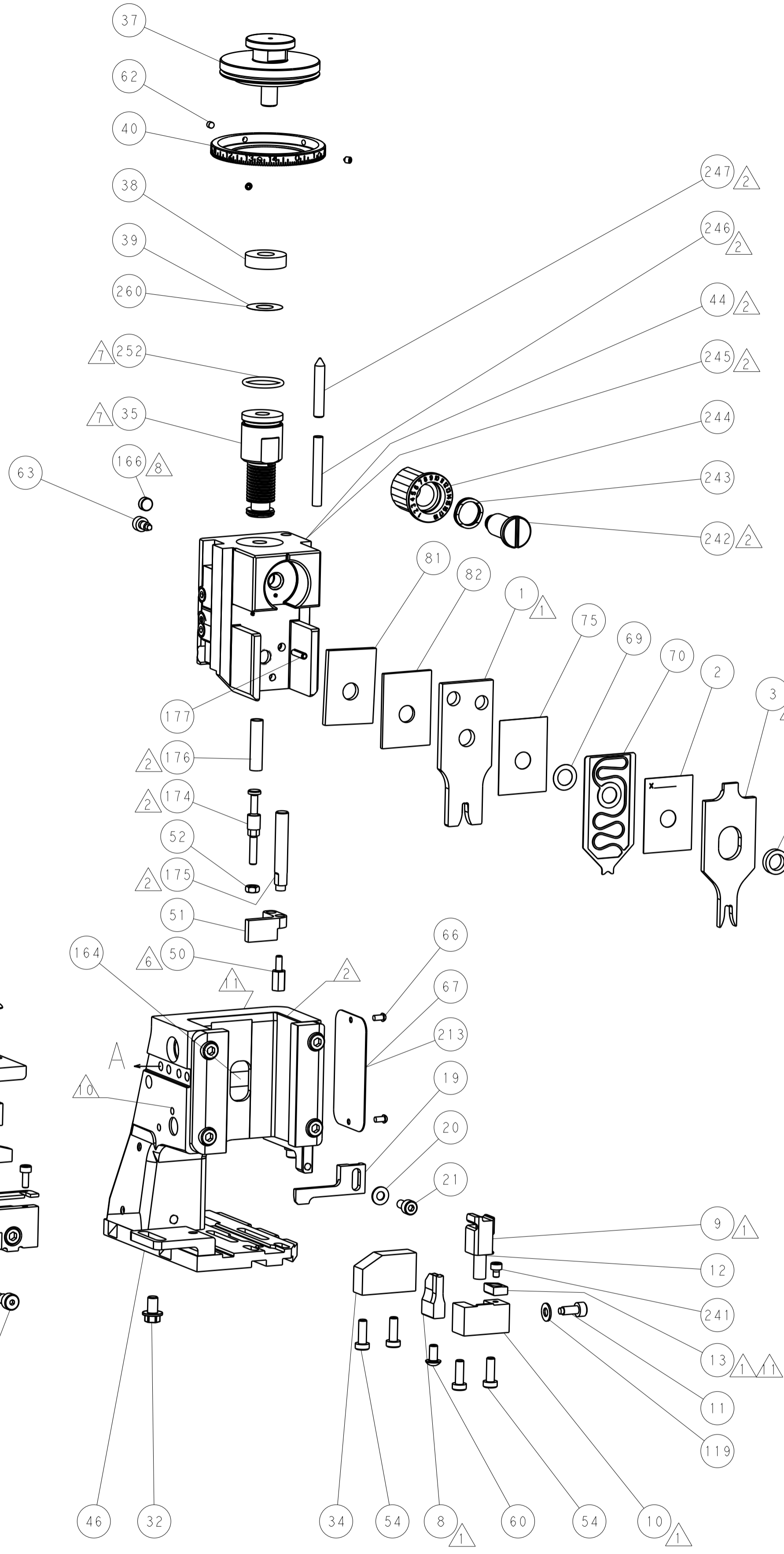
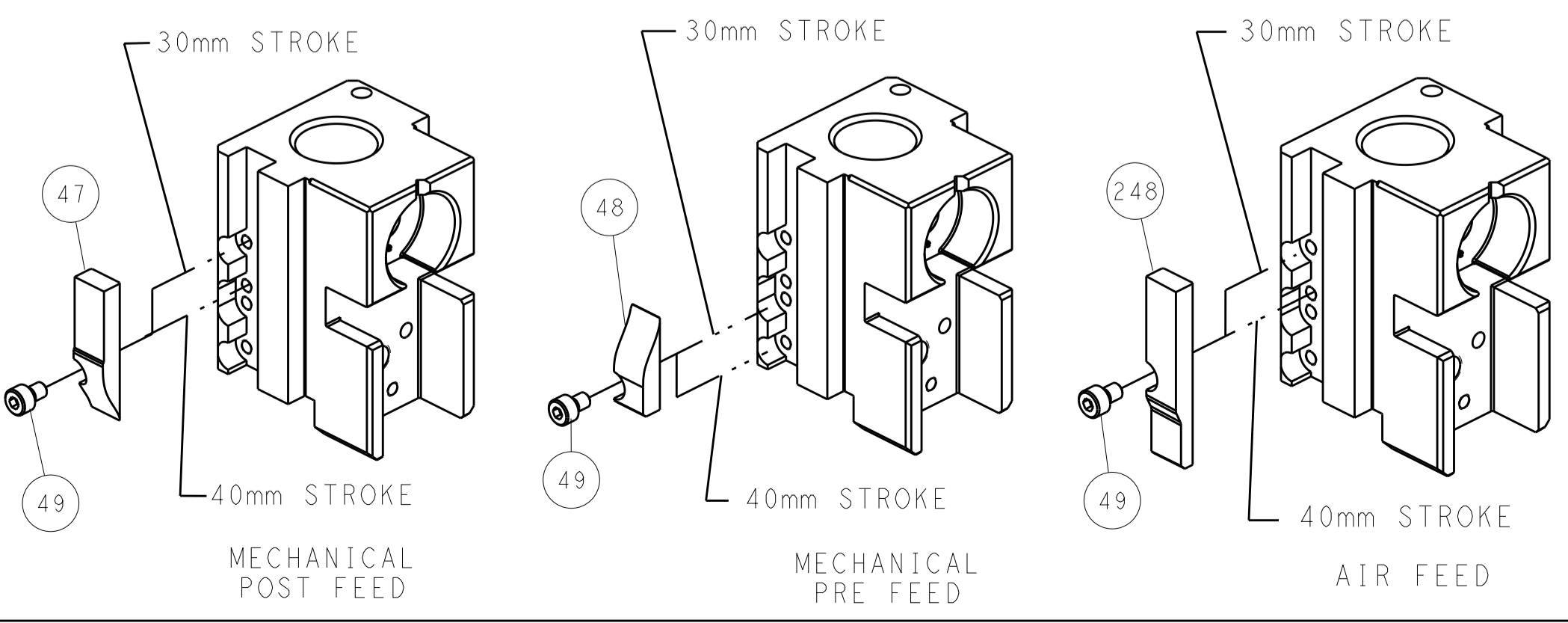
### PNEUMATIC



### SERVO LATCH PLATE



### CAM POSITIONS



**ATLANTIC VERSION**  
 Shown on sheets 1 of 4 & 2 of 4  
 (Pacific version shown on sheets 3 of 4 & 4 of 4)

DIMENSIONS:		TOLERANCES UNLESS OTHERWISE SPECIFIED:		DRAWN: R. O. WILSON 08MAY2012		TE Connectivity	
mm	0 PLC ±0.1	1 PLC ±0.1	2 PLC ±0.02	3 PLC ±0.005	4 PLC ±0.0005	APVD: T. L. ELBIN 09MAY2012	Harrisburg, PA 17105-3608
MATERIAL:		FINISH:		NAME: Ocean Side Feed Applicator		RESTRICTED TO:	
				SIZE: A1		CAGE CODE: 00779	
				DRAWING NO: 2151653		SCALE: 1:1	
				SHEET: 2		OF: 4	
				REV: A			

PACIFIC VERSION TERMINATOR INTERFACE ADAPTER	PART NUMBER	REVISION	DESCRIPTION	FEED TYPE	APPLICATOR STYLE CONVERSION CHART							
					CONVERT TO	PART NUMBERS REQUIRED						
	2-2151653-1	A	FINE CRIMP HEIGHT ADJUST	MECHANICAL	PNEUMATIC FEED	2119950-1	1338685-1	5-18022-5	2119641-2	2119799-1	2063440-1	
					SERVO LATCH PLATE	2119951-1	-	8-2151653-5	1901094-3	-	2168400-6 (QUANTITY 2)	
	2-2151653-2	A	FINE CRIMP HEIGHT ADJUST	PNEUMATIC	SMART APPLICATOR	2161326-1	-	8-2151653-4	-	-	-	-
					MECHANICAL FEED	2119949-1	1338685-1	5-18022-5	2119653-2	-	-	
					SERVO LATCH PLATE	2119951-1	-	8-2151653-5	1901094-3	-	2168400-6 (QUANTITY 2)	
2-2151653-5	A	FINE CRIMP HEIGHT ADJUST	SERVO LATCH PLATE	SMART APPLICATOR	2161326-1	-	8-2151653-4	-	-	-		
				MECHANICAL FEED	2119949-1	1338685-1	5-18022-5	2119653-2	-	-		
2-2151653-7	A	FINE CRIMP HEIGHT ADJUST	NONE	-	-	-	-	-	-	-		
7-2151653-7	A	CRIMP TOOLING KIT	-	-	-	-	-	-	-	-		

APPLICATOR DATA		
CRIMP	SIZE	TYPE
WIRE	2.97 mm [.117]	F
INSUL	4.06 mm [.160]	F
APPLICATOR INSTRUCTIONS 408-10389		

TERMINAL DATA: MTA TERMINAL		MTA CRIMP SPECIFICATION	
TERMINAL NAME: POWER TERMINAL UNI F630 WITH CLIP			
WIRE STRIP LENGTH		INSULATION DIAMETER RANGE	
5.10-5.90 mm [1.201-.232 IN]		Ø2.30-3.30 mm [1.091-.130 IN]	
TERMINAL APPLICATION SPECIFICATION	B0-018.003A	-	-
TERMINALS APPLIED			
TE TERMINAL	MTA TERMINAL	TE TERMINAL	MTA TERMINAL
1572157-1	17.07930/10		

WIRE SIZE	CRIMP HEIGHT mm [INCH]	CRIMP HEIGHT REFERENCE SETTING
3.00mm2	2.00 +/- 0.05 [1.079 +/- .002]	5.8
2.50mm2	1.90 +/- 0.05 [1.075 +/- .002]	6.7
2.00mm2	1.80 +/- 0.05 [1.071 +/- .002]	7.9

- RECOMMENDED SPARE PARTS
- GREASE BEARING SURFACES LIGHTLY
- 3. LUBRICATE DAILY PER THE APPLICATOR INSTRUCTION SHEET SUPPLIED WITH THE APPLICATOR.
- APPLICATOR SPECIFIC DATA TO BE ENTERED INTO BLANK MEMORY CHIP AT ASSEMBLY. SEE BELOW FOR PART NUMBER:  
 MECHANICAL FEED WITH "SMART APPLICATOR" CONVERSION: 8-2151653-4  
 PNEUMATIC FEED WITH "SMART APPLICATOR" CONVERSION: 8-2151653-4  
 SERVO FEED WITH "FINE CRIMP HEIGHT ADJUST": 8-2151653-5
- 5. ADJUSTMENT OF THE STRIPPER MAY BE REQUIRED WHEN MOVING THE APPLICATOR BETWEEN BENCH AND LEADMAKER APPLICATIONS.
- APPLY PART NUMBER 1-23419-5 LOCTITE TO THREADS OF ITEM 50.
- GREASE THREADS, GROOVE AND O-RING ON ITEMS 139 & 152.
- MAGNET MUST BE ORIENTED CORRECTLY IN ORDER TO PROPERLY ACTUATE THE COUNTER.
- CRIMP HEIGHT REFERENCE SETTING WAS THE SETTING USED WHEN THE APPLICATOR WAS QUALIFIED AT THE FACTORY. ADJUSTMENT MAY BE NECESSARY WHEN RUNNING APPLICATOR IN THE FIELD.
- SPARE FEED CAM STORAGE LOCATION REFER TO INSTRUCTION SHEET FOR ADDITIONAL INFORMATION.
- TO CONVERT THE APPLICATOR TO A NON-CARRIER CUTTING STYLE, REMOVE ITEM 13 AND ATTACH TO THE LOCATION ON BACK SIDE OF THE HOUSING. REFER TO INSTRUCTION SHEET FOR ADDITIONAL INFORMATION.
- MOVE DOWEL PIN IN MECHANICAL FEED ASSEMBLY TO HOLE CLOSEST TO CAM ROLLER.

\*WARNING  
 ON INSTALLATION, SET WIRE DISC, ITEM 40 TO LARGEST WIRE SIZE SETTING. USE OF SETTINGS BELOW MINIMUM REQUIRED CRIMP HEIGHT SETTING WILL CAUSE DAMAGE TO CRIMP TOOLING.

-	1	1	1	1	2119782-1	FINE ADJUST HEAD ASM, PACIFIC STYLE	251
-	-	-	-	-	2119640-1	PUSH ROD, AIR FEED	250
-	-	-	-	-	2079988-1	BUSHING, LCH5-12, MISUMI	249
-	1	1	1	1	1-22279-3	SPRING, COMPRESSION	246
-	1	1	1	1	2119082-9	CAM, SNAIL, INSULATION ADJUSTMENT	244
-	1	1	1	1	2079764-1	WASHER, WAVE SPRING, CREST-TO-CREST	243
-	1	1	1	1	2119083-1	RETAINER, INSULATION DIAL	242
-	1	1	1	1	7-18023-7	SCR, SKT HD CAP M3 X 4.0	241
-	-	2	-	-	2168400-6	SHCS, LOW HEAD, RoHS, M5 X 16	240
-	-	-	-	-	2119580-1	MECHANICAL FEED ASSEMBLY	239
-	-	-	-	-	2063440-1	AIR FEED MODULE	238
-	-	-	-	-	2119740-2	TAG, IDENTIFICATION	213
-	-	-	-	-	1901094-3	SPACER, FEEDER	198
-	1	1	1	1	993111-8	PIN, SLOTTED SPRING 3.0 X 12.0	177
-	1	1	1	1	8-22280-7	SPRING, COMPRESSION	176
-	1	1	1	1	1752353-2	GUIDE PIN, HOLDDOWN	175
-	1	1	1	1	1901680-2	GUIDE PIN, HOLDDOWN	174
-	-	-	-	-	21045-3	RING, RETAIN, EXTERN, 3/16 CRESCENT	172
-77	-27	-25	-22	-21	PART NO	DESCRIPTION	ITEM NO



PACIFIC VERSION  
 Shown on sheets 3 of 4 & 4 of 4  
 (Atlantic version shown on sheets 1 of 4 & 2 of 4)

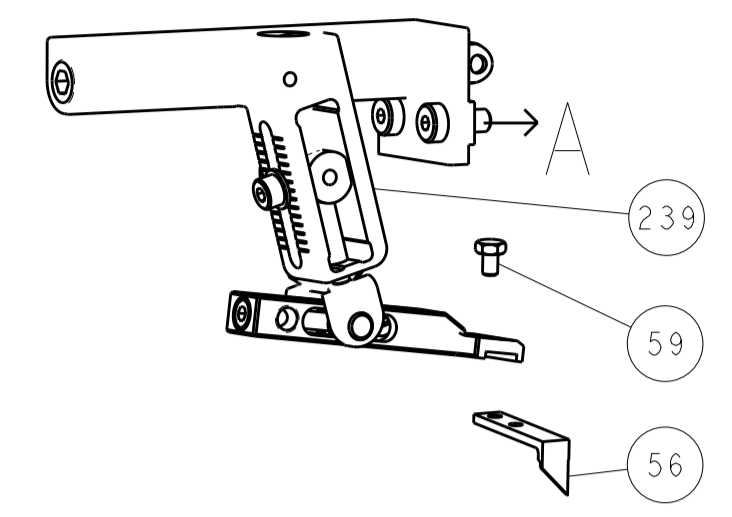
SET UP GAUGE	LOC	DIST	REVISIONS			
2119599-1	A	66	REV	DATE	BY	APPD
			-	SEE SHEET 1	-	-

-	1	1	1	1	994969-1	MAGNET, RARE EARTH HIGH ENERGY	166
-	REF	REF	REF	REF	994970-2	COUNTER, MAGNETIC	164
-	-	-	-	-	240638-1	SPRING, FEED FINGER	163
-	1	1	1	1	8-21084-1	O-RING, .801 ID, .070 DIA. MAT.	152
-	-	-	-	-	2119641-2	FEED CAM, AIR FEED	151
-	1	1	1	1	2119798-2	DETENT PIN	145
-	1	1	1	1	2079383-8	SCR, BHSC, RoHS (M4 X 16)	144
-	4	4	4	4	2168400-5	SHCS, LOW HEAD, RoHS, M4 X 20	143
-	-	-	-	-	2119653-2	FEED CAM, POST FEED	142
-	1	1	1	1	1-2119656-0	APPLICATOR BASIC ASSEMBLY, SF	141
-	1	1	1	1	2161312-1	RAM, STEPPED, ASIAN STYLE, SIDE FEED	140
-	1	1	1	1	2119092-2	BOLT, ADJUSTMENT	139
-	-	-	-	-	3-23627-7	PIN, RETAIN, GRVD, 3/16 X .854	137
-	-	-	-	-	2119799-1	HOLDER, FEED FINGER, AF	136
-	-	REF	-	-	SEE NOTE 4	MEMORY CHIP, PROGRAMMED	135
-	-	-	-	-	1633743-1	SERVO FEED LATCH ASM	133
-	1	1	1	1	1-18028-2	WASHER, FLAT, REG M4	119
-	1	1	1	1	1-690438-0	FRONT STRIP GUIDE	96
-	2	2	2	2	2168083-1	SCR, SKT HD CAP, RoHS, M3 X 8.0	95
-	1	1	1	1	1-455888-6	SPACER, CRIMPER	82
-	1	1	1	1	2-455888-4	SPACER, CRIMPER	81
-	2	2	2	2	2168083-1	SCR, SKT HD CAP, RoHS, M3 X 8.0	79
-	1	1	1	1	1633782-3	FENCE	78
-	1	1	1	1	22278-8	SPRING, COMPRESSION	77
-	1	1	1	1	455888-1	SPACER, CRIMPER	75
-	1	1	1	1	854769-4	HOLDER, INS	74
-	1	1	1	1	2119956-1	DOCUMENTATION PACKAGE	71
-	1	1	1	1	2119791-5	DEPRESSOR, WIRE	70
-	1	1	1	1	2119943-1	WASHER, SPACER	69
-	1	-	-	-	2119740-1	TAG, IDENTIFICATION	67
-	2	2	2	2	2168078-1	SCREW, DRIVE, RH, RoHS	66
-	1	1	1	1	2119793-1	LIMITER, ADJUSTMENT BOLT	63
-	3	3	3	3	992763-5	SCR, SET, SOC, CONE POINT, M3 x 4.0	62
-	2	2	2	2	2-18032-5	SCR, SET, FLT POINT M5 X 20.0	61
-	-	-	-	-	5-18022-5	SCR, HEX HD CAP, M4 X 6.0	59
-	1	1	1	1	21028-2	PIN, SLOTTED SPRING .062 X .250	58
-	-	-	-	-	1338685-1	PAWL, FEED	56
-	1	1	1	1	1-5018030-0	NUT, HEX, REG, RoHS, M3.5	52
-	1	1	1	1	1901681-1	HOLDDOWN, TERMINAL	51
-	1	1	1	1	2-1752354-3	STANDOFF, HOLD-DOWN	50
-	-	-	-	-	18023-9	SCR, SKT HD CAP M4 X 6.0	49
-	-	-	-	-	2119652-1	FEED CAM, PRE FEED	48
-	1	1	1	1	2079383-7	SCR, BHSC, RoHS (M8 X 25)	41
-	1	1	1	1	2119645-1	DISC, NUMBERED FA WIRE ADJUSTMENT	40
-	1	1	1	1	2119957-1	APPLICATOR SHIM PACK	39
-	1	1	1	1	2119644-1	RAM WASHER, PRECISION	38
-	1	1	1	1	1752356-1	SUPPORT, TERMINAL	34
-	2	2	2	2	2079383-5	SCR, BHSC, RoHS (M4 X 20)	33
-	1	1	1	1	2161328-1	HEX HEAD, FLANGED, M5 x 8mm LONG	32
-	1	1	1	1	1-1320908-2	SPACER, STRIP GUIDE	30
-	1	1	1	1	2119959-3	ASSEMBLY, STRIP GUIDE	29
-	1	1	1	1	1-455888-0	SPACER, CRIMPER	28
-	2	2	2	2	22283-1	SPRING, COMPRESSION	27
-	1	1	1	1	356835-1	LEVER, DRAG RELEASE	26
-	1	1	1	1	240792-1	DRAG, TERMINAL	25
-	1	1	1	1	1320928-6	STRIP GUIDE	24
-	1	1	1	1	980371-4	SCR, SKT HD SHLDR 5.0 DIA X 6.0	23
-	1	1	1	1	2168083-2	SCR, SKT HD CAP, RoHS, M4 X 8.0	21
-	1	1	1	1	1-18028-2	WASHER, FLAT, REG M4	20
-	1	1	1	1	2119533-1	STRIPPER, SIDE FEED	19
-	1	1	1	1	2119806-1	INSERT, SHEAR	13
-	1	1	1	1	3-22280-3	SPRING, COMPRESSION	12
-	1	1	1	1	1-356885-5	STOP, SHEAR	11
-	1	1	1	1	2119805-4	SHEAR HOLDER, FRONT	10
-	1	1	1	1	3-454276-8	FLOATING SHEAR, FRONT	9
-	1	1	1	1	1633932-9	ANVIL, COMBINATION	8
-	-	-	-	-	-	-	7
-	-	-	-	-	-	-	6
-	1	1	1	1	2119780-9	DEPRESSOR, SHEAR	5
-	1	1	1	1	238011-2	BLOCK, CRIMPER SPACER	4
-	1	1	1	1	3-2119582-4	CRIMPER, INSULATION F PREMIUM	3
-	1	1	1	1	455888-3	SPACER, CRIMPER	2
-	1	1	1	1	4-568176-3	CRIMPER, WIRE	1
-77	-27	-25	-22	-21	PART NO	DESCRIPTION	ITEM NO

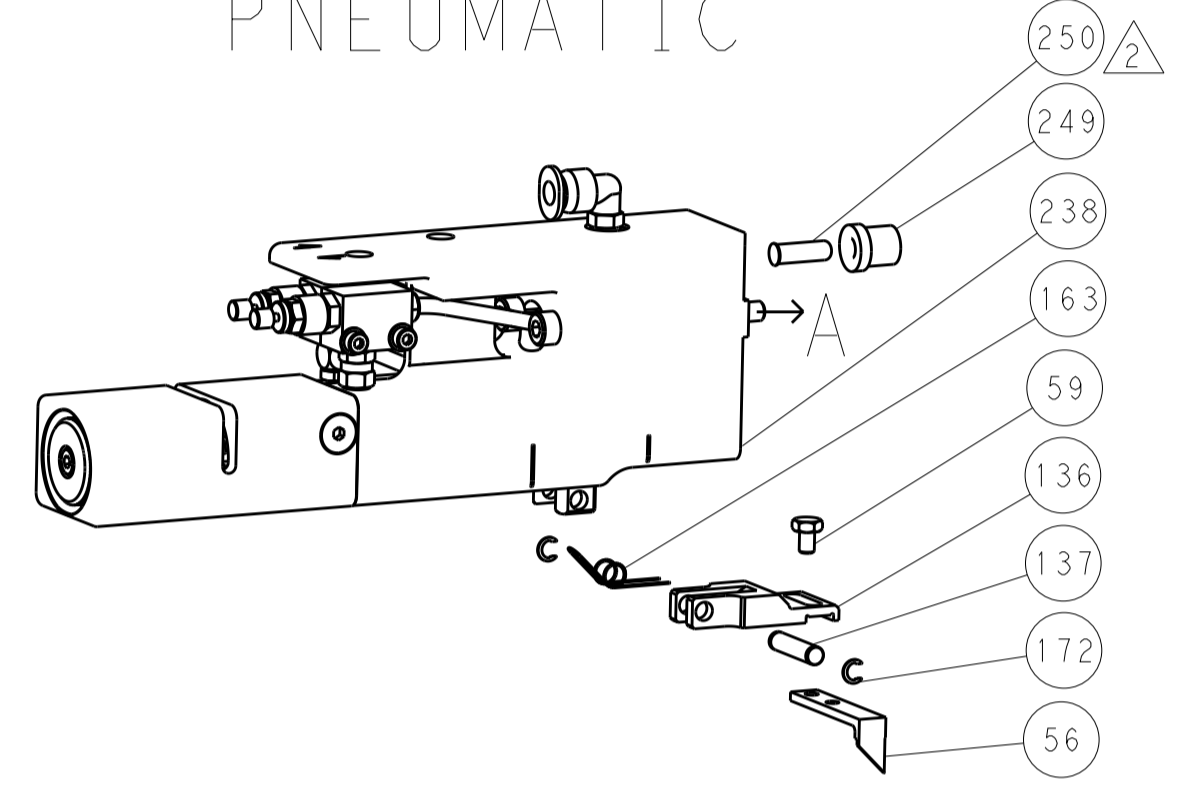
DIMENSIONS: mm		TOLERANCES UNLESS OTHERWISE SPECIFIED:		DRAWN: R.O. WILSON 08MAY2012		CHK: K.J. STAKEM 08MAY2012		APPD: T.L. ELBIN 09MAY2012		NAME: Ocean Side Feed Applicator	
0 PLC	±	1 PLC	±0.1	2 PLC	±0.02	3 PLC	±0.005	4 PLC	±0.0005	ANGLES	±
MATERIAL:		FINISH:		WEIGHT:		SCALE: A1 00779		CAGE CODE: ©=2151653		RESTRICTED TO:	
Customer Accessible Production Drawing						Customer Accessible Production Drawing					

LOC		DIST		REVISIONS			
A	66	P	LTM	DESCRIPTION	DATE	OWN	APVD
		-		SEE SHEET 1			

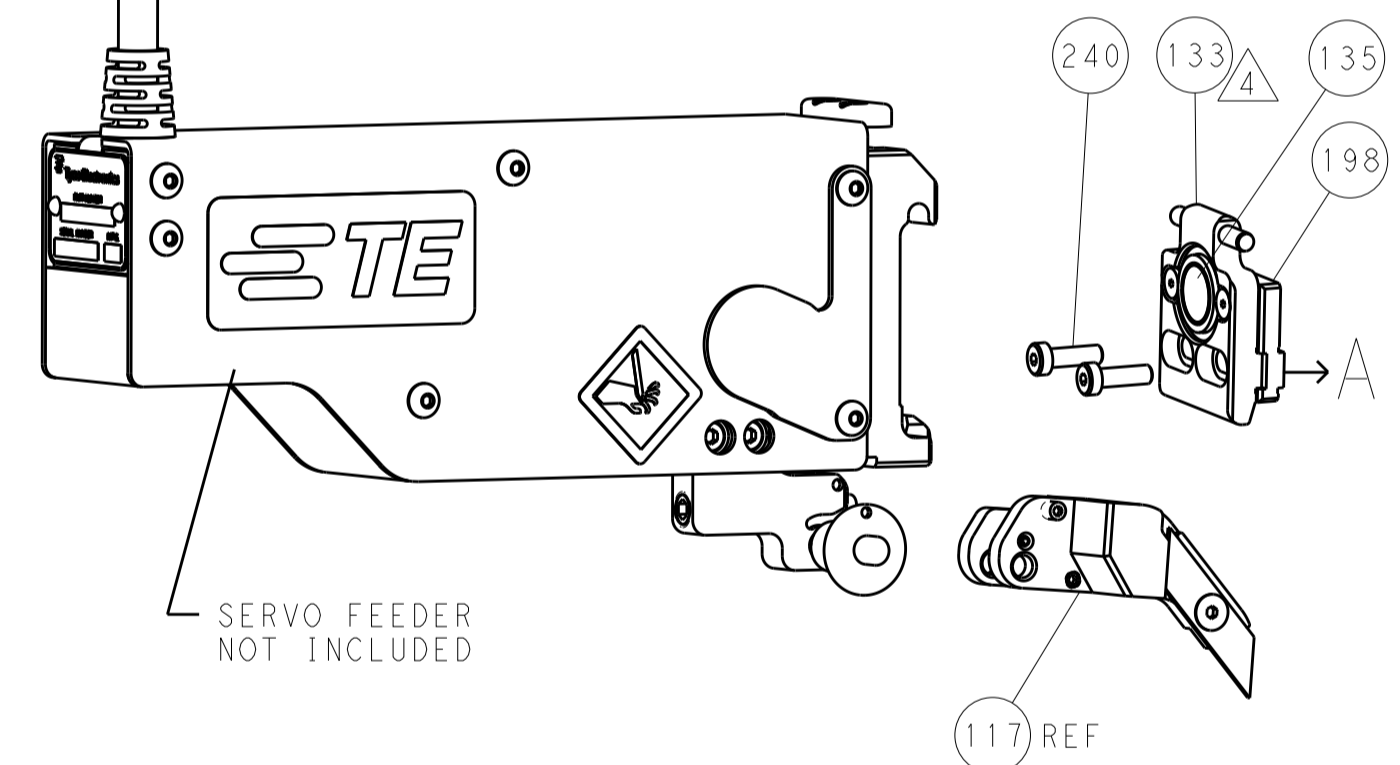
# FEED TYPE MECHANICAL



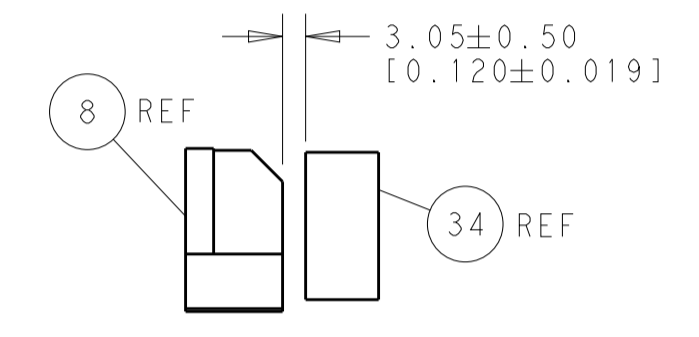
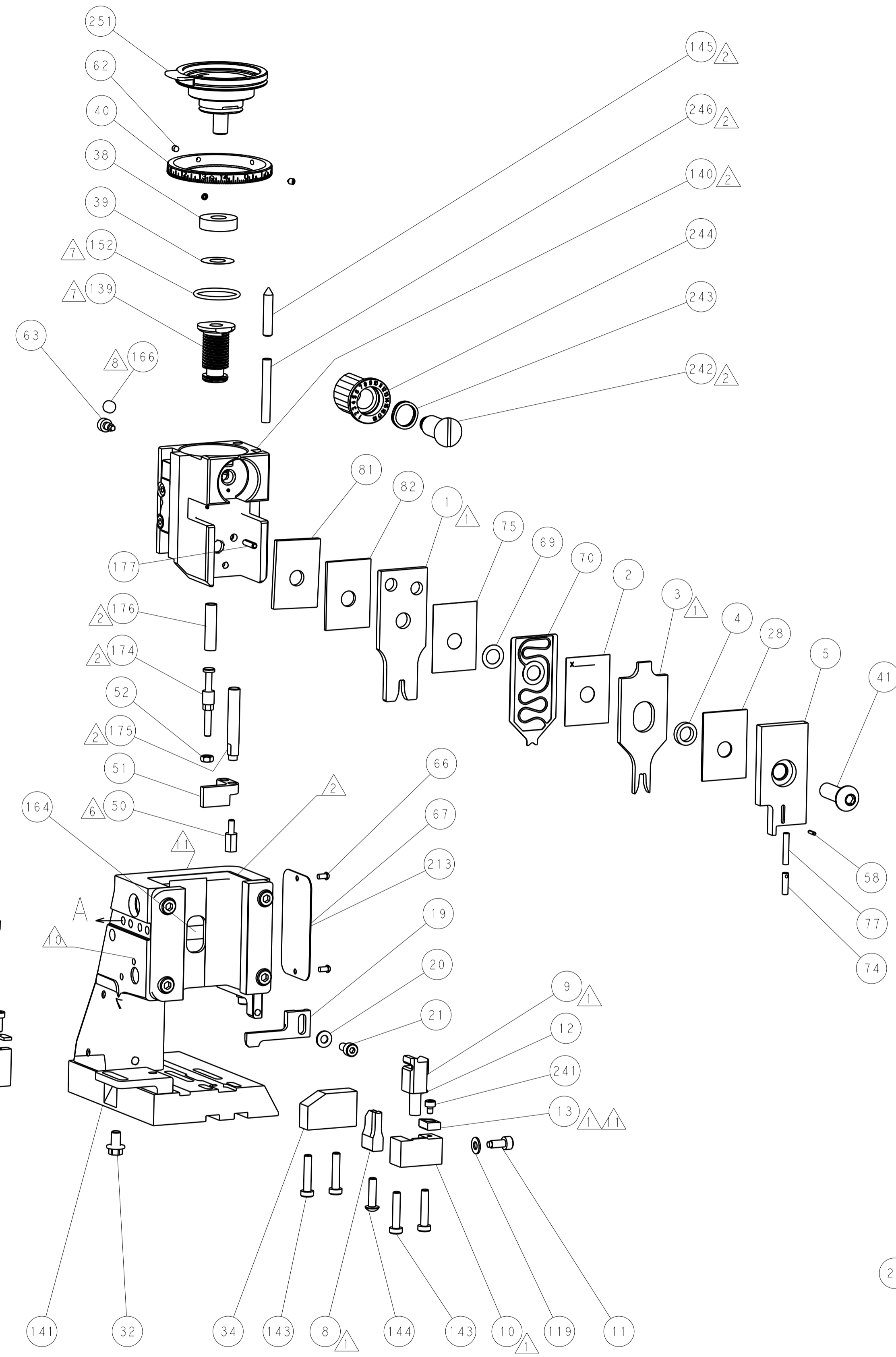
# PNEUMATIC



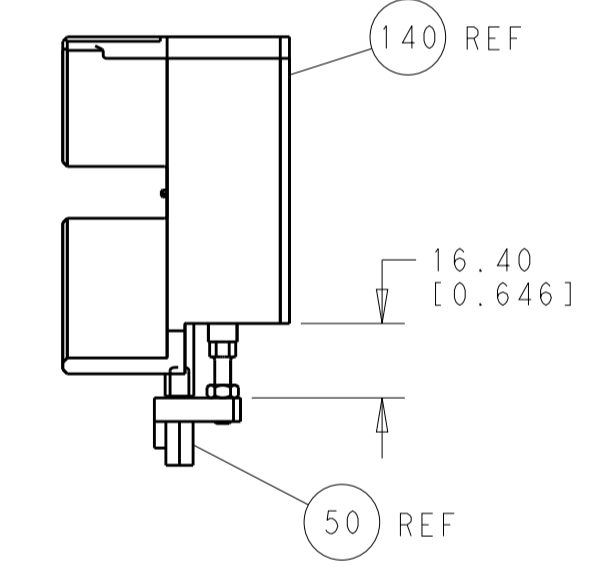
# SERVO LATCH PLATE



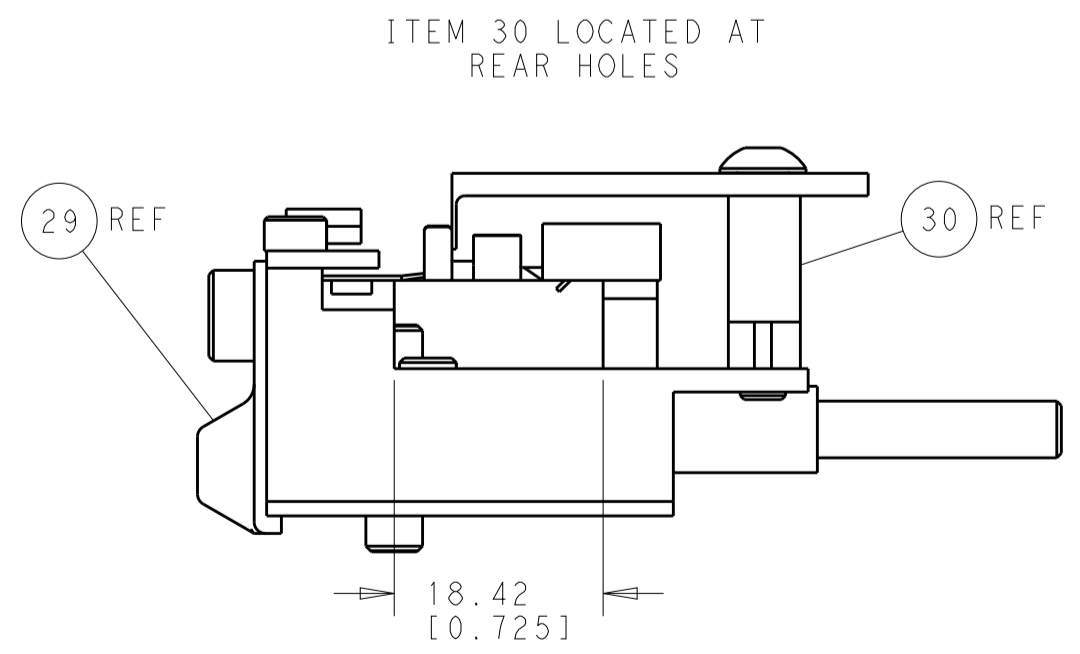
# CAM POSITIONS



TERMINAL SUPPORT LOCATION



HOLDDOWN SET-UP



FEED TRACK POSITION GUIDE BY INSULATION BARREL

**PACIFIC VERSION**  
 Shown on sheets 3 of 4 & 4 of 4  
 (Atlantic version shown on sheets 1 of 4 & 2 of 4)

DIMENSIONS:		TOLERANCES UNLESS OTHERWISE SPECIFIED:		DWN R. O. WILSON 08MAY2012		TE Connectivity	
mm	0 PLC ±0.1	1 PLC ±0.1	2 PLC ±0.02	3 PLC ±0.005	4 PLC ±0.0005	APVD T. L. ELFIN 09MAY2012	Harrisburg, PA 17105-3608
MATERIAL:		FINISH:		NAME Ocean Side Feed Applicator		RESTRICTED TO	
				SIZE CAGE CODE DRAWING NO. A1 00779 C=2151653		SCALE 1:1 SHEET 4 OF 4 REV A	
Customer Accessible Production Drawing				Customer Accessible Production Drawing			