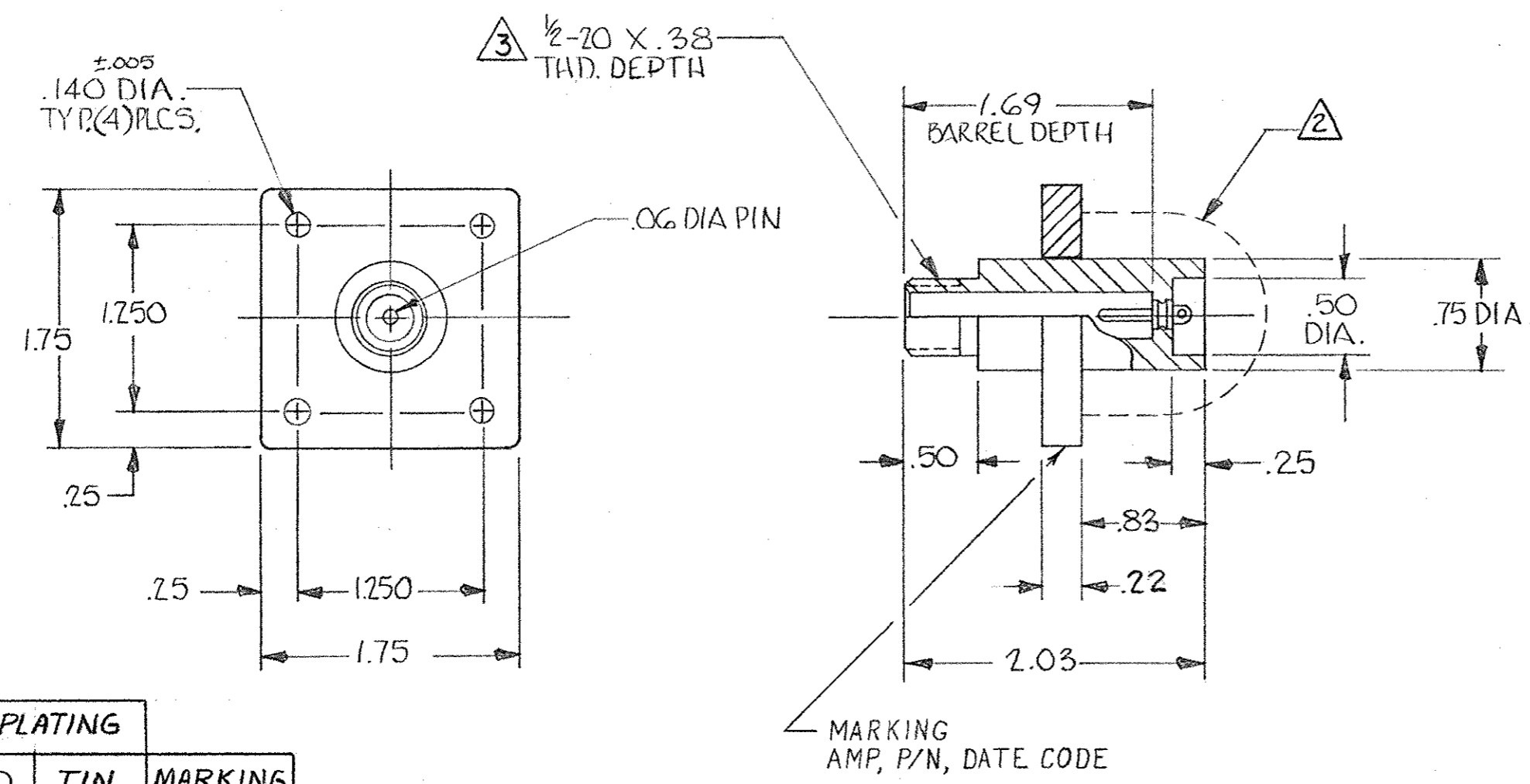


© 1971 BY AMP INCORPORATED. ALL RIGHTS RESERVED. AMP PRODUCTS COVERED BY PATENTS AND/OR PATENTS PENDING.

THIS PRODUCT DESIGNED AND BUILT BY AMP INCORPORATED. NO LICENSE TO USE THAT DESIGN IN MANUFACTURE, OR TO USE ANY ISSUED OR PENDING PATENTS WHICH ARE INVOLVED, IS IMPLIED.

REVISIONS				
ZONE	LTR	DESCRIPTION	DATE	APPROVED
C		REVISED & REDRAWN	BW 12-21-71	MJB
D		REV. NOTE 1	LWS 10-17-73	JPA
E		.22 WAS .25	11-27-74	JPA
F		ADDED MARKING NOTE	KH 8-23-76	MJB
G		ADD -3, -4 NPR 1693	C.D. 3-25-86	MJB
H		REV PER ECN S-3960	4/15/87	KB
J		REV PER OH14-0192-05	1-06	PY



1. RECEPTACLE TO MATE WITH AMP LGH-1L LEAD ASSEMBLY. AVAILABLE SEPARATELY.
 Δ CUSTOMER MUST PROTECT THE RECEPTACLE'S BACK END AGAINST ARC-OVER & BREAK-DOWN.
 Δ PER FEDERAL STANDARD H-28 3 WIRE METHOD. DIMENSION OVER WIRES TO BE: .497-.510.

TERMINAL PLATING

PART NO	TIN-LEAD	GOLD	TIN	MARKING
846814-1	X	—	—	YES
846814-2	—	X	—	YES
846814-3	X	—	—	NO
846814-4	—	X	—	NO
5-846814-1	—	—	X	YES

QTY REQD	QTY REQD	ITEM NO.	DWG SIZE	PART OR IDENTIFYING NO.	NOMENCLATURE OR DESCRIPTION	SYMBOL
PARTS LIST						
UNLESS OTHERWISE SPECIFIED: DIMENSIONS ARE IN INCHES TOLERANCES .00 = ± .02 ANGLES = .000 = ± .005				CONTRACT NO. DR R.H. STANBAUGH 2-22-67 CHK		AMP INCORPORATED CAPITRON DIVISION ELIZABETHTOWN, PENNSYLVANIA
MATERIAL: GLASS EPOXY (MOLDED)				APPD J.W.G. 2-22-67		
FINISH: BLACK				DSGN APPD		NAME LGH-1L FLANGED RECEPT. (FOR BULK-HEAD APPLICATION) 1.69 BARREL DEPTH
NEXT ASSY				OTHER APPD		SIZE C
FINAL ASSY						CODE IDENT NO. 00779
NEXT ASSY						NUMBER 846814
USED ON						SCALE 1/1
QTY REQD				APPLICATION		WT
						SHEET 1 OF 1