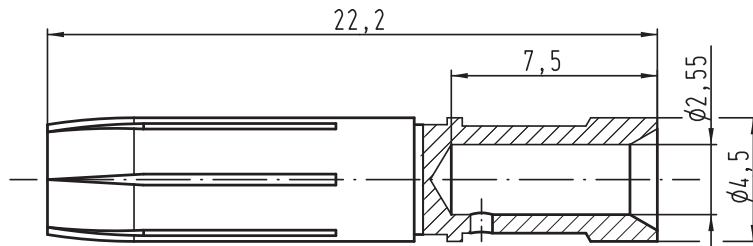
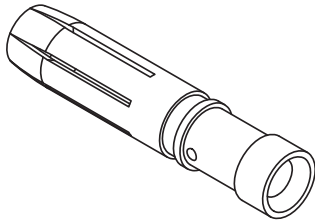


Alle Rechte vorbehalten/ All rights reserved



Leiterquerschnitt/wire gauge: 3mm²/AWG12
 Oberfläche/surface: Gold Tec (NiP + Au)



All Dimensions in mm Original Size DIN A 4		Techn. Character.			Nicht tolerierte Maßel Free size tolerances	
			Dat.	Name	Maßstab/Scale 5:1	Han E-Kontaktbuchse-c <i>Han E-female contact-c</i>
			Detail.	20.04.11 Ho		
			Insp.	Sch		
			Stand.			
A			HARTING Electric GmbH & Co. KG			TB 09 33 000 6406
Mod.	Dat.	Name	D-32339 Espelkamp			
						Blatt/ page
Sub.						