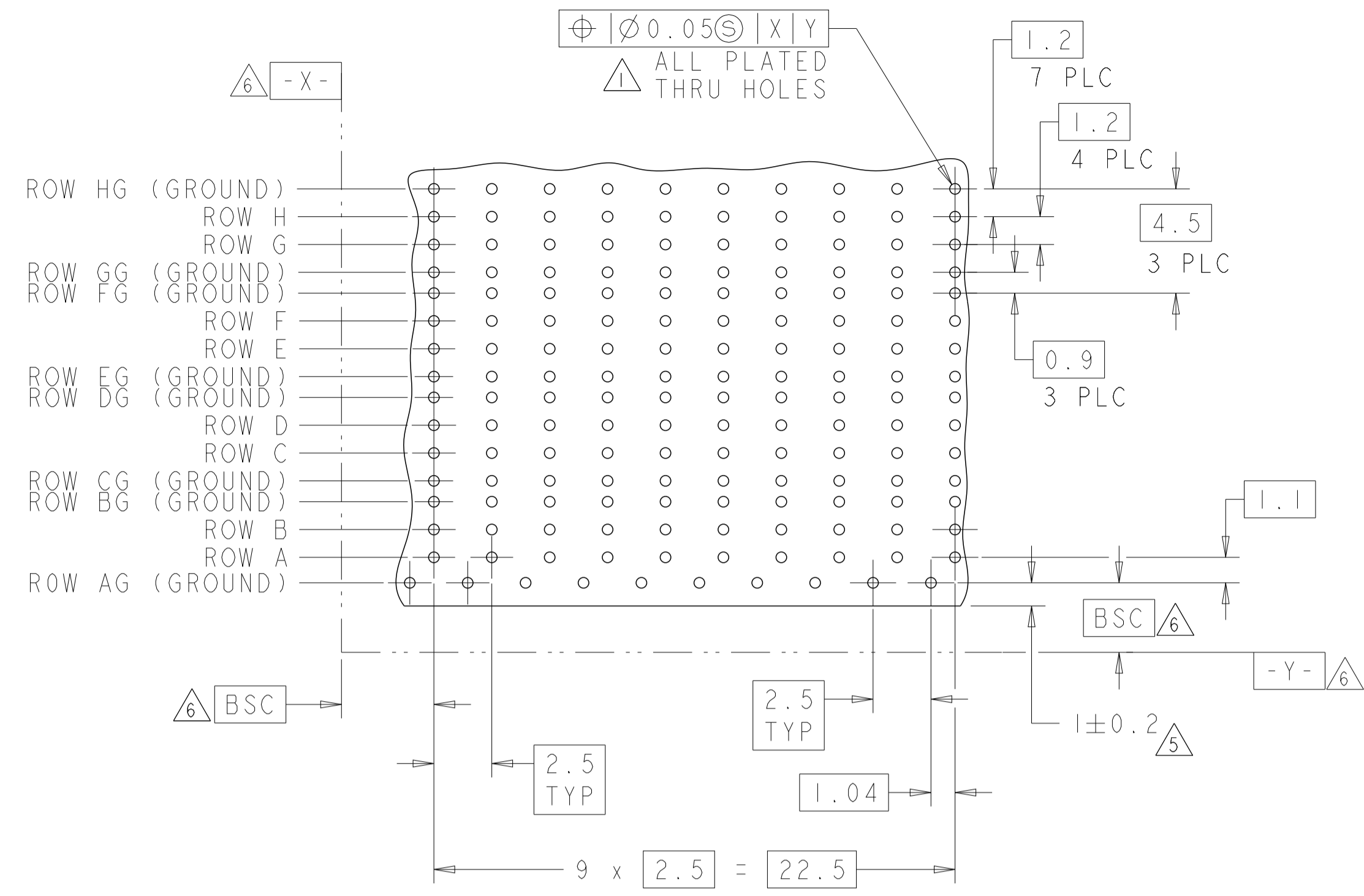
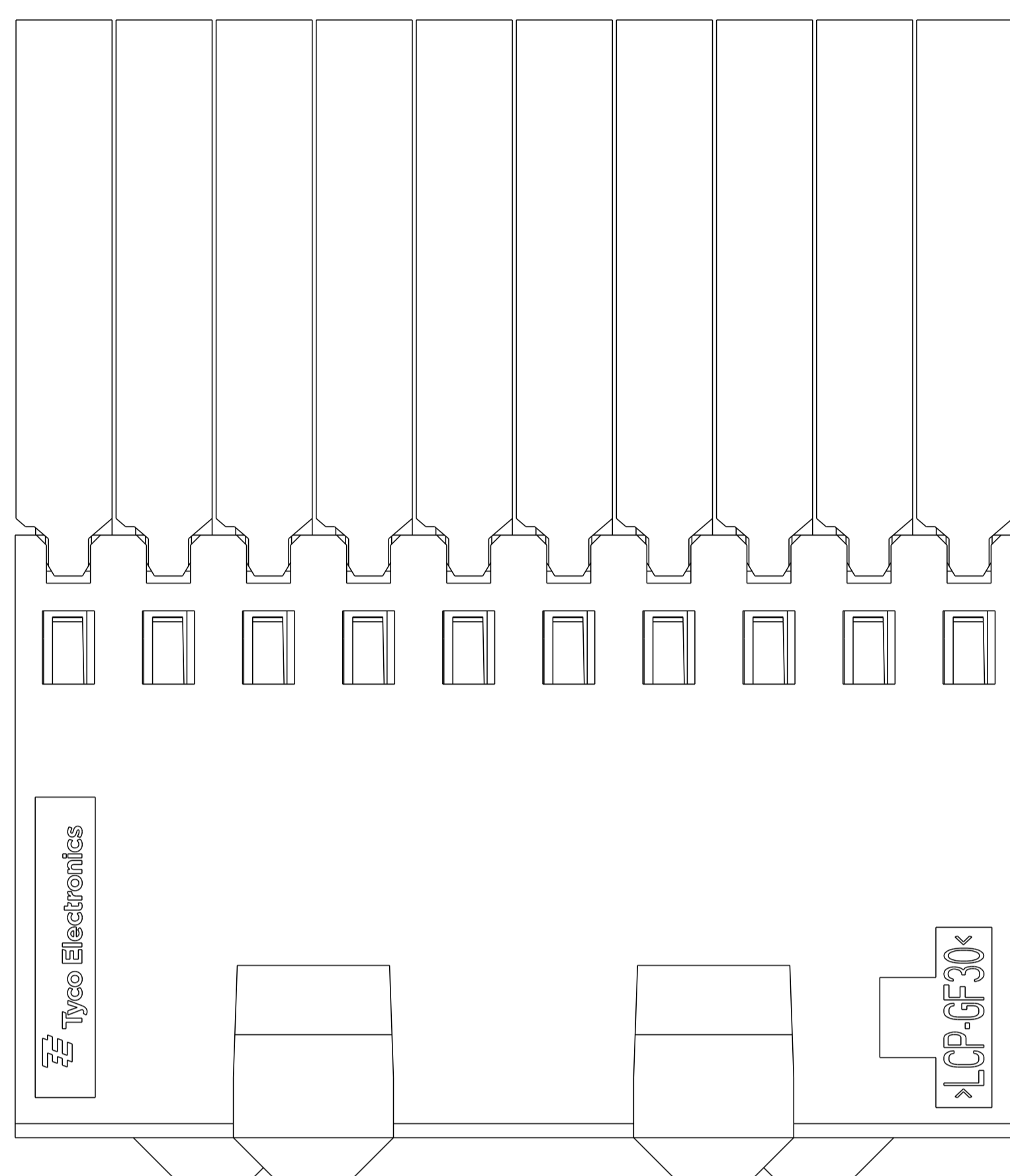
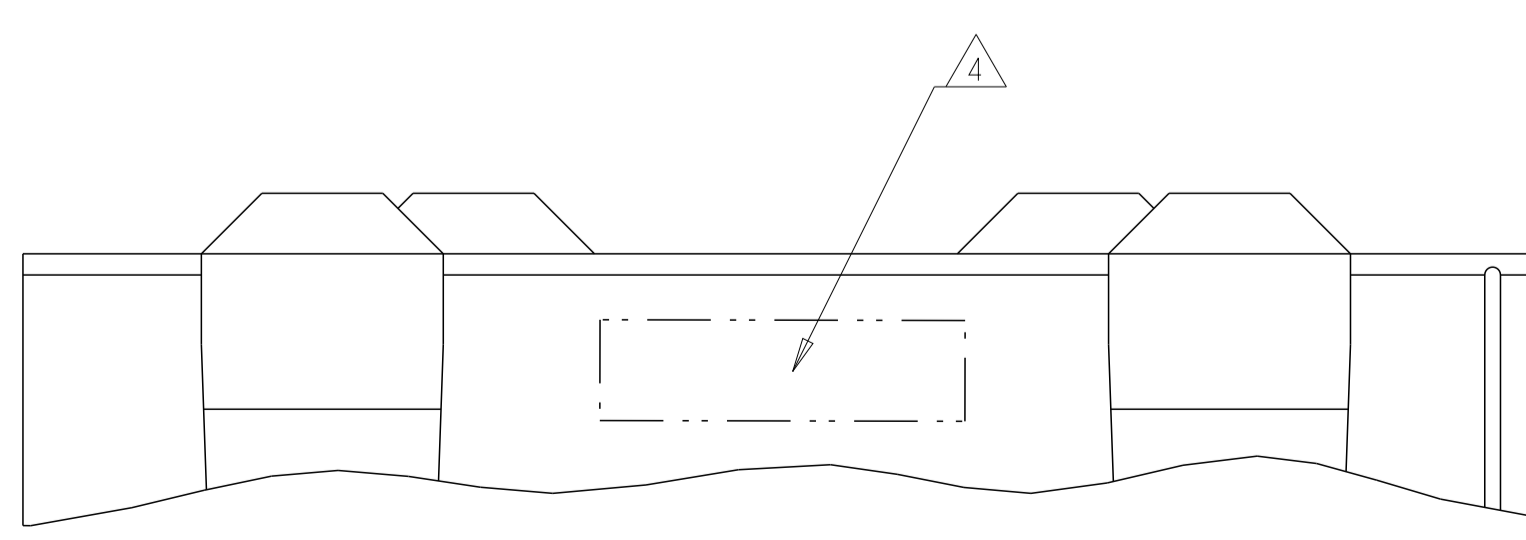
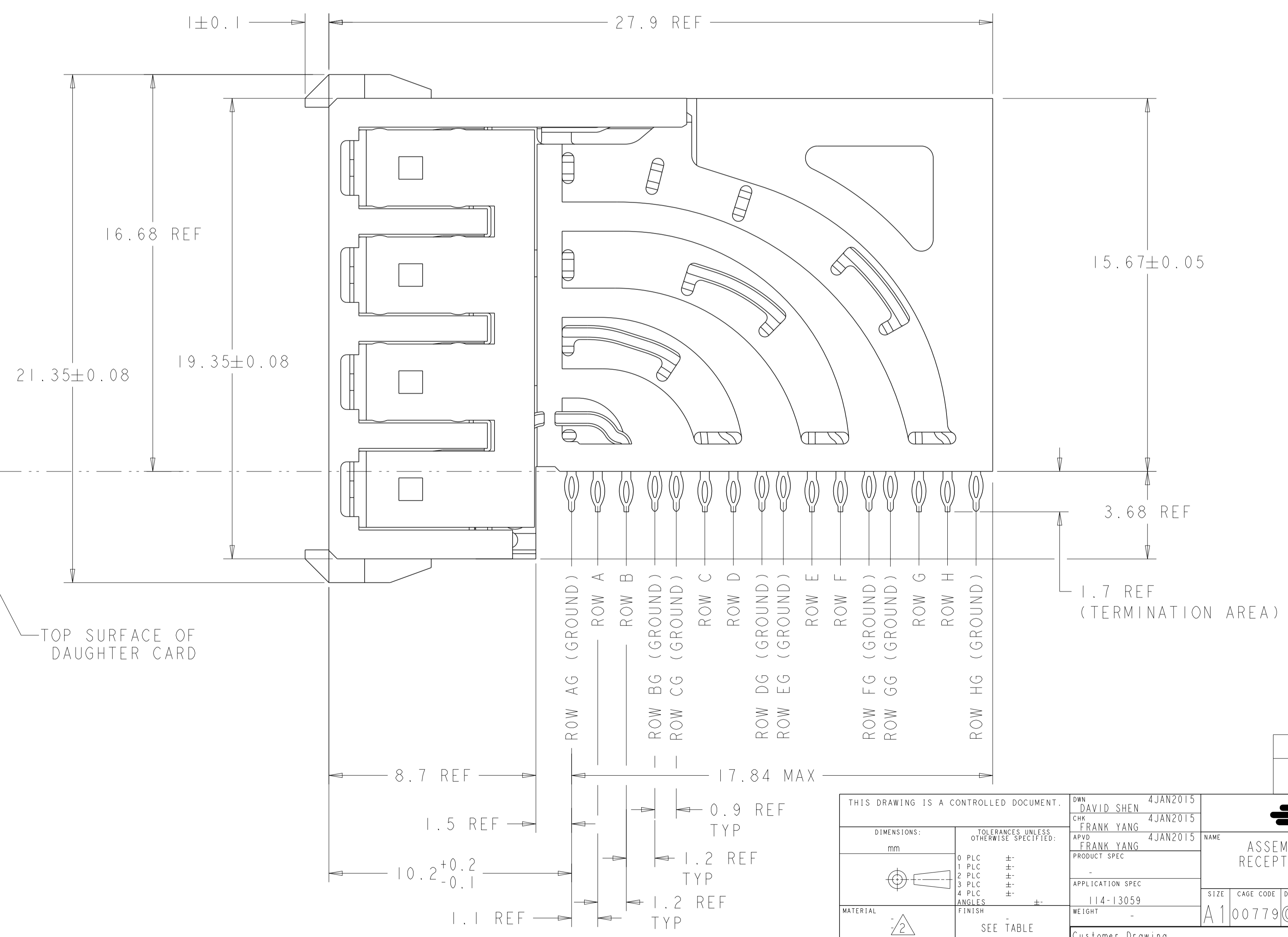
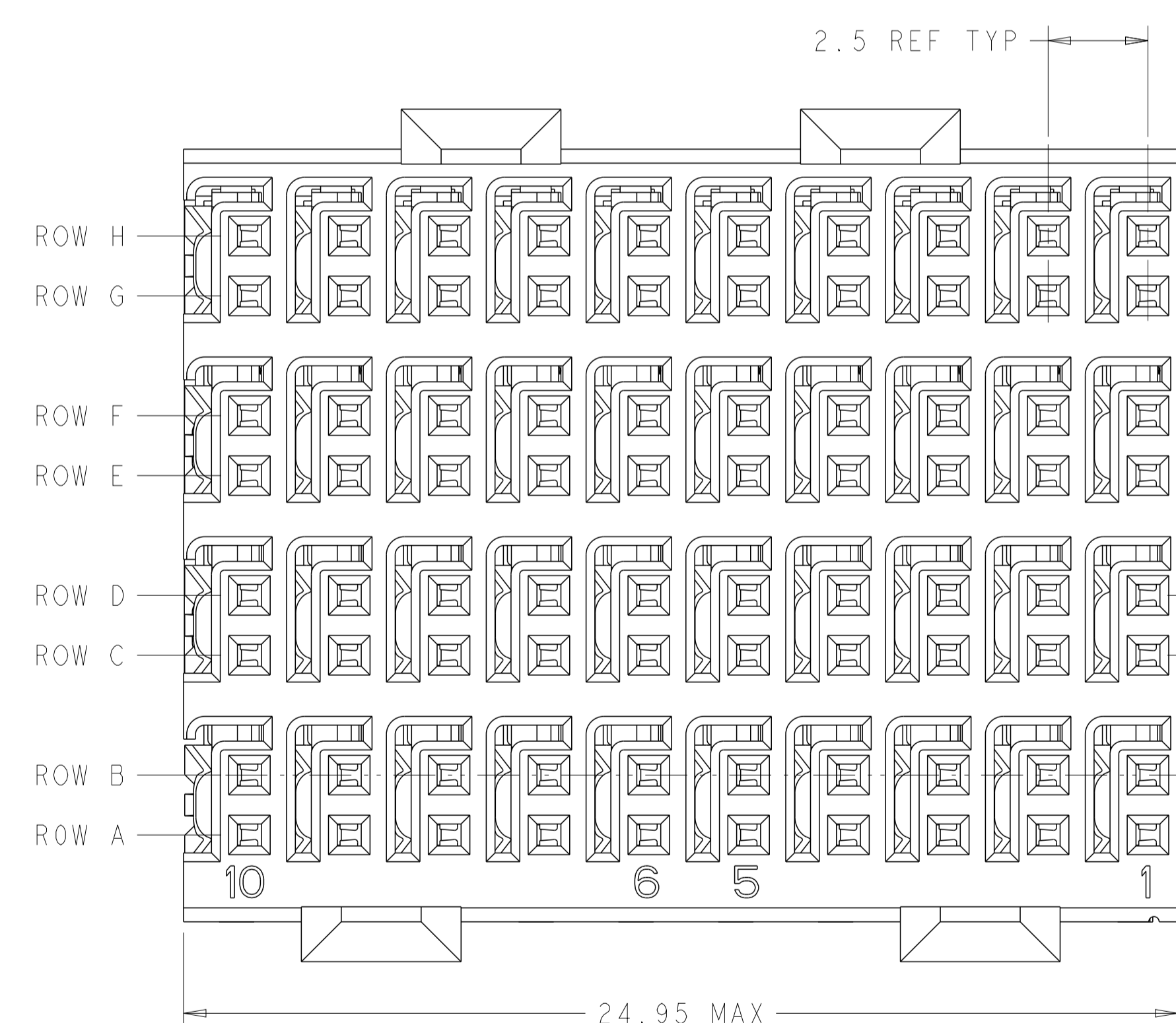


LOC		DIST		REVISIONS			
AD	00	P	LTN	DESCRIPTION	DATE	DMN	APVD
		A		INITIAL RELEASE	19MAR2015	D.S	F.Y



- △ REFERENCE APPLICATION SPEC 114-13059 FOR RECOMMENDED PLATED THRU HOLE DIAMETER AND PLATING THICKNESSES.
- △ MATERIAL:  
 SHIELD - PHOSPHOR BRONZE  
 CONTACT - COPPER-NICKEL-SILICON  
 HOUSING, CHICKLET AND CHICKLET COVER - GLASS FILLED POLYESTER, UL 94V-0 RATED.
- △ FINISH: CONTACT AND SHIELD MATING AREA:  
 MEETS THE PERFORMANCE REQUIREMENTS OF TYCO ELECTRONICS PRODUCT SPECIFICATION, 108-2055-1; BASED ON TELCORDIA GR-1217-CORE, APPLICATIONS IN UNCONTROLLED ENVIRONMENTS.  
 COMPLIANT PIN AREA:  
 0.5µm MIN MATTE TIN OVER BASE PLATING.
- △ CONNECTOR MARKED WITH PART NUMBER AND DATE CODE IN APPROXIMATE AREA SHOWN.
- △ DIMENSION APPLIES TO CENTERLINE OF THRU HOLE.
- △ DATUMS AND BASIC DIMENSIONS ESTABLISHED BY CUSTOMER.
- 7. CONTACT AREA LUBRICATED WITH BELLCORE APPROVED LUBRICANT. TECHNICAL REFERENCE: GR-1217-CORE, ISSUE 1, NOVEMBER 1995.

RECOMMENDED PC BOARD LAYOUT,  
 DAUGHTER BOARD,  
 COMPONENT SIDE SHOWN  
 SCALE 5:1



THIS DRAWING IS A CONTROLLED DOCUMENT.		OWN	DAVID SHEN	4JAN2015
DIMENSIONS:		CHK	FRANK YANG	4JAN2015
mm		APVD	FRANK YANG	4JAN2015
0 PLC	±	NAME		
1 PLC	±	ASSEMBLY, Z-Pack HM-eZD+ RECEPTACLE, 4 PAIR, 10 COLUMN		
2 PLC	±	PRODUCT SPEC		
3 PLC	±	APPLICATION SPEC		
4 PLC	±	114-13059		
ANGLES	±	SIZE	CAGE CODE	DRAWING NO
		WEIGHT	A100779	2170903
MATERIAL	△	Customer Drawing		
FINISH	△	SCALE - SHEET 1 OF 1 REV A		

△	2170903-1
FINISH	PART NUMBER

