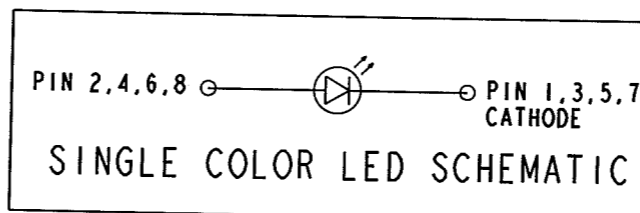
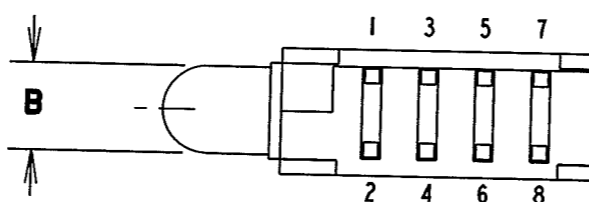
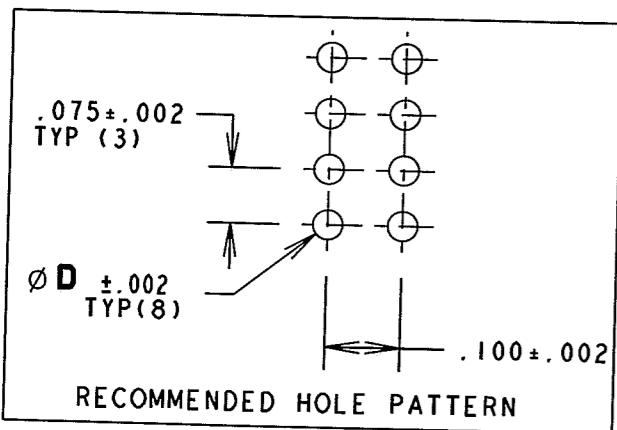
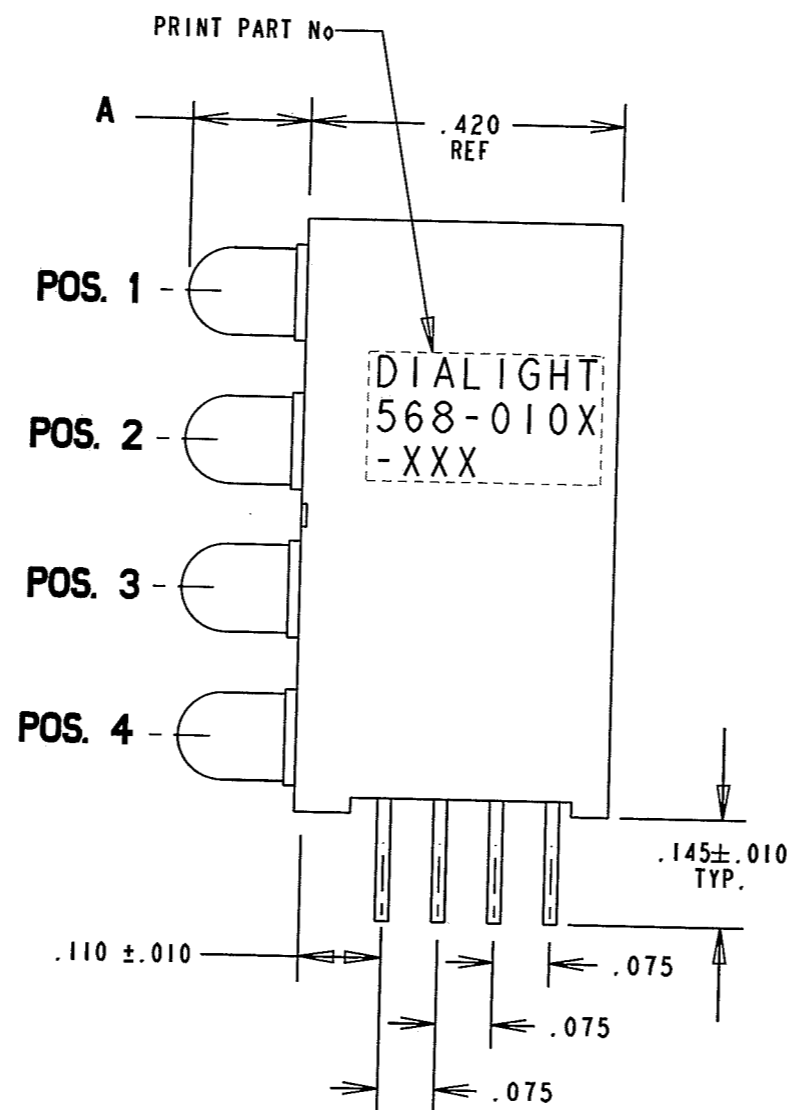
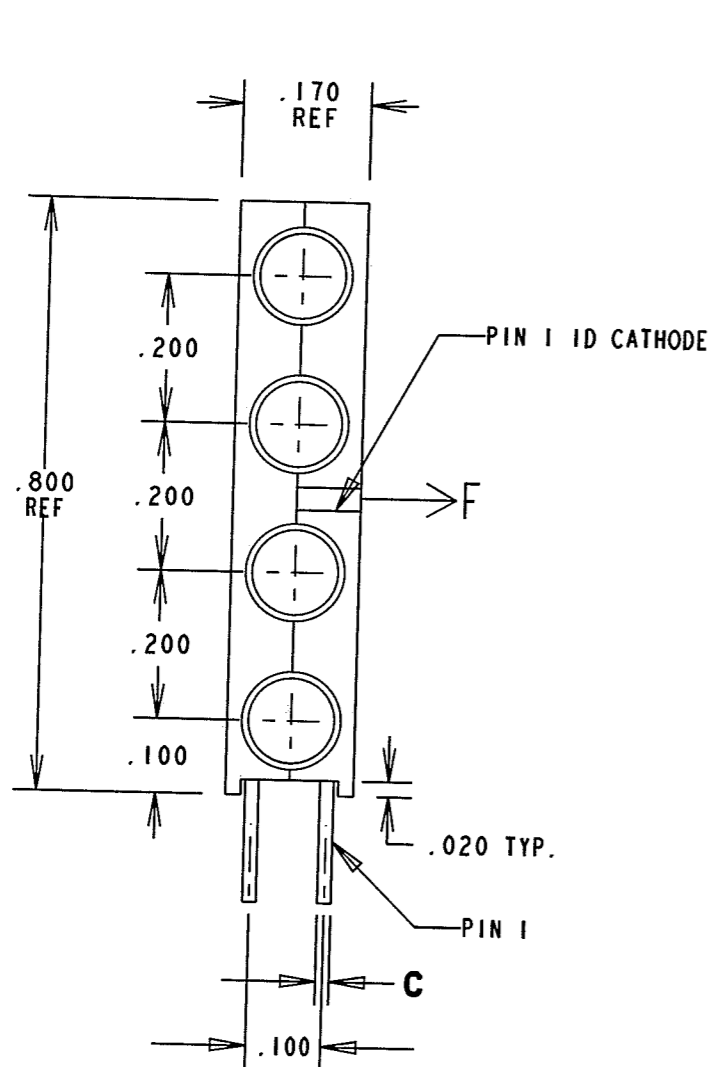


PART NUMBER	POS. 1	POS. 2	POS. 3	POS. 4
568-0107-777	ORANGE	ORANGE	ORANGE	ORANGE
568-0108-023	BLUE	•• BLANK ••	GREEN	YELLOW
568-0108-333	BLUE	YELLOW	YELLOW	YELLOW

LED	A	B	C	D
BLUE	.156	.110	.020	.043
GREEN	.150	.118	.018	.040
YELLOW	.150	.118	.018	.040
ORANGE	.150	.115	.018	.040

REV	ECN NO	REVISIONS	DRN	CKD	APP	DATE
A	—	NEW RELEASE	AV	DC	N.O.	4-19-00
B	—	ADDED THE WORD CATHODE TO NOTE PIN 1, CHANGED ORDER OF PIN NUMBERS, UPDATED DWG FORMAT	SM			1-22-08



OPERATING CHARACTERISTICS AT 25°C AMBIENT						
CHARACTERISTICS	COLOR	MIN	TYP	MAX	UNITS	TEST CONDITIONS
LUMINOUS INTENSITY	BLUE	6.3		20	mcd	I F = 10 mA
	GREEN	4.7	12.6			
	YELLOW	7.4	10.0			
	ORANGE	3.4	7.0			
FORWARD VOLTAGE	BLUE		3.5	4.2	V	I F = 10 mA
	GREEN		2.1	2.8		I F = 20 mA
	YELLOW		2.1	2.8		I F = 10 mA
	ORANGE	1.5	2.2	3.0		
PEAK WAVELENGTH	BLUE		428		nm	
	GREEN		565			
	YELLOW		585			
	ORANGE		600			
VIEWING ANGLE	BLUE		70		Degree	
	GREEN		60			
	YELLOW		60			
	ORANGE		60			

- NOTES:
- LEADS TO FIT INTO HOLES SPACED AS PER HOLE PATTERN
  - LEADS TO BE FREE OF DEFORMATION AFTER BENDING AND CUTTING
  - PIN NUMBERS FOR REFERENCE ONLY, DESIGNATION NON-EXISTENT ON PART
  - LED LEAD DIMENSIONS SHOWN ARE MEASURED AT HOUSING EXIT
  - DIALIGHT PART NUMBER:  
568-0107-777 568-0108-023 568-0108-333

THIS DRAWING AND THE CONTENTS HEREIN ARE CONFIDENTIAL AND THE SOLE PROPERTY OF DIALIGHT. REPRODUCTION OF THIS DRAWING OR CONSTRUCTION OF ANY PARTS WITHIN THIS DRAWING ARE FORBIDDEN WITHOUT THE WRITTEN CONSENT OF DIALIGHT.

SCALE: DRAWING SCALE ALL DIM'S IN: INCHES (MM)	DRAWING NUMBER C-16681	REV B
TOLERANCES: UNLESS OTHERWISE SPECIFIED FRACTIONS: ±1/64 DECIMALS (.XX): ±.01 DECIMALS (.XXX): ±.005 DECIMALS (.XXXX): ±.0005 ANGLES: ±1°	TITLE 3mm QUAD LEVEL CBI - CLAMSHELL	
FINISH:	MATERIAL	
FSCM 83330	Dialight 1501 ROUTE 34 SOUTH FARMINGDALE, NJ 07727	
SHEET 11 OF 11 FAMILY TABLE:		