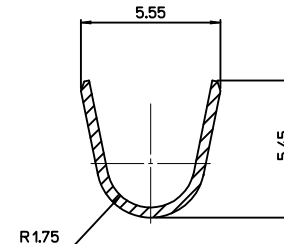
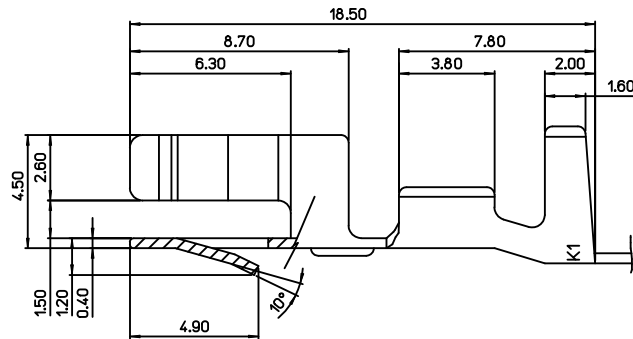


SECTION B-B'



SECTION A-A'

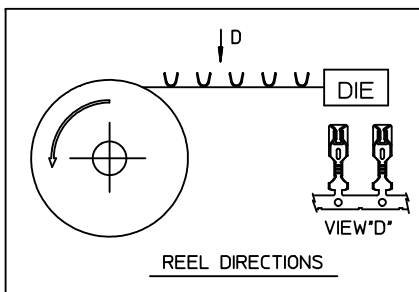


NOTES

- 1.MATERIAL : BRASS(C26000)
- 2.FINISH : PRE-TIN PLATING
- 3.APPLICABLE HOUSING SOCKET : 68147
- 4.APPLICABLE WIRE SEAL : 49505-9001
- 5.WEDGE BULB INSERTION FORCE : 7.0 Kgf MAX.
WEDGE BULB RETENSION FORCE : 0.5 Kgf MIN.
- 6.APPLICABLE WEDGE BASE CAP : W2.1X9.5d(W16W)
- 7.APPLICABLE WIRE SIZE : 0.5~0.85mm²

<TABLE 1>

354779702	35477-9702
MATERIAL NO.	ORDER NO.



NEW RELEASED
 EC NO: KOR2010-0010
 DRWINEOK IM 2009/07/29
 CHKD:BCYOON 2009/07/30
 APPR:YUNS IKKIM 2009/07/30

REV	DESCRIPTION
A	

QUALITY SYMBOLS	GENERAL TOLERANCES (UNLESS SPECIFIED)	DIMENSION STYLE	SCALE	DESIGN UNITS	THIRD ANGLE PROJECTION
		MM ONLY	5:1	METRIC	
▽=0		mm			
∇=0		INCH			
	4 PLACES ± --- ± ---	DRAWN BY	DATE	WEDGE TERMINAL (SPECIAL TYPE) MOLEX INCORPORATED	
	3 PLACES ± --- ± ---	SMKIM	2005/08/09		
	2 PLACES ± 0.2 ± ---	CHECKED BY	DATE		
	1 PLACE ± --- ± ---	BCYOON	2005/08/09		
	ANGULAR ± 1 °	APPROVED BY	DATE	MOLEX INCORPORATED RSD-35477-002	
		CWLEE	2005/08/09		
	DRAFT WHERE APPLICABLE MUST REMAIN WITHIN DIMENSIONS	MATERIAL NO.	DOCUMENT NO.	SHEET NO.	
		SEE TABLE 1	RSD-35477-002	1 OF 1	

THIS DRAWING CONTAINS INFORMATION THAT IS PROPRIETARY TO MOLEX INCORPORATED AND SHOULD NOT BE USED WITHOUT WRITTEN PERMISSION