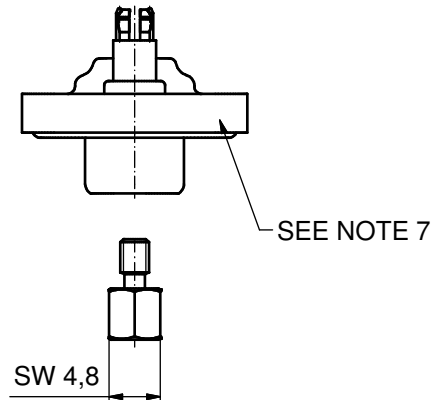
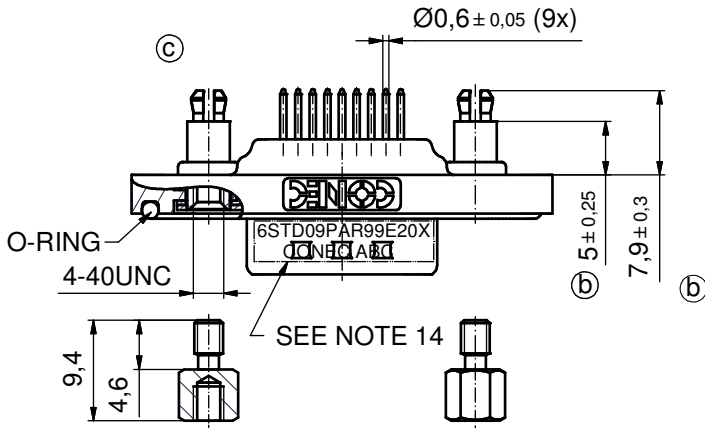
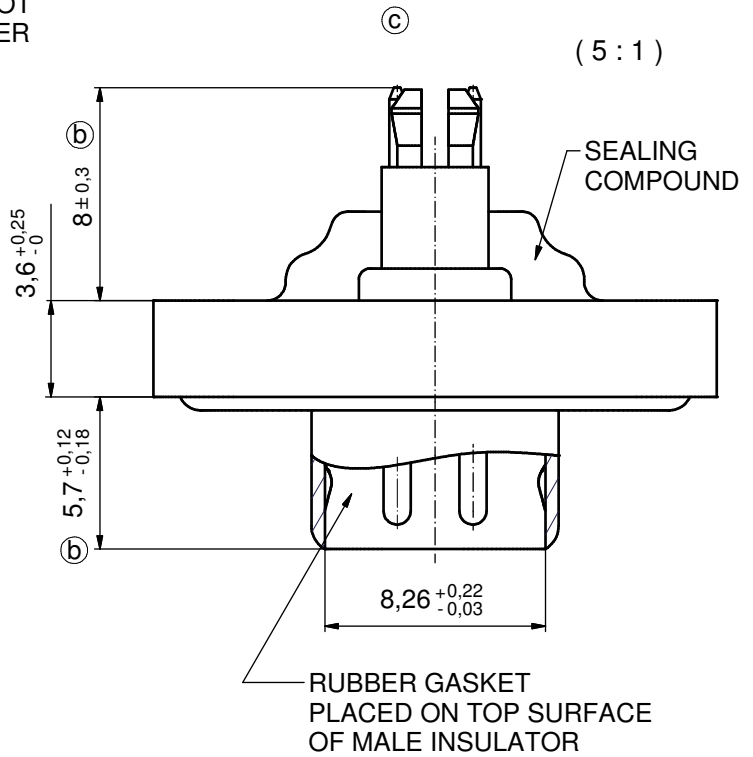
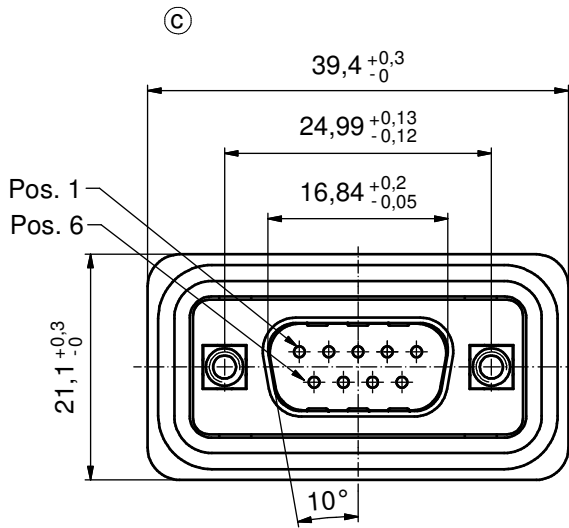
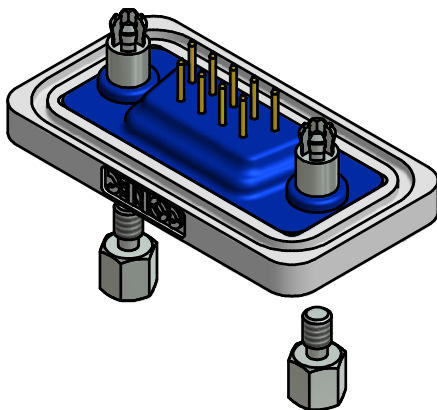


AT ALL TIMES WATER RESISTANT CONNECTORS NOT IN USE SHOULD BE COVERED WITH A CONEC WATER RESISTANT CAP OR WATER TIGHT HOOD.



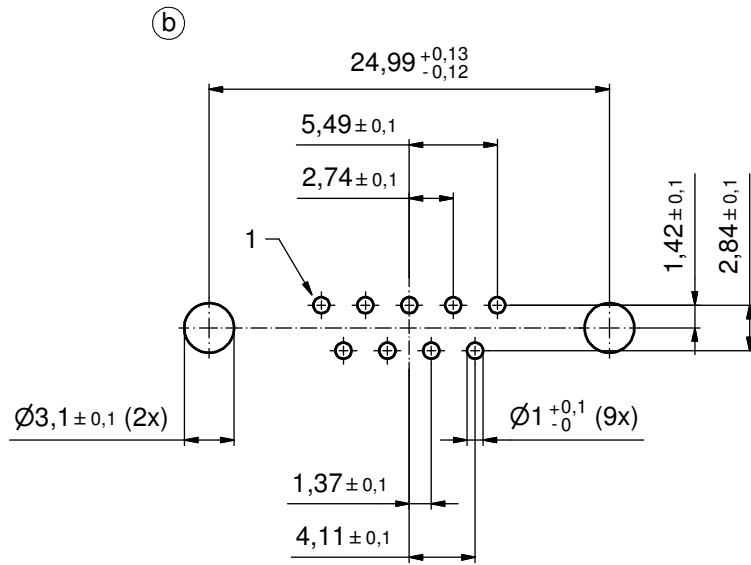
NOTES: (C)

1. FOR WAVESOLDERING (SOLDER BATH TEMPERATURE 240°C FOR 5 SEC. AND SOLDER PREHEAT 120°C FOR 120 SEC.)
2. METALSHELLS: COPPER ALLOY; min. 315µm TIN over 40-80µm NICKEL
3. INSULATORS: PBT GF UL 94 V-0; BLACK
4. CONTACTS: COPPER ALLOY
PLATING: GOLD FLASH over NICKEL
5. THREADED SPACER CLIPS: COPPER ALLOY; min. 200µm TIN over 80µm NICKEL
PCB-HOLE: $\varnothing 3,1 \pm 0,1$; PCB THICKNESS 1,6mm
6. COLLARS: COPPER ALLOY; min. 200µm TIN over 80µm NICKEL
7. FRAME: ZINC DIE CAST; NICKEL PLATED
8. O-RING: SILICON; BLUE
9. RUBBER GASKET: TPE; BLACK
10. SEALING COMPOUND: PUR; BLUE
11. HEXLOCKING SCREWS: STAINLESS STEEL
12. P.C.B. HOLE DRILLINGS + RECOMMENDED PANEL CUT-OUT ON SHEET 2
13. RECOMMENDED TORQUE FOR MOUNTING SCREW 35Ncm (3.1 in.LB) / max. 40Ncm (3.5 in.LB)
14. CONNECTOR IS PART MARKED: [6STD09PAR99E20X CONEC ABC] (b)

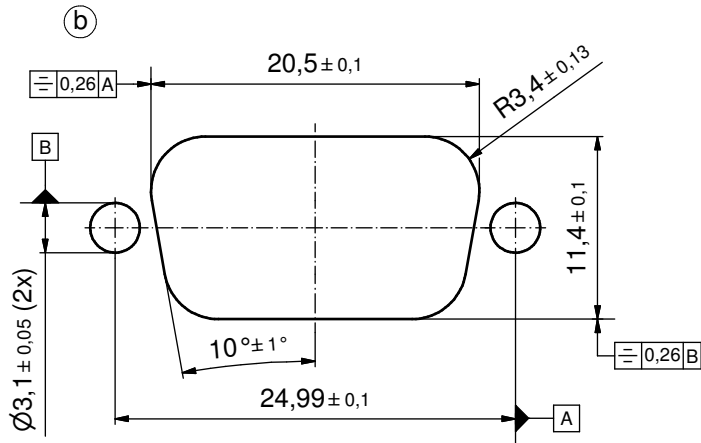


Directive 2002/95/EC RoHS compliant

| | | | | | | | |
|---|-------------|------------|------------|--------------|--------------|--|-----------------|
| THIS DRAWING MAY NOT BE COPIED OR REPRODUCED IN ANY WAY, AND MAY NOT BE PASSED ON TO A THIRD PARTY WITHOUT WRITTEN PERMISSION. OWNERSHIP AND COPYRIGHT OF CONEC GmbH DO NOT ALTER CAD DRAWING BY HAND | tolerance | | dim. in mm | | scale: | 2:1 (5:1) | |
| | | | | | material: | SEE NOTES | |
| | | | date | name | title: | | |
| | | | drawn | 04.04.04 | Lehmenkühler | D-SUB MALE 9pos. SOLDER PIN STRAIGHT with threaded spacer clip and hexlocking screw | |
| | | appd. | 04.02.04 | Mickenbecker | | | |
| | | norm | DIN 41652 | | | | |
| 5 x c | Ä3963 | 11.04.2011 | K.H. | d-old | dwg no: | | DIN-A3 |
| 5 x b | Ä1983 | 31.03.2004 | Mkf. | | | | |
| a | Original | | | | | | sh: 1/8 |
| rev. | description | date | name | CONEC | | part no: | 6STD09PAR99E20X |
| | | | | | | | |

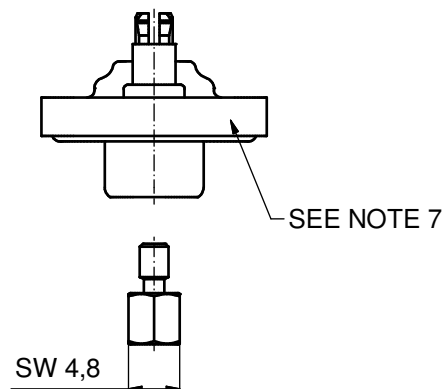
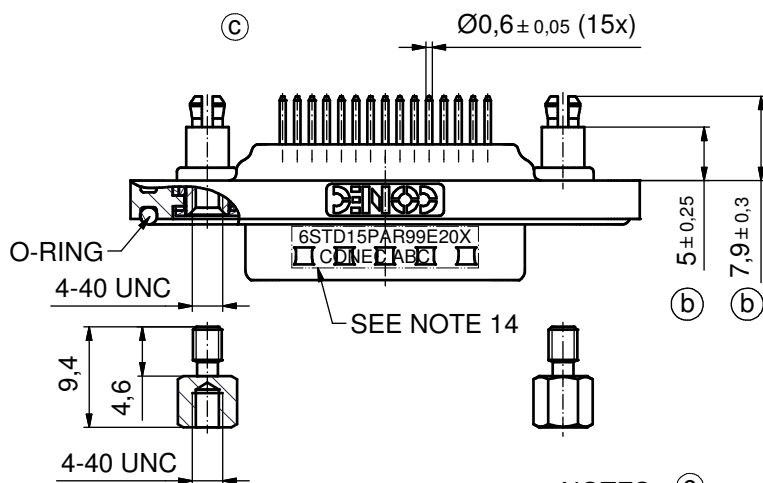
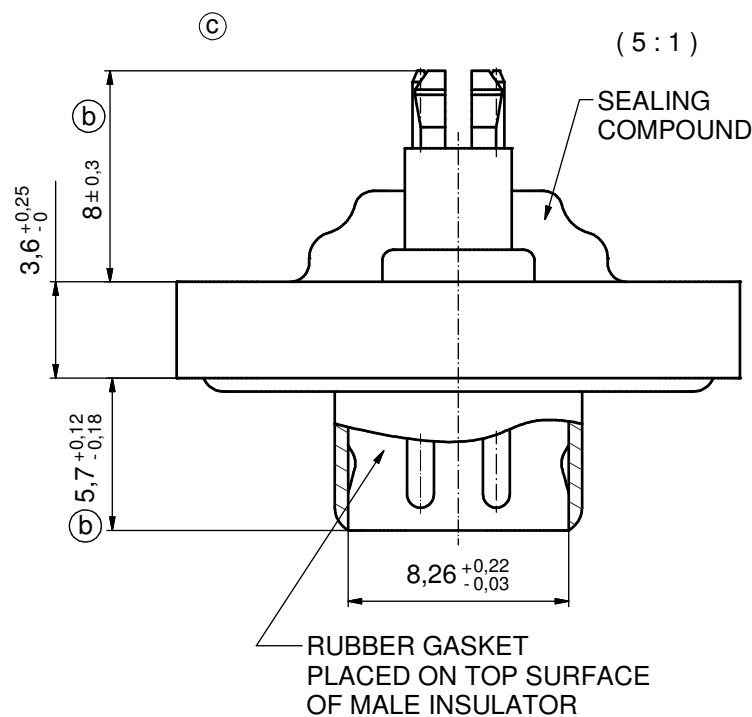
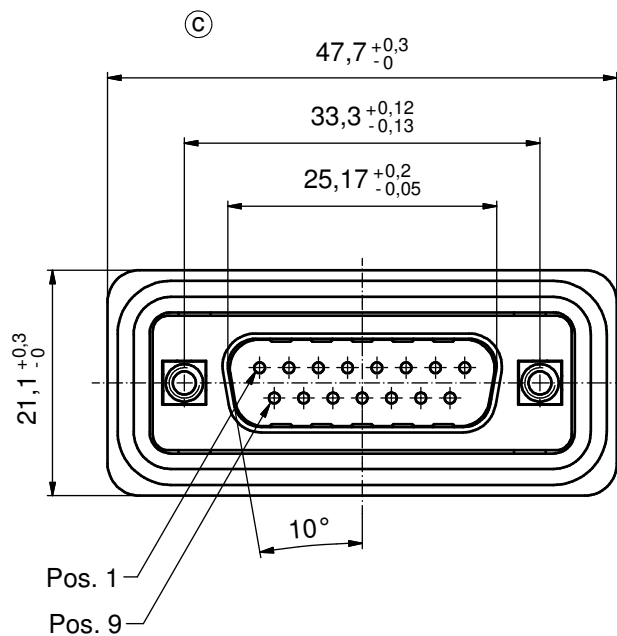


P.C.B. HOLE DRILLINGS
(P.C.B. TOP SIDE)



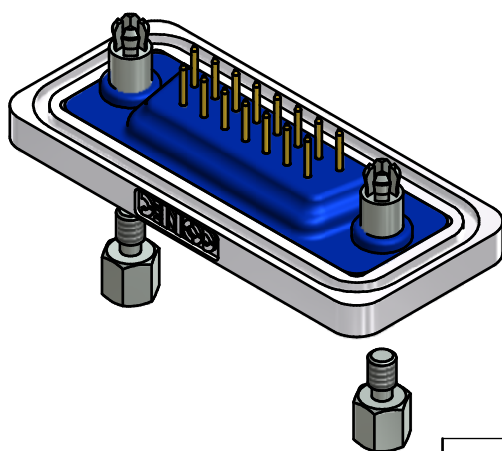
RECOMMENDED PANEL CUT-OUT

| | | | | | | |
|--|-------------|------------|-------|---|----------|-------------------------|
| THIS DRAWING MAY NOT BE COPIED OR REPRODUCED IN ANY WAY, AND MAY NOT BE PASSED ON TO A THIRD PARTY WITHOUT WRITTEN PERMISSION. OWNERSHIP AND COPYRIGHT OF CONEC GmbH DO NOT ALTER CAD DRAWING BY HAND | | | | tolerance | | scale: 3:1 |
| | | | | date | name | material: SEE SHEET 1 |
| | | | | drawn | 04.02.04 | Lehmenkühler |
| | | | | appd. | 04.02.04 | Mickenbecker |
| | | | | norm | | |
| | | | d-old | | | |
| 3 x b | A3963 | 11.04.2011 | K.H. | title: P.C.B. HOLE DRILLINGS RECOMMENDED PANEL CUT-OUT D-SUB MALE 9pos. Solder pin straight | | |
| a | Original | | | | | |
| rev. | description | date | name | | | dwg no: 18K2A245 |
| | | | | | | DIN-A3 sh: 2/8 |
| | | | | | | part no: SEE SHEET 1 |



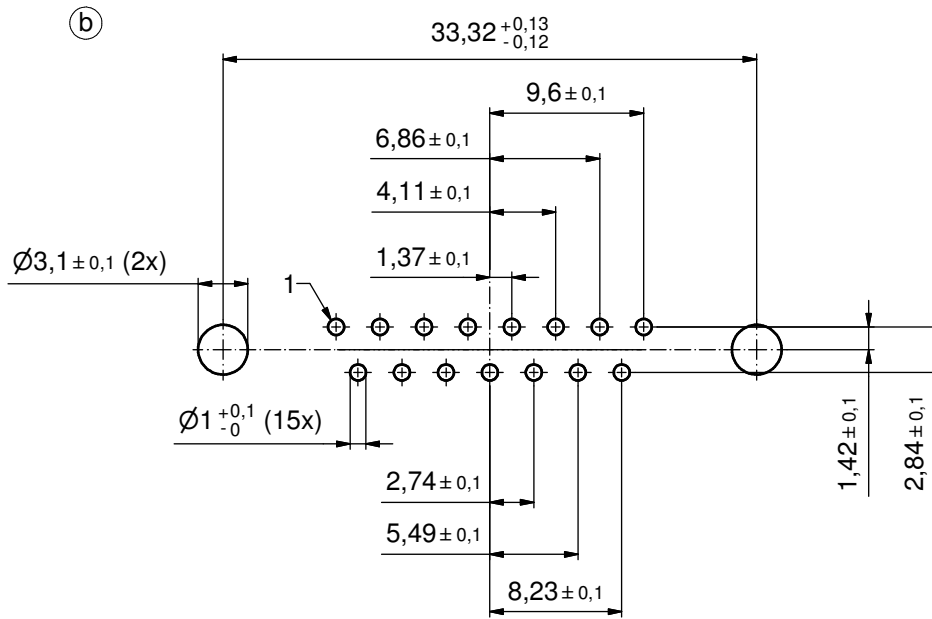
NOTES: (C)

1. FOR WAVESOLDERING (SOLDER BATH TEMPERATURE 240°C FOR 5 SEC. AND SOLDER PREHEAT 120°C FOR 120 SEC.)
2. METALSHELLS: COPPER ALLOY; min. 315µm TIN over 40-80µm NICKEL
3. INSULATORS: PBT GF UL 94 V-0; BLACK
4. CONTACTS: COPPER ALLOY
PLATING: GOLD FLASH over NICKEL
5. THREADED SPACER CLIPS: COPPER ALLOY; min. 200µm TIN over 80µm NICKEL
PCB-HOLE: $\phi 3,1 \pm 0,1$; PCB THICKNESS 1,6mm
6. COLLARS: COPPER ALLOY; min. 200µm TIN over 80µm NICKEL
7. FRAME: ZINC DIE CAST; NICKEL PLATED
8. O-RING: SILICON; BLUE
9. RUBBER GASKET: TPE; BLACK
10. SEALING COMPOUND: PUR; BLUE
11. HEXLOCKING SCREWS: STAINLESS STEEL
12. P.C.B. HOLE DRILLINGS + RECOMMENDED PANEL CUT-OUT ON SHEET 2
13. RECOMMENDED TORQUE FOR MOUNTING SCREW 35Ncm (3.1 in.LB) / max. 40Ncm (3.5 in.LB)
14. CONNECTOR IS PART MARKED: [6STD15PAR99E20X CONEC ABC] (b)

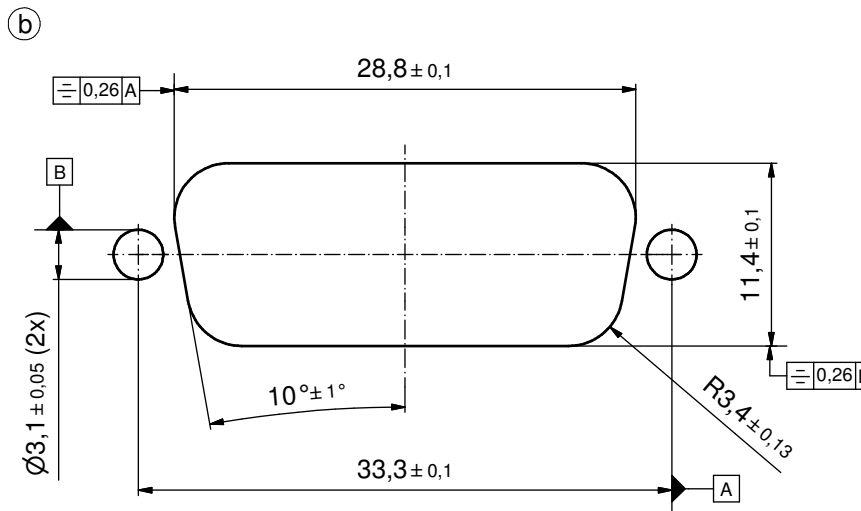


Directive 2002/95/EC RoHS compliant

| | | | | | | | |
|---|-------------|------------|------------|--------------|--------------|-----------------|---|
| THIS DRAWING MAY NOT BE COPIED OR REPRODUCED IN ANY WAY, AND MAY NOT BE PASSED ON TO A THIRD PARTY WITHOUT WRITTEN PERMISSION. OWNERSHIP AND COPYRIGHT OF CONEC GmbH DO NOT ALTER CAD DRAWING BY HAND | tolerance | | dim. in mm | | scale: | 2:1 (5:1) | |
| | | | | | material: | SEE NOTES | |
| | | | date | name | | title: | |
| | | | drawn | 04.02.04 | Lehmenkühler | | D-SUB MALE 15pos. SOLDER PIN STRAIGHT with threaded spacer clip and hexlocking screw |
| | | appd. | 04.02.04 | Mickenbecker | | | |
| | | norm | DIN 41652 | | | | |
| 5 x c | Ä3963 | 11.04.2011 | K.H. | d-old | dwg no: | DIN-A3 | |
| 5 x b | Ä1983 | 31.03.2004 | Mkf. | | 18K2A245 | (C)sh: 3/8 | |
| a | Original | | | | part no: | 6STD15PAR99E20X | |
| rev. | description | date | name | CONEC | | | |



P.C.B. HOLE DRILLINGS
(P.C.B. TOP SIDE)



RECOMMENDED PANEL CUT-OUT

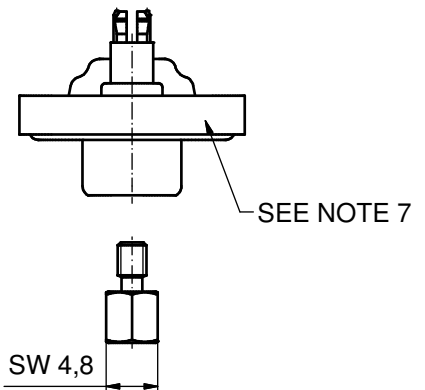
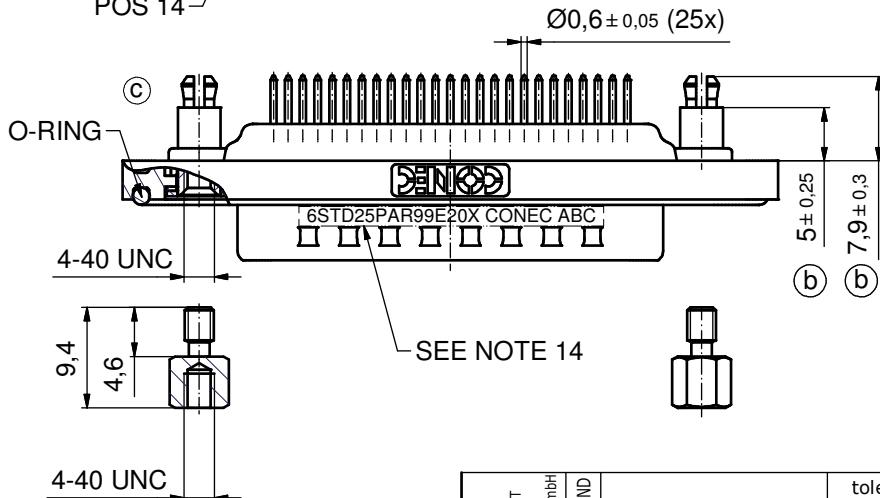
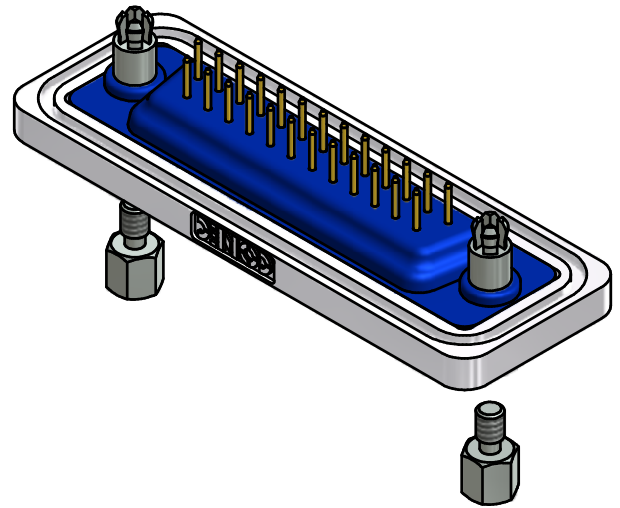
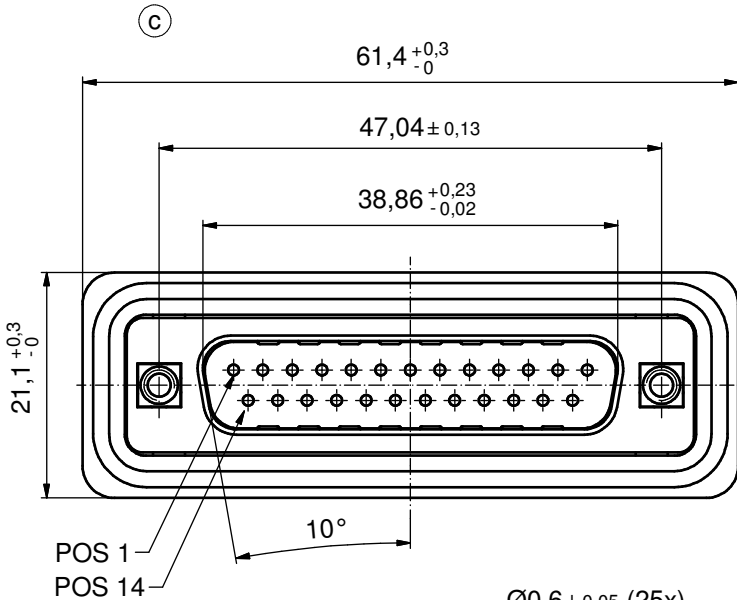
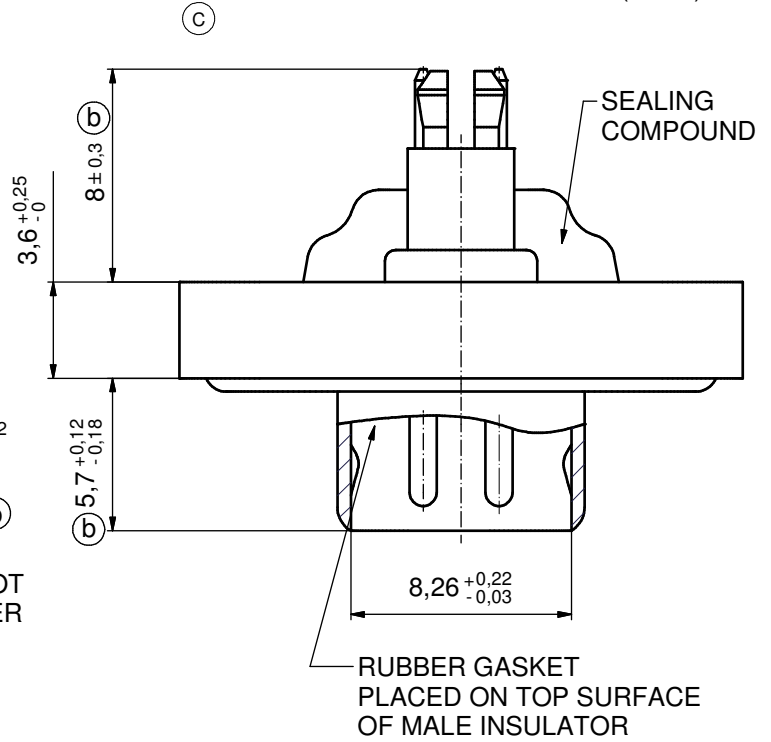
| | | | | | | |
|--|-------------|------------|------|---------------------------|--------------|--|
| THIS DRAWING MAY NOT BE COPIED OR REPRODUCED IN ANY WAY, AND MAY NOT BE PASSED ON TO A THIRD PARTY WITHOUT WRITTEN PERMISSION. OWNERSHIP AND COPYRIGHT OF CONEC GmbH DO NOT ALTER CAD DRAWING BY HAND | | | | tolerance | | scale: 3:1 |
| | | | | dim. in mm | | material: SEE SHEET 3 |
| | | | | date | name | title: P.C.B. HOLE DRILLINGS RECOMMENDED PANEL CUT-OUT D-SUB Male 15pos. Solder pin straight |
| | | | | drawn 04.02.04 | Lehmenkühler | |
| | | | | appd. 04.02.04 | Mickenbecker | |
| | | | | norm | DIN 41652 | |
| | | | | d-old | | |
| 3 x b | A3963 | 11.04.2011 | K.H. | dwg no: | | |
| a | Original | | | 18K2A245 | | |
| rev. | description | date | name | part no: SEE SHEET 3 | | |
| | | | | CONEC [®] | | |
| | | | | | DIN-A3 | |
| | | | | | (b) sh: 4/8 | |

NOTES: (C)

1. FOR WAVESOLDERING (SOLDER BATH TEMPERATURE 240°C FOR 5 SEC. AND SOLDER PREHEAT 120°C FOR 120 SEC.)
2. METALSHELLS: COPPER ALLOY; min. 315µin TIN over 40-80µin NICKEL
3. INSULATORS: PBT GF UL 94 V-0; BLACK
4. CONTACTS: COPPER ALLOY
PLATING: GOLD FLASH over NICKEL
5. THREADED SPACER CLIPS: COPPER ALLOY;
min. 200µin TIN over 80µin NICKEL
PCB-HOLE: $\varnothing 3,1 \pm 0,1$; PCB THICKNESS 1,6mm
6. COLLARS: COPPER ALLOY; min. 200µin TIN over 80µin NICKEL
7. FRAME: ZINC DIE CAST; NICKEL PLATED
8. O-RING: SILICON; BLUE
9. RUBBER GASKET: TPE; BLACK
10. SEALING COMPOUND: PUR; BLUE
11. HEXLOCKING SCREWS: STAINLESS STEEL
12. P.C.B. HOLE DRILLINGS + RECOMMENDED PANEL CUT-OUT ON SHEET 2
13. RECOMMENDED TORQUE FOR MOUNTING SCREW 35Nm (3.1 in.LB) / max. 40Nm (3.5 in.LB)
14. CONNECTOR IS PART MARKED: 6STD25PAR99E20X CONEC ABC (b)

AT ALL TIMES WATER RESISTANT CONNECTORS NOT IN USE SHOULD BE COVERED WITH A CONEC WATER RESISTANT CAP OR WATER TIGHT HOOD.

(5:1)

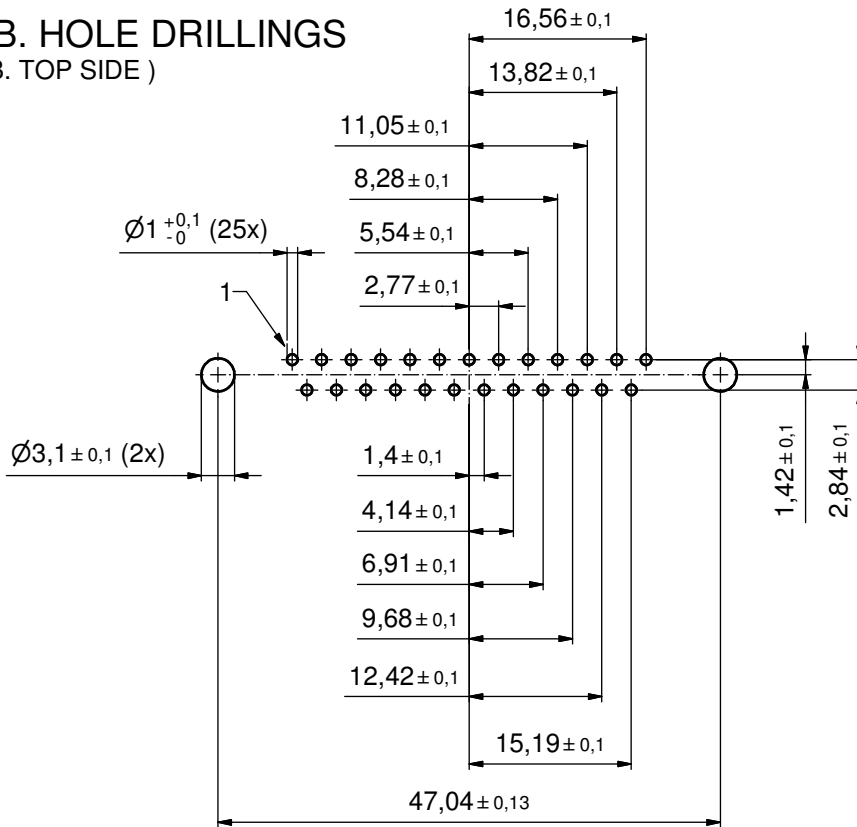


Directive 2002/95/EC RoHS compliant

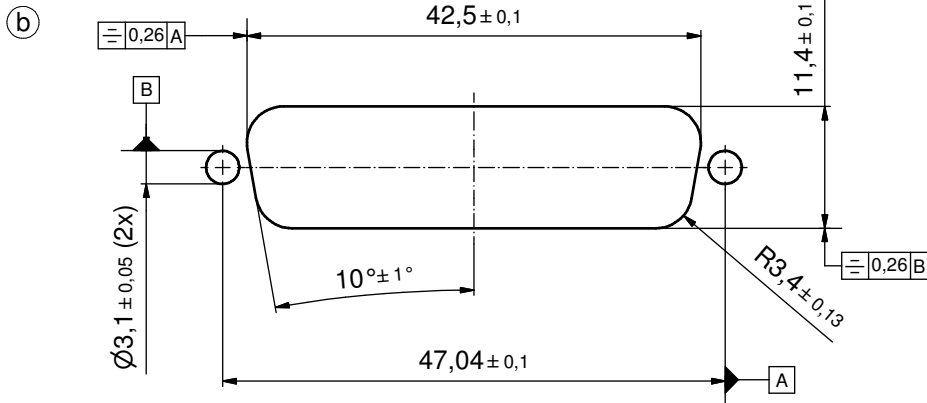
| | | | | | | | |
|--|-------------|--------------|------|------------------------------------|----------|---|--|
| THIS DRAWING MAY NOT BE COPIED OR REPRODUCED IN ANY WAY, AND MAY NOT BE PASSED ON TO A THIRD PARTY WITHOUT WRITTEN PERMISSION. OWNERSHIP AND COPYRIGHT OF CONEC GmbH | | | | tolerance | | scale: 2:1 (5:1) | |
| | | | | dim. in mm | | material: SEE NOTES | |
| DO NOT ALTER CAD DRAWING BY HAND | | | | date | name | title: D-SUB MALE 25pos. SOLDER PIN STRAIGHT with threaded spacer clip and hexlocking screw | |
| | | | | drawn | 04.02.04 | | |
| appd. | 04.02.04 | Mickenbecker | | | | | |
| norm | | | | DIN 41652 | | dwg no: 18K2A245 | |
| 5 x c | Ä3963 | 11.04.2011 | K.H. | d-old | DIN-A3 | | |
| 5 x b | Ä1983 | 31.03.2004 | Mkf. | part no: 6STD25PAR99E20X | | | |
| a | Original | | | | | sh: 5/8 | |
| rev. | description | date | name | CONEC | | | |

P.C.B. HOLE DRILLINGS (P.C.B. TOP SIDE)

(b)



RECOMMENDED PANEL CUT-OUT

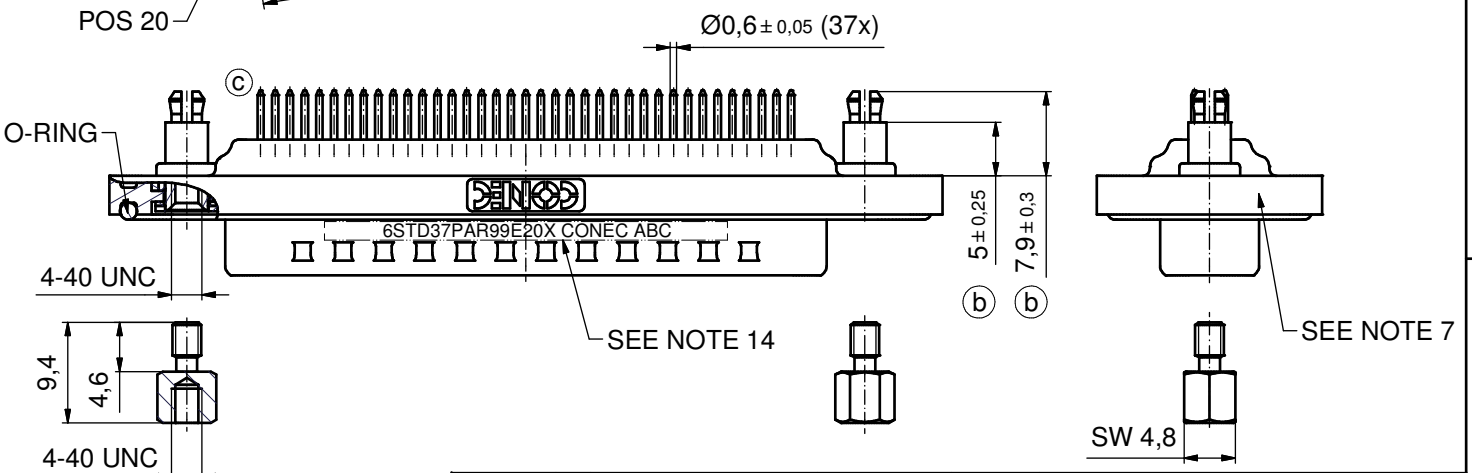
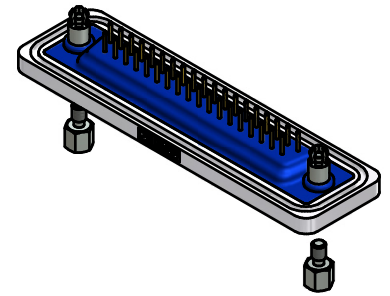
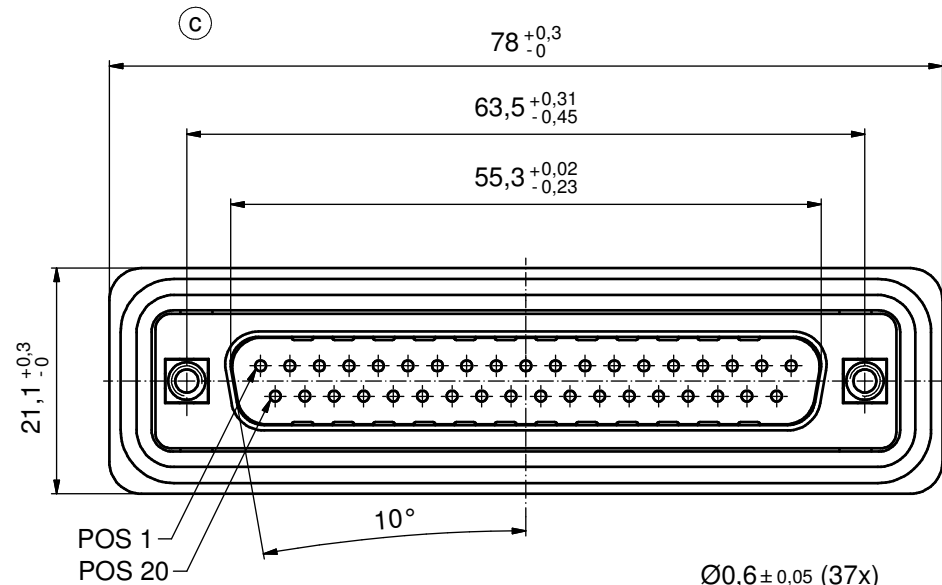
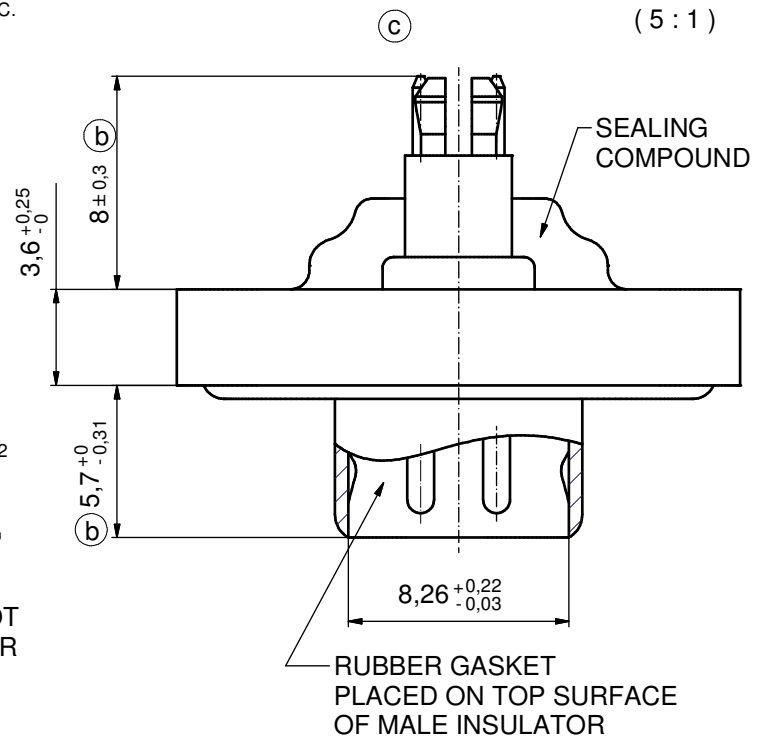


| | | | | | | |
|--|----------|------------|-------|--|----------|-----------------------|
| THIS DRAWING MAY NOT BE COPIED OR REPRODUCED IN ANY WAY, AND MAY NOT BE PASSED ON TO A THIRD PARTY WITHOUT WRITTEN PERMISSION. OWNERSHIP AND COPYRIGHT OF CONEC GmbH DO NOT ALTER CAD DRAWING BY HAND | | | | tolerance | | scale: 2:1 |
| | | | | date | name | material: SEE SHEET 5 |
| | | | | drawn | 04.02.04 | Lehmenkühler |
| | | | | appd. | 04.02.04 | Mickenbecker |
| | | | | norm | | |
| | | | d-old | | | |
| 3 x b | A3963 | 11.04.2011 | K.H. | title: P.C.B. HOLE DRILLINGS RECOMMENDED PANEL CUT-OUT D-SUB MALE 25pos. SOLDER PIN STRAIGHT | | |
| a | Original | | | | | |
| rev. description date name | | | | | | dwg no: 18K2A245 |
| | | | | | | part no: SEE SHEET 5 |
| | | | | | | DIN-A3 sh: 6/8 |

NOTES: (C)

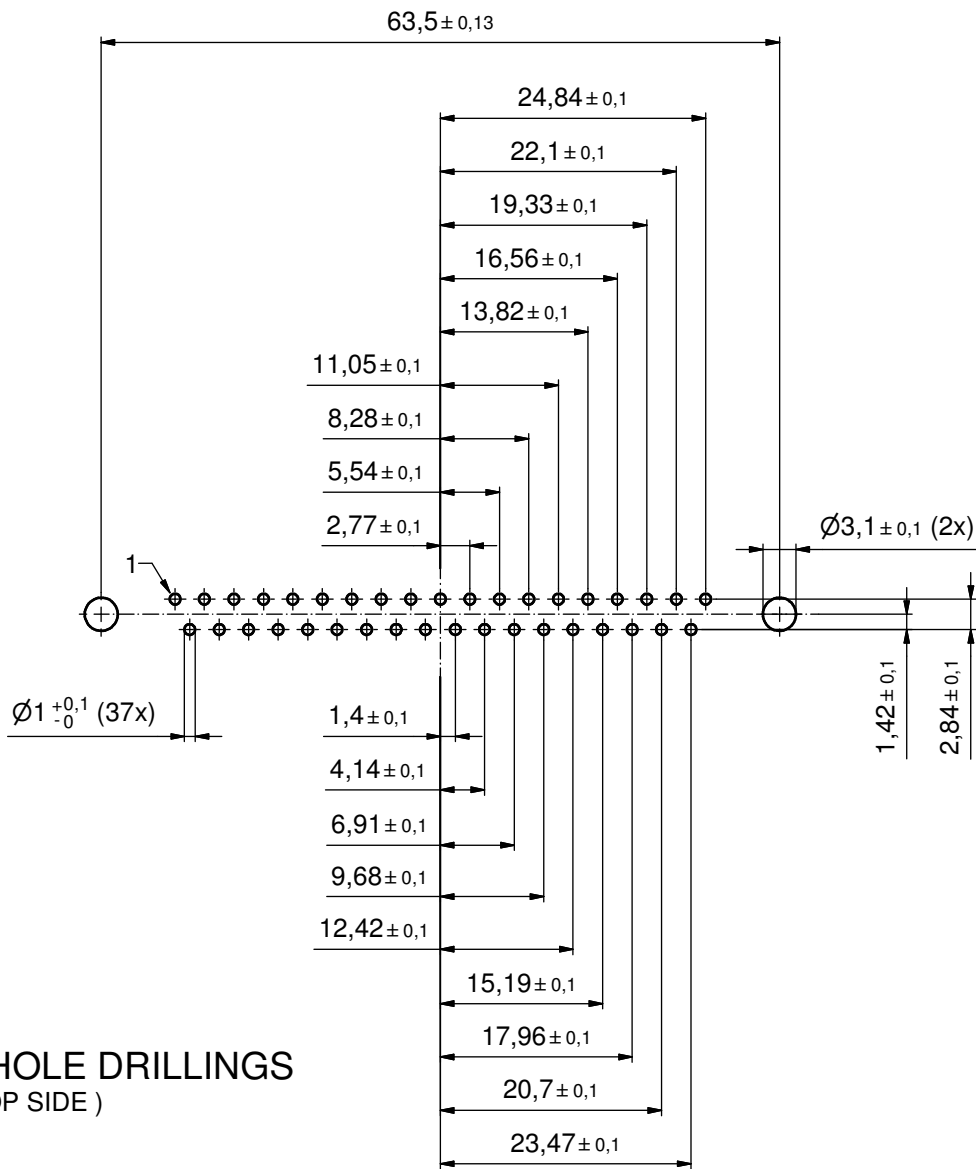
1. FOR WAVESOLDERING (SOLDER BATH TEMPERATURE 240°C FOR 5 SEC. AND SOLDER PREHEAT 120°C FOR 120 SEC.)
2. METALSHHELLS: COPPER ALLOY; min. 315µin TIN over 40-80µin NICKEL
3. INSULATORS: PBT GF UL 94 V-0; BLACK
4. CONTACTS: COPPER ALLOY
PLATING: GOLD FLASH over NICKEL
5. THREADED SPACER CLIPS: COPPER ALLOY;
min. 200µin TIN over 80µin NICKEL
PCB-HOLE: $\varnothing 3,1 \pm 0,1$; PCB THICKNESS 1,6mm
6. COLLARS: COPPER ALLOY; min. 200µin TIN over 80µin NICKEL
7. FRAME: ZINC DIE CAST; NICKEL PLATED
8. O-RING: SILICON; BLUE
9. RUBBER GASKET: TPE; BLACK
10. SEALING COMPOUND: PUR; BLUE
11. HEXLOCKING SCREWS: STAINLESS STEEL
12. P.C.B. HOLE DRILLINGS + RECOMMENDED PANEL CUT-OUT ON SHEET 2
13. RECOMMENDED TORQUE FOR MOUNTING SCREW 35Ncm (3.1 in.LB) / max. 40Ncm (3.5 in.LB)
14. CONNECTOR IS PART MARKED: 6STD37PAR99E20X CONEC ABC (b)

AT ALL TIMES WATER RESISTANT CONNECTORS NOT IN USE SHOULD BE COVERED WITH A CONEC WATER RESISTANT CAP OR WATER TIGHT HOOD.



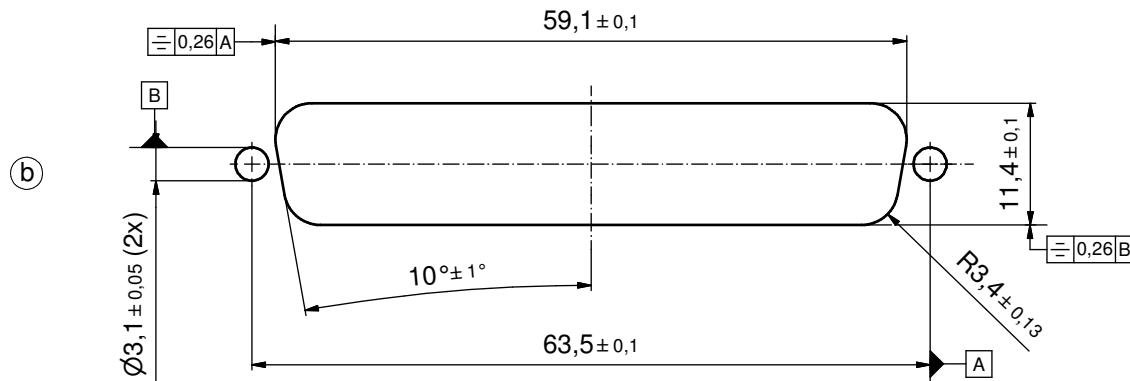
Directive 2002/95/EC RoHS compliant

| | | | | | | |
|---|-------------|------------|------|----------------|--------------------------|--|
| THIS DRAWING MAY NOT BE COPIED OR REPRODUCED IN ANY WAY, AND MAY NOT BE PASSED ON TO A THIRD PARTY WITHOUT WRITTEN PERMISSION. OWNERSHIP AND COPYRIGHT OF CONEC GmbH DO NOT ALTER CAD DRAWING BY HAND | | | | tolerance | | scale: 2:1 (5:1) |
| | | | | dim. in mm | | material: SEE NOTES |
| | | | | date | name | title: D-SUB MALE |
| | | | | drawn 04.02.04 | Lehmenkühler | 37pos. SOLDER PIN STRAIGHT |
| | | | | appd. 04.02.04 | Mickenbecker | with threaded spacer clip and hexlocking screw |
| 5 x c | Ä3963 | 11.04.2011 | K.H. | d-old | dwg no: | DIN-A3 |
| 5 x b | Ä1983 | 31.03.2004 | Mkf. | | 18K2A245 | (C) sh: 7/8 |
| a | Original | | | | part no: 6STD37PAR99E20X | |
| rev. | description | date | name | CONEC | | |



P.C.B. HOLE DRILLINGS
(P.C.B. TOP SIDE)

RECOMMENDED PANEL CUT-OUT



Directive 2002/95/EC RoHS compliant

| | | | | | | | | | |
|--|-------------|------|-------|-----------|----------|---------------------|--|--------|--|
| THIS DRAWING MAY NOT BE COPIED OR REPRODUCED IN ANY WAY, AND MAY NOT BE PASSED ON TO A THIRD PARTY WITHOUT WRITTEN PERMISSION. OWNERSHIP AND COPYRIGHT OF CONEC GmbH DO NOT ALTER CAD DRAWING BY HAND | | | | tolerance | | dim. in mm | scale: 2:1 | | |
| | | | | | | | material: SEE SHEET 7 | | |
| | | | | date | name | | title: P.C.B. HOLE DRILLINGS RECOMMENDED PANEL CUT-OUT D-SUB MALE 37pos. SOLDER PIN STRAIGHT | | |
| | | | | drawn | 04.02.04 | Lehmenkühler | | | |
| | | | | appd. | 04.02.04 | Mickenbecker | | | |
| | | | norm | | | dwg no: 18K2A245 | | | |
| | | | d-old | | | | | DIN-A3 | |
| 3 x b A3963 11.04.2011 K.H. | | | | | | | sh: 8/8 | | |
| rev. | description | date | name | | | | part no: SEE SHEET 7 | | |