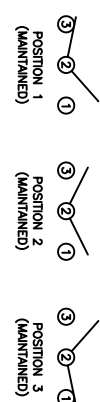
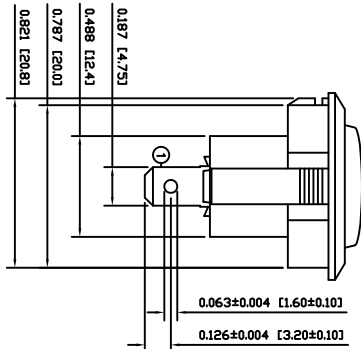
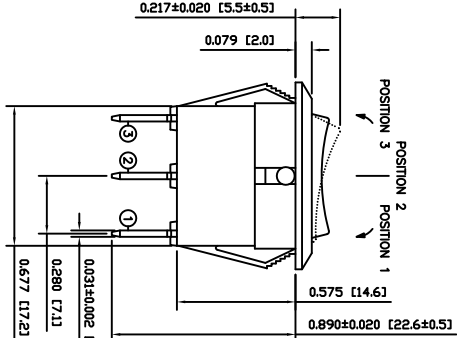
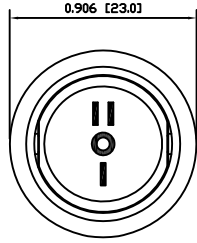


SHEMATIC



SPECIFICATIONS

FUNCTION: 1P2T ON-OFF-ON  
 RATINGS: ANSI/UL 1054 and CAN/CSA C22.2 No. 55 (E194579): 16A 125VAC [UR, CLR] 10A 250VAC [UR, CLR] 1/3HP 125/250VAC [UR, CLR]  
 EN 61058-1:2002: 1E4 1125/55 [ENEC14, SEMKO] 10(4)A 250V~ μ 5E4 185/55 [ENEC14, SEMKO] 10(2)A 250V~ μ 5E4 185/55 [ENEC14, SEMKO]  
 CONTACT RESISTANCE: Initial: 50mΩ Max. at 50VAC  
 INSULATION RESISTANCE: 100MΩ Min. at 500VDC  
 DIELECTRIC STRENGTH: 1,500VAC for 1 minute  
 ELECTRICAL LIFE: 6,000 Cycles [UR, CLR] 10,000 Cycles [ENEC14, SEMKO: 10(4)A 250V~] 50,000 Cycles [ENEC14, SEMKO: 10(2)A 250V~]  
 TEMPERATURE: Operating: -20°C to 105°C [UR, CLR] Operating: -20°C to 125°C [ENEC14, SEMKO] Operating: -20°C to 85°C [ENEC14, SEMKO: 10(2)A 250V~]  
 APPROVALS: **RoHS** COMPLIANT



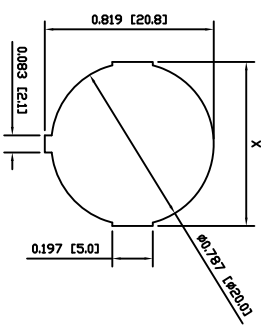
COLORS AND MARKINGS

BODY: Black  
 ACTUATOR: Black  
 MARKINGS: 1/0/II Vertical (S)  
 MARKING COLOR: White

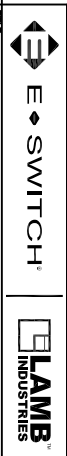
MATERIALS

BODY: Polyamide 6/6 (PA66), UL94 V-2  
 ACTUATOR: Polyamide 6/6 (PA66), UL94 V-2  
 SPRING: Steel  
 SPRING COVER: Steel  
 CONTACTS: Silver Alloy Plated Copper  
 TERMINALS: Silver Plated Copper

SUGGESTED PANEL CUTOUT



PANEL THICKNESS	X
0.030~0.049 [0.75~1.25]	0.795 [20.2]
0.049~0.078 [1.25~2.00]	0.803 [20.4]
0.079~0.118 [2.00~3.00]	0.811 [20.6]



RR115C112S

ACTUATOR	A	09/08/10	CAB
BODY	B	10/03/13	CAB
COLORS	B	10/04/10	CAB
MATERIALS	A	09/08/10	CAB
SPECIFICATIONS	A	09/08/10	CAB
REFERENCE	REV.	BY	

THE INFORMATION CONTAINED IN THIS DOCUMENT IS PROPRIETARY TO E-SWITCH-LAMB INDUSTRIES AND IS NOT TO BE COPIED OR TRANSMITTED

INITIAL RELEASE DESCRIPTION	A	REV.
21077 3/21/13		
FOR DATE DRAWN BY		

DIMENSIONS INCHES [MILLIMETERS]  
 GENERAL TOLERANCES ±0.008 [±0.2] / ±1'  
 SCALE DRAWING NOT TO SCALE  
 PROJECTION THIRD ANGLE

DATE	REVISION
MARCH 21, 2013	A