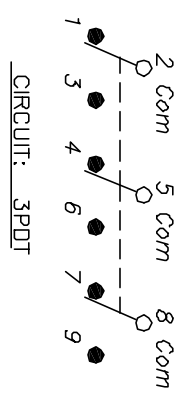


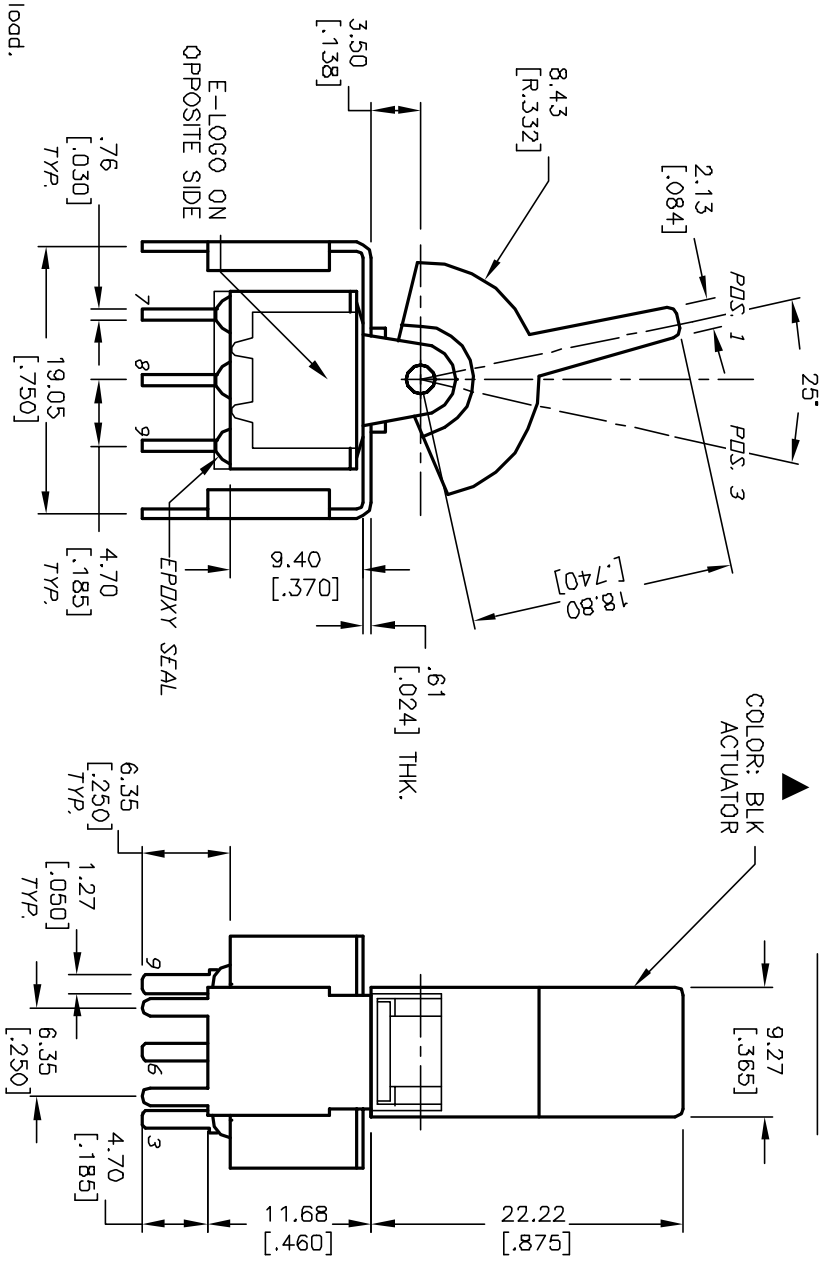
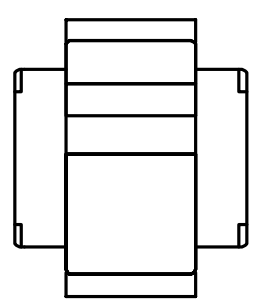
RECOMMENDED PANEL MOUNTING



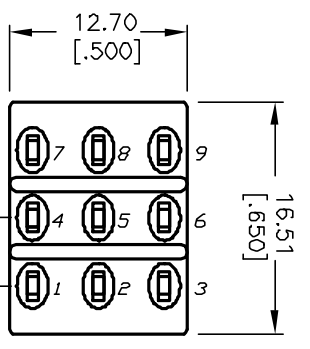
SWITCH FUNCTION		
PDS. 1	PDS. 2	PDS. 3
DN	N/DNE	(DN)
2-3,5-6,8-9	DPEV	2-1,5-4,8-7

( ) = MOMENTARY

- NOTES:
1. ALL DIMENSIONS IN MM [INCH]
  2. GENERAL TOLERANCE: X.X=±0.4; X.XX=±0.25
  3. TERM. NOS. FOR REF. ONLY
  4. CONTACT RATING: 5A @120VAC or 28VDC; 2A @250VAC
  5. FIXED TERM/MOVING CONTACT: COPPER ALLOY W/SILVER PLATE.
  6. ELECTRICAL LIFE: 50,000 make-and-break cycles at full load.
  7. INSULATION RESISTANCE: 1,000M ohm min.
  8. DIELECTRIC STRENGTH: 1,000 V RMS @sec level
  9. OPERATION TEMP.: -30°C to +85°C
  10. ▲ DENOTES CRITICAL PARAMETER.



BOTTOM VIEW



REV.	ECN No.	DESCRIPTION	DATE	CHKD	SCALE	DATE	DR	DWG	REV
A	12954	RELEASED FOR PRODUCTION	3/25/03	AR	2:1	3/25/03	AR	T333005	A
TITLE					3003P2J2BLKM2QE				
THE INFORMATION CONTAINED IN THIS DOCUMENT IS PROPRIETARY TO E-SWITCH AND IS NOT TO BE COPIED OR TRANSFERRED					E-SWITCH®				