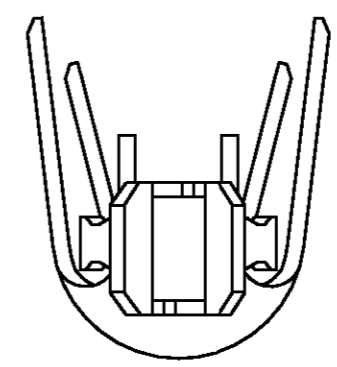
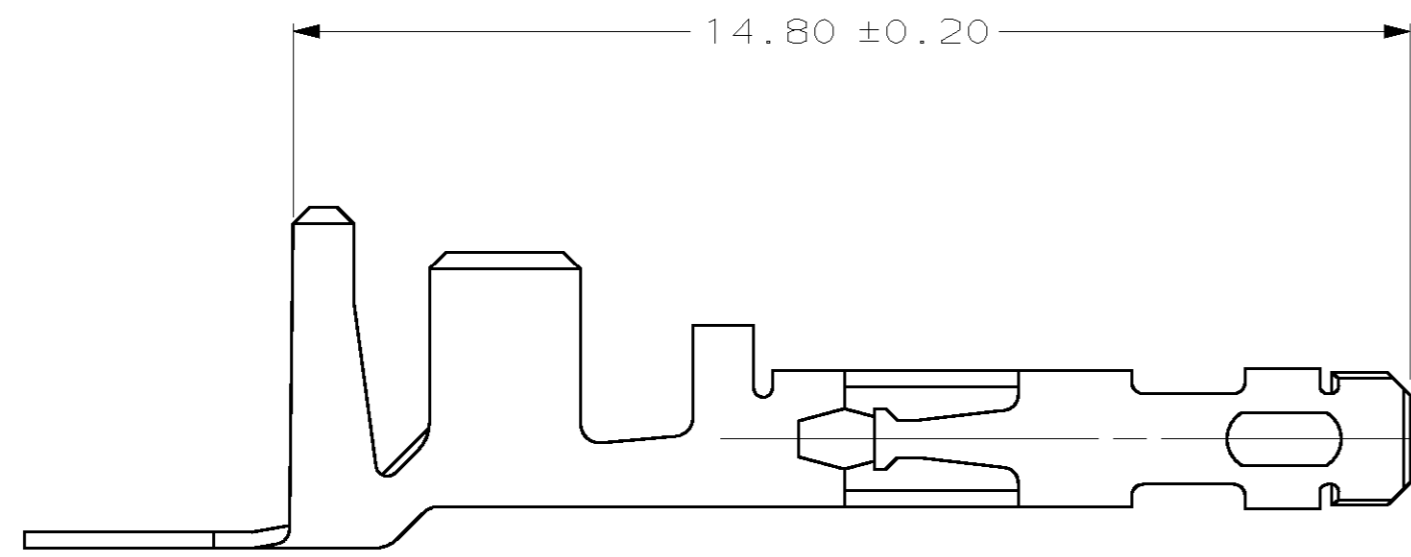
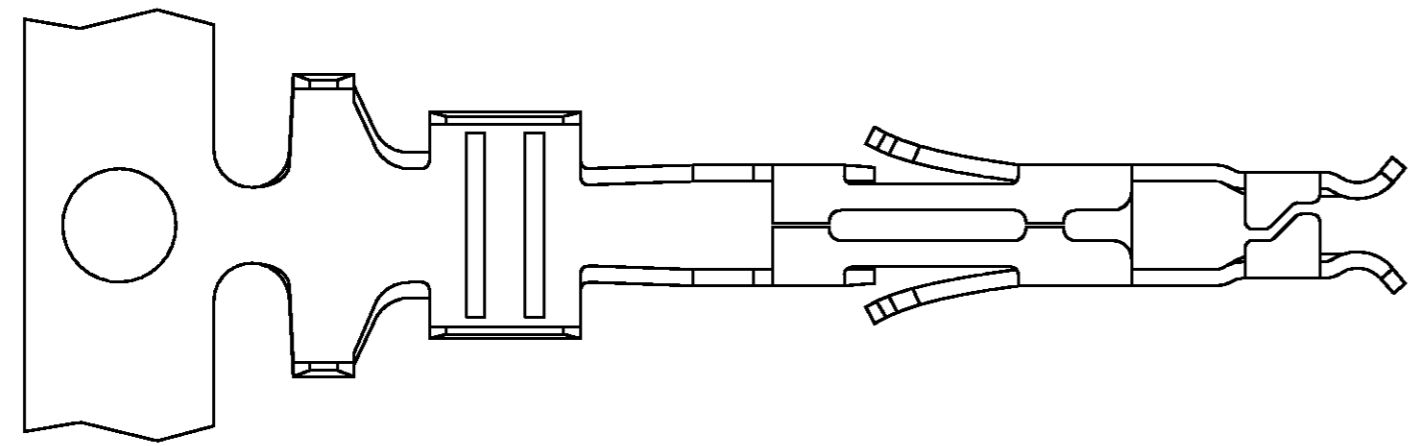


THIS DRAWING IS UNPUBLISHED. RELEASED FOR PUBLICATION .19
 © COPYRIGHT 19 BY AMP INCORPORATED. ALL RIGHTS RESERVED.

LOC	DIST	REVISIONS			
P	LTR	DESCRIPTION	DATE	DWN	APVD
CM	53				
		C	REVISED PER EC 063B-0290-00	12-JUN-00	KW SR

- 1. APPLICATOR TOOL: 680350-3.
- 2. CONTACT EXTRACTION TOOL: 188688-1.
- 3. WIRE RANGE: (2)0.8-0.9mm² (2X18 AWG) OR (1)1.2mm² (1X16 AWG).
- 4. INSULATION RANGE: 3.3 DIA MAX. FOR 2X18 AWG AND 3.0 DIA MAX FOR 1X16 AWG.



794421-1	PRE-TIN	0.22 PH BRZ	794418-1
LOOSE PIECE (REF)	FINISH	MATERIAL	PART NO

THIS DRAWING IS A CONTROLLED DOCUMENT.		DWN R. VESTAL 9-02-97	AMP Incorporated Harrisburg, PA 17105-3608	
DIMENSIONS: mm		CHK R. SWING 9-02-97	CONTACT, SOCKET, AMP-DUAC™ POWER CONNECTOR	
TOLERANCES UNLESS OTHERWISE SPECIFIED: 0 PLC ±- 1 PLC ±- 2 PLC ±0.10 3 PLC ±- 4 PLC ±- ANGLES ±0°30'		APVD C. CASH 9-02-97	NAME	
MATERIAL SEE TABLE		PRODUCT SPEC 108-1646 APPLICATION SPEC 114-6067 1	SIZE A2	CAGE CODE 00779
FINISH SEE TABLE		WEIGHT -	DRAWING NO C-794418	RESTRICTED TO -
CUSTOMER DRAWING			SCALE 10:1	SHEET 1 OF 1



794418