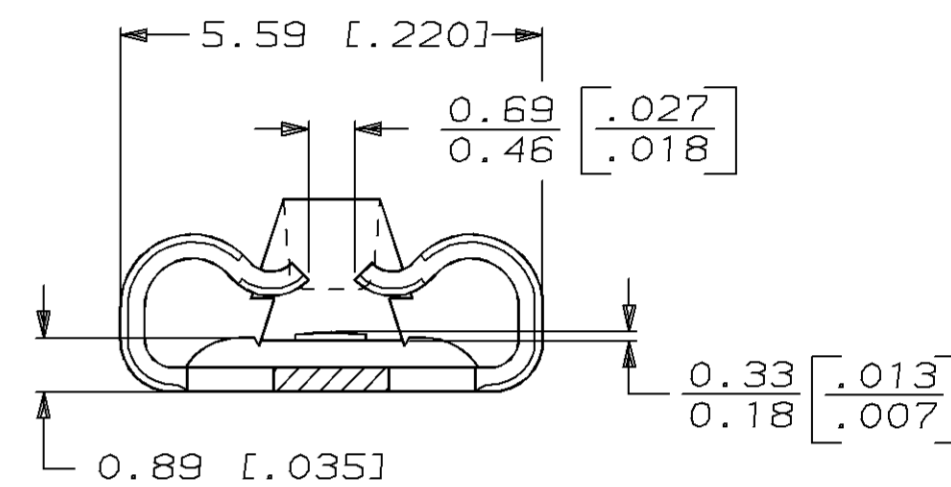
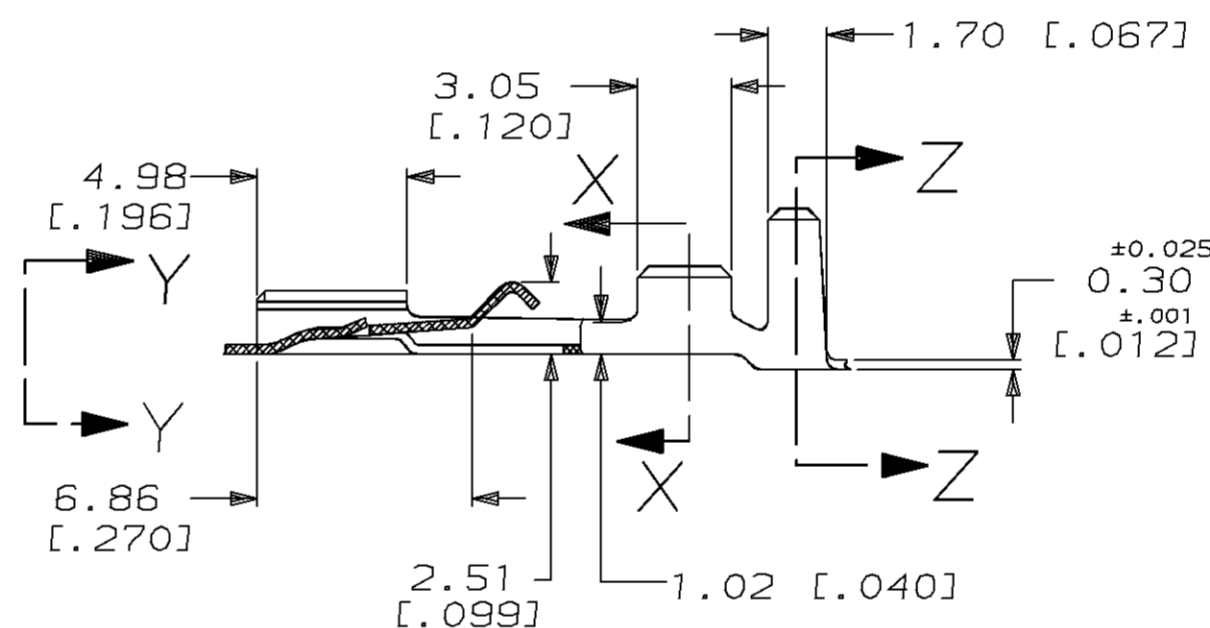
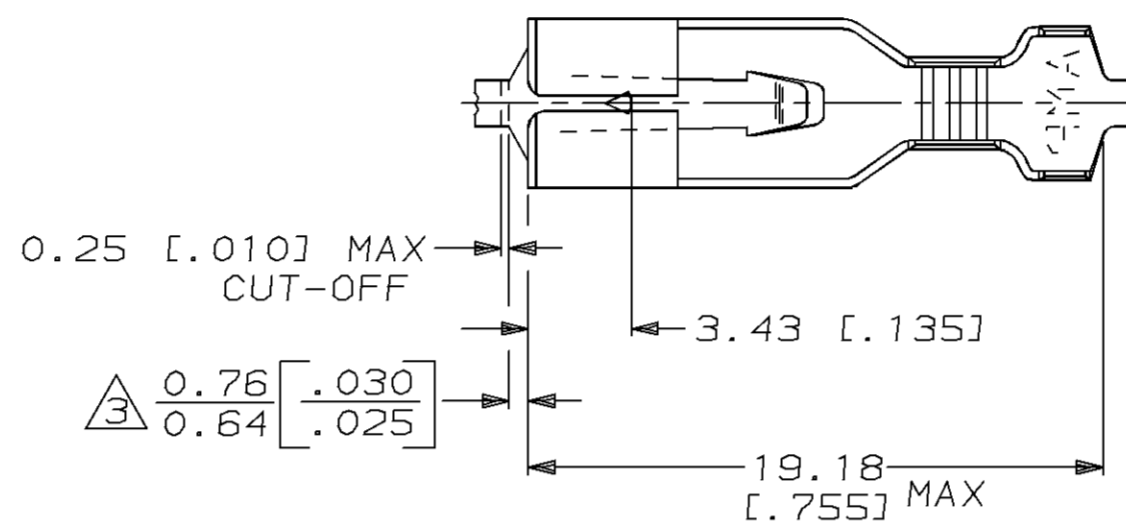
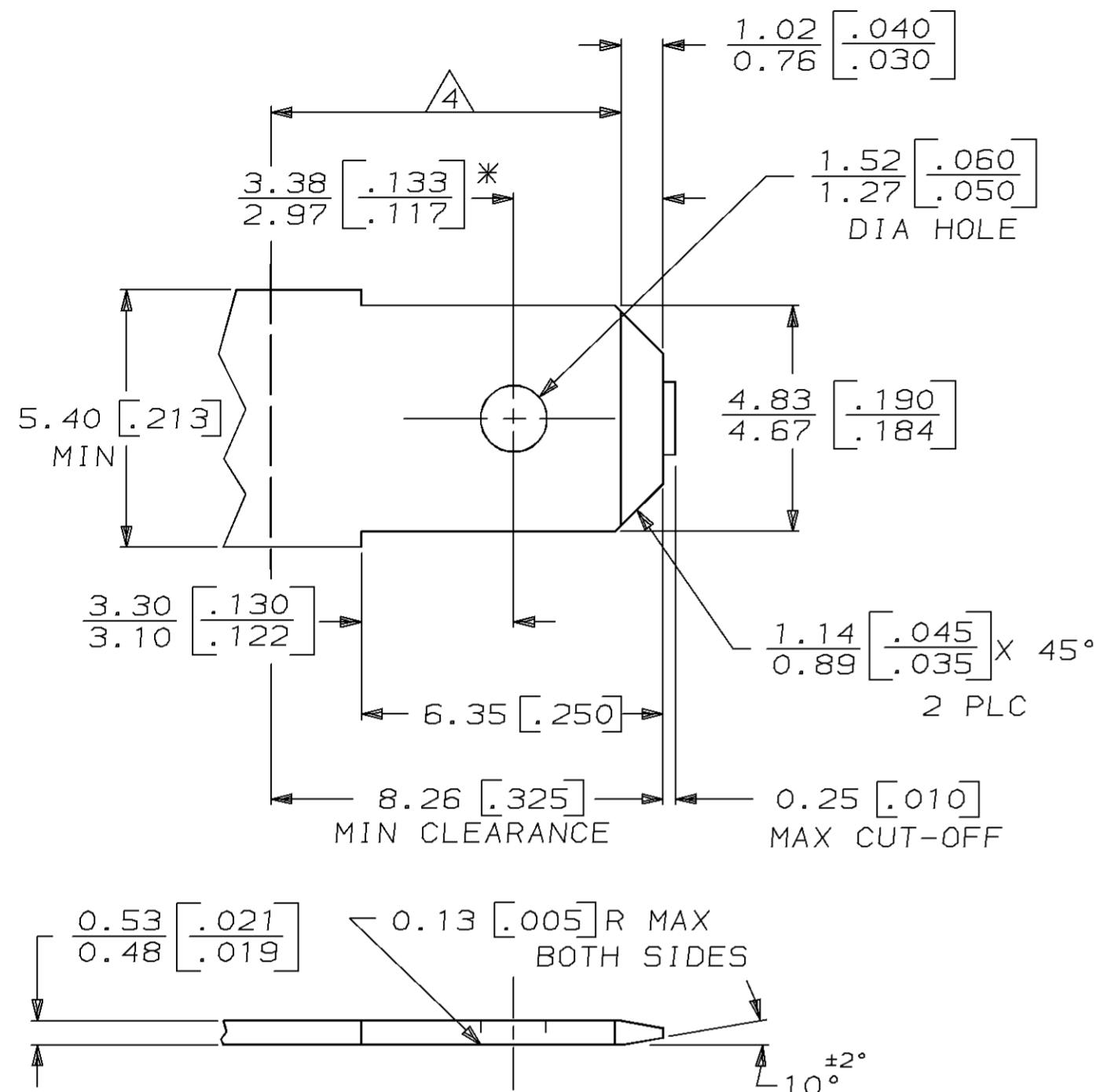
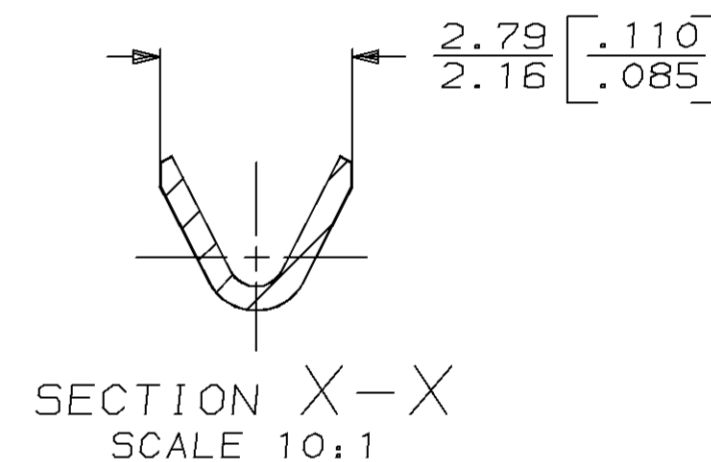


LOC		DIST		REVISIONS			
P	F	ZONE	LTR	DESCRIPTION	DATE	APPD	
AF	50		M	OBS -1 PER 0L10-0056-96	8/26/96	JR/JG	

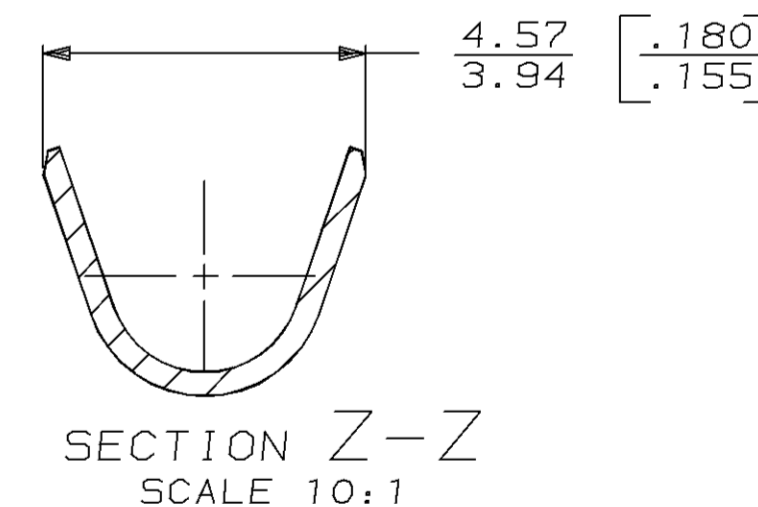
SUGGESTED MATING TAB



VIEW Y-Y
SCALE 10:1



SECTION X-X
SCALE 10:1



SECTION Z-Z
SCALE 10:1

- 1 MATL: #2 HARD BRASS OR NICKEL PLATE STEEL.
 - 2 NO BURRS PERMISSIBLE AT HOLE.
 - 3 TIN PLATING IS REQUIRED ON BRASS WHEN TERMINAL TEMPERATURE IS OVER 225°F.
 - 4 MUST BE FLAT WITHIN 0.076 [.003] OVER THIS LENGTH.
 - 5 HOLE MUST BE SYMMETRICAL ABOUT TAB ϕ WITHIN 0.076 [.003].
- * TO BE USED ONLY WHEN SHOULDER IS ELIMINATED.

OBSOLETE	PRE-TIN	1.52-2.79 [.060-.110] DIA	0.2-0.5mm ² [24-20] AWG	63407-2
	TIN 0.002032 [.000080] MIN			63407-1
	FINISH	INSULATION RANGE	WIRE SIZE	PART NO
	DO NOT SCALE PRINT. UNLESS SPECIFIED DIMENSIONS IN mm [INCHES] TOLERANCES ON : 2 PLC DEC ± 0.25 [.010] 3 PLC DEC ± - ANGLES ± -	DR 1/24/91 JR RUTH CHK 1/24/91 MS FEHER APPD 1/24/91 J GILLESPIE	AMP Incorporated Harrisburg, PA 17105-3608 NAME RECEPTACLE, POSITIVE-LOCK, 4.75 [.187] SERIES	
	MATERIAL #6H BRASS	APPD 1/24/91 D REINER PRODUCT SPEC -		
	FINISH SEE TABLE	APPLICATION SPEC -	SIZE C	CAGE CODE 00779
		WEIGHT -	DRAWING NO 63407	SHEET 1 OF 1

METRIC