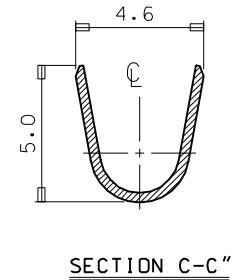
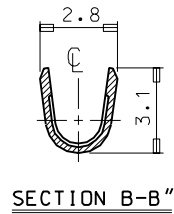
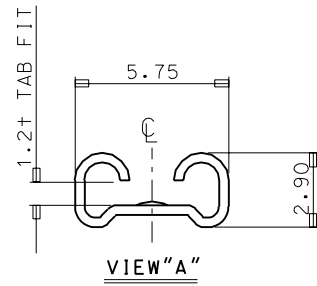
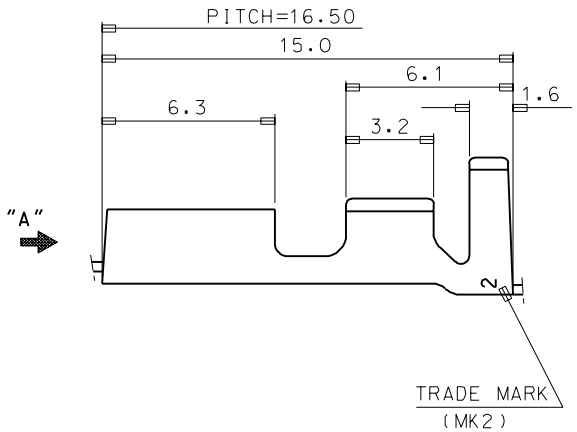
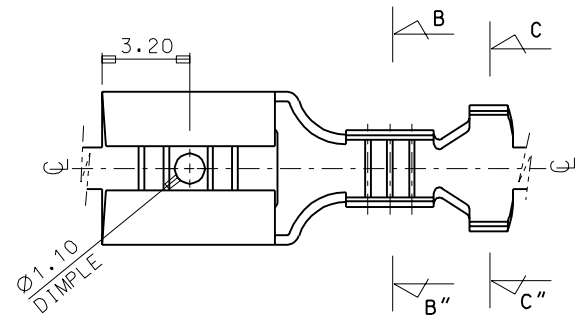


PROJECT NO. EDP NO. SIMILAR ITEM ENG. NO. SD 35718-11*0



- NOTES
1. MATERIAL: BRASS , 0.35THICKNESS
 2. FINISH: 35718-1100:UNPLATED
35718-1110:POST-TIN PLATED

WIRE RANGE AWG #20-#16 (0.52-1.31mm ²)					MATERIAL SEE NOTES	MOLEX-KOREA CO.,LTD.	
INSULATION RANGE Ø2.6-3.5	B	REVISED	95-007	95.1.17	GENERAL TOLERANCE DIMENSION : 1p1cs:±0.30 ANGLE → 2p1cs:±0.20		DRAWN BY W. Y. YANG
DIE FEED: //	A	CAD REDRAWING	93-011	93.5.24	DIMENSION CLASSIFICATION ▽ : CRITICAL ▼ : MAJOR () : REFERENCE	APP'D BY	SCALE 6:1
APPLICATOR FEED: 16.5	LTR	REVISION RECORD	ECN	DATE	ASS'Y PART DESCRIPTION ENG. NO.	TITLE: .187 SLIP-ON REC'	SHEET 1 of 1
O'TY/ REEL OR PACK 7,000 O'ty/Reel	REVISE ONLY ON CAD SYSTEM				//	ENG. NO. SD 35718-11*0	REV B