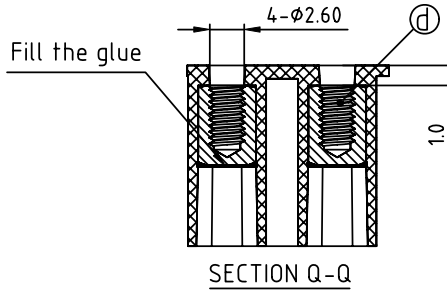
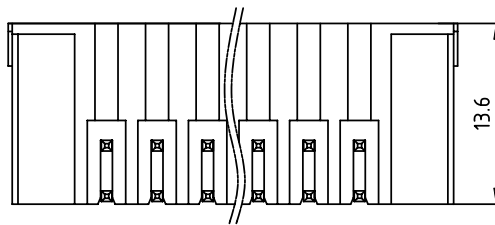
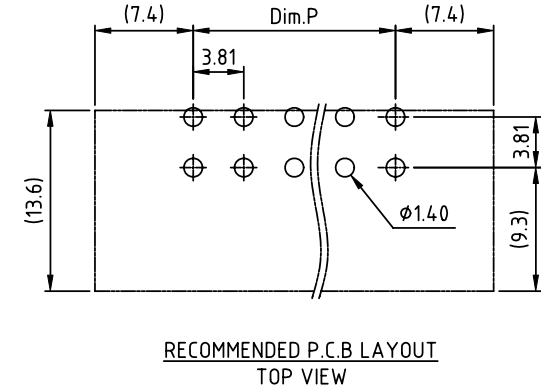
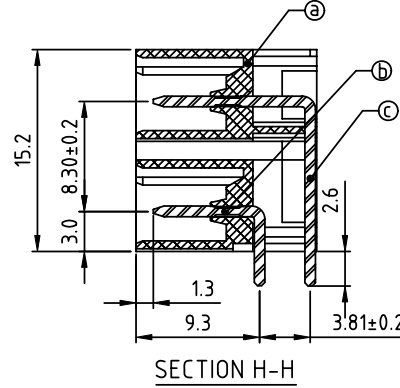
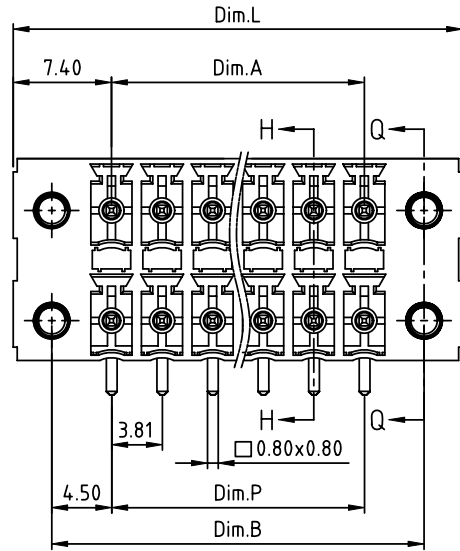


PRODUCT NUMBER	PITCH
KExx32x1A0J0G	3.81 mm



Material:

- Item a Terminal housing: Thermoplastic(UL94V-0)
- Item b Short pin: Copper Tin plated
- Item c Long pin: Copper Tin plated
- Item d With flange nut: Brass M2.5

Electrical:

- Voltage rating: 300V
- Current rating: 5.5A
- Withstanding Voltage: 1.6 KV
- Operating temperature: -40°C to +115°C
- Soldering temperature: 260°C ±5°C/5 Sec
- Safety Approval: cULus

DIMENSION

Dim.L	(N/2-1) × 3.81+14.8			
Dim.P	(N/2-1) × 3.81			
Dim.A	(N/2-1) × 3.81			
Dim.B	(N/2-1) × 3.81+9.0			

N=Number of poles

poles	Dim.L	Dim.P	Dim.A	Dim.B
2x2P-2x5P	±0.20	±0.15	±0.15	±0.15
2x6P-2x16P	±0.30	±0.25	±0.25	±0.25
2x17P-2x24P	±0.40	±0.30	±0.30	±0.30

PART NO.: KE xx 3 2 x 1 A0J0 G

Solid block	0	Black (RAL9005)	RoHS compliant (lead<4%) In copper Alloy
No. of poles	2	Red (RAL3001/D)	
04 2x2poles	3	Orange(RAL2011/P)	
06 2x3poles	4	Yellow(RAL1018/A)	
...	5	Green(RAL6018/T)	
48 2x24poles	6	Blue (RAL5015/A)	
	8	Grey(RAL7035/D)	
	9	White(RAL1102)	
	C	Green(RAL6018/U)	

mat'l. code		surface ASME Y14.5	tolerance ASME Y14.5	projection	product family TERMINAL BLOCK
ltr	ecn no	dr	date	 MM	title TERMINAL BLOCK PLUGGABLE SOCKET,RIGHT ANGLE,WITH FLANGE
tolerances unless otherwise specified					
angles		φ	X.±0.5		dwg no KExx32x1A0J0G sheet 1 of 1 size A4
±1°		±	X.X±0.3		
		±	X.XX±0.1		
dr	EVIN ZHONG	042414			
enr	EVIN ZHONG	042414		type CUSTOMER Drawing	
chr	HANKE FENG	042414			
appd	SHI JUN	042414			
sheet index	revision sheet	A	1		