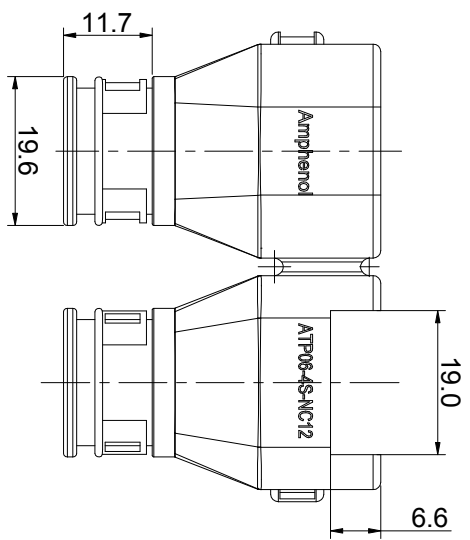
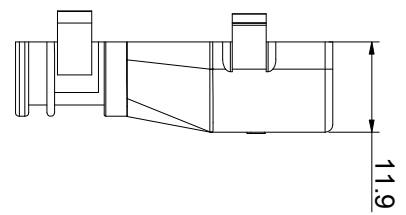
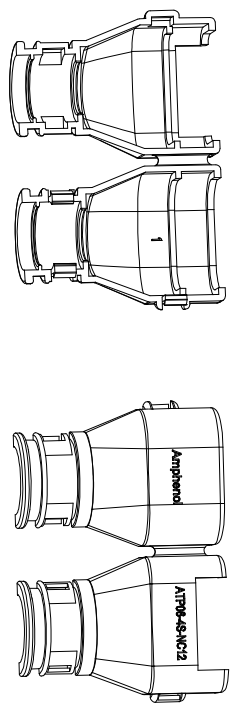
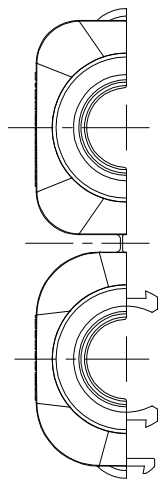
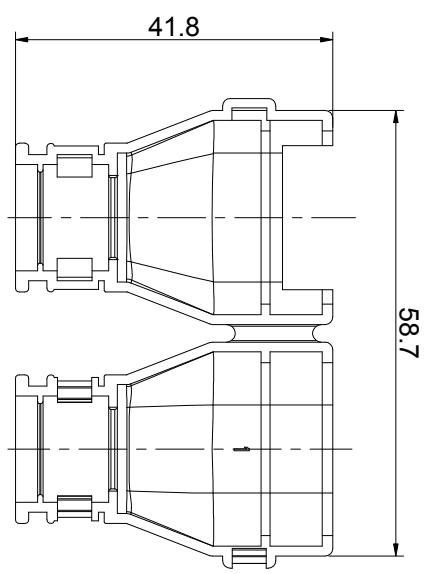
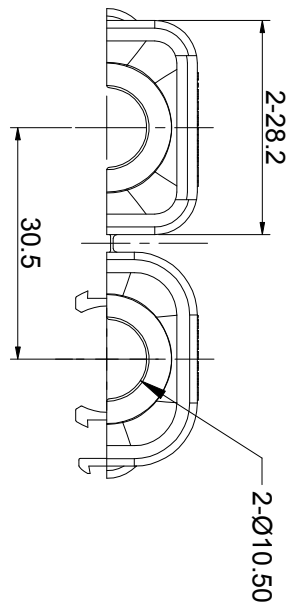


REVISIONS				
REV	ECO	DESCRIPTION	DATE	BY
A1		RELEASE NEW DWG FORMAT	Jan-16-15	TOM



PART NUMBER		ATP06-4S-NC12	
QUANTITY			
UNLESS OTHERWISE SPECIFIED 1) All dimensions are in metric(mm). 2) Tolerances are as follows: 1 PL DEC #0.30 Fractions ±1/64 2 PL DEC #0.15 Angles ±1° 3 PL DEC #0.08 3) Note reference =			
SIGNATURES		DATE	
DRAWN: TOM		Jan-16-15	
CHECKED:			
ENGINEER:			
APPROVAL:			
CUSTOMER:			
THIS DRAWING IS SUPPLIED FOR INFORMATION ONLY. DESIGN FEATURES, SPECIFICATIONS AND PERFORMANCE DATA SHOWN HEREON ARE THE PROPERTY OF AMPHENOL CORPORATION. NO RIGHTS OF REPRODUCTION ARE IMPLIED. ALL DIMENSIONS ARE SUBJECT TO NORMAL MANUFACTURING VARIATIONS.			
MATERIAL SPECIFICATIONS:		Site Systems - www.amphenol-site.com 44724 Morley Drive Clinton Township, MI 48036	
PROCESS SPECIFICATIONS:		folding shells with snap latches 4 POSITION, ATP SERIES	
NEXT ASSY:		SIZE: A TYPE: C- DWG NO: ATP06-4S-NC12 REVISION: A1 SCALE: NONE SHEET 1 OF 1	

MATERIALS LIST

DESCRIPTION

ITEM

Amphenol

- NOTES: UNLESS OTHERWISE SPECIFIED
1. MATERIAL: THERMOPLASTIC; COLOR: BLACK
 2. ROHS COMPLIANT
 3. ALL DIMENSIONS ARE FOR REFERENCE USE ONLY.
 4. MATING CYCLE DURABILITY: 100 CYCLES